

367cd Baggy Sleeve Cardigan



Suggested yarn:

- Pierrot Yarns Loiseau Bleu [100% merino wool; 79 yds/72m per 1.41 oz./40g skein];
 - color #01 Milky, 16 skeins [605g]

Tools/Notions:

- 4.2mm (approx. US 6) and 4.8mm (approx. US 8) knitting needles or sizes necessary to achieve gauge
- 4 buttons (25mm/0.98")

Finished measurements:

- bust 110.5cm/43.50"
- center back neck-to-cuff 76cm/29.92"
- back length 50cm/19.69"

Gauge (10cm/4" square):

- pattern stitch: 19 sts and 30 rows
- k1p1 ribbing: 20.5 sts and 30 rows

Gauge may vary according to individual knitting style. Change needle size if necessary to achieve gauge. Alternatively, rework pattern with your own gauge measurements.

Summary

Body: Cast on with long-tail cast-on method. Work in k1p1 ribbing, then continue in pattern stitch.

Sleeve: Cast on with long-tail cast-on method. Work in pattern stitch. Bind off. Pick up stitches around cuff and work k1p1 ribbing. Bind off in pattern.

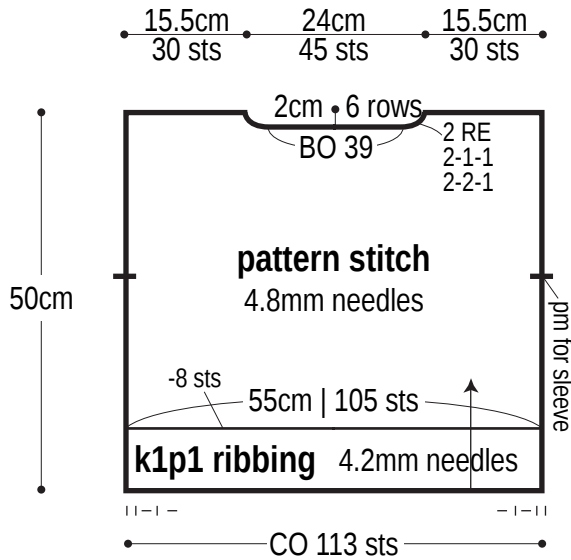
Buttonband & collar: Cast on with long-tail cast-on method. Work in k1p1 ribbing. Bind off.

Finishing: Seam shoulders with crochet slip stitch seam. Seam sleeves to body with crochet slip stitch seam. Seam sides and sleeves with one continuous mattress stitch seam per side of body/sleeve. Seam buttonband and collar piece to body of garment using mattress stitch and stitches-to-rows mattress stitch as needed.

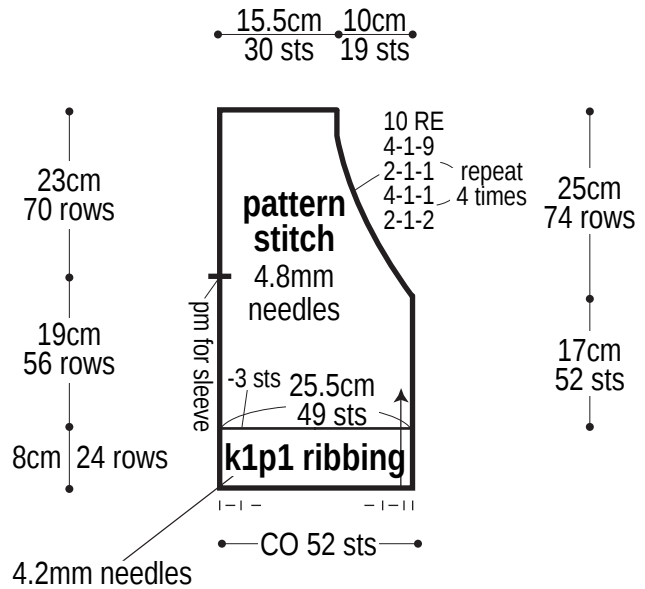
Abbreviations:

BO = bind off
CO = cast on
k = knit
p = purl
pm = place marker
PU = pick up
RE = row(s) even
#-#-# = rows-stitches-times

Back

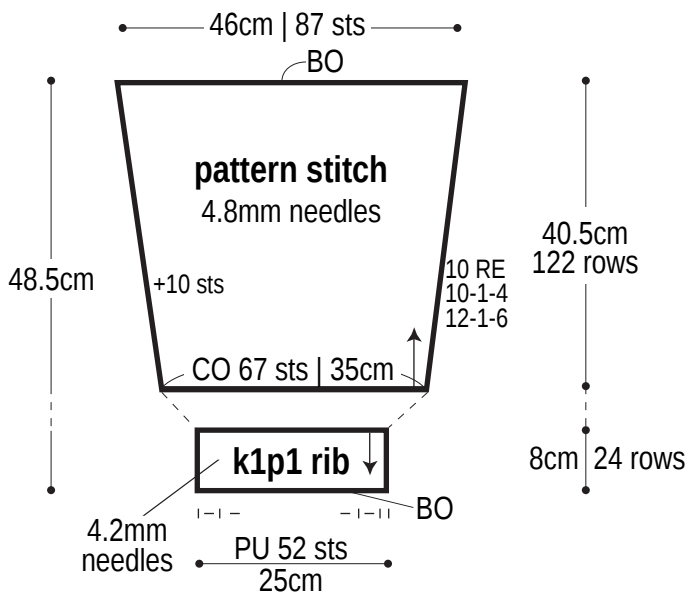


Right front



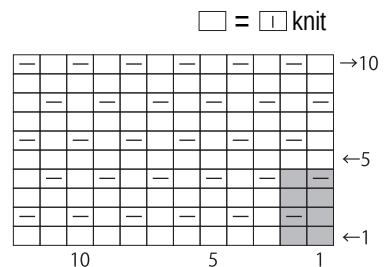
※Work left front as mirror image of right front.

Sleeve



Pattern stitch

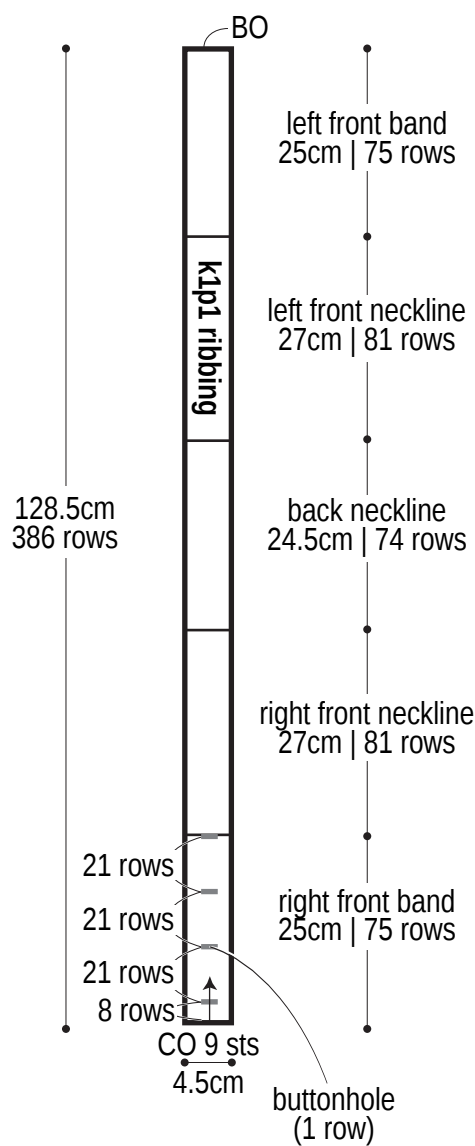
4.8mm needles



■ = 2-st, 4-row repeat

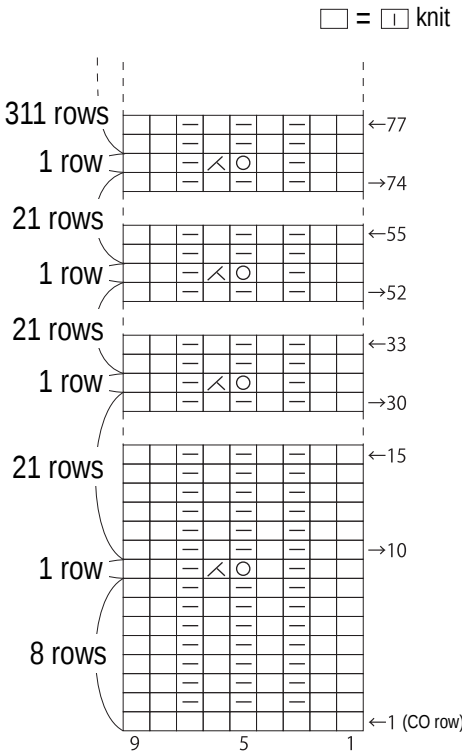
Buttonband & collar

4.2mm needles



Buttonholes (right front)

k1p1 ribbing 4.2mm needles



Finishing

