

218ss-08 La Puree Frilly Vest (Ladies)



Suggested yarn:

- Pierrot Yarns La Puree [100% cotton; 197 yds/180m per 1.76 oz./50g cone];
 - color #21P Ivory, 2 cones [55g]
 - color #100TU Snow White, 4 cones [180g]
 - color #102 Greige Blue, 2 cones [55g]
 - color #157 Spring Green, 4 cones [180g]

Tools/Notions:

- 2.3mm (approx. US B), 2.5mm (approx. US B or C), and 3.5mm (US E) crochet hooks or sizes necessary to achieve gauge

Finished measurements:

- bust 90cm/35.43"
- cross back width 37cm/14.57"
- back length 58cm/22.83"

Gauge (10cm/4" square):

- pattern stitch (with 2.5mm hook): 29 sts and 13.5 rows
- pattern stitch (with 2.3mm hook): 30 sts and 14 rows

Gauge may vary according to individual crochet style. Change hook size if necessary to achieve gauge. Alternatively, rework pattern with your own gauge measurements.

Summary

※**Note 1:** Like all Japanese patterns, stitch counts given here for foundation chains do not include any chain sts needed for turning posts.

※**Note 2:** Entire garment worked with 2 strands of yarn held together. Refer to chart for color key.

Body: Work foundation chain to begin, then work in pattern stitch. Change hook size and yarn color where indicated in chart.

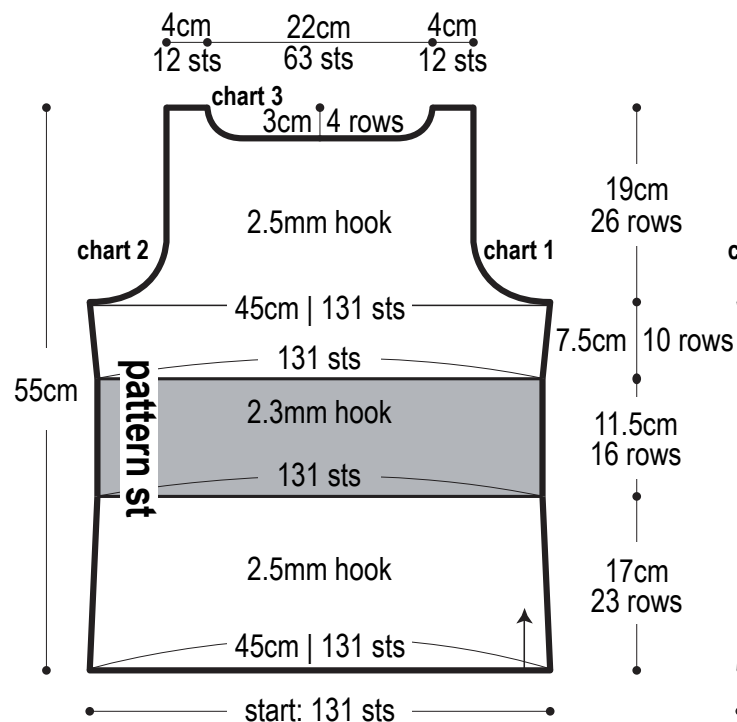
Finishing: Seam shoulders with chain seam (alternating chain st and slip st as needed to maintain pattern). Work edging A around collar. Work edging B around armhole and hem.

Abbreviations:

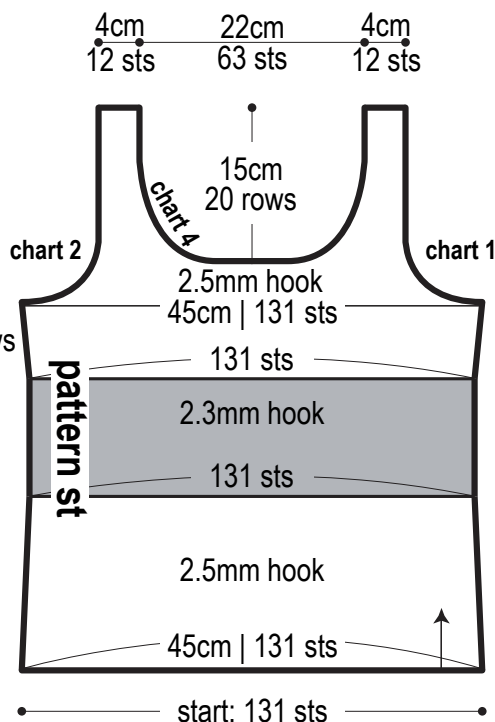
ch = chain

sc = single crochet (US)

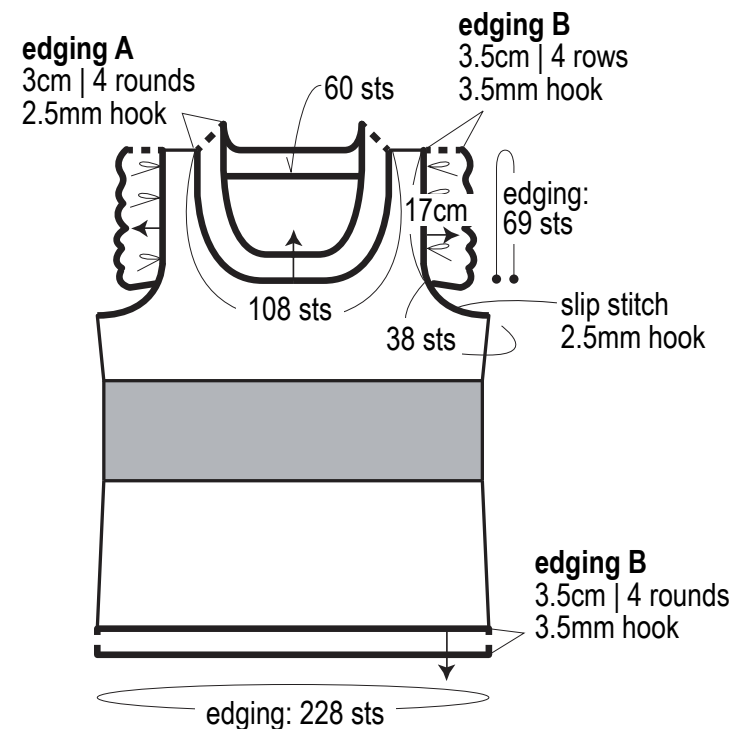
Back



Front



Finishing

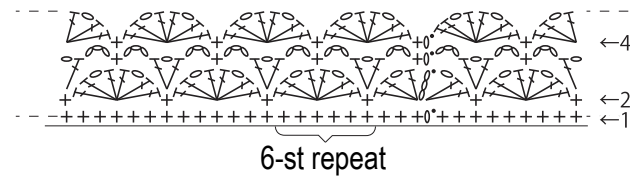


Color key ※Use 2 strands of yarn held together throughout garment.

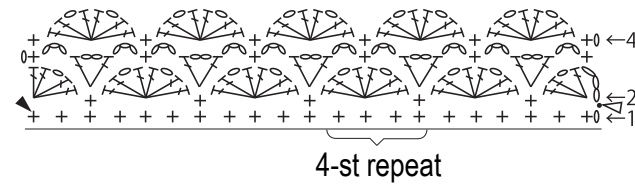
body = color #157 greige blue & color #100TU snow white
 = color #21P ivory & color #102 spring green

neckline | armhole | hem = color #157 greige blue & color #100TU snow white

Edging A 2.5mm hook

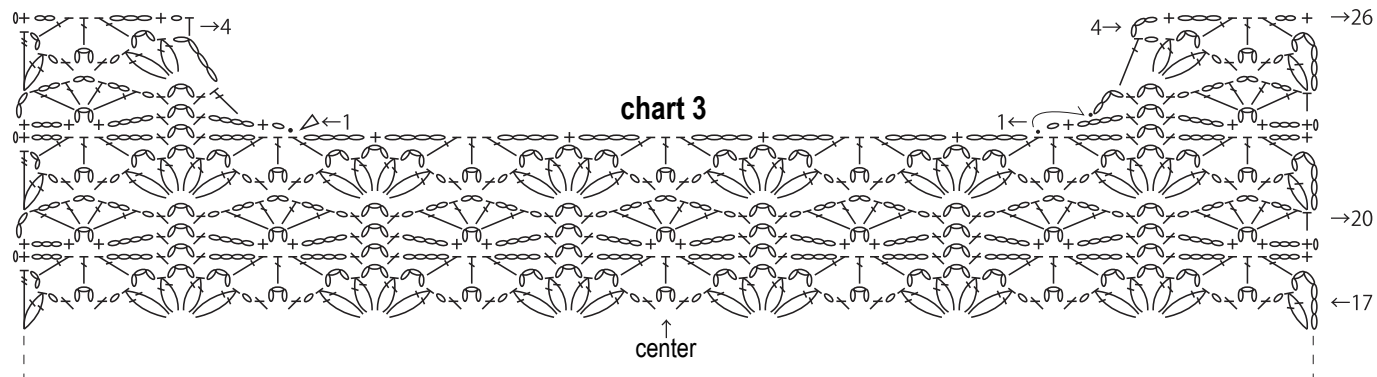


Edging B: armhole 3.5mm hook



- ◁ = join yarn
- ▶ = cut yarn
- ↪ = carry yarn

Back neckline



Front

2.5mm hook: color #100TU snow white & color #157 greige blue

2.3mm hook: color #21P ivory & color #102 spring green

◁ = join yarn

↶ = cut yarn

chart 4

chart 2

chart 1

2.5mm hook

2.3mm hook

2.5mm hook

