

# 218ss-02 Graceful Linen Cardigan



## Suggested yarn:

- Pierrot Yarns Graceful Linen [100% linen; 828 yds/757m per 3.53 oz./100g cone];
  - color #02 Silver Gray, 1 cone [50g]
  - color #18 Oriental Blue, 3 cones [245g]

## Tools/Notions:

- 2.7mm (approx. US 2) and 3.3mm (approx. US 4) knitting needles or sizes necessary to achieve gauge
- cable needle
- 6 buttons (15mm/0.59")

## Finished measurements:

- bust 94cm/37.01"
- cross back width 35cm/13.78"
- back length 54cm/21.26"
- sleeve length 40cm/15.75"

## Gauge (10cm/4" square):

- pattern stitch: 28 sts and 38 rows

*Gauge may vary according to individual knitting style. Change needle size if necessary to achieve gauge. Alternatively, rework pattern with your own gauge measurements.*

## Summary

※Note: Entire garment worked with 2 strands of yarn held together.

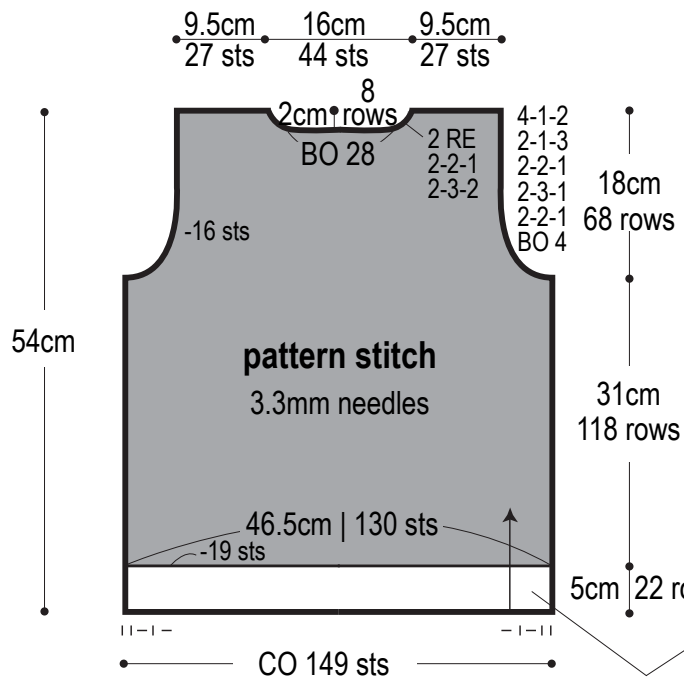
**Body & sleeves:** Cast on with long-tail cast-on method. Work in k1p1 ribbing, then continue in pattern stitch. Work left front as mirror image of right front.

**Finishing:** Seam shoulders with crochet slip stitch seam. Seam sides and sleeve undersides with mattress stitch. Pick up stitches along neckline and front edges; work buttonband in k1p1 ribbing, working buttonhole in right front buttonband only. Bind off in pattern. Seam sleeves to body with crochet slip stitch seam.

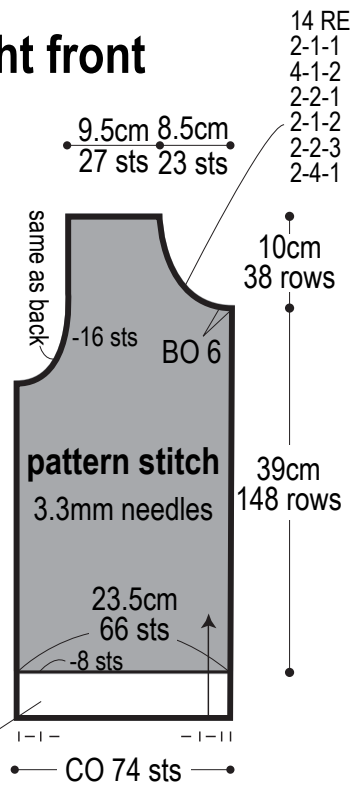
## Abbreviations:

BO = bind off      CO = cast on      k = knit      p = purl      PU = pick up      RE = row(s) even      # # # = rows-stitches-times

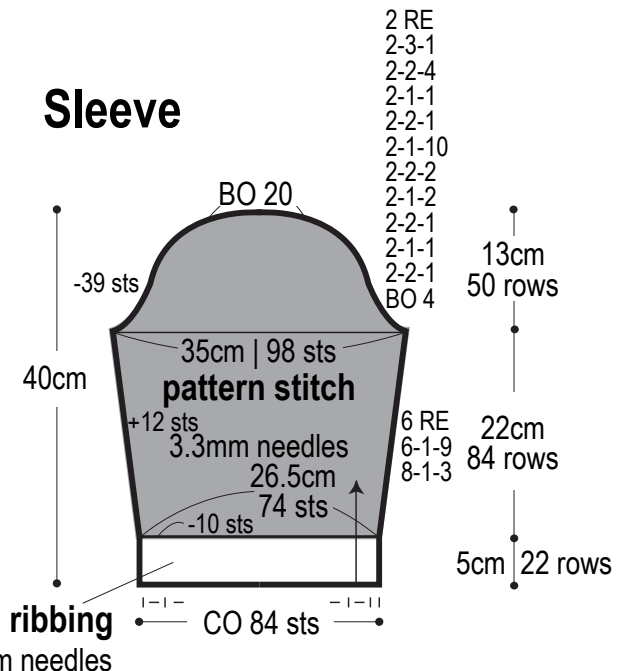
## Back



## Right front



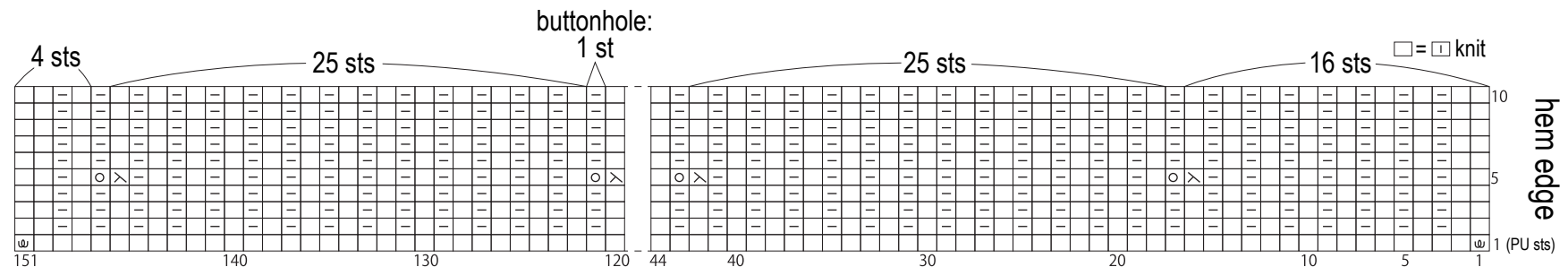
## Sleeve



■ = color #18 Oriental blue  
□ = color #02 silver gray

※Reverse shaping of right front for left front.

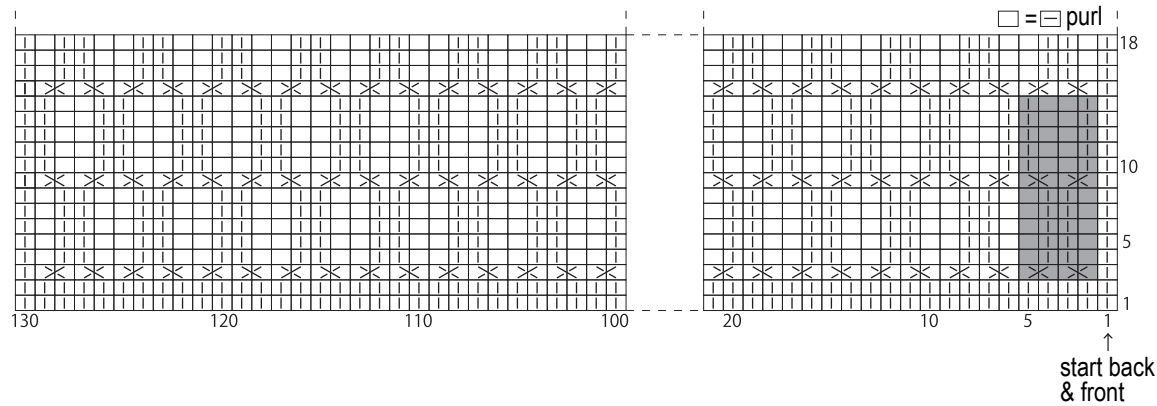
## Right front buttonband with buttonholes 2.7mm needles



ω = backwards loop cast-on increase

ω = backwards loop cast-on increase

## Pattern stitch 3.3mm needles



## Collar & buttonband

k1p1 ribbing  
 2.7mm needles, color #02 silver gray

