

665rsp Cotton Neat Raglan



Suggested yarn:

- Pierrot Yarns Cotton Neat S [100% cotton; 104 yds/95m per 1.41 oz./40g skein];
 - color #34 Beige, 6 skeins [230g]

Tools/Notions:

- 3.6mm (approx. US 5) and 4.2mm (approx. US 6) knitting needles or sizes necessary to achieve gauge
- cable needle

Finished measurements:

- bust 90cm/35.43"
- center back neck-to-cuff 32.5cm/12.80"
- back length 51.5cm/20.28"

Gauge (10cm/4" square):

- garter stitch: 20 sts and 28 rows
- pattern stitch: 26 sts and 28 rows

Gauge may vary according to individual knitting style. Change needle size if necessary to achieve gauge. Alternatively, rework pattern with your own gauge measurements.

Summary

Body (front & back): Cast on with long-tail cast-on method. Work in k1p1 ribbing and then in garter stitch. For front only, work center panel in pattern stitch. Shape raglan edges by binding off stitches where indicated and by working fully fashioned decreases at edges (1 st in from the edge).

Sleeve: Cast on with long-tail cast-on method. Work in k1p1 ribbing and then in garter stitch. Shape raglan edges by binding off stitches where indicated and by working fully fashioned decreases at edges (1 st in from the edge).

Finishing: Seam raglan edges with mattress stitch. Seam underarm gusset with stitches-to-rows mattress stitch. Seam sides and sleeve undersides with mattress stitch (one continuous seam per side of body/sleeve). Pick up stitches around neckline; work collar in k1p1 ribbing in the round. Bind off in pattern.

Abbreviations:

BO = bind off
CO = cast on
k = knit
p = purl
PU = pick up
RE = row(s) even
#-#-# = rows-stitches-times

Diagram illustrating the dimensions and row counts for the hat pattern:

- Top Crown:**
 - Width: 16cm (32 sts)
 - Height: 21cm (58 rows)
 - Stitch pattern: 2 RE 2-1-20 4-1-4
 - BO 5 (5 stitches)
- Body:**
 - Width: 80 sts
 - Height: 51.5cm
 - Stitch pattern: garter stitch
 - Needles: 4.2mm
- Brim:**
 - Width: 45cm | 90 sts
 - Height: 1.5cm (4 rows)
 - Stitch pattern: k1p1 ribbing
 - Needles: 3.6mm
- Bottom:**
 - Width: 7cm | 18 sts (☆ = 7cm | 18 sts)
 - CO 90 sts

The diagram illustrates the construction of a hat with the following details:

- Crown:**
 - Top width: 17cm (34 sts)
 - Decrease rows: 20 rows, decreasing 18 sts to 14 sts & BO.
 - Side slopes: 2 sts each, BO 5.
 - Back slope: 7cm (20 rows), BO 5.
 - Stitch patterns: 6 RE (2-1-6, 2-2-1), 2 RE (2-1-20, 4-1-3).
- Brims:**
 - Width: 19cm (38 sts).
 - Stitch pattern: k1p1 ribbing.
 - Needle size: 3.6mm.
- Main Body:**
 - Width: 45cm (94 sts).
 - Stitch pattern: garter st.
 - Needle size: 4.2mm.

Diagram illustrating the sleeve construction, showing the garter stitch body and the k1p1 ribbing cuff.

Sleeve Body (Garter St):

- Top edge: 1-1-1, 2-3-2, BO 6
- Top width: 7.5cm, 15 sts
- Side slopes: 2 sts, same as back, same as front
- Bottom edge: BO 5, -24 sts, -23 sts, BO 5
- Length: 24.5cm
- Stitch pattern: garter st
- Needles: 4.2mm needles

Sleeve Cuff (k1p1 ribbing):

- Top edge: 2 RE, 2-1-2
- Top width: 36cm, 72 sts
- Length: 19cm, 54 rows
- Stitch pattern: k1p1 ribbing
- Needles: 3.6mm needles
- Bottom edge: CO 68 sts

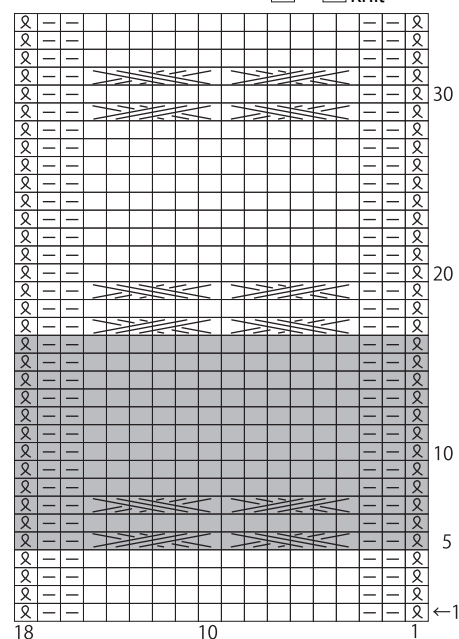
Additional Measurements:

- 2cm: 6 rows
- 1.5cm: 4 rows

Notes:


- *Reverse shaping for left sleeve.

4.2mm needles

$$\square = \square \text{ I knit}$$


 = C6F

= C6B

 = 12-row repeat

3.6mm needles