

218ss-06 Pochette Cape



Suggested yarn:

- Pierrot Yarns Pochette [50% merino wool, 50% cotton; 131 yds/120m per 1.41 oz./40g skein]; color #07 Emerald Green, 8 skeins [300g]

Tools/Notions:

- 3.6mm (approx. US 5) knitting needles or size necessary to achieve gauge
- 3.5mm (US E) crochet hook or size necessary to achieve gauge
- cable needle
- 1 button (20mm/0.79" diameter)

Finished measurements:

- center back neck-to-cuff 38.5cm/15.16"
- back length 48.5cm/19.09"

Gauge (10cm/4" square):

- pattern stitch A: 29 sts and 34 rows
- pattern stitch B: 24 sts and 34 rows

Gauge may vary according to individual knitting style. Change needle size if necessary to achieve gauge. Alternatively, rework pattern with your own gauge measurements.

Summary

Back: Cast on with long-tail cast-on method. Work in pattern stitches A & B.

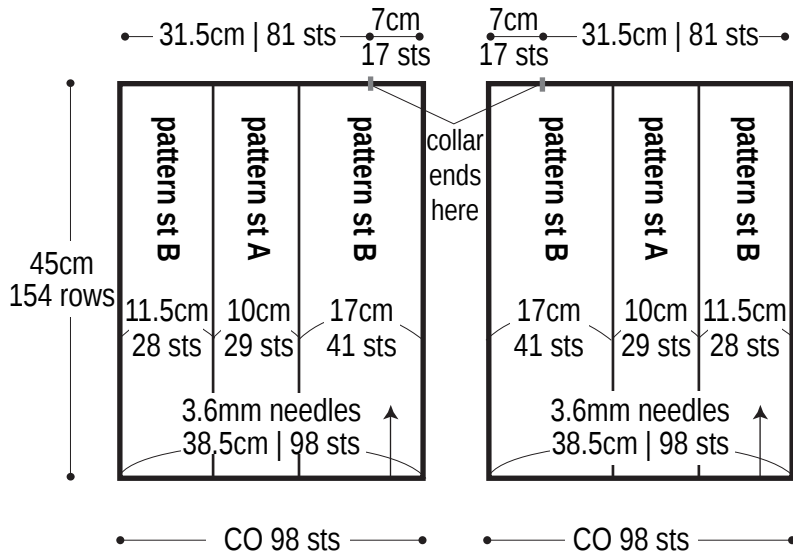
Front: Cast on with long-tail cast-on method. Work in pattern stitches A & B and k1p1 ribbing. Work buttonhole in right front buttonband as you go. When front is finished, continue working buttonband, which will form back collar (12 sts + 1 st (use backwards loop cast-on increase for this increase)). When finished with collar, bind off. Work left front as mirror image of right front but without buttonholes.

Finishing: Seam center back with mattress stitch. Seam shoulders with crochet slip stitch seam. With wrong sides together, seam ends of collar with whipstitch. Seam collar to back using stitches-to-rows mattress stitch. With 2 strands of yarn, crochet 2 cords to attach to sides (see finishing schematic).

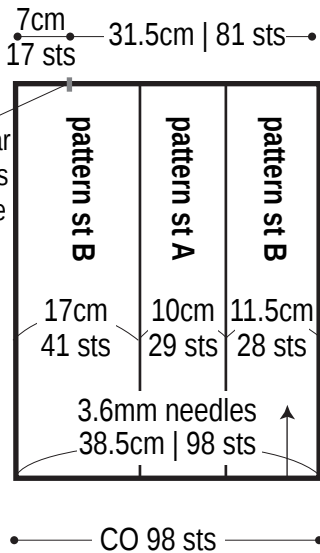
Abbreviations:

BO = bind off ch = chain st CO = cast on k = knit p = purl

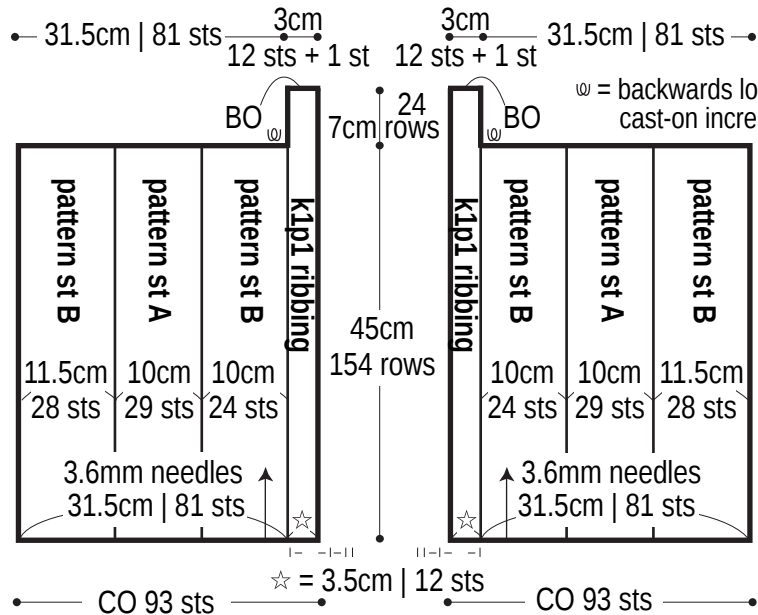
Left back



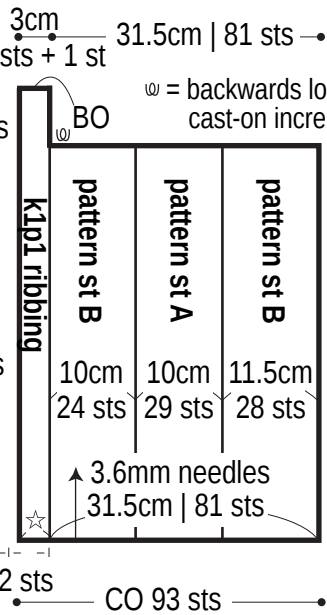
Right back



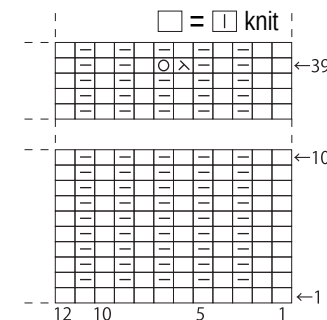
Right front



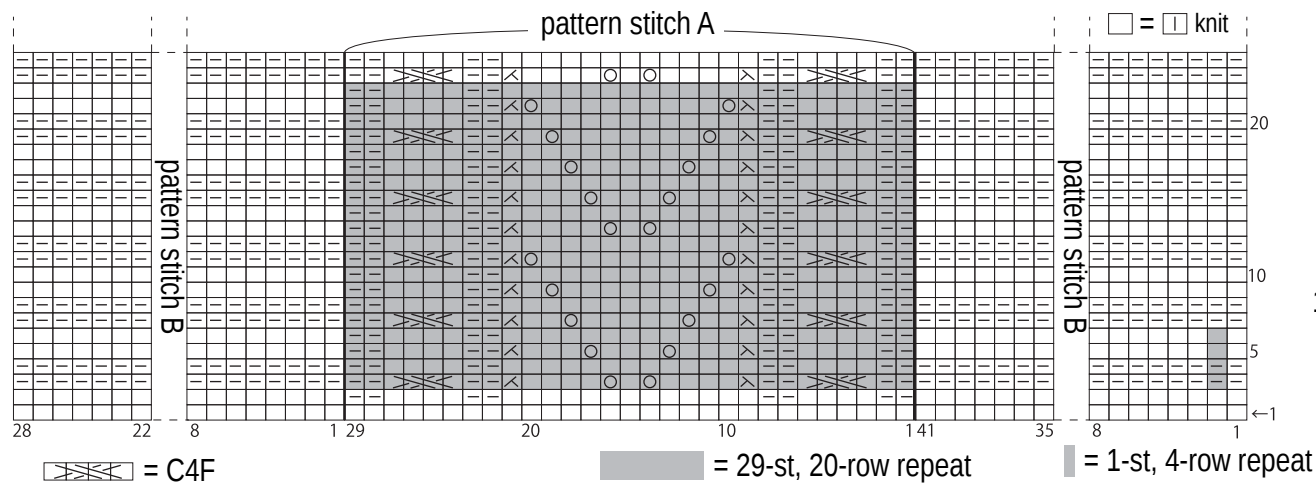
Left front



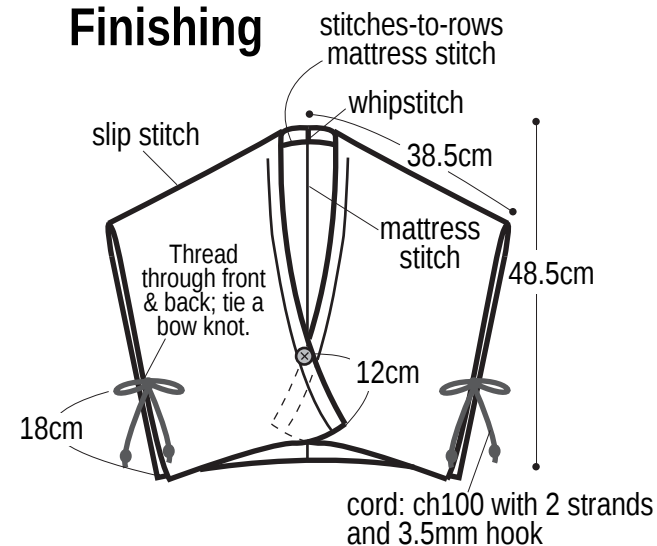
Buttonhole right front



Left back 3.6mm needles



Finishing



*By leaving sides untied, you can use this garment as a scarf.