

218ss-03 Julien Lace Sleeve Pullover



Suggested yarn:

- Pierrot Yarns Julien [95% silk, 5% polyester; 192 yds/176m per 1.41 oz./40g skein]; color #81 cream yellow, 10 skeins [385g]

Tools/Notions:

- 3.9mm (approx. US 6) knitting needles or size necessary to achieve gauge
- 2.3mm (approx. US B) crochet hook or size necessary to achieve gauge

Finished measurements:

- bust 92cm/36.22"
- cross back width 40cm/15.75"
- back length 49.5cm/19.49"
- sleeve length 41cm/16.14"

Gauge (10cm/4" square):

- stockinette stitch: 22 sts and 29 rows
- pattern stitch: 31 sts and 20 rows

Gauge may vary according to individual crochet style. Change hook size if necessary to achieve gauge. Alternatively, rework pattern with your own gauge measurements.

Summary

❖ **Note 1:** Like all Japanese patterns, crochet stitch counts given here for foundation chains do not include any chain sts needed for turning posts.

❖ **Note 2:** For body only, work with 2 strands of yarn held together.

Body: With knitting needles and yarn held doubled, cast on with long-tail cast-on method. Work in garter stitch and then st st.

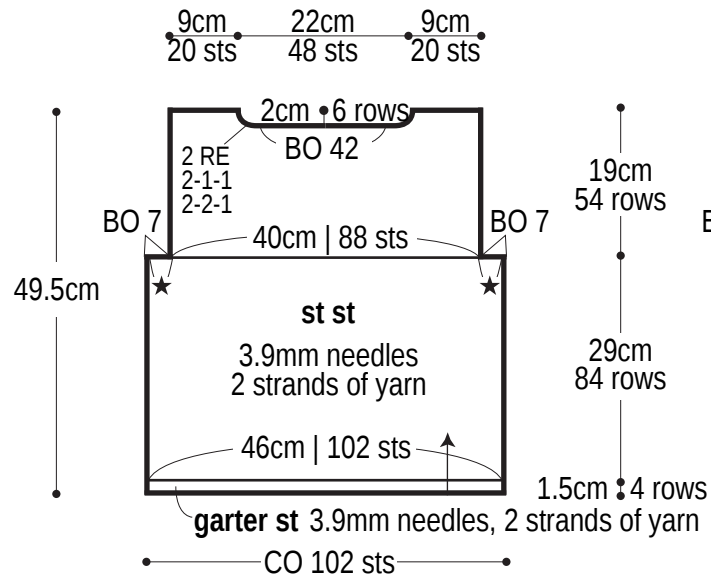
Sleeve (make 2): With crochet hook and one strand of yarn, work foundation chain to begin, then work sleeve in pattern stitch.

Finishing: Seam shoulders with crochet slip stitch seam. Seam sides with mattress stitch. Seam sleeve to body with either ladder stitch or mattress stitch. Match up sections marked with ★ and seam with whipstitch. Seam sleeve undersides with chain seam (alternating ch st and slip st as needed to maintain pattern). Crochet sc edging in the round around neckline. Crochet edging in the round around each cuff.

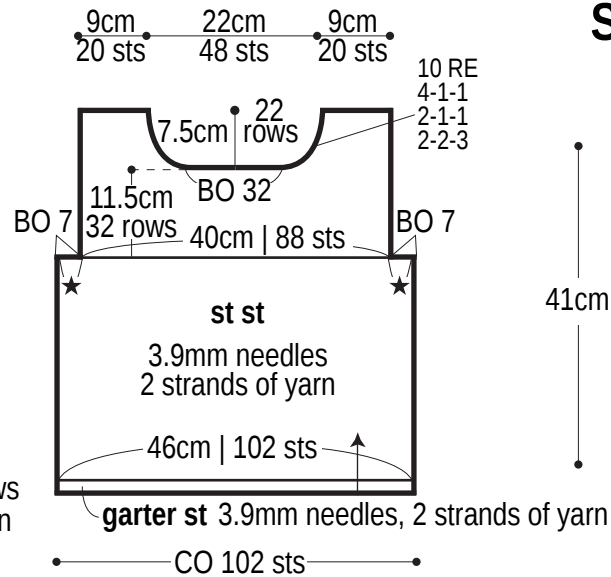
Abbreviations:

BO = bind off ch = chain CO = cast on RE = row(s) even sc = single crochet (US) st st = stockinette stitch #-#-# = rows-stitches-times

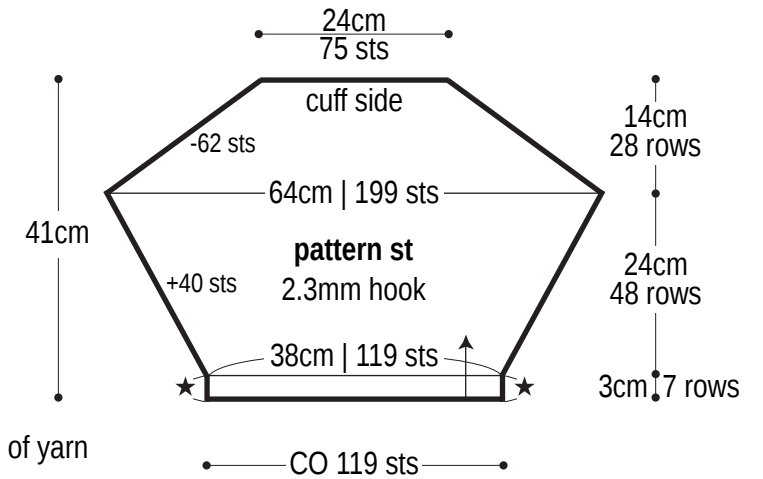
Back



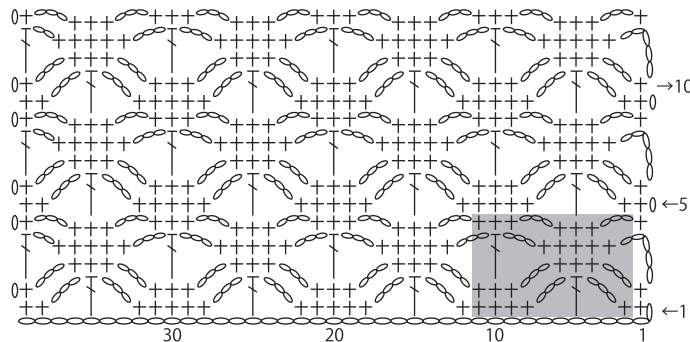
Front



Sleeve



Pattern stitch 2.3mm hook



Edging

2.3mm hook

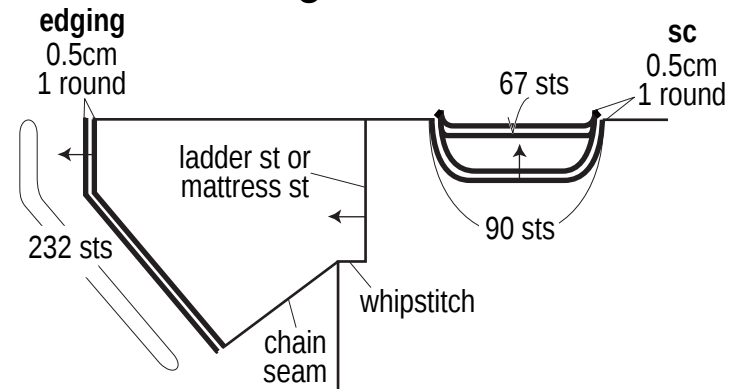
2-st repeat

---o-x-o-x-o-x-o-x-o-x--- ←1

■ = 10-st, 4-row repeat

Finishing

2.3mm hook



Sleeve chart 2.3mm hook

※ Reverse shaping for other half of sleeve.

