

# 1232 Mite Shrug



## Suggested yarn:

- Pierrot Yarns Mite [70% acrylic, 30% eks (synthetic); 93 yds/85m per 1.41 oz./40g skein];
  - color #02 Light Brown, 7 skeins [260g]

## Tools/Notions:

- 3.9mm (approx. US 6) and 4.5mm (US 7) knitting needles or sizes necessary to achieve gauge
- cable needle

## Finished measurements:

- center back neck-to-cuff 60cm/23.62"

## Gauge (10cm/4" square):

- pattern stitch: 15 sts and 24 rows
- k2p2 ribbing: 20 sts and 30 rows

*Gauge may vary according to individual knitting style. Change needle size if necessary to achieve gauge. Alternatively, rework pattern with your own gauge measurements.*

## Summary

**Body:** Cast on with long-tail cast-on method. Work in k2p2 ribbing, then in pattern stitch, and then in k2p2 ribbing again. Bind off in pattern. Seam sections between markers (see finishing schematic).

**Finishing:** Pick up stitches around outer edge of shrug; work k2p2 ribbing in the round. Bind off in pattern.

## Abbreviations:

BO = bind off

C4B = slip 2 stitches to cable needle and hold in back of work, k2, k2 from cable needle

C4F = slip 2 stitches to cable needle and hold in front of work, k2, k2 from cable needle

CO = cast on

k = knit

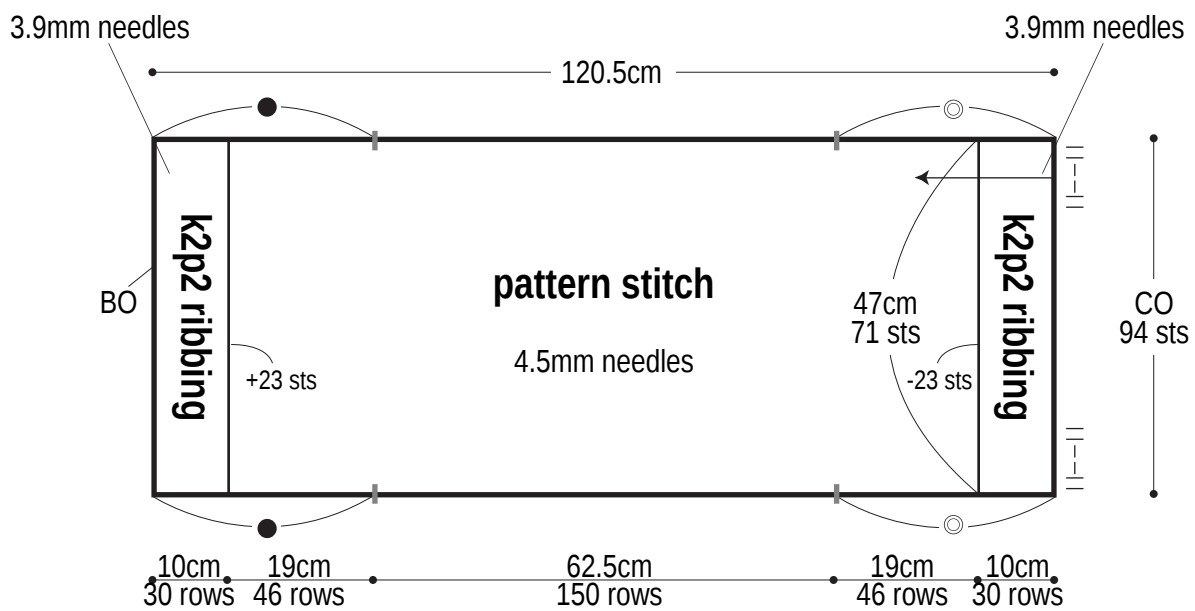
k2tog = knit 2 stitches together

p = purl

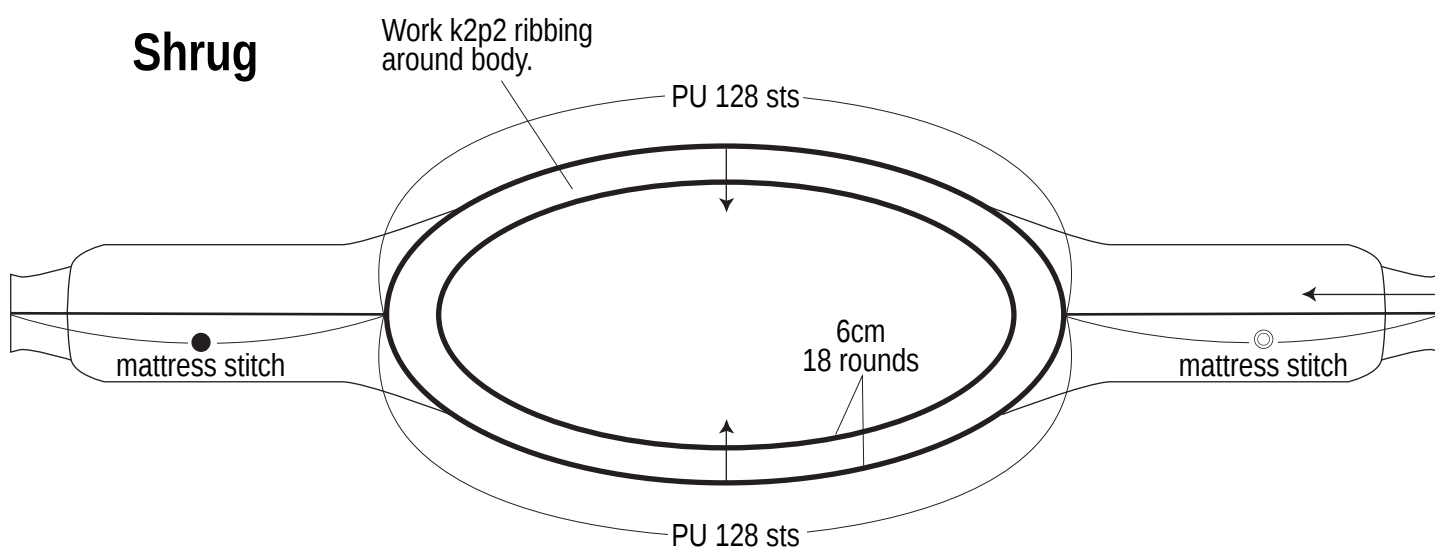
pm = place marker

PU = pick up

## Body

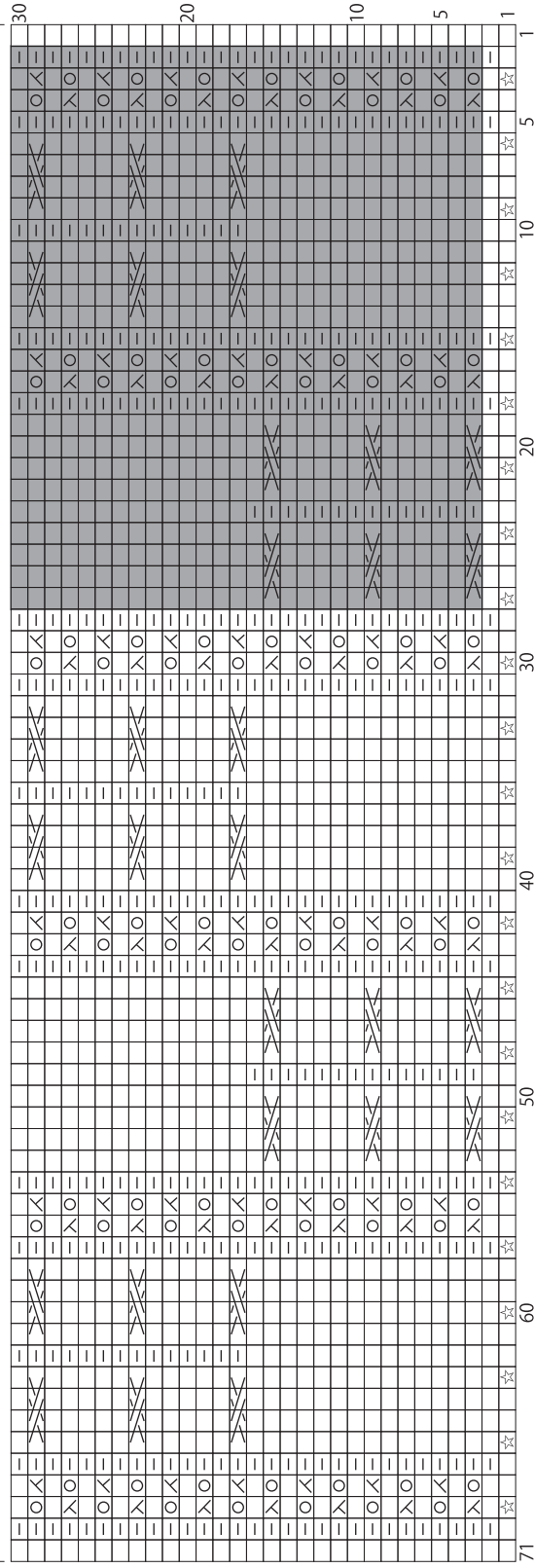
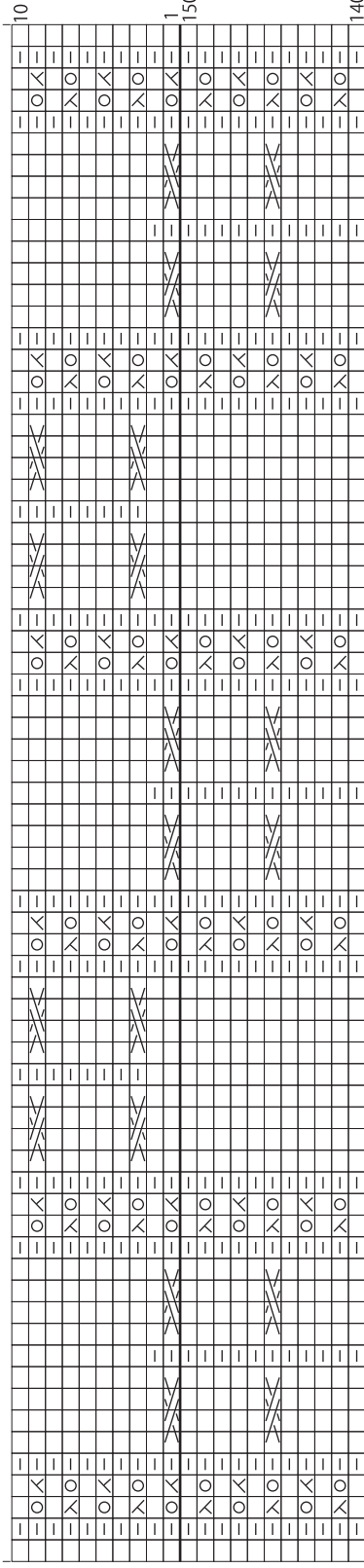
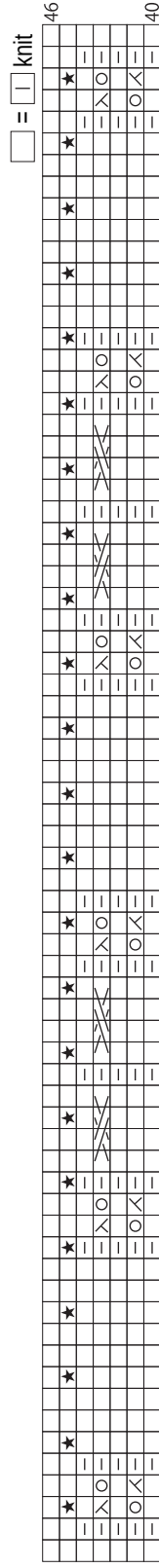


## Shrug



# Pattern stitch

4.5mm needles



☒ = C4B

☒ = C4F

★ = ☒ = twisted knit st

☆ = ☒ = k2tog

= 1 repeat = 26 sts & 28 rows