

# 1232 Mite Pullover



### Suggested yarn:

- Pierrot Yarns Mite [70% acrylic, 30% eks (synthetic); 93 yds/85m per 1.41 oz./40g skein];
  - color #01 Pale Peach, 1 skein [40g]
  - color #14 Light Gray, 9 skeins [335g]

### Tools/Notions:

- 3.9mm (approx. US 6) and 4.5mm (US 7) knitting needles or sizes necessary to achieve gauge

### Finished measurements:

- bust 94cm/37.01"
- cross back width 40cm/15.75"
- back length 58cm/22.83"
- sleeve length 52cm/20.47"

### Gauge (10cm/4" square):

- pattern stitch: 19 sts and 23 rows

*Gauge may vary according to individual knitting style. Change needle size if necessary to achieve gauge. Alternatively, rework pattern with your own gauge measurements.*

### Summary

**Body & sleeve:** With color #01, cast on with long-tail cast-on method. Work in k1p1 ribbing. Change to color #14 and work in pattern stitch.

**Finishing:** Seam shoulders with crochet slip stitch seam. With color #01, pick up stitches around neckline and work k1p1 ribbing in the round. Bind off in pattern. Seam sleeves to body with crochet slip stitch seam. Seam underarm gusset (marked with ★) with stitches-to-rows mattress stitch. Seam sleeve and side with one continuous mattress stitch seam per side of body.

### Abbreviations:

BO = bind off

CO = cast on

k = knit

p = purl

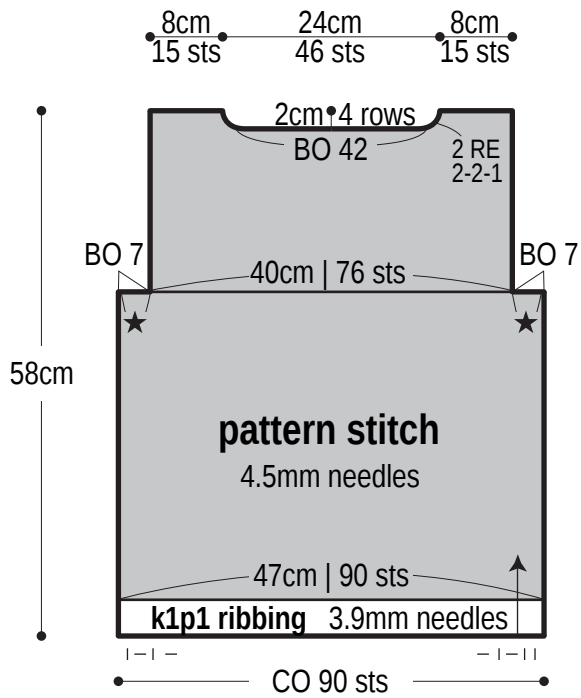
PU = pick up

RE = row(s) even

right cross stitch = insert R needle into second st on L needle and k it without dropping first st off the needle; grab first st with R needle and pull it through the second one; k the first st.

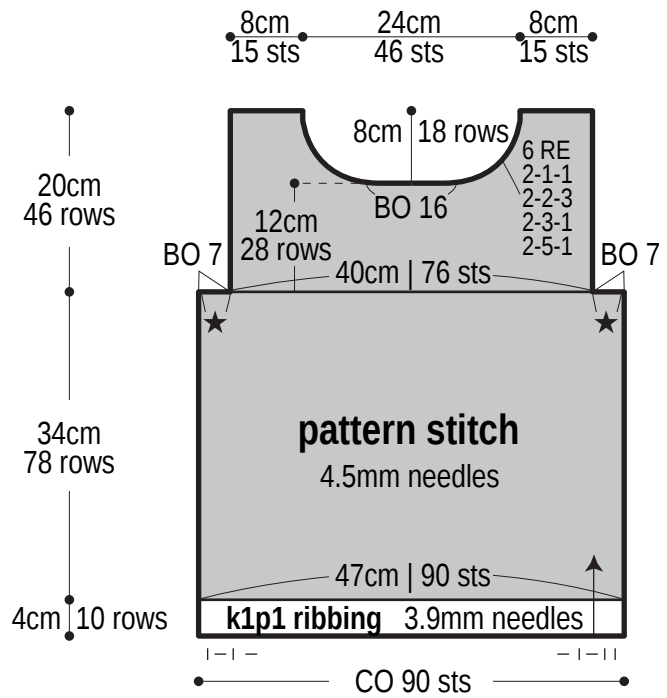
#-#-# = rows-stitches-times

## Back

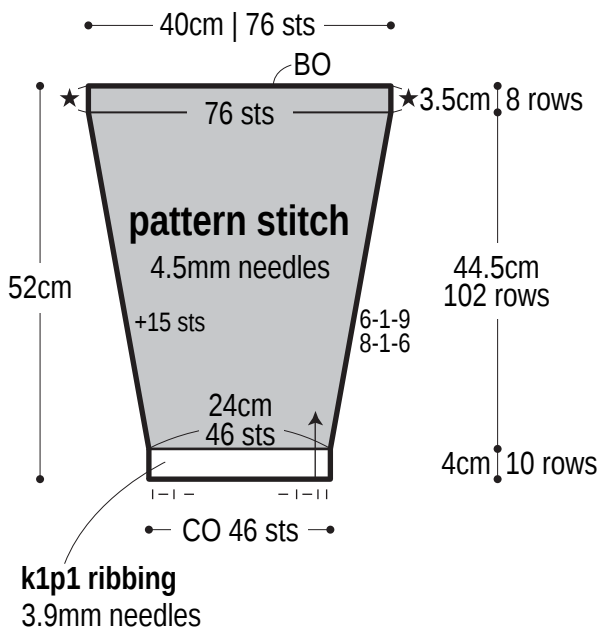


□ = color #01 pale peach □ = color #14 light gray

## Front

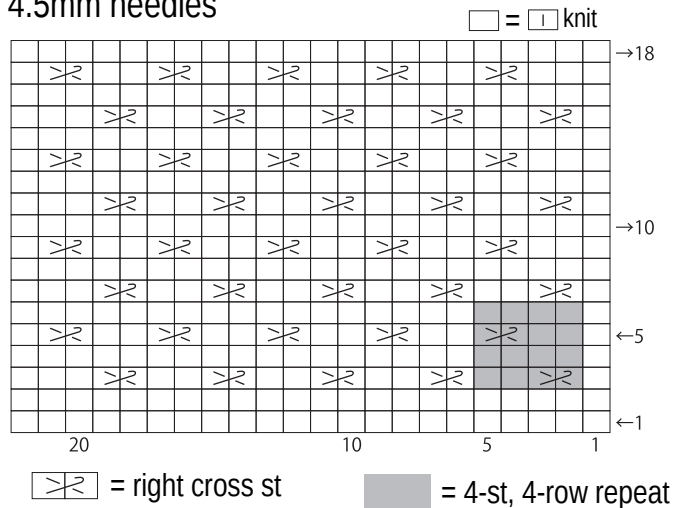


## Sleeve



## Pattern stitch

4.5mm needles



## Finishing

