

830scs Sailor Collar Stole



Suggested yarn:

- Pierrot Yarns Chameleon Camera Summer [45% cotton, 40% wool, 15% nylon; 416 yds/380m per 3.53 oz./100g skein]; color #03 Berry Mix, 1 skein [85g]

Tools/Notions:

- 3.3mm (approx. US 3) knitting needles or size necessary to achieve gauge
- 2.3mm (approx. US B) crochet hook or size necessary to achieve gauge
- cable needle

Finished measurements:

- width 34.5cm/13.58"
- length 69cm/27.17"

Gauge (10cm/4" square):

- pattern stitches A & B: 30 sts and 31.5 rows

Gauge may vary according to individual knitting style. Change needle size if necessary to achieve gauge. Alternatively, rework pattern with your own gauge measurements.

Summary

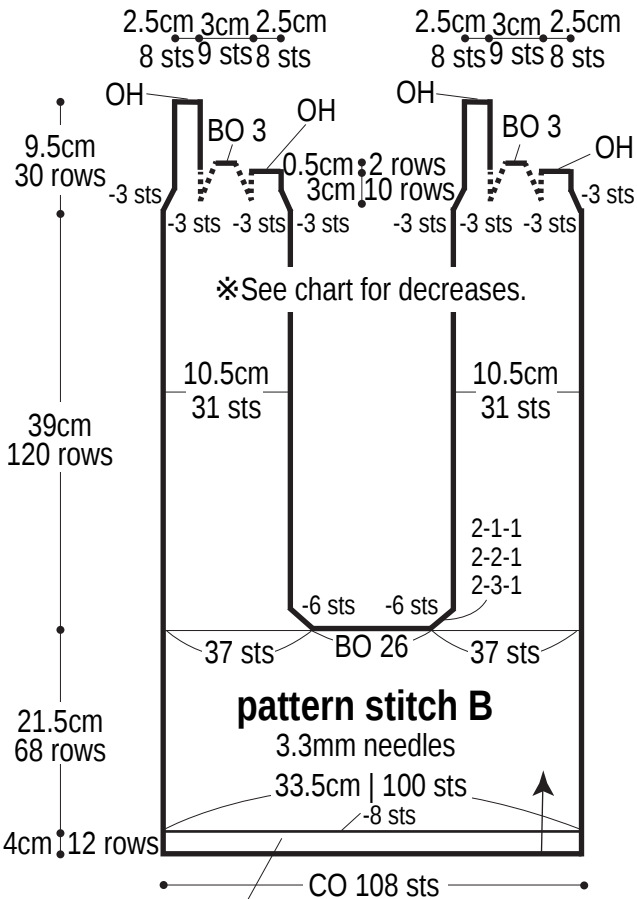
Body: Cast on with long-tail cast-on method. Work in pattern stitch. When finished, place stitches on stitch holder (s); do not bind off.

Finishing: Graft live stitches at ends of stole together using Kitchener stitch. Referring to finishing schematic, sew a running stitch loosely where shown and cinch the fabric up. Then seam with mattress stitch. Crochet 1 round of edging around edges of stole.

Abbreviations:

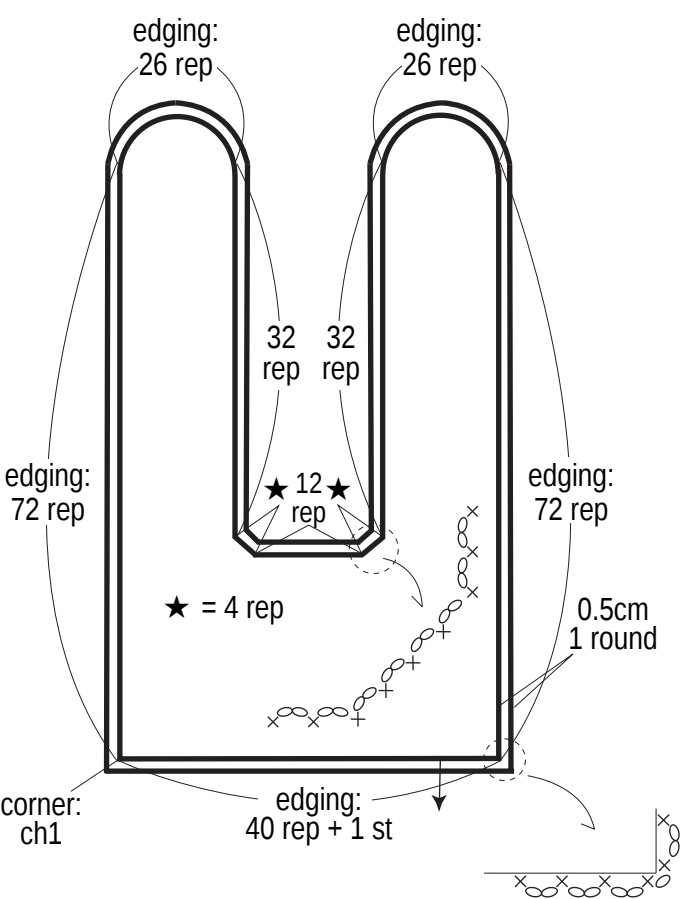
BO = bind off
ch = chain stitch
CO = cast on
OH = on hold (place on stitch holder)
rep = repeat(s)
#-#-# = rows-stitches-times

Stole schematic

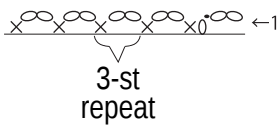


pattern stitch A
3.3mm needles

Edging 2.3mm hook

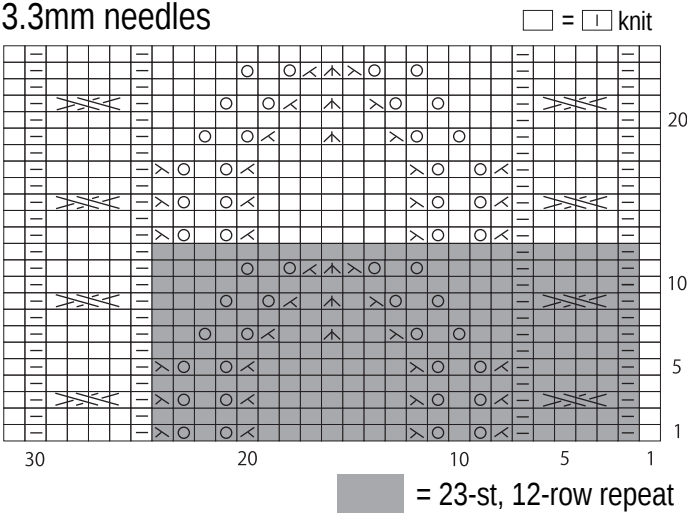


Edging 2.3mm hook



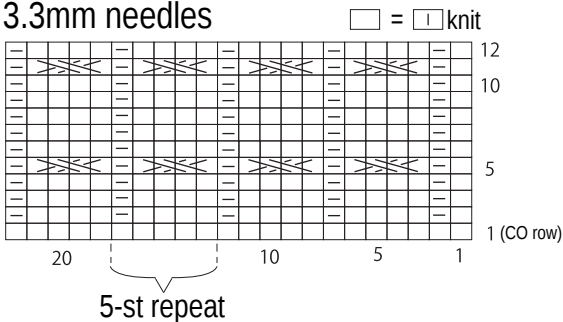
Pattern stitch B

3.3mm needles

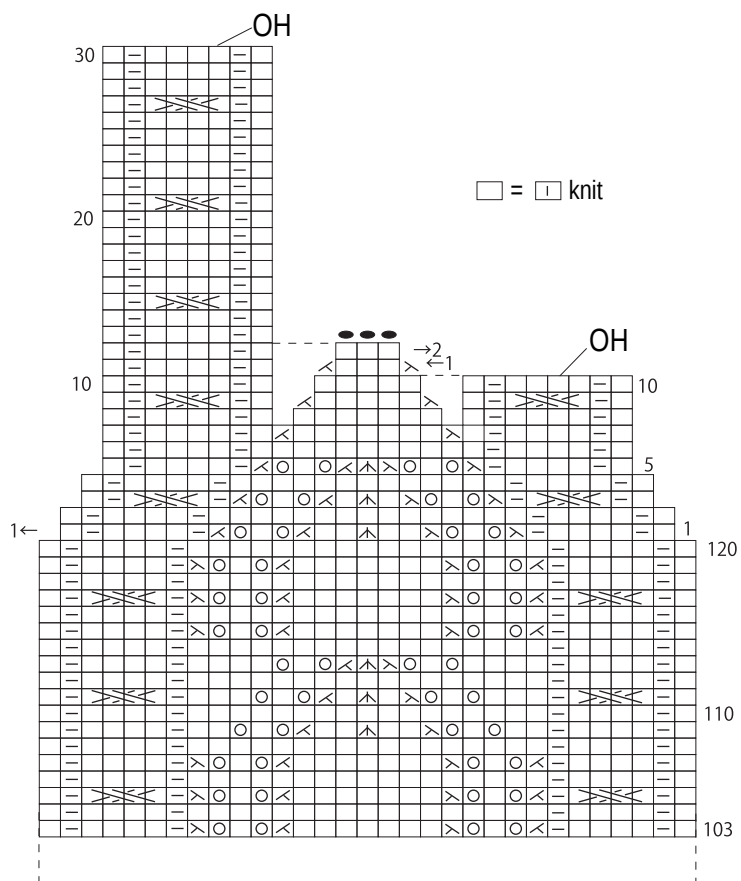
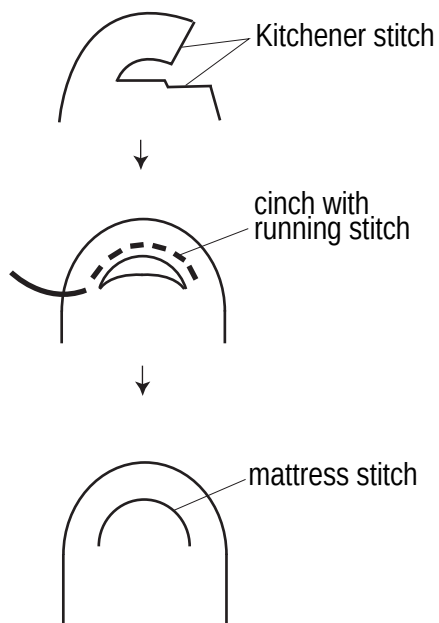


Pattern stitch A

3.3mm needles



Finishing



Stitch chart

3.3mm needles

