

217w-02 Leaf Cardigan



Suggested yarn:

- Pierrot Yarns Dandy Alice [100% Wool - Merino; 151yds/138m per 1.41oz/40g skein]; color #02 Rain Cloud, 8 skeins [310g]
- Pierrot Yarns Lourdes [60% Goat - Mohair, 40% Silk; 306yds/280m per 0.88oz/25g skein]; color #03 Pearl Grey, 4 skeins [90g]

Tools/Notions:

- 4.2mm (approx. US 6) and 4.5mm (US 7) knitting needles or sizes necessary to achieve gauge
- 5 buttons (23mm/0.91")

Finished measurements:

- bust 104cm/40.94"
- center back neck-to-cuff 72.5cm/28.54"
- back length 56.5cm/22.24"

Gauge (10cm/4" square):

- seed stitch: 20 sts and 36 rows
- pattern stitch: 23 sts and 28 rows

Gauge may vary according to individual knitting style. Change needle size if necessary to achieve gauge. Alternatively, rework pattern with your own gauge measurements.

Summary

✿**Note:** entire garment worked with 2 strands of yarn held together (1 strand of Dandy Alice and 1 strand of Lourdes).

Body: Cast on with long-tail cast-on method. Work in seed stitch, then continue in pattern stitch. Reverse shaping of right front for left front.

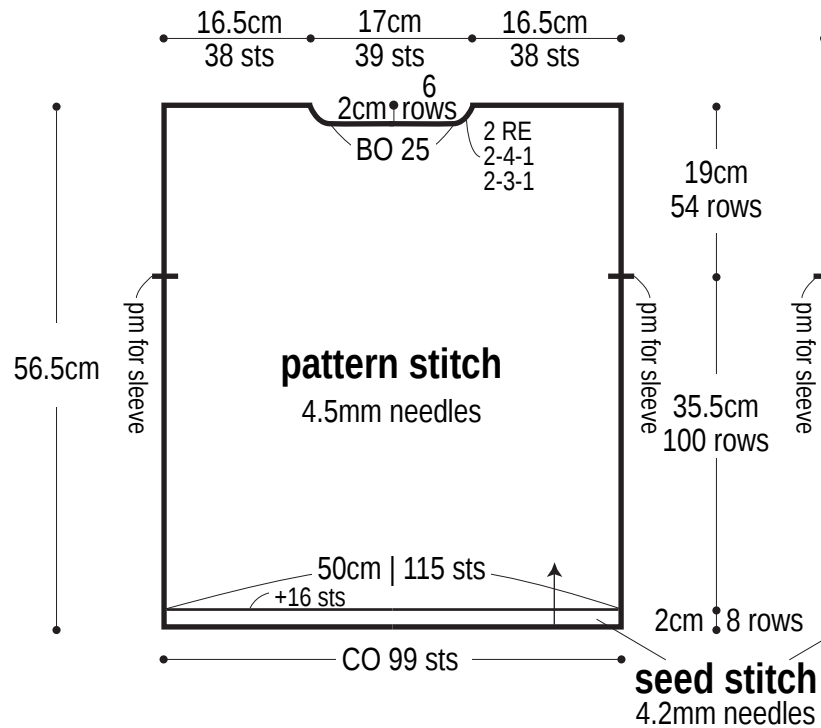
Sleeve (make 2): Work as for body pieces. Bind off.

Finishing: Seam shoulders with slip stitch seam. Seam sleeves to body with slip stitch seam. Seam sides and sleeve undersides with mattress stitch (one continuous seam per side of body). Pick up stitches around neckline; work collar in seed stitch. Bind off. Pick up stitches along front edges (right front and left front, respectively). Work buttonband in seed stitch, working buttonholes in right front band only. Bind off. Fasten button to left front buttonband.

Abbreviations:

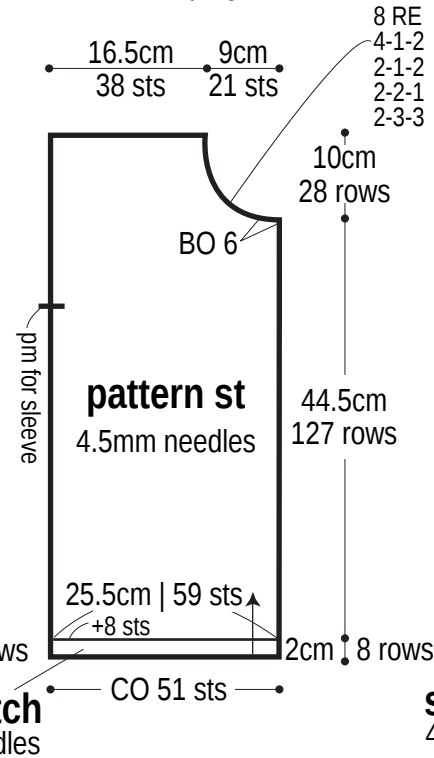
BO = bind off CO = cast on k2tog = knit 2 stitches together pm = place marker PU = pick up RE = row(s) even ssk = slip, slip, knit #-#-# = rows-stitches-times

Back

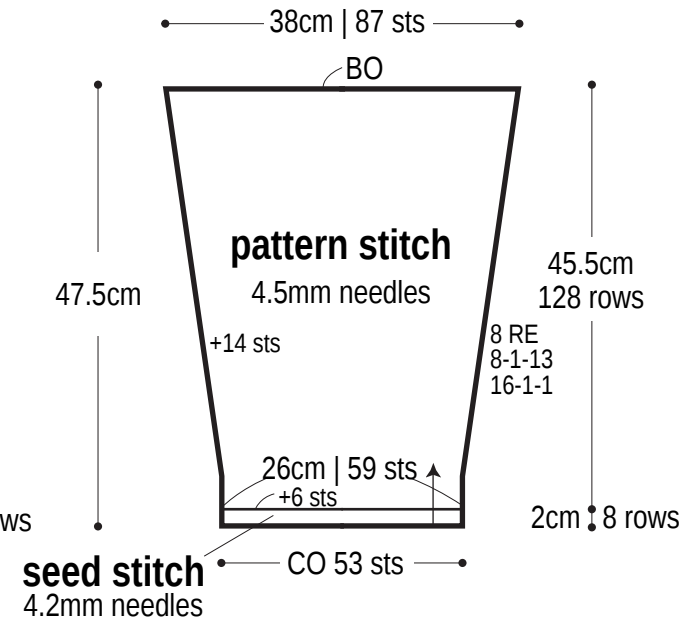


Right front

※Reverse shaping for left front.

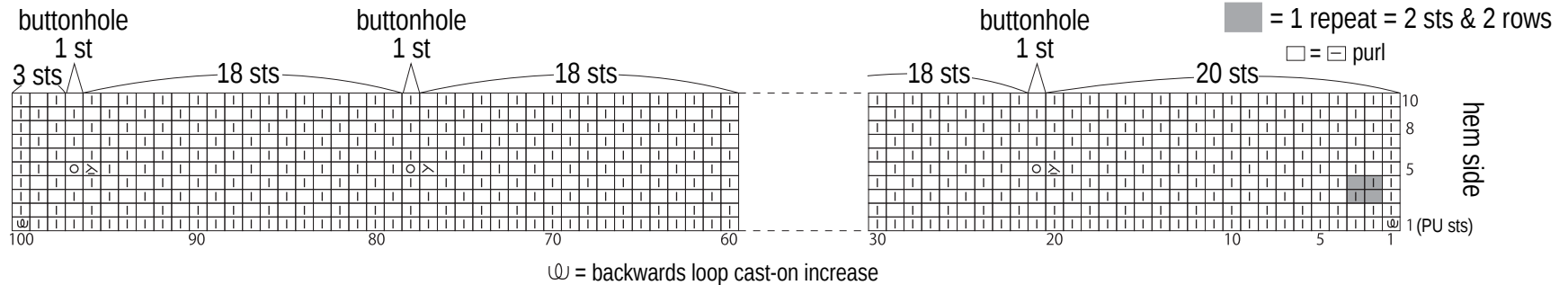


Sleeve

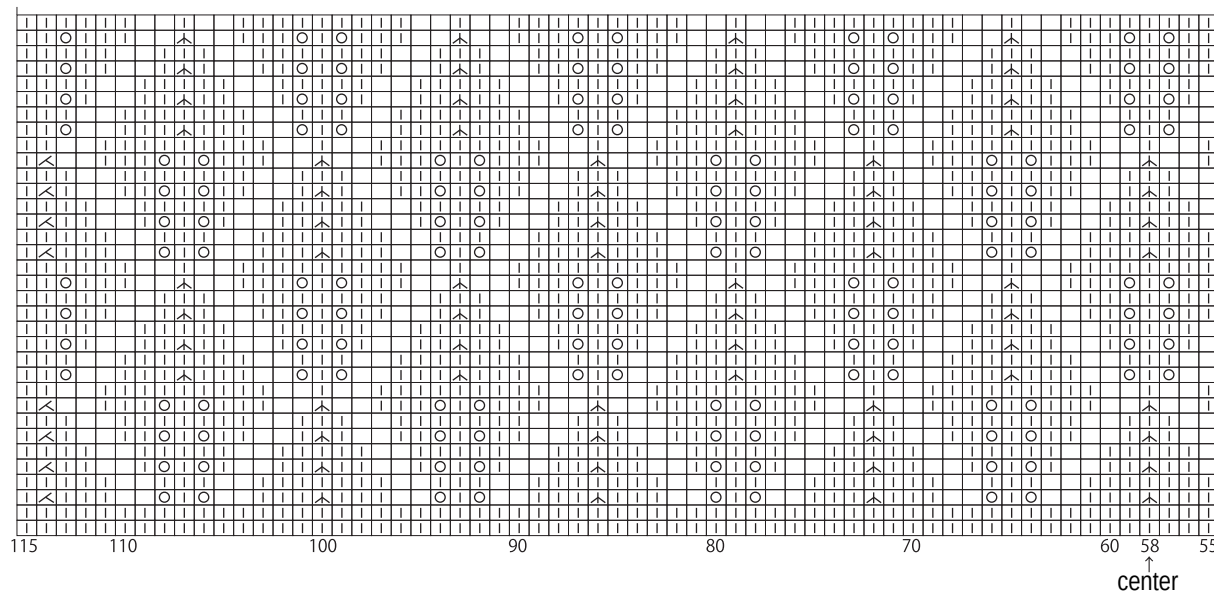


Right front buttonband with buttonholes

seed stitch, 4.2mm needles



Back 4.5mm needles



⊗ = k2tog

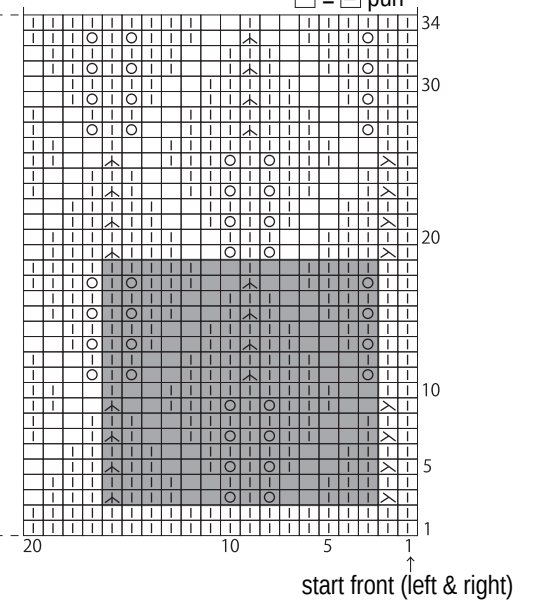
⊗ = ssk

⊗ = k3tog

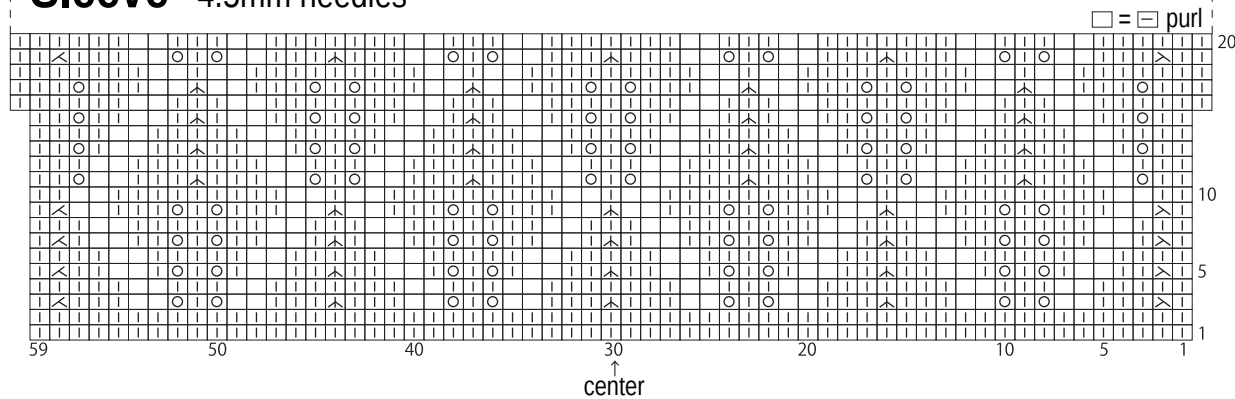
■ = 1 repeat
= 14 sts & 16 rows

□ = ⊞ purl

Collar & buttonband seed stitch, 4.2mm needles



Sleeve 4.5mm needles



□ = ⊞ purl

