

217w-06 Lara Raglan Sweater



Suggested yarn:

- Pierrot Yarns Lara [57% cotton, 43% alpaca; 104 yds/95m per 1.76 oz./50g skein]; color #11 Frost Gray, 7 skeins [330g]

Tools/Notions:

- 6.6mm (approx. US 10.5) and 7.0mm (no US equivalent) knitting needles or sizes necessary to achieve gauge

Finished measurements:

- bust 96cm/37.80"
- center back neck-to-cuff 73.5cm/28.94"
- back length 60cm/23.62"

Gauge (10cm/4" square):

- pattern stitch: 12 sts and 15 rows
- k1p1 ribbing: 12.5 sts and 17.5 rows

Gauge may vary according to individual knitting style. Change needle size if necessary to achieve gauge. Alternatively, rework pattern with your own gauge measurements.

Summary

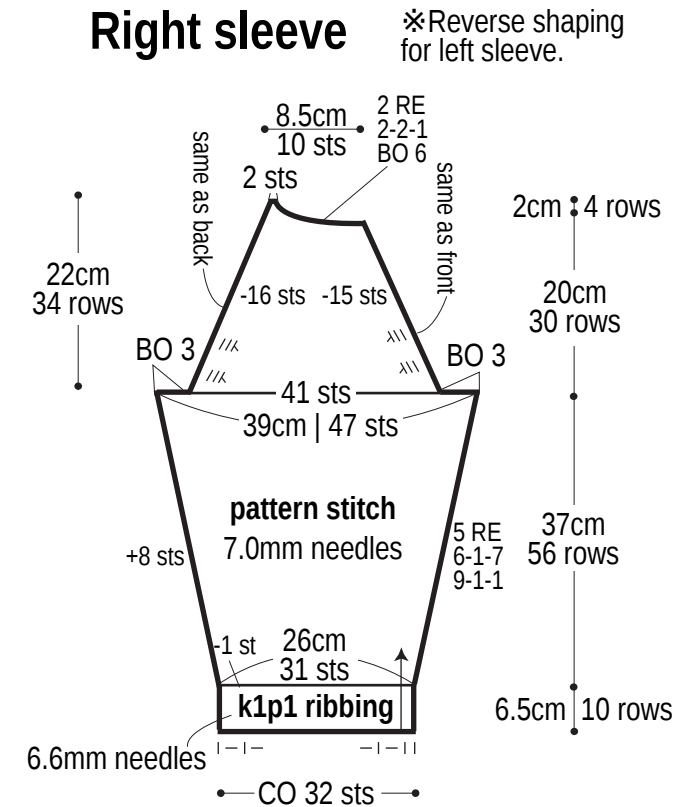
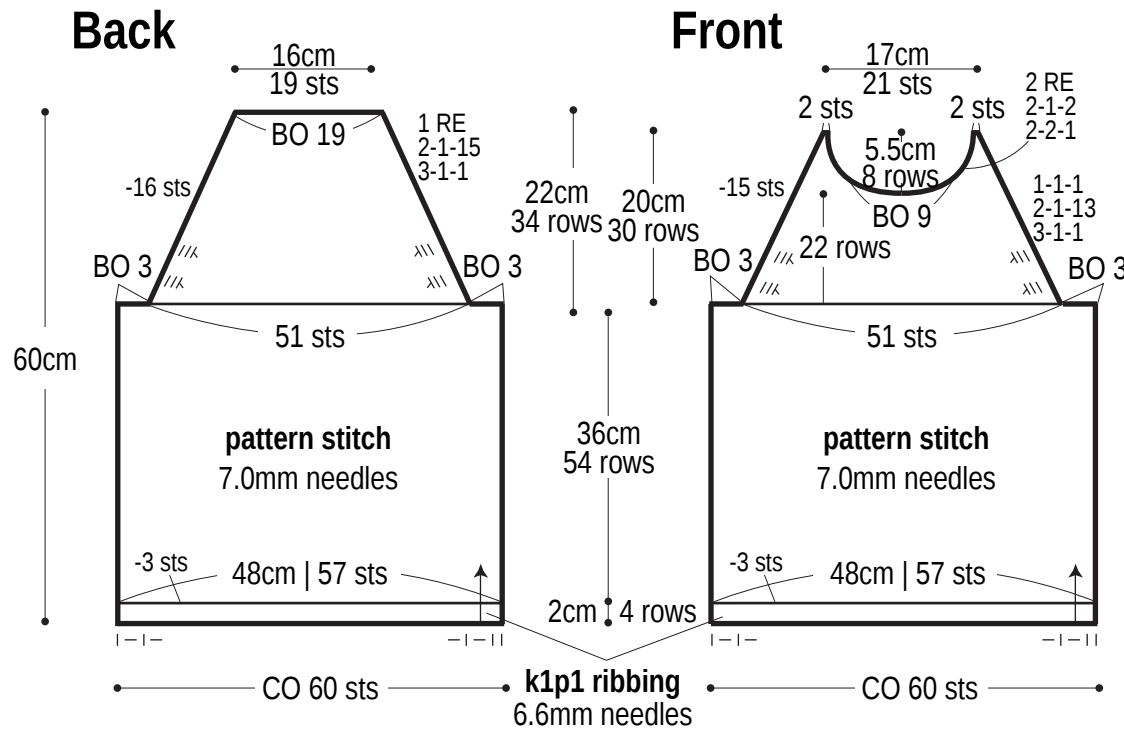
Body: Cast on with long-tail cast-on method. Work in k1p1 ribbing, then continue in pattern stitch. Shape raglan edges by binding off stitches where indicated and by working fully fashioned decreases (3 sts in from the edge).

Sleeve (make 2): Cast on as for body. Work in k1p1 ribbing, then continue in pattern stitch. Shape raglan edges by binding off stitches where indicated and by working fully fashioned decreases (3 sts in from the edge).

Finishing: Seam raglan edges with mattress stitch. Seam underarm gusset with stitches-to-rows mattress stitch. Seam sides and sleeves with one continuous mattress stitch seam per side of body. Pick up stitches around neckline; work collar in k1p1 ribbing in the round. Bind off in pattern.

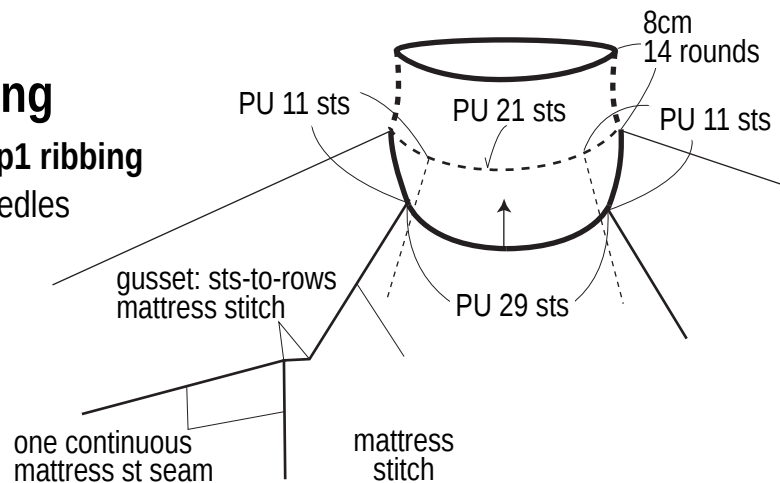
Abbreviations:

BO = bind off CO = cast on k = knit p = purl PU = pick up RE = row(s) even #-#-# = rows-stitches-times



Finishing

collar: k1p1 ribbing
6.6mm needles



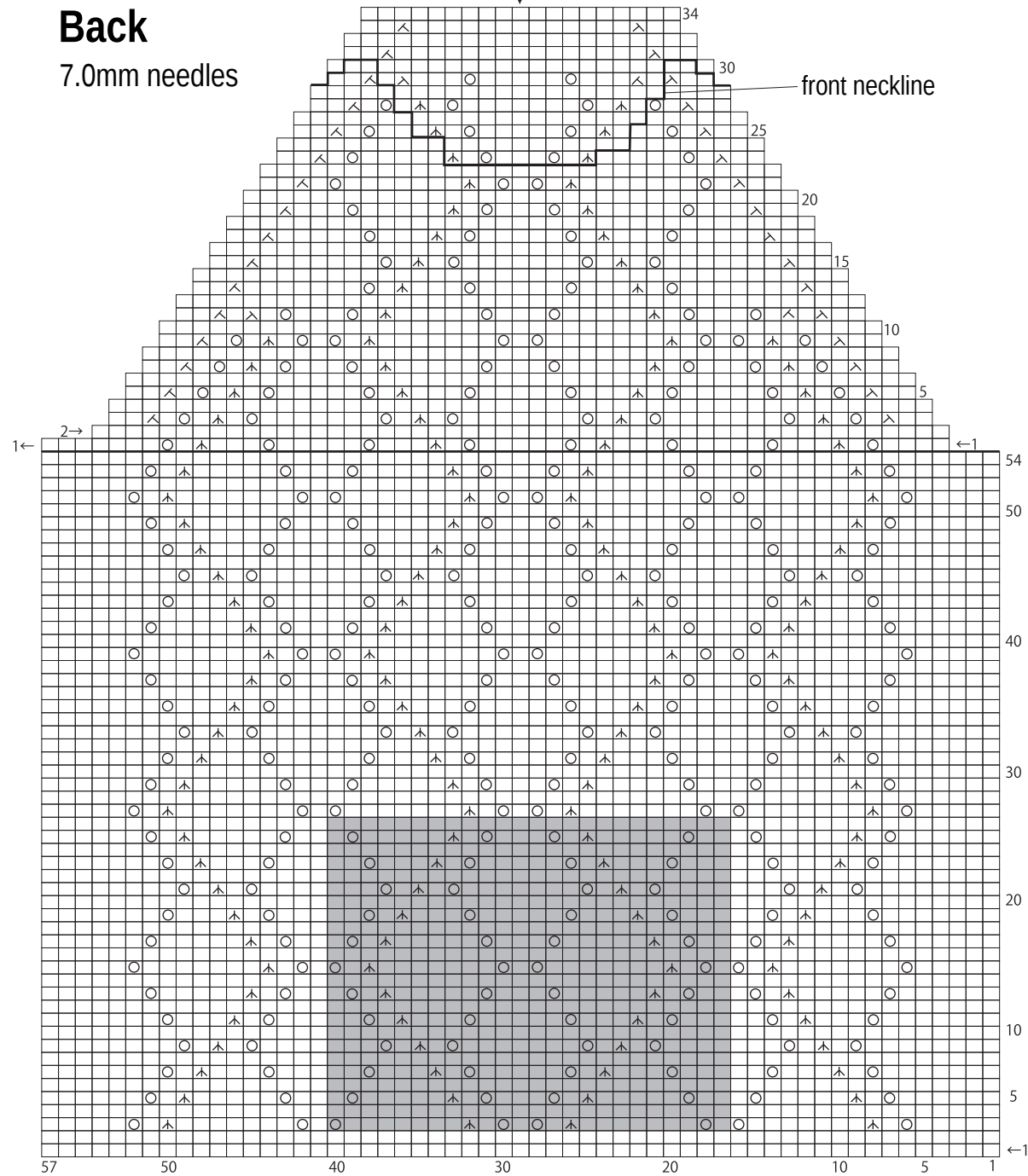
7.0mm needles

7.0mm needles

$\square = \square \text{ I } \text{knit}$

— front neckline

■ = 1 repeat
= 24 sts & 24 rows



Right sleeve

7.0mm needles

※Reverse shaping for left sleeve.

