

217aw-18 Bomber Jacket



Suggested yarn:

- Pierrot Yarns Fontaine [80% wool, 20% alpaca; 103 yds/94m per 1.41 oz./40g skein]; color #06 Smoke Green, 19 skeins [745g]

Tools/Notions:

- 6.3mm (approx. US 10.5) knitting needles or size necessary to achieve gauge
- open-end zipper (55cm/21.65" long)
- sewing thread & needle

Finished measurements:

- chest 107cm/42.13"
- cross back width 45cm/17.72"
- back length 64cm/25.20"
- sleeve length 59cm/23.23"

Gauge (10cm/4" square):

- pattern stitch: 11.5 sts and 27 rows

Gauge may vary according to individual knitting style. Change needle size if necessary to achieve gauge. Alternatively, rework pattern with your own gauge measurements.

Summary

✳️**Note:** Entire garment worked with 2 strands of yarn held together.

Body & sleeves: Cast on with long-tail cast-on method. Work in k1p1 ribbing, then continue in pattern stitch. For sleeves only, bind off all stitches. Place right front, left front, and back stitches on stitch holder until you begin seaming. Work left front as mirror image of right front.

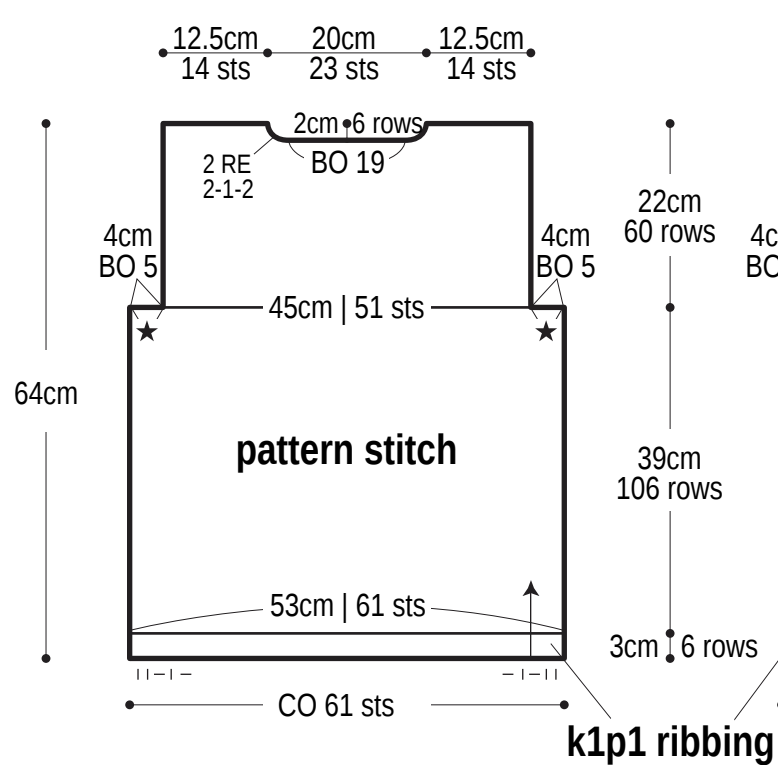
Finishing: Seam shoulders with slip stitch seam. Seam sleeves to body with slip stitch seam. Seam sections marked on finishing schematic with ★ using stitches-to-rows mattress stitch. Seam sides and sleeve undersides with mattress stitch (one continuous seam per side of body/sleeve). Pick up stitches around neckline; work collar in k1p1 ribbing. Bind off in pattern. Pick up stitches along front edges; work welt in k1p1 ribbing. Bind off in pattern. Sew zipper to front edges using half blindstitch.

Abbreviations:

BO = bind off CO = cast on k = knit p = purl PU = pick up RE = row(s) even RS = right side #-#-# = rows-stitches-times

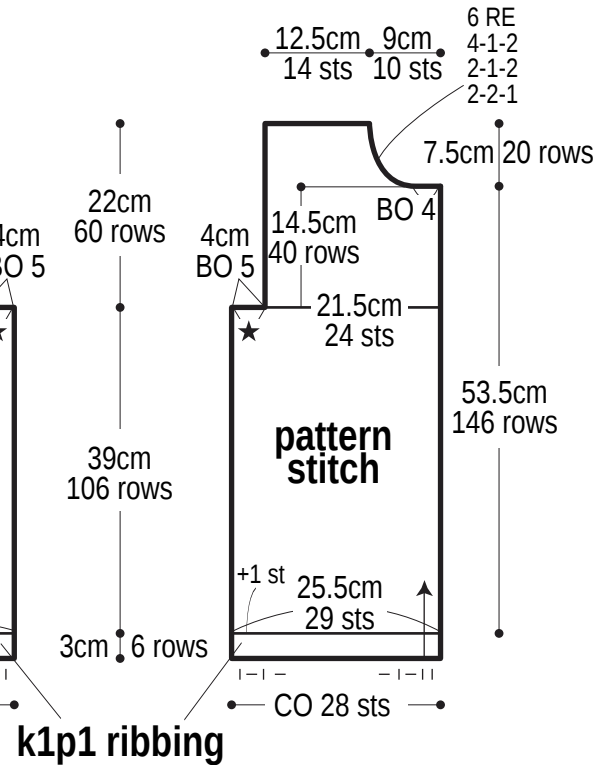
Back

6.3mm needles



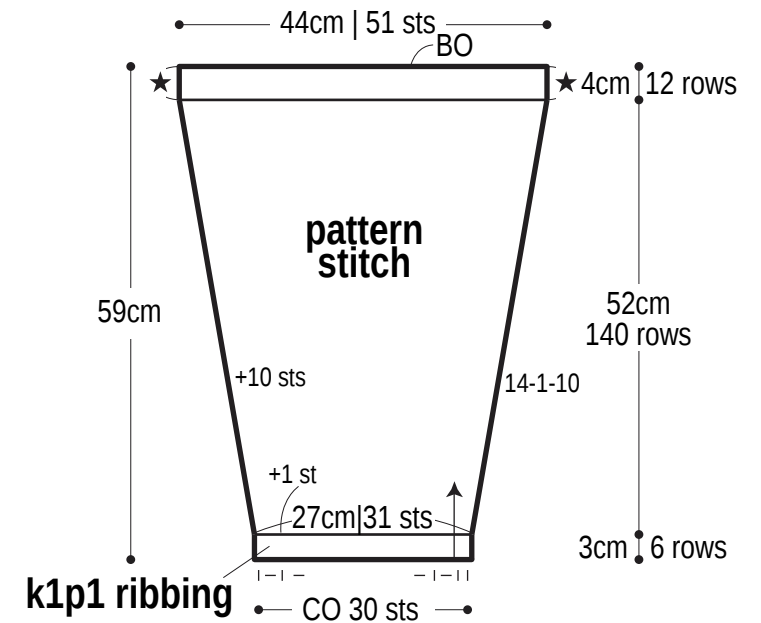
Right front

6.3mm needles



Sleeve

6.3mm needles

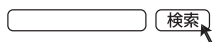


※Reverse shaping of right front for left front.

Use QR code on smartphone to view
a video tutorial about how to work the
brioche pattern stitch.

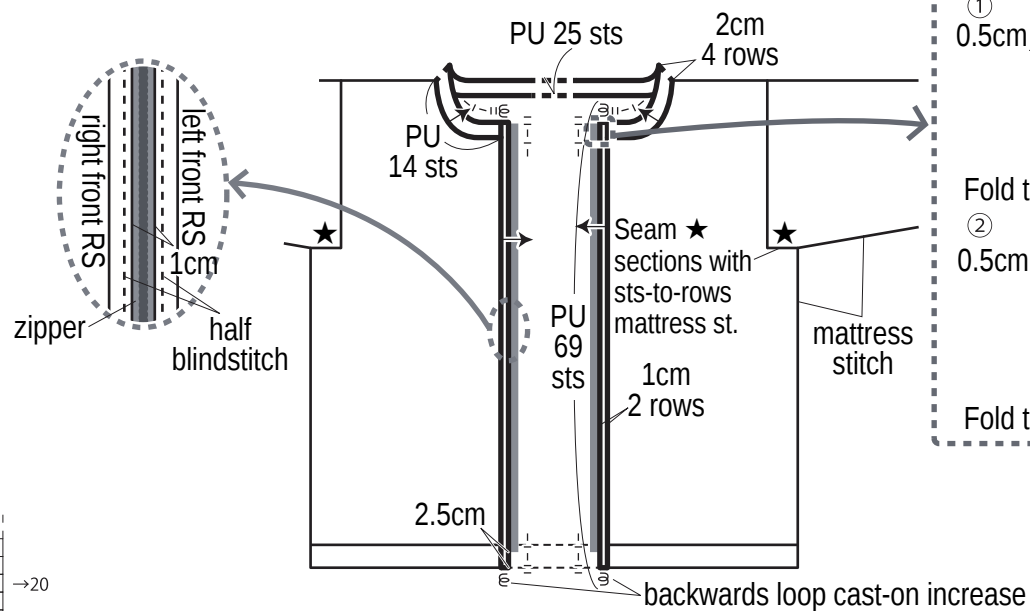


※To view on computer, search on the Pierrot
Yarns website or YouTube channel instead.

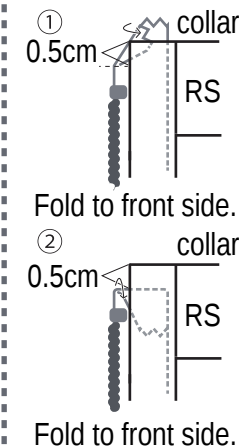


Finishing

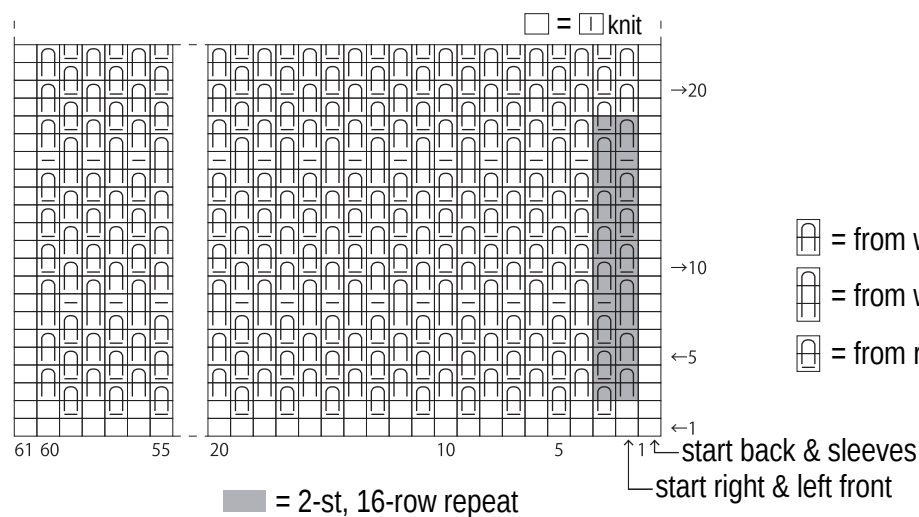
k1p1 ribbing
6.3mm needles



Enlargement for detail



Pattern stitch 6.3mm needles



- = from wrong side: YO, k1. On next row, work float and st together.
- = from wrong side: YO, k1. On next row, slip float and p st. On third row, k floats and st together.
- = from right side: YO, p1. On next row, work float and st together.