

217aw-16 Men's Hana Herringbone



Suggested yarn:

- Pierrot Yarns Hana Merino [100% merino wool; 104 yds/95m per 1.41 oz./40g skein]; color #10 Charcoal Gray, 14 skeins [530g]

Tools/Notions:

- 3.6mm (approx. US 5) and 4.2mm (approx. US 6) knitting needles or sizes necessary to achieve gauge
- cable needle

Finished measurements:

- chest 101cm/39.76"
- center back neck-to-cuff 79cm/31.10"
- back length 63cm/24.80"

Gauge (10cm/4" square):

- stockinette stitch: 21 sts and 29 rows
- pattern stitch: 29 sts and 29 rows

Gauge may vary according to individual knitting style. Change needle size if necessary to achieve gauge. Alternatively, rework pattern with your own gauge measurements.

Summary

Back: Cast on with long-tail cast-on method. Work in k1p1 ribbing, then continue in st st. Shape raglan seam by working fully fashioned decreases (1 stitch in from the edge).

Front: Cast on with long-tail cast-on method. Work in k1p1 ribbing, then continue in pattern st. Shape raglan seam by working fully fashioned decreases (1 stitch in from the edge).

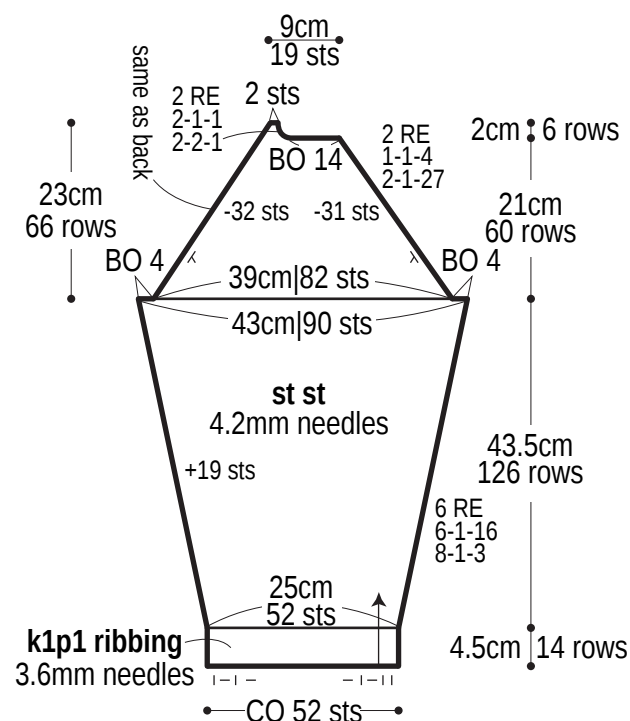
Sleeve (make 2): Cast on with long-tail cast-on method. Work in k1p1 ribbing, then continue in st st. Shape raglan seam by working fully fashioned decreases (1 stitch in from the edge).

Finishing: Seam raglan edges with mattress stitch. Seam underarm gusset with Kitchener stitch. Seam sleeve and side with one continuous mattress stitch seam (1 per side of garment). Pick up stitches around neckline; work collar in k1p1 ribbing in the round. Bind off in pattern.

Abbreviations:

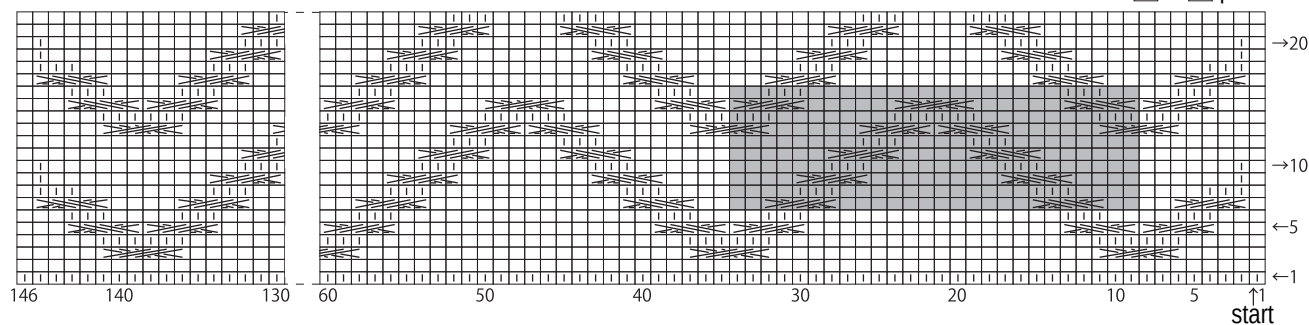
BO = bind off CO = cast on k = knit p = purl PU = pick up RE = row(s) even st st = stockinette stitch #-#-# = rows-stitches-times

Right sleeve



4.2mm needles

■ = 26-st, 10-row repeat

$$\square = \square_{\text{pur}}$$


(Slip 3 sts to cable needle & hold in back. k3, k3 from cable needle.)

 = C5F

(Slip 3 sts to cable needle & hold in front. p2, k3 from cable needle.)

 = C5B

(Slip 2 sts to cable needle & hold in back. k3, p2 from cable needle.)

Collar: k1p1 ribbing

3.6mm needles

