

217aw-09 Poncho



Suggested yarn:

- Pierrot Yarns Junmo Namibuto2/Pure Wool [100% wool; 79 yds/72m per 1.41 oz./40g skein]; color #209 Wine Red, 8 skeins [290g]

Tools/Notions:

- 3.6mm (approx. US 5), 3.9mm (approx. US 6), and 4.5mm (US 7) knitting needles or sizes necessary to achieve gauge

Finished measurements:

- back length 37cm/14.57"
- hem circumference 140cm/55.12"

Gauge (10cm/4" square):

- pattern stitch A: 24 sts and 27 rows
- k1p1 ribbing: 23 sts and 32 rows

Gauge may vary according to individual knitting style. Change needle size if necessary to achieve gauge. Alternatively, rework pattern with your own gauge measurements.

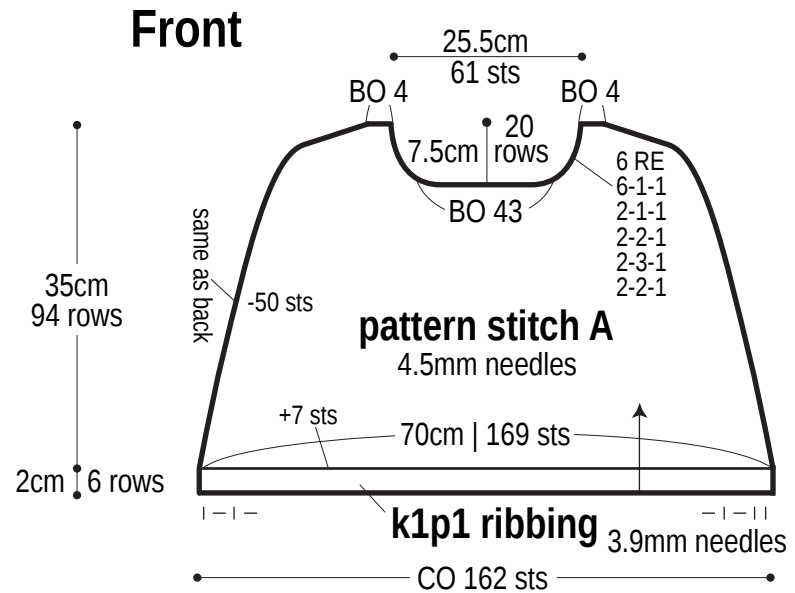
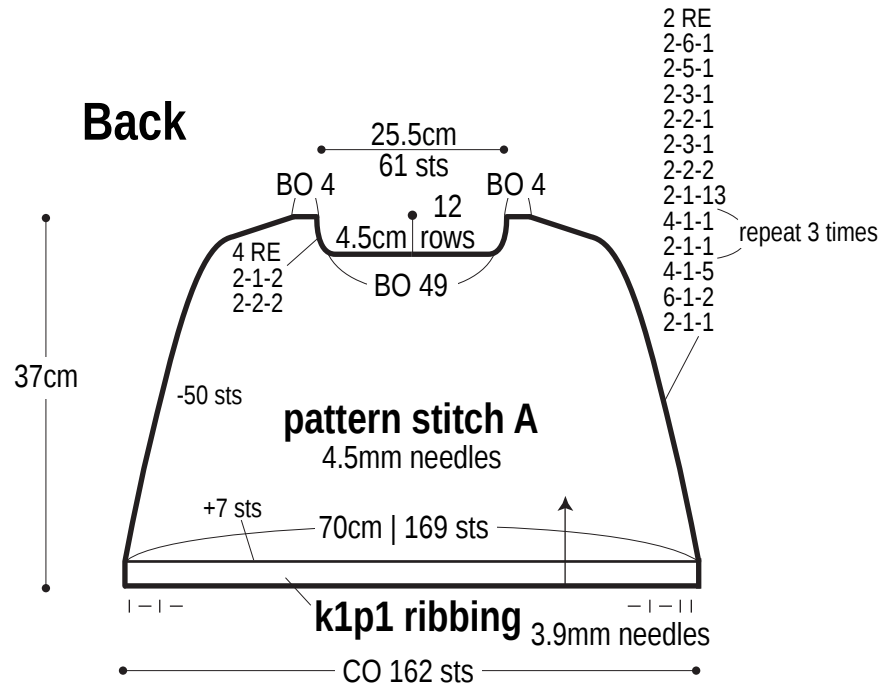
Summary

Body of poncho: Cast on with long-tail cast-on method. Work in k1p1 ribbing. Continue in pattern stitch A, shaping poncho by binding off stitches where indicated and by working fully fashioned decreases (1 stitch in from the edge) at edges; see schematics for details.

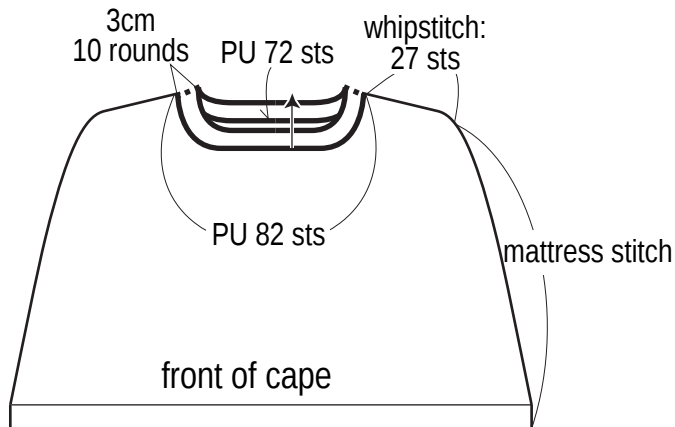
Finishing: Seam sides of cape with mattress stitch (sides below shoulder) and whipstitch (shoulder); see finishing schematic for details. Pick up stitches around neckline; work collar in k1p1 ribbing in the round. Bind off in pattern.

Abbreviations:

BO = bind off CO = cast on k = knit k3tog = knit 3 sts together p = purl PU = pick up RE = row(s) even sssk = slip, slip, slip, knit #-#-# = rows-sts-times

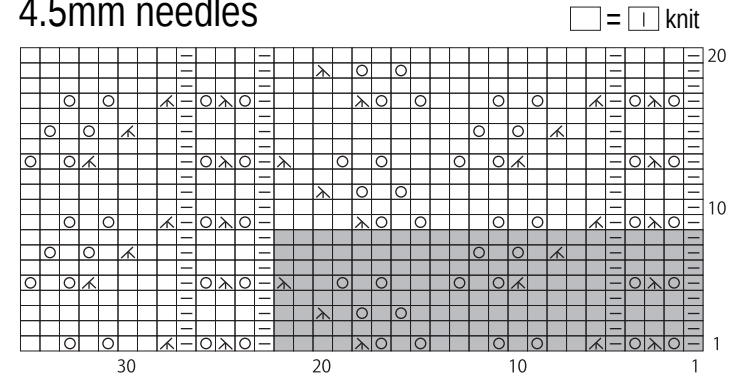


Finishing collar: k1p1 ribbing
3.9mm needles



- ☒ = k3tog
- ☒ = sssk
- = 1 repeat
= 22 sts & 8 rows

Pattern stitch A 4.5mm needles



Back of poncho

pattern stitch A, 4.5mm needles

