

# 217aw-05 Lowry Aran Sweater



## Suggested yarn:

- Pierrot Yarns Lowry [88% merino wool, 12% cashmere; 65 yds/59m per 1.41 oz./40g skein]; color #01 ivory, 12 skeins [470g]

## Tools/Notions:

- 5.1mm (approx. US 8) and 5.7mm (approx. US 9) knitting needles or sizes necessary to achieve gauge
- cable needle

## Finished measurements:

- bust 94cm/37.01"
- center back neck-to-cuff 71cm/27.95"
- back length 55.5cm/21.85"

## Gauge (10cm/4" square):

- stockinette stitch: 15.5 sts and 21 rows
- pattern stitch: 18 sts and 21 rows
- k2p2 ribbing: 18 sts and 24 rows

*Gauge may vary according to individual knitting style. Change needle size if necessary to achieve gauge. Alternatively, rework pattern with your own gauge measurements.*

## Summary

**Body & sleeves:** Cast on with long-tail cast-on method. Work in k2p2 ribbing, then continue in pattern stitch and stockinette stitch. Shape raglan edges by binding off stitches where indicated and by working fully fashioned decreases (worked 3 stitches in from the edge).

**Finishing:** Seam raglan edges with mattress stitch. Seam underarm gussets with stitches-to-rows mattress stitch. Seam sides and sleeve undersides with mattress stitch (one continuous seam per side of body). Pick up stitches around neckline; work collar in k2p2 ribbing. Bind off in pattern.

## Abbreviations:

BO = bind off      CO = cast on      k = knit      p = purl      PU = pick up      RE = row(s) even      st st = stockinette stitch      #-#-# = rows-stitches-times

# Back

The diagram illustrates the back of a garment with the following details:

- Yoke:** A trapezoidal shape at the top. The top width is 16cm (28 sts). The bottom width is 72 sts. The height is 55.5cm. The yoke is worked in BO 28 (Back Open 28) and BO 5 (Back Open 5) stitches. The yoke is divided into four sections: 1 RE (Right Edge), 1-1-2, 2-1-19, and 3-1-1.
- Body:** A rectangular section below the yoke. The width is 72 sts. The height is 55.5cm. The body is worked in **pattern stitch** using 5.7mm needles.
- Hem:** A rectangular section at the bottom. The width is 72 sts. The height is 55.5cm. The hem is worked in **k2p2 rib** using 5.1mm needles. The hem is divided into two sections: 47cm/82 sts and 38cm/68 sts.
- Stitching:** The diagram shows various stitching techniques, including BO 28, BO 5, and k2p2 rib. It also indicates the placement of stars and arrows.

**Front**

Measurements and counts for the front view:

- Top width: 17cm (30 sts)
- Shoulder width: 21cm (44 rows), 19cm (40 rows)
- Neckline depth: 5.5cm (12 rows)
- Collar width: 12cm (12 rows)
- Body width: 72 sts
- Body length: 29.5cm (62 rows)
- Hem width: 5cm (12 rows)
- CO: 86 sts

Stitch patterns and counts:

- 1 RE (1-1-1, 2-1-4, 2-2-1)
- 1 RE (1-1-4, 2-1-16, 3-1-1)
- BO 5
- BO 12
- BO 5
- st st
- pattern stitch (5.7mm needles)
- k2p2 rib (5.1mm needles)
- ☆ = 4.5cm (7 sts)

**Right sleeve**

7cm  
13 sts

2 RE  
2-5-1  
BO 6

2 sts

same as back

21cm  
44 rows

same as front

22 sts -21 sts

BO 5

25.5cm | 46 sts  
38.5cm | 66 sts

6.5cm  
10 sts

st st

pattern stitch

5.7mm needles

+11 sts

-2 sts

24.5cm  
44 sts

k2p2 rib

5.1mm needles

CO 46 sts

2cm  
4 rows

19cm  
40 rows

37cm  
78 rows

5cm  
12 rows

7 RE  
6-1-8  
8-1-2  
7-1-1

※Reverse shaping for left sleeve.

**finishing**

PU 13 sts

PU 26 sts

PU 13 sts

3.5cm  
8 rounds

k2p2 rib  
5.1mm needles

gusset: stitches-to-rows  
mattress stitch

PU 36 sts

mattress stitch

underarm & side:  
mattress stitch



✳️To view on computer, search on the Pierrot Yarns website or YouTube channel instead.

検索

# Back

5.7mm needles

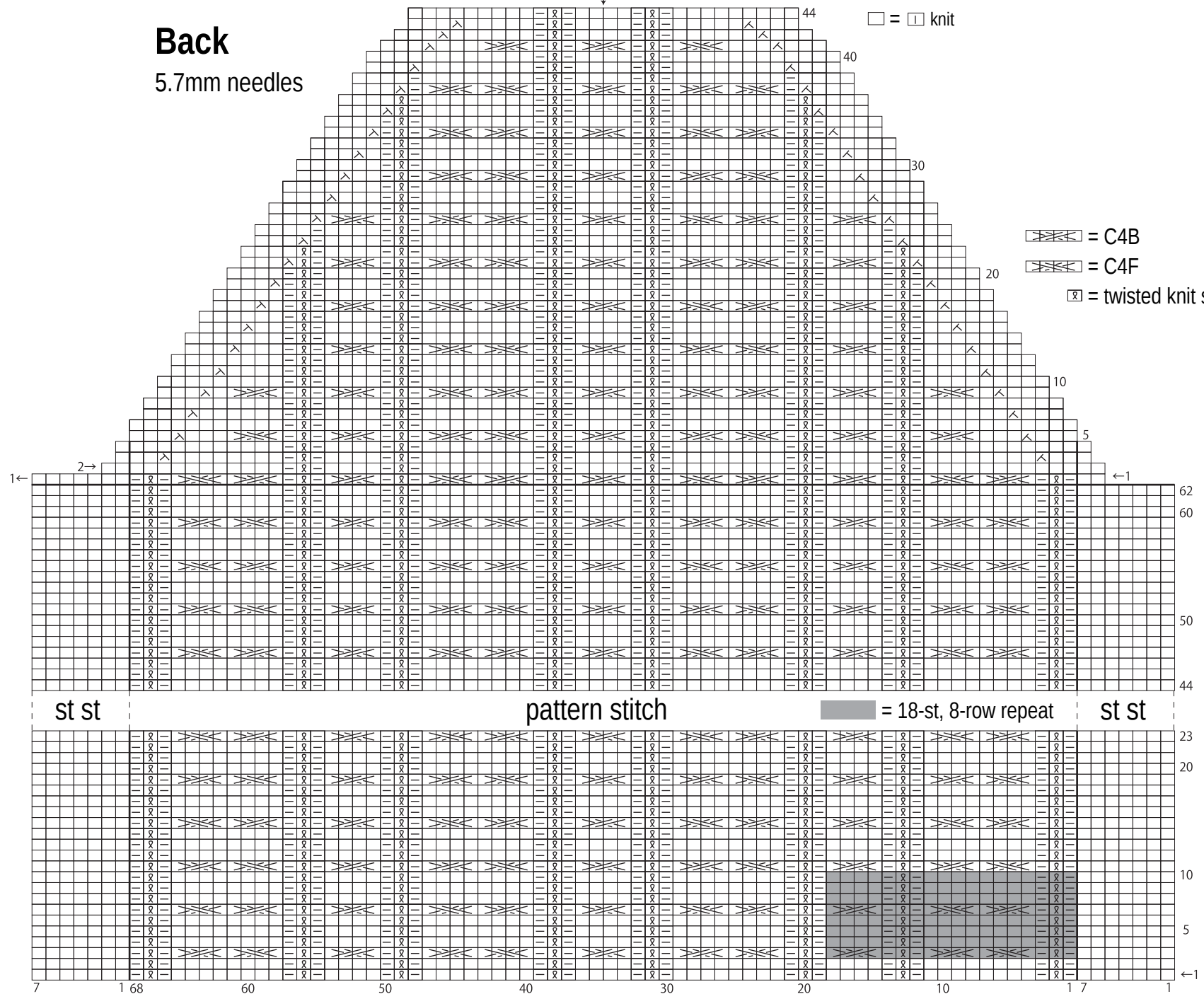
center  
↓

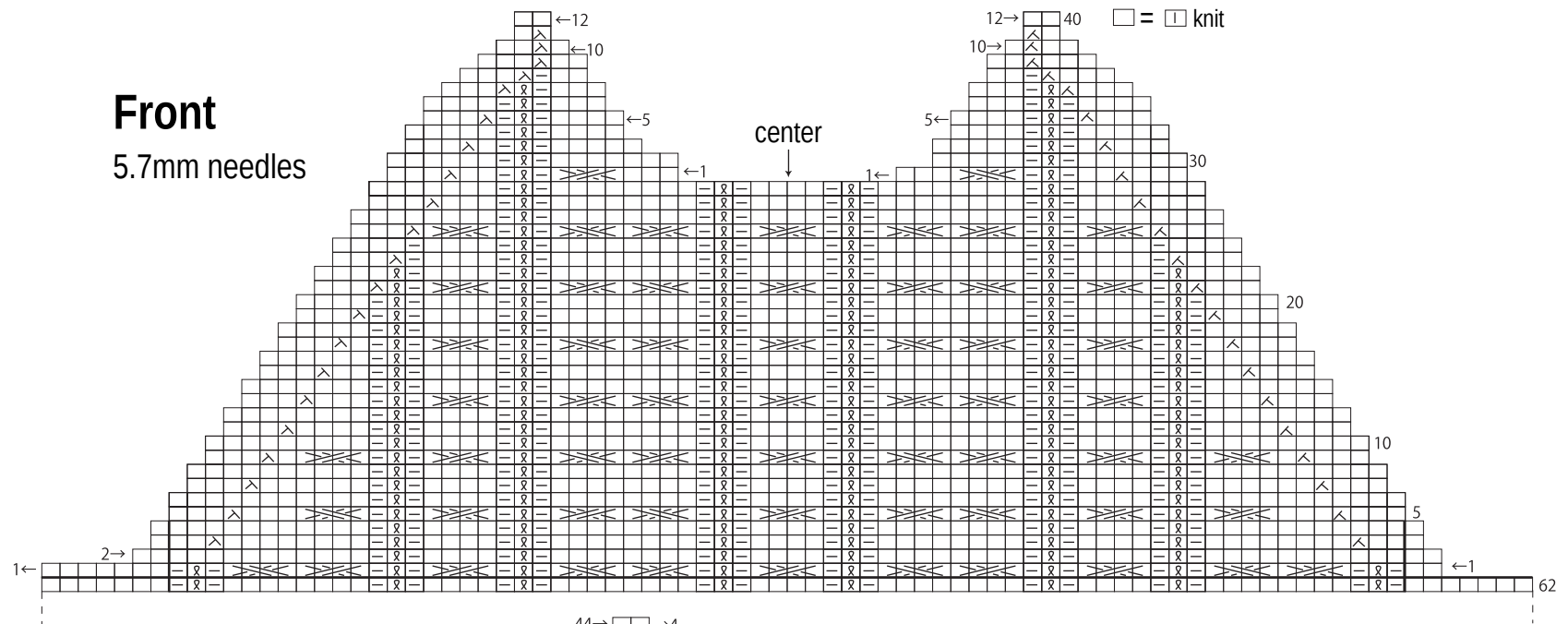
□ = □ knit

⌘ = C4B

⌘ = C4F

⌘ = twisted knit stitch





**Right sleeve**  
5.7mm needles

※Reverse shaping for left sleeve.

