

1230margaret Lowry Convertible Shrug



Suggested yarn:

- Pierrot Yarns Lowry [88% merino wool, 12% cashmere; 65 yds/59m per 1.41 oz./40g skein];
 - color #03 navy, 10 skeins [380g]

Tools/Notions:

- 5.1mm (approx. US 8) and 5.7mm (approx. US 9) knitting needles or sizes necessary to achieve gauge
- 5.0mm (US H) crochet hook or size necessary to achieve gauge

Finished measurements:

- width 45cm/17.72"
- length 150cm/59.06"

Gauge (10cm/4" square):

- English rib: 11 sts and 15 rows

Gauge may vary according to individual knitting style. Change needle size if necessary to achieve gauge. Alternatively, rework pattern with your own gauge measurements.

Summary

Body: Cast on with crochet provisional cast-on method. Work in English rib. Place all stitches on stitch holder(s).

Finishing: Pick up stitches from live stitches on stitch holder; work cuff in k1p1 ribbing. Bind off in pattern. Remove provisional cast-on edge (leaving live stitches on needle); work in k1p1 ribbing. Bind off in pattern. Seam sides up until markers using mattress stitch. Crochet 2 cords and thread one through each cuff.

Abbreviations:

CO = cast on

k = knit

OH = on hold (that is, place on stitch holder)

p = purl

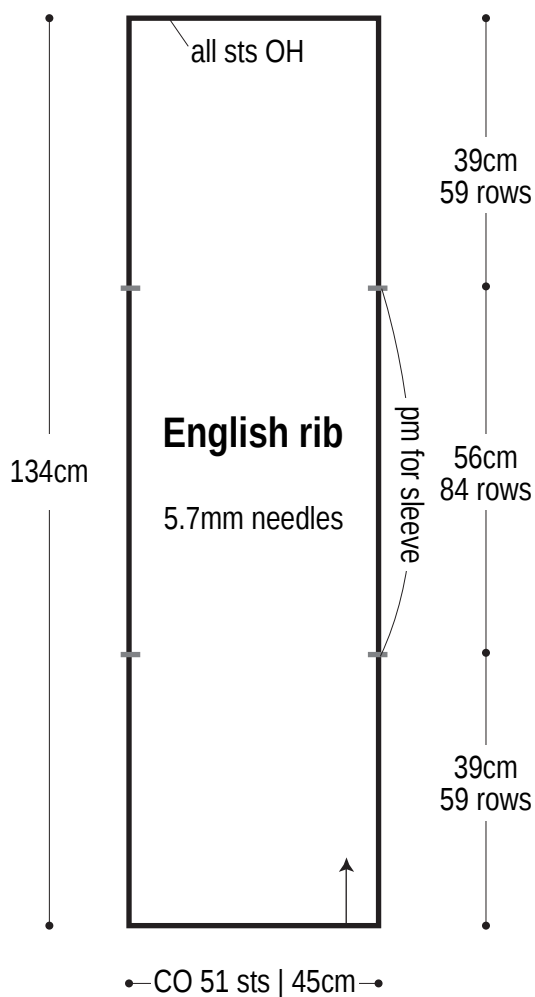
pm = place marker

PU = pick up

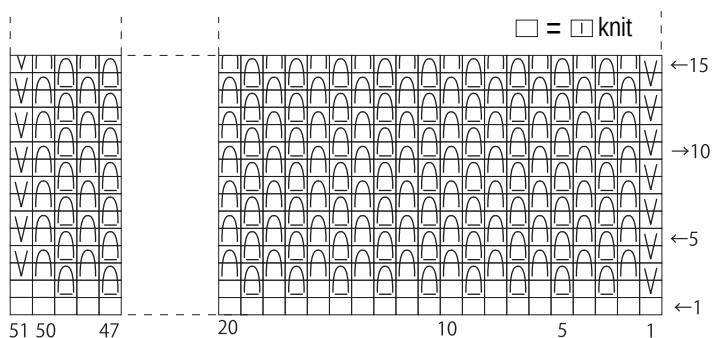
RS = right side

WS = wrong side

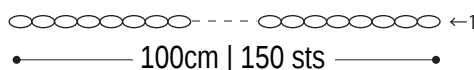
Body of shrug



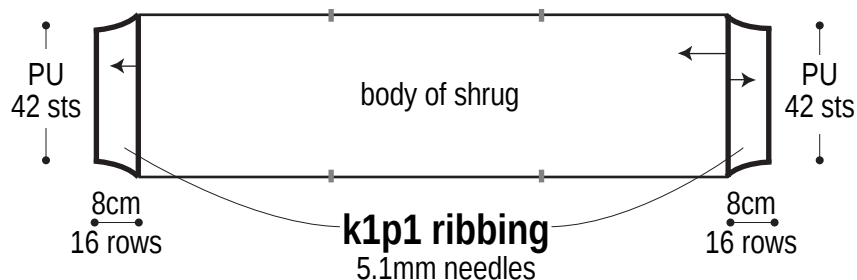
English rib 5.7mm needles



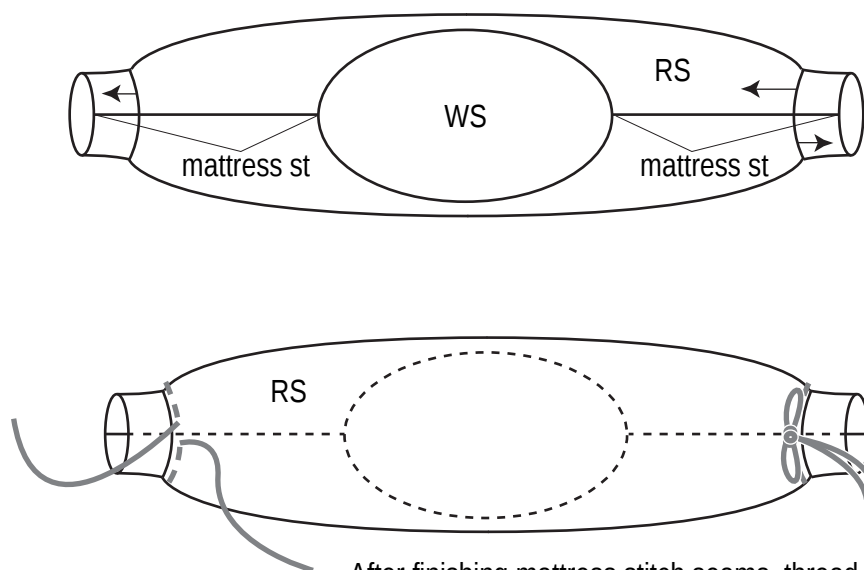
Cord (make 2) 5.0mm hook



Cuffs

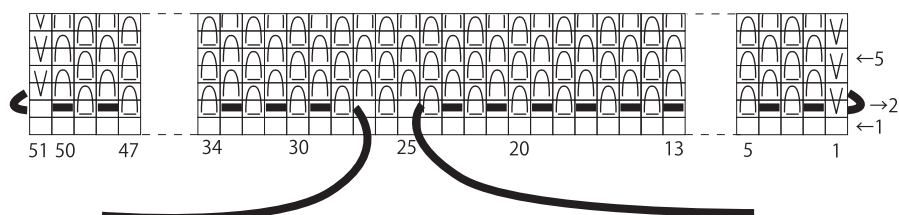


Finishing



After finishing mattress stitch seams, thread cord through second row of English rib (at each end).

How to thread cords



Use QR code on smartphone to view a video tutorial on how to work English rib.



※To view on computer, search on the Pierrot Yarns website or YouTube channel instead.