

# tricot10-7 Princess Lily Armwarmers



## Suggested yarn:

- Keito-Zakka Stores Princess Lily [60% wool, 40% merino wool; 175 yds/160m per 1.41 oz./40g skein];
  - color #01 Cream White, 1 skein [20g]
  - color #08 Elegant Mauve, 1 skein [5g]
  - color #10 Rainy Blue, 1 skein [6.5g]

## Tools/Notions:

- 2.7mm (approx. US 2) & 3.3mm (approx. US 4) knitting needles or sizes necessary to achieve gauge

## Finished measurements:

- palm circumference 19.5cm/7.68"
- length 22cm/8.66"

## Gauge (10cm/4" square):

- pattern stitch (stranded): 28.5 sts and 30 rows

*Gauge may vary according to individual knitting style. Change needle size if necessary to achieve gauge. Alternatively, rework pattern with your own gauge measurements.*

## Summary

**Armwarmer (make 2):** Cast on with long-tail cast-on method. Work k1p1 ribbing, then work 36 rows in stranded pattern stitch. On next row, work thumb stitches on waste yarn. Work 23 more rows after thumb row (24 rows total including thumb row). Work k1p1 ribbing, then bind off in pattern. \*Note: when working second warmer, reverse thumb location.

**Thumb:** Pick up live stitches from waste yarn; discard waste yarn. Work st st in the round, then k1p1 ribbing in the round. Bind off in pattern.

**Finishing:** With wrong sides facing each other, seam sides with mattress stitch, forming a tube.

## Abbreviations:

BO = bind off  
CO = cast on  
k = knit  
p = purl  
PU = pick up  
st st = stockinette stitch

✱Reverse thumb location for left arm.

## k1p1 ribbing

Diagram illustrating the dimensions and row counts for a rectangular scarf pattern:

- Overall Dimensions:** 22cm (width) x 20cm (length).
- Pattern Stitch:** 3.3mm needles, 19.5cm (width) x 56 sts (length).
- Thumbhole:** 2.5cm (width) x 7 sts (length).
- Pattern Stitch:** 1 st (width) x 1 st (length).
- Row Counts:**
  - 1cm: 4 rows
  - 8cm: 24 rows
  - 12cm: 36 rows
  - 1cm: 4 rows
- Bottom Ribbing:** k1p1 ribbing, 2.7mm needles, color #01 cream white.
- CO:** 56 sts.

Diagram of a cylindrical container (e.g., a beaker or flask) showing the height and diameter. The height is labeled as 22cm and the diameter is labeled as 19.5cm. A vertical line indicates the center of the cylinder, and a curved line indicates the circumference. An arrow points to the seam, which is labeled "mattress stitch".

color #01 cream white

**k1p1 ribbing**  
2.7mm needles  
BO 16 sts  
1cm 4 rows  
+1 st  
2.5cm 8 rows  
3.5cm  
**stockinette stitch**  
3.3mm needles  
PU 15 sts

# Pattern stitch (stranded)

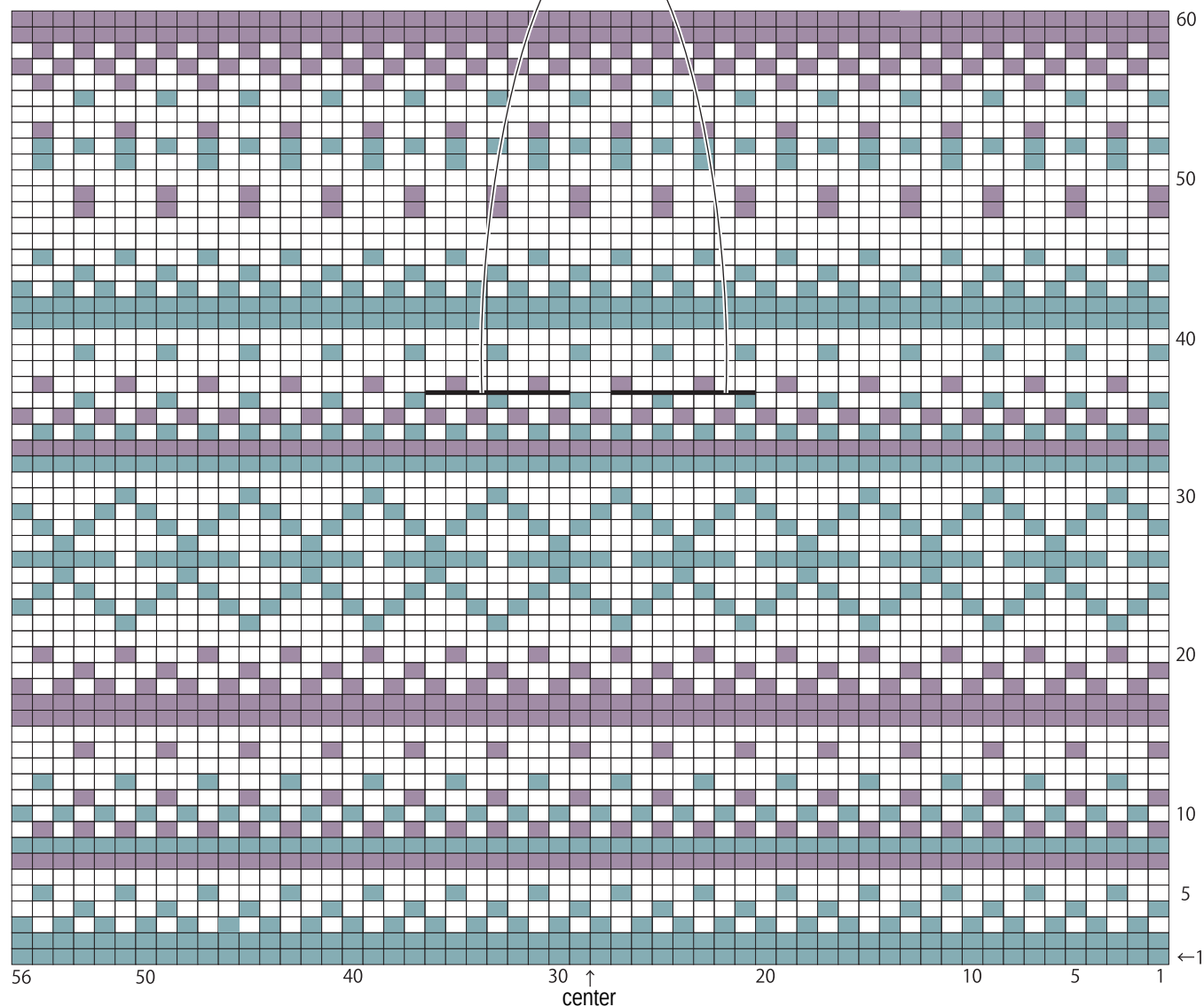
3.3mm needles

thumbhole placement  
(work these sts using waste yarn)

right

left

□ = □ knit



- = color #01 cream white
- = color #08 elegant mauve
- = color #10 rainy blue