

216w-07 Geometric Pattern Sweater



Suggested yarn:

- Pierrot Yarns Soft Merino [100% merino wool; 104 yds/95m per 1.41 oz./40g skein];
 - color #8 Wine Red, 2 skeins [50g]
 - color #10 Navy, 1 skein [30g]
 - color #11 Gray, 1 skein [5g]
 - color #18 Mustard, 1 skein [20g]
- Pierrot Yarns Nuit [80% merino wool, 20% nylon; 92 yds/84m per 1.41 oz./40g skein]; color #02 sable, 9 skeins [360g]

Tools/Notions:

- 3.0mm (US 3), 3.6mm (approx. US 5), and 4.2mm (approx. US 6) knitting needles or size necessary to achieve gauge

Finished measurements:

- bust 97cm/38.19"
- center back neck-to-cuff 76cm/29.92"
- back length 60cm/23.62"

Gauge (10cm/4" square):

- stockinette stitch: 19 sts and 27 rows
- stranded pattern stitch: 19 sts and 21 rows
- k2p2 ribbing: 26 sts and 30 rows

Gauge may vary according to individual knitting style. Change needle size if necessary to achieve gauge. Alternatively, rework pattern with your own gauge measurements.

Summary

Body: Cast on with long-tail cast-on method. Work in (horizontally) striped k2p2 ribbing, then continue in pattern stitch.

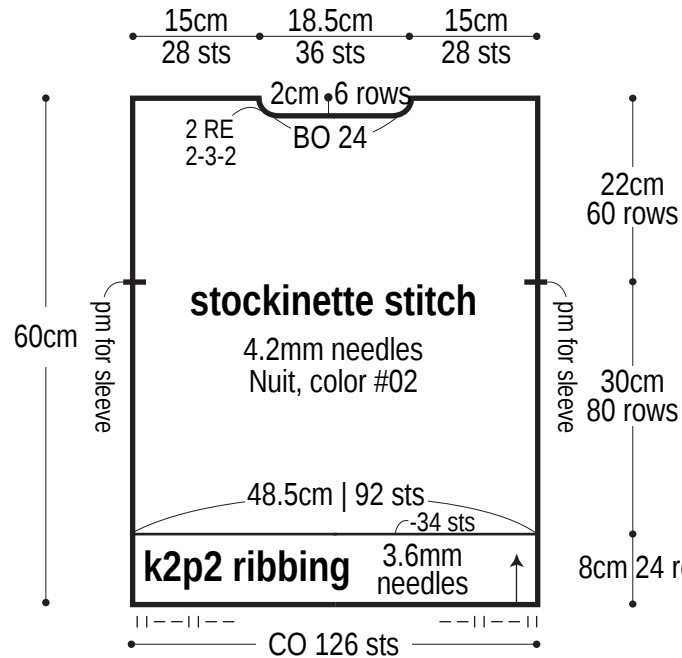
Sleeve (make 2): Cast on with long-tail cast-on method. Work in (horizontally) striped k2p2 ribbing, then continue in stranded pattern stitch. Refer to chart for color key. Bind off all stitches.

Finishing: Seam shoulders with crochet slip stitch seam. Pick up stitches around neckline; work collar in striped k2p2 ribbing in the round. Bind off in pattern. Seam sleeves to body with crochet slip stitch seam. Seam sides and sleeve undersides with mattress stitch (one continuous seam per side of body).

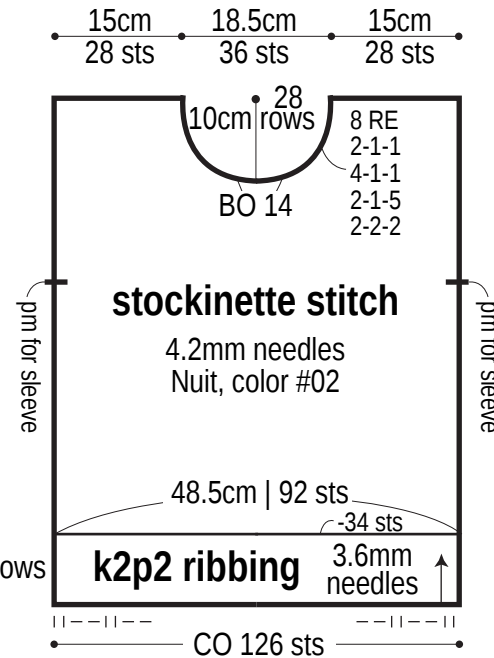
Abbreviations:

BO = bind off CO = cast on k = knit p = purl pm = place marker PU = pick up RE = row(s) even #-#-# = rows-stitches-times

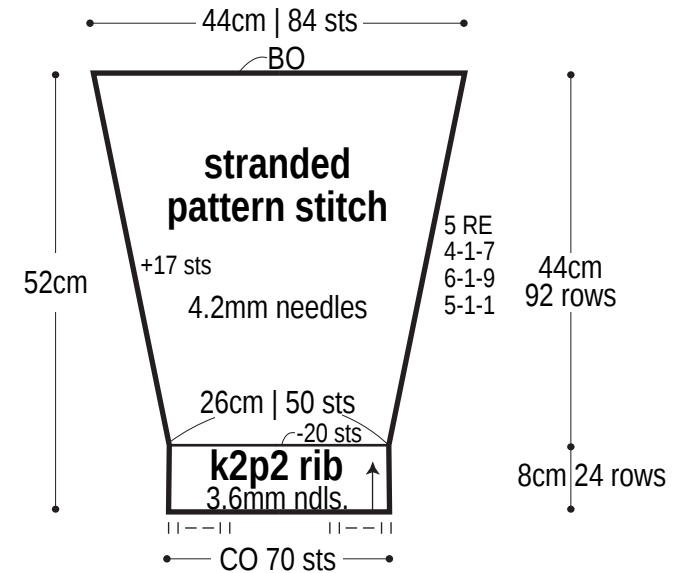
Back



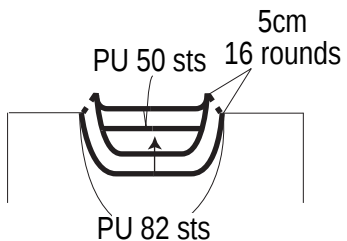
Front



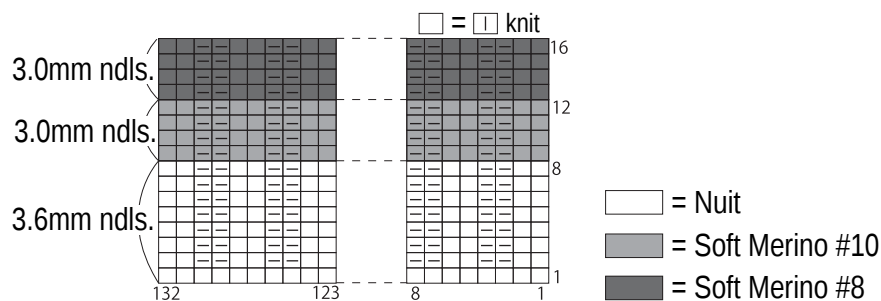
Sleeve



Collar: striped k2p2 ribbing 3.6mm needles

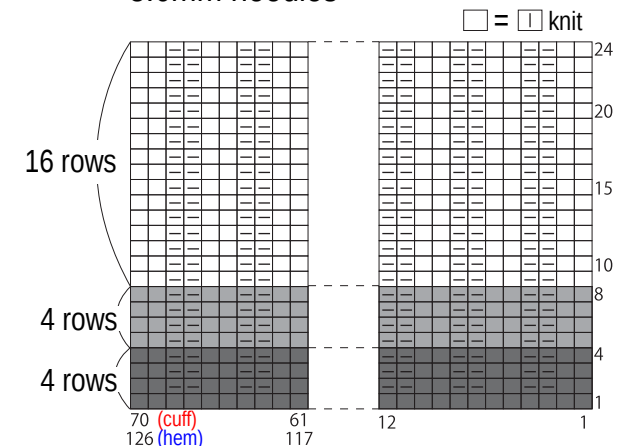


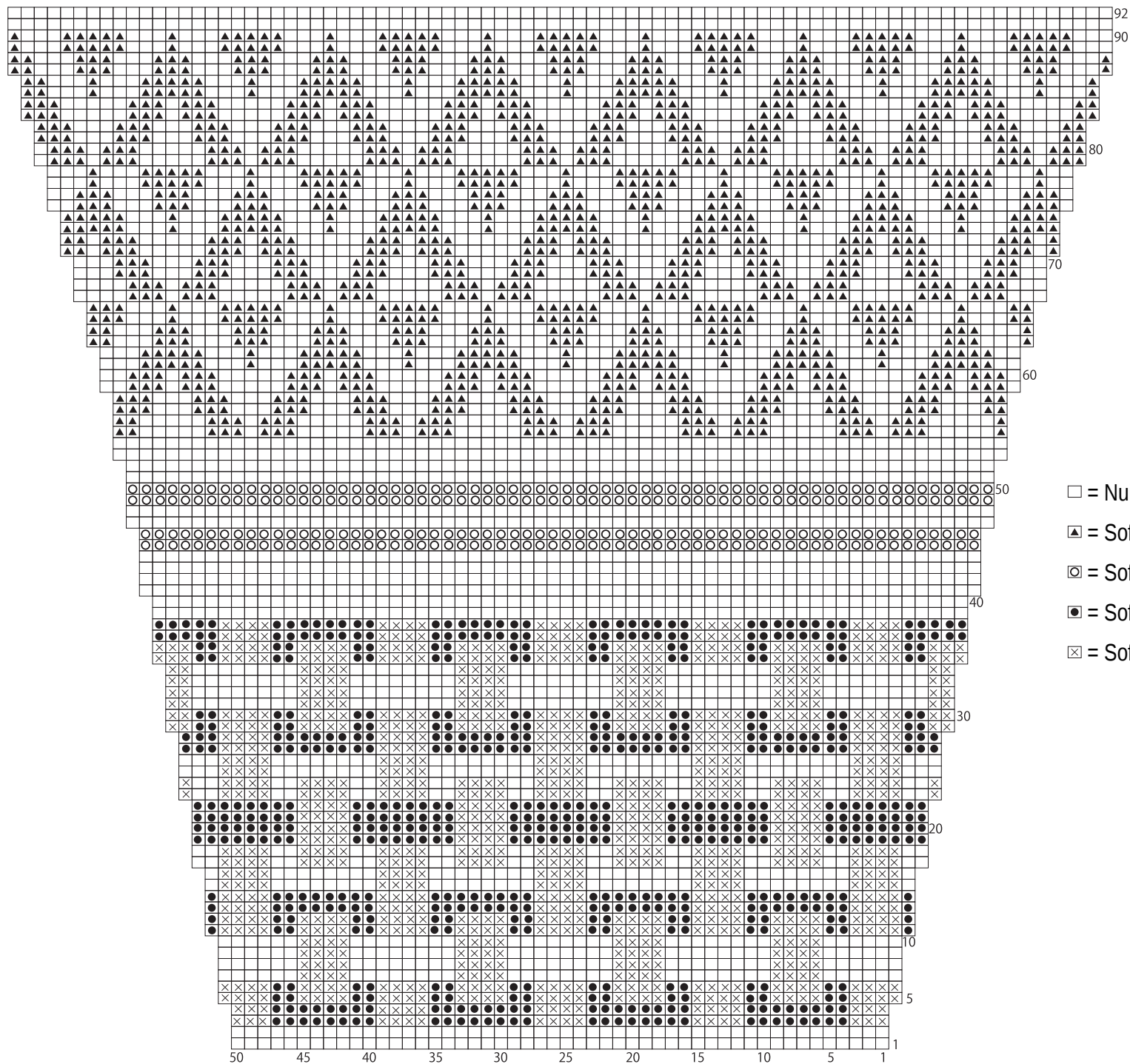
Collar chart



Hem & cuff welt

3.6mm needles





Sleeve

4.2mm needles

□ = □ knit

□ = Nuit, color #02

▲ = Soft Merino, color #8 wine red

○ = Soft Merino, color #11 gray

● = Soft Merino, color #10 navy

⊗ = Soft Merino, color #18 mustard