

216w-06 Whips Raglan



Suggested yarn:

- Pierrot Yarns Whips [58% acrylic, 30% nylon, 12% wool; 175 yds/160m per 1.41 oz./40g skein];
 - color #05 Maple Cookie, 3 skeins [100g]
 - color #08 Black Beans, 6 skeins [220g]

Tools/Notions:

- 5.7mm (approx. US 9) and 6.3mm (approx. US 10.5) knitting needles or sizes necessary to achieve gauge
- cable needle

Finished measurements:

- bust 92cm/36.22"
- center back neck-to-cuff 71cm/27.95"
- back length 53.5cm/21.06"

Gauge (10cm/4" square):

- pattern stitch: 14.5 sts and 19 rows
- seed stitch: 14 sts and 22 rows

Gauge may vary according to individual knitting style. Change needle size if necessary to achieve gauge. Alternatively, rework pattern with your own gauge measurements.

Summary

✿**Note:** Entire garment worked with 2 strands of yarn held together.

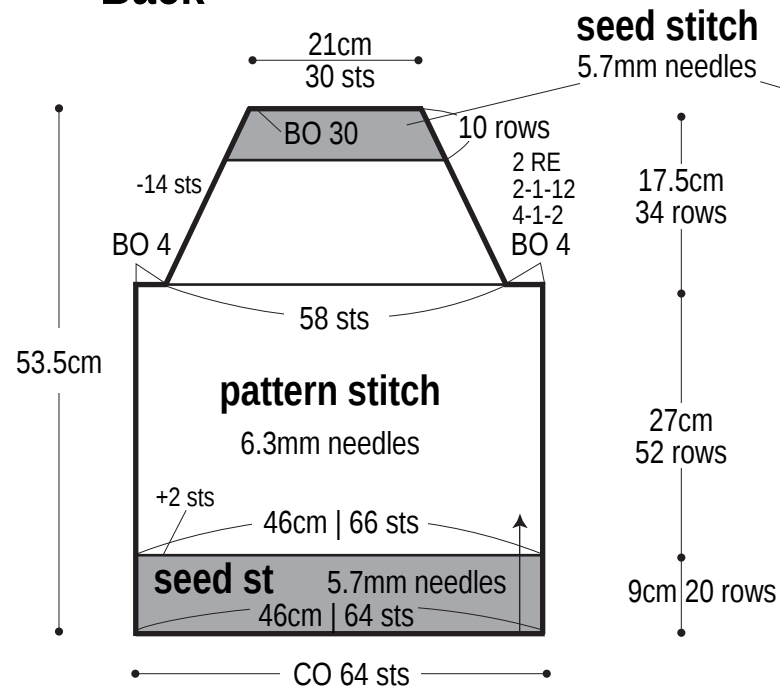
Body & sleeves: Cast on with long-tail cast-on method. Work in seed stitch and pattern stitch. Shape raglan edges by binding off stitches where indicated and by working fully fashioned decreases (1 st in from the edge) as indicated. Shape sides of sleeves using lifted increases.

Finishing: Seam raglan edges using mattress stitch. Seam gussets with stitches-to-rows mattress stitch. Seam sides and sleeve undersides with mattress stitch (one continuous seam per side of garment).

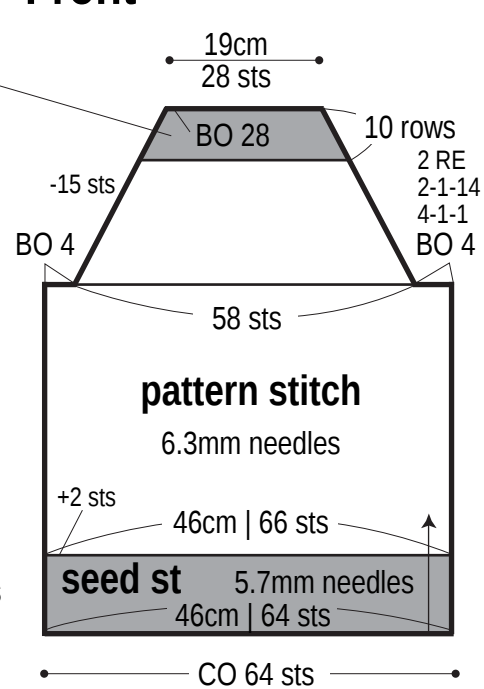
Abbreviations:

BO = bind off CO = cast on RE = row(s) even #-#-# = rows-stitches-times

Back

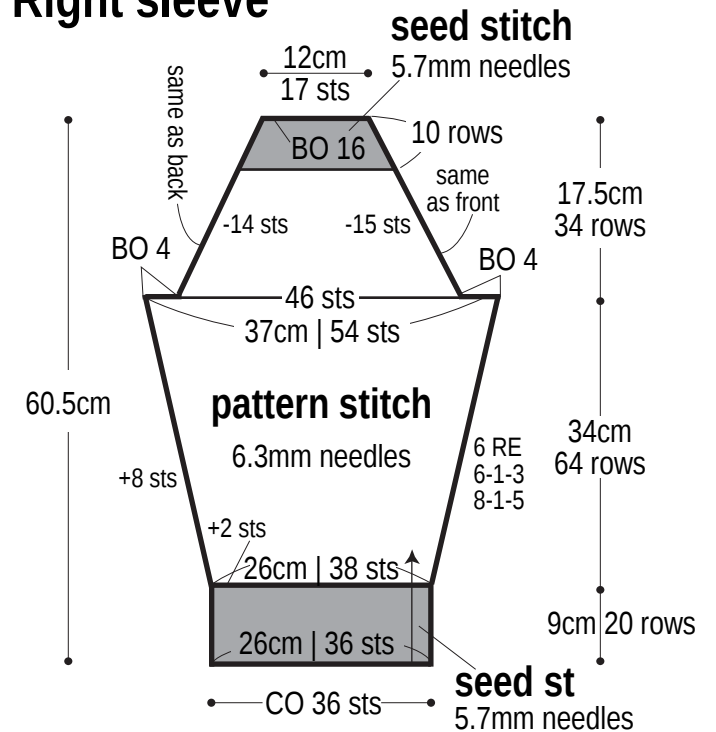


Front



Right sleeve

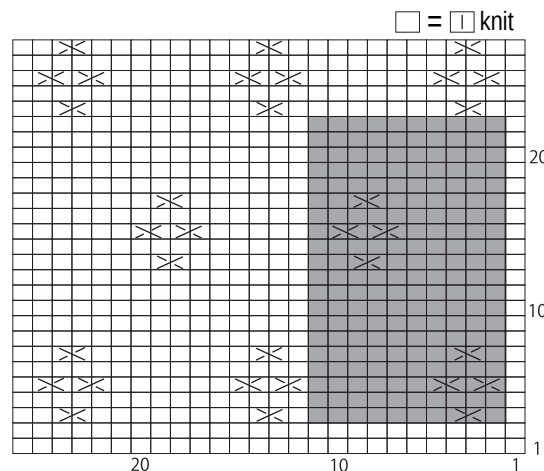
※Reverse shaping for left sleeve.



■ = seed stitch, color #05

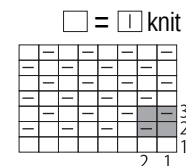
※Elsewhere, use pattern stitch & color #08.

Pattern stitch 6.3mm needles



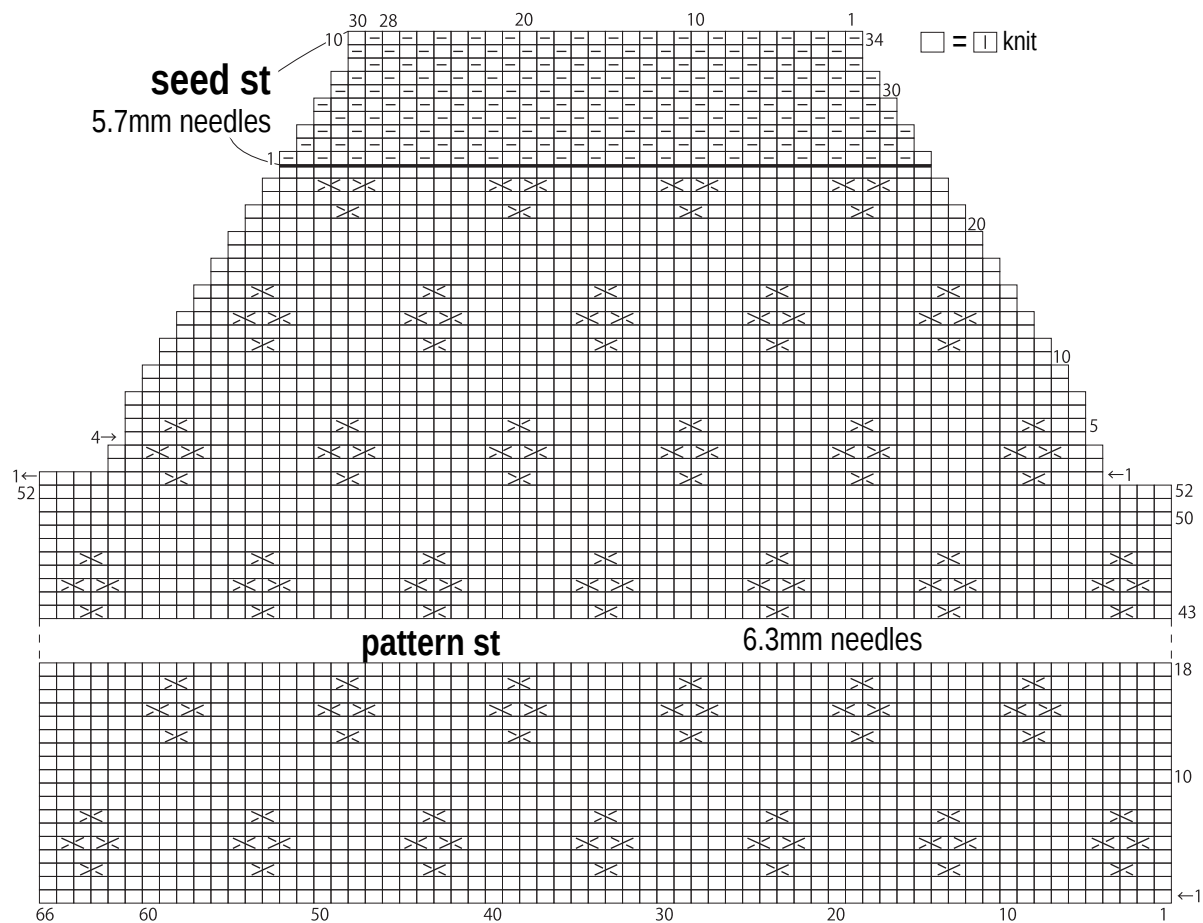
■ = 1 repeat
= 10 sts & 20 rows

Seed stitch 5.7mm needles



■ = 1 repeat = 2 sts & 2 rows

Back



Front

