

216w-05 Striped Cardigan



Suggested yarn:

- Pierrot Yarns Fine Merino [100% merino wool; 103 yds/94m per 1.06 oz./30g skein];
 - color #201 Off-White, 5 skeins [150g]
 - color #230 Slate Gray, 7 skeins [210g]

Tools/Notions:

- 3.6mm (approx. US 5) and 3.9mm (approx. US 6) knitting needles or sizes necessary to achieve gauge
- 9 buttons (12mm/0.47")

Finished measurements:

- bust 94cm/37.01"
- cross back width 35cm/13.78"
- back length 55.5cm/21.85"
- sleeve length 54cm/21.26"

Gauge (10cm/4" square):

- striped stockinette stitch: 22 sts and 30 rows
- seed stitch: 25 sts and 42 rows

Gauge may vary according to individual knitting style. Change needle size if necessary to achieve gauge. Alternatively, rework pattern with your own gauge measurements.

Summary

Body & sleeves: Cast on with long-tail cast-on method. Work in seed stitch and then in striped st st. Reverse shaping of right front for left front.

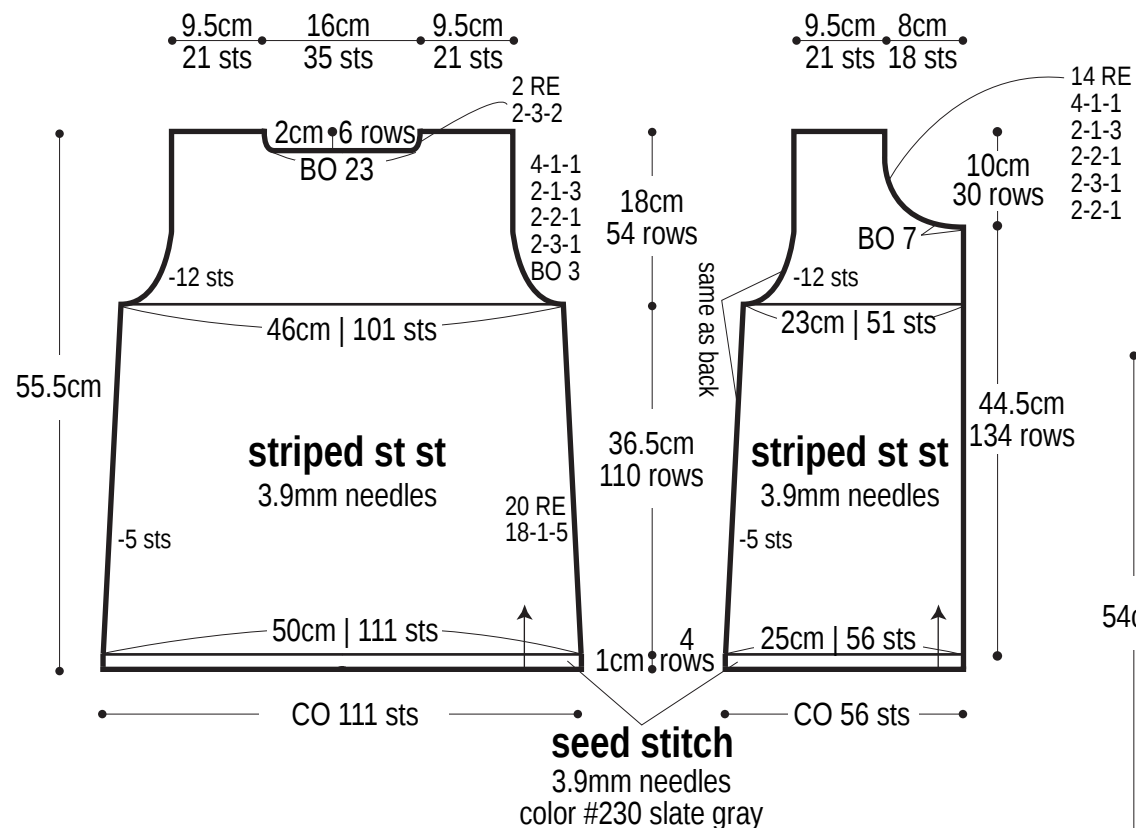
Pockets (make 2): Cast on with long-tail cast-on method. Work in st st and seed stitch. Bind off.

Finishing: Seam shoulders with crochet slip stitch seam. Seam sides and sleeve undersides with mattress stitch. Pick up stitches around neckline for collar; work in seed stitch. Bind off. Pick up stitches along front edges; work buttonband in seed seed (with buttonholes in right front band only). Bind off as for collar. Seam sleeves to body with crochet slip stitch seam. Seam pockets to right front and left front, respectively.

Abbreviations:

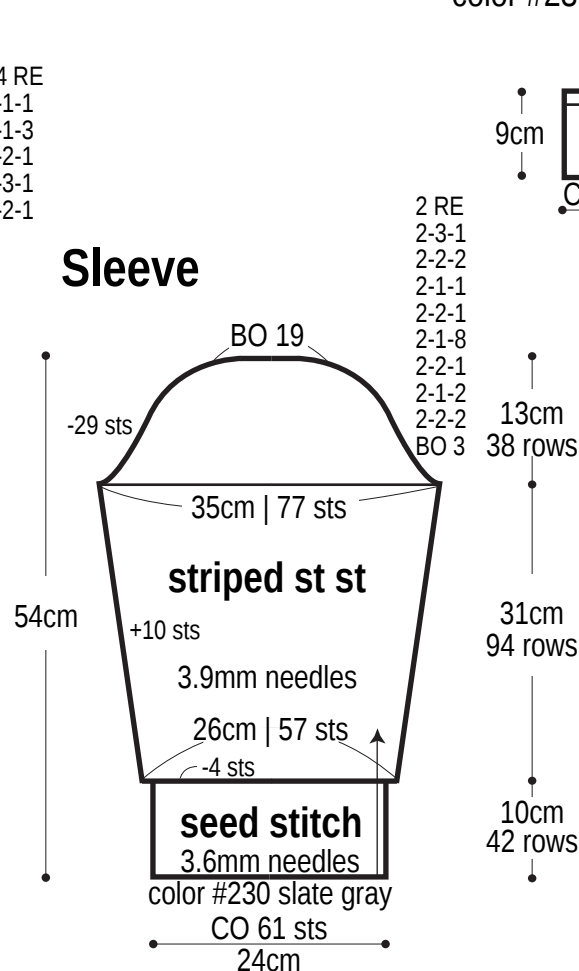
BO = bind off CO = cast on PU = pick up RE = row(s) even st st = stockinette stitch #-#-# = rows-stitches-times

Back



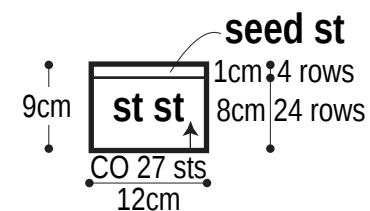
Right front *Reverse shaping for left front.

Sleeve

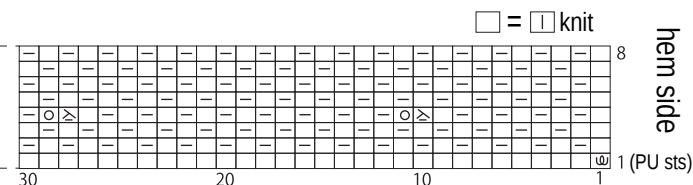
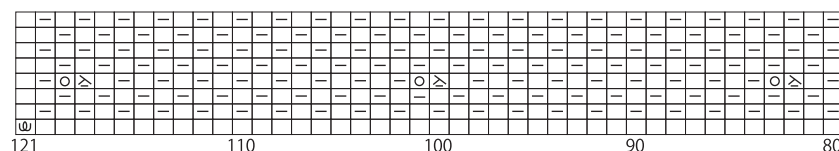


Pocket (make 2)

3.9mm needles
color #230 slate gray



Buttonband & right front buttonholes 3.6mm needles

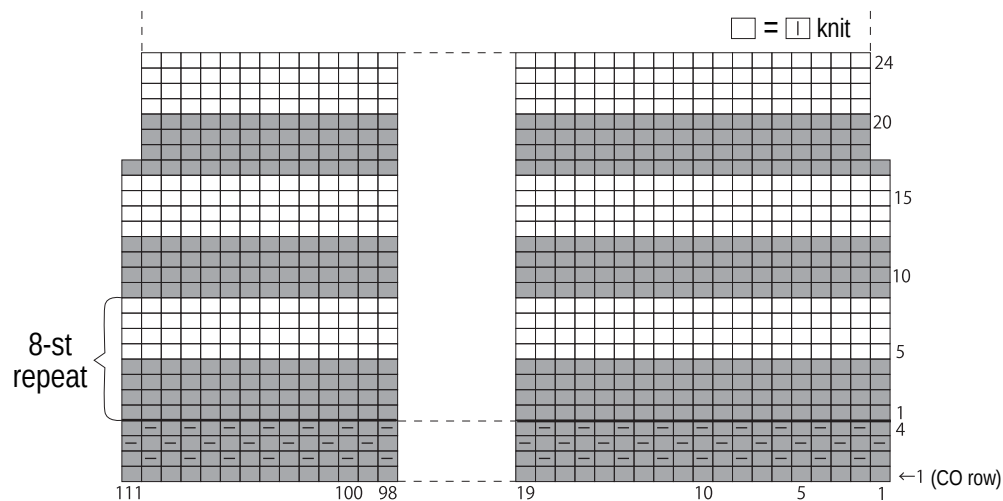


⊖ = backwards loop cast-on increase

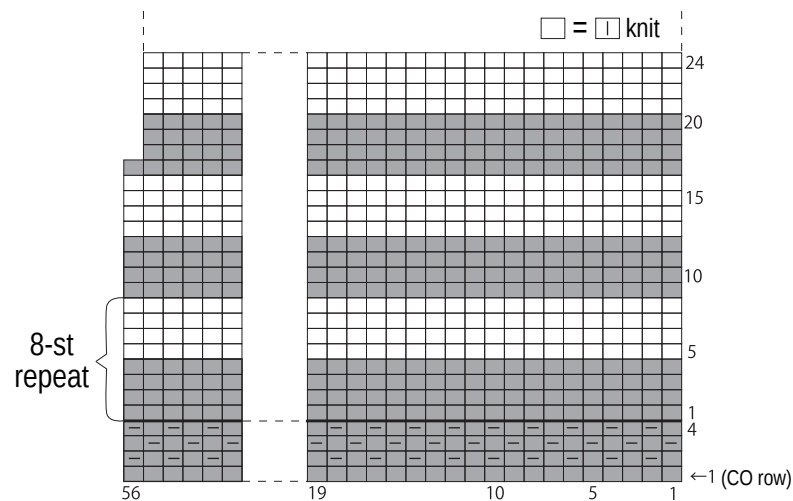
□ = □ knit

hem side

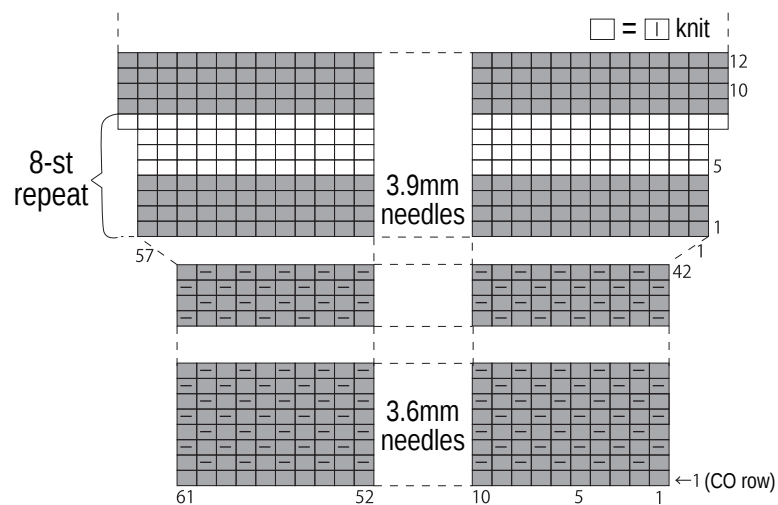
Back 3.9mm needles



Right front 3.9mm needles

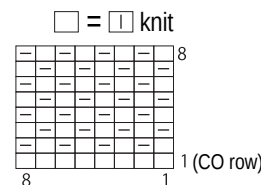


Sleeve



Seed stitch

2-st, 2-row repeat



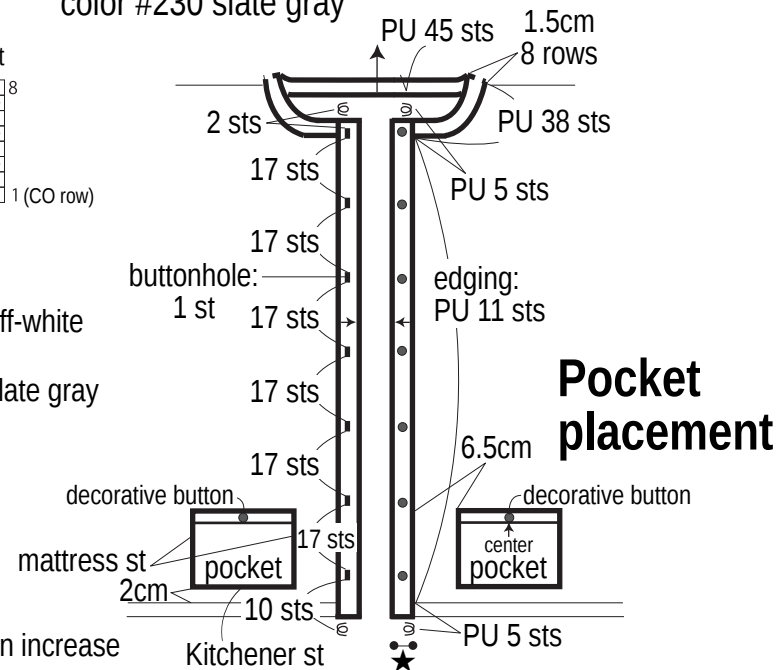
= color #201 off-white

= color #230 slate gray

Collar & buttonband

seed stitch, 3.6mm needles

color #230 slate gray



⓪ = backwards loop cast-on increase

★ = 2cm | 8 rows