

1219kb Squirrel Cowichan Vest



Suggested yarn:

- Pierrot Yarns Kuchen [100% wool; 153 yds/140m per 8.82 oz./250g cone];
 - color #01 Milky White, 1 cone [15g]
 - color #08 Red Beans, 1 cone [65g]
 - color #09 Ink Blue, 2 cones [425g]
 - color #10 Dark Gray, 1 cone [50g]

Tools/Notions:

- 8.0mm (US L) and 10.0mm (US N) knitting needles or sizes necessary to achieve gauge
- 5 buttons (25mm/0.98")

Finished measurements:

- bust 96cm/37.80"
- cross back width 39cm/15.35"
- back length 59.5cm/23.43"

Gauge (10cm/4" square):

- stranded pattern stitch: 9.5 sts and 12.5 rows

Gauge may vary according to individual knitting style. Change needle size if necessary to achieve gauge. Alternatively, rework pattern with your own gauge measurements.

Summary

Back: Cast on with long-tail cast-on method. Work in k1p1 ribbing, then continue in stranded pattern stitch. Work armscye area in garter stitch. Bind off stitches for neckline. Place shoulder stitches on stitch holders; do not bind off.

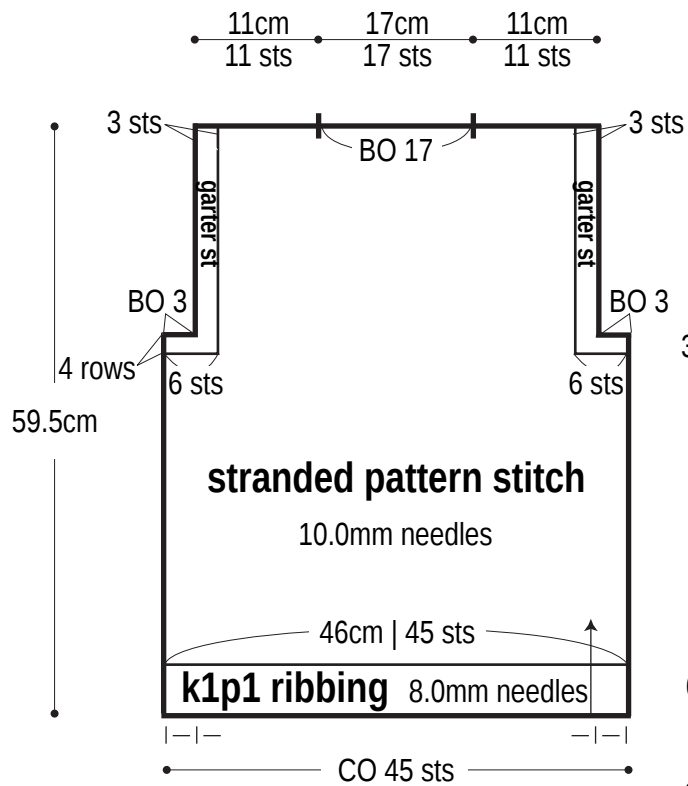
Front: Begin as for back, but work buttonband in garter stitch (with buttonholes in right front only) as you work the front in stranded pattern stitch. Work collar in garter stitch as extension of buttonband (see schematic). Bind off collar. Place shoulder stitches on stitch holders; do not bind off.

Finishing: Seam shoulders with crochet slip stitch seam. Seam sides with mattress stitch. Pick up stitches around back neckline and knit back collar. Bind off. Seam sides of back collar to bind-off edge of front collar using whipstitch. Fasten buttons to buttonband.

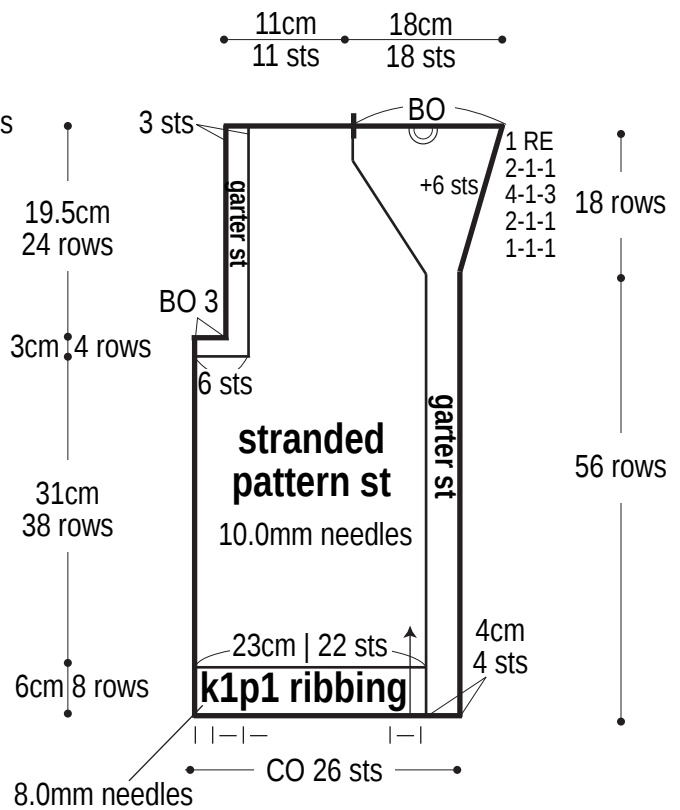
Abbreviations:

BO = bind off
CO = cast on
k = knit
p = purl
PU = pick up
RE = row(s) even
#-#-# = rows-stitches-times

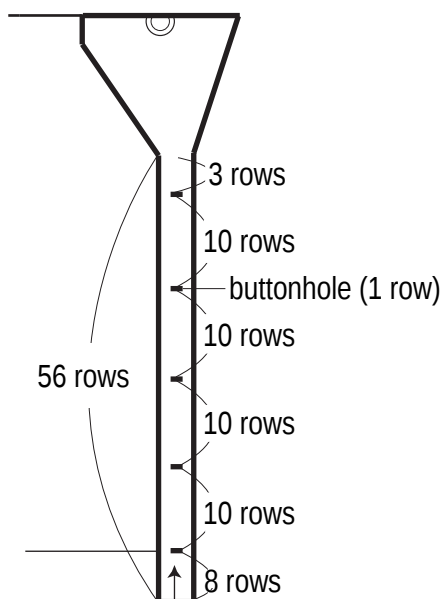
Back



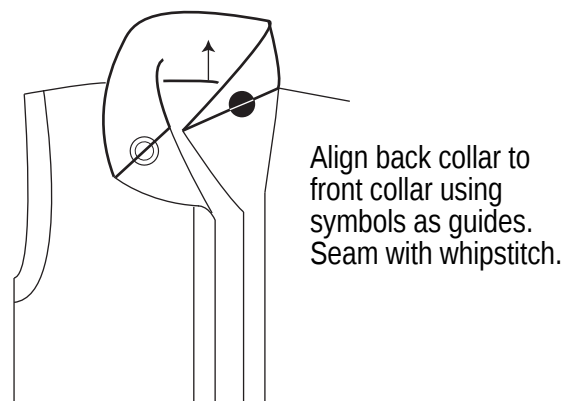
Front



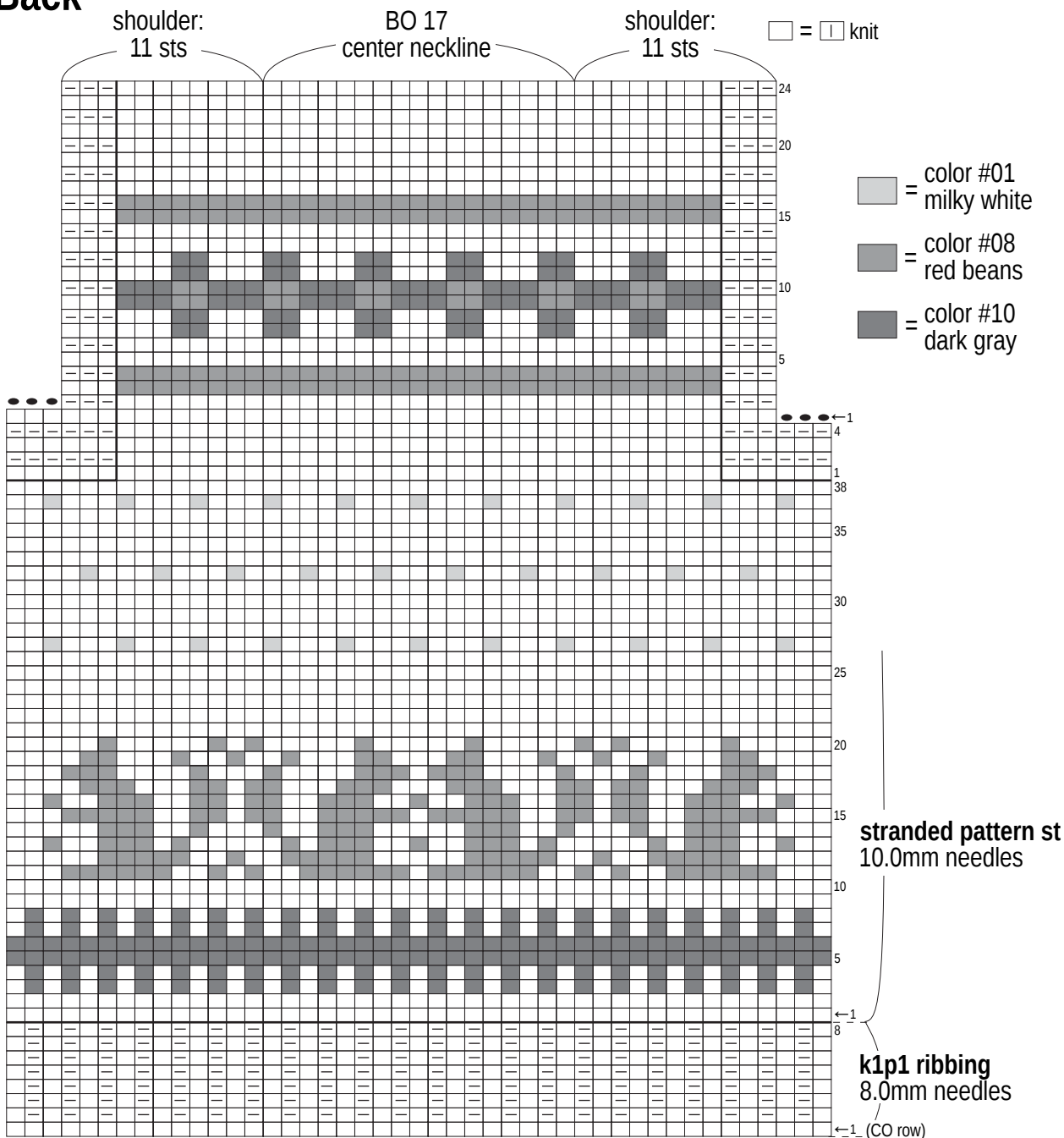
Buttonholes



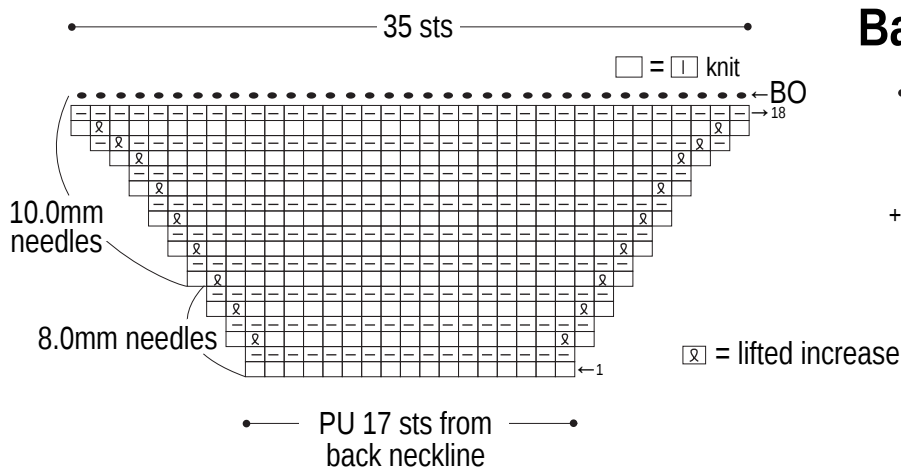
How to seam collar



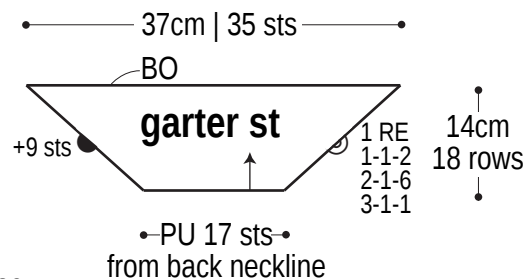
Back



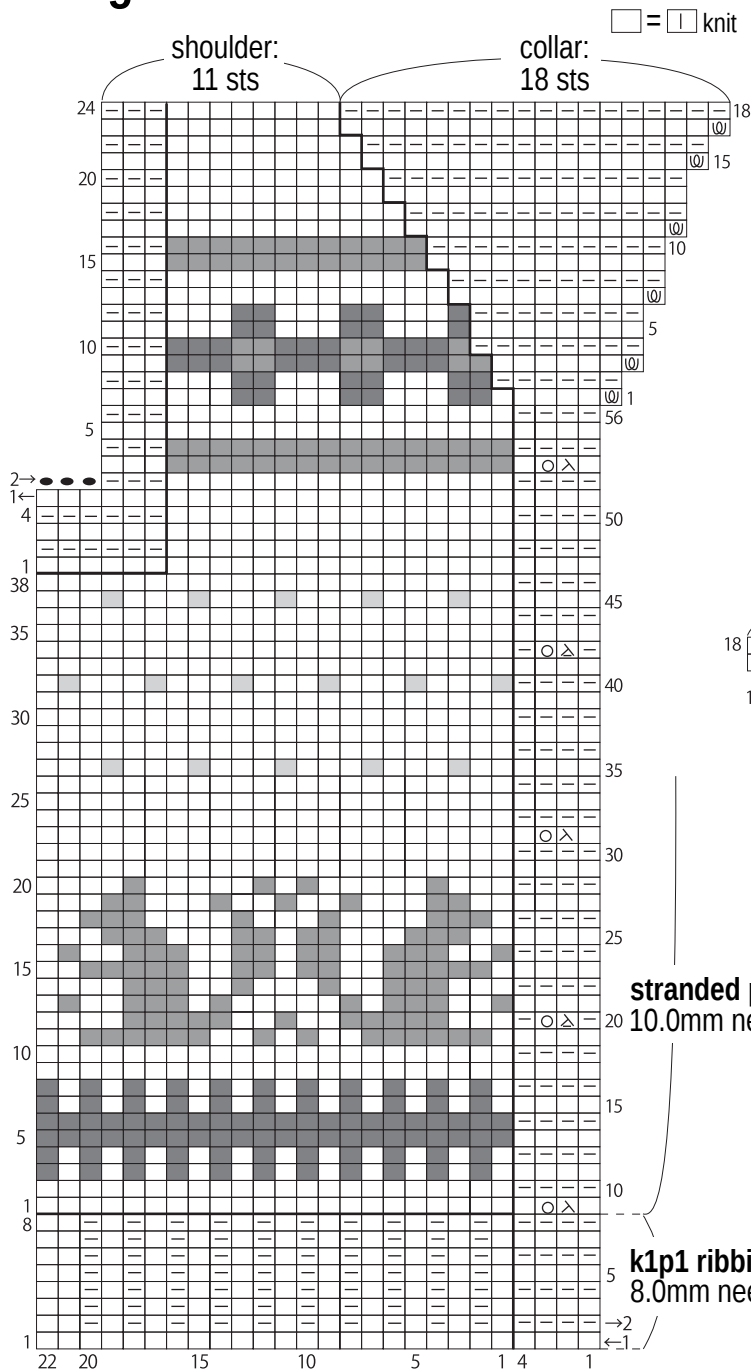
Back collar 8.0 & 10.0mm needles



Back collar

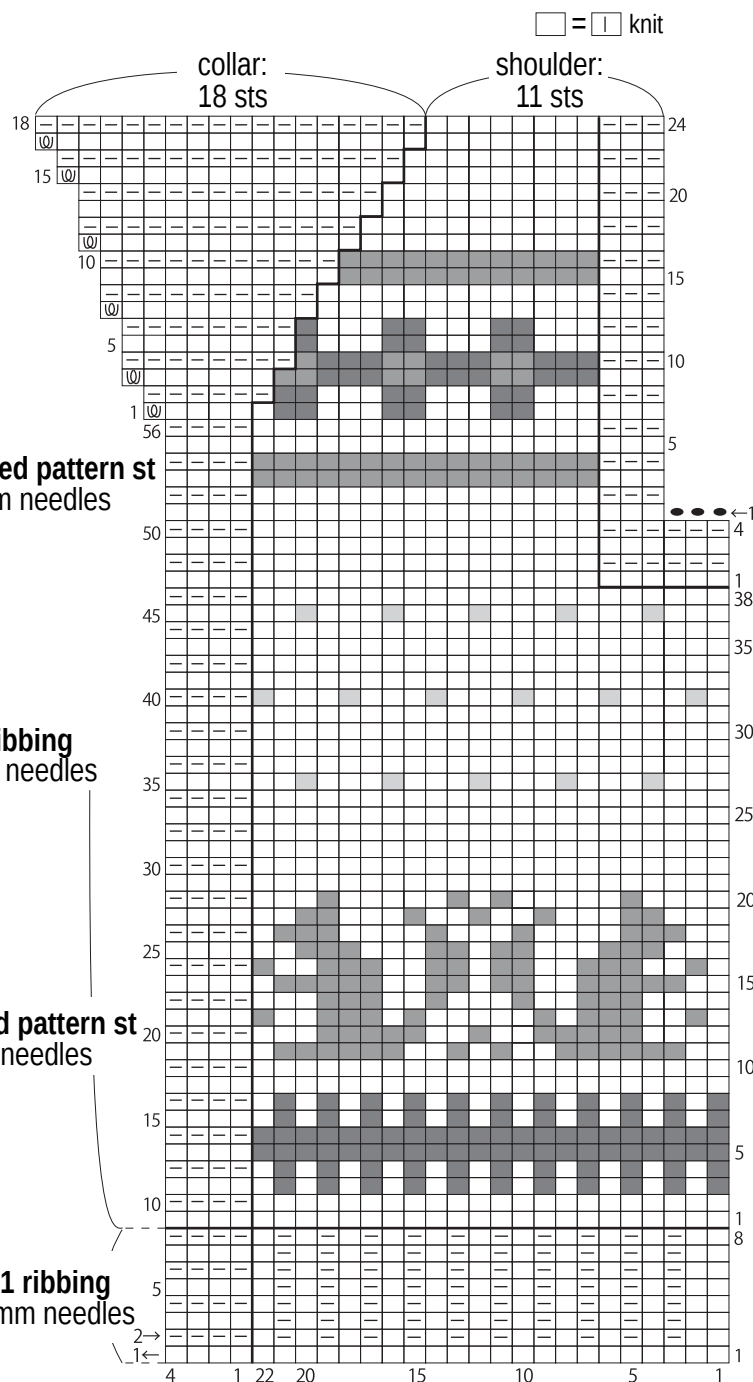


Right front



- ⊗ = slip, slip, knit
- ⊗ = knit 2 sts together
- = yarn over
- ⊗ = backwards loop cast-on increase

Left front



stranded pattern st
10.0mm needles

k1p1 ribbing
8.0mm needles

stranded pattern st
10.0mm needles

k1p1 ribbing
8.0mm needles