

tricot11-6 Loire Wide-neck Sweater



Suggested yarn:

- Keito-Zakka Stores Loire Cotton [100% cotton; 262 yds/240m per 1.41 oz./40g skein];
 - color #45 silver gray, 8 skeins [320g]

Tools/Notions:

- 2.7mm (approx. US 2) and 3.3mm (approx. US 4) knitting needles or sizes necessary to achieve gauge

Finished measurements:

- bust 123cm/48.43"
- center back neck-to-cuff 47.5cm/18.70"
- back length 56cm/22.05"

Gauge (10cm/4" square):

- pattern stitch: 27 sts and 37 rows

Gauge may vary according to individual knitting style. Change needle size if necessary to achieve gauge. Alternatively, rework pattern with your own gauge measurements.

Summary

✿**Note:** Entire garment worked with 2 strands of yarn held together.

Body: Cast on with long-tail cast-on method. Work in k2p2 ribbing, then in pattern stitch. Shape sleeves using backwards loop cast-on increases as shown in chart.

Finishing: Seam shoulders with crochet slip stitch seam. Seam sides with mattress stitch. Seam sleeves with whipstitch. Pick up stitches around neckline and cuffs, respectively; work k2p2 ribbing in the round. Bind off in pattern.

Abbreviations:

BO = bind off

CO = cast on

k = knit

p = purl

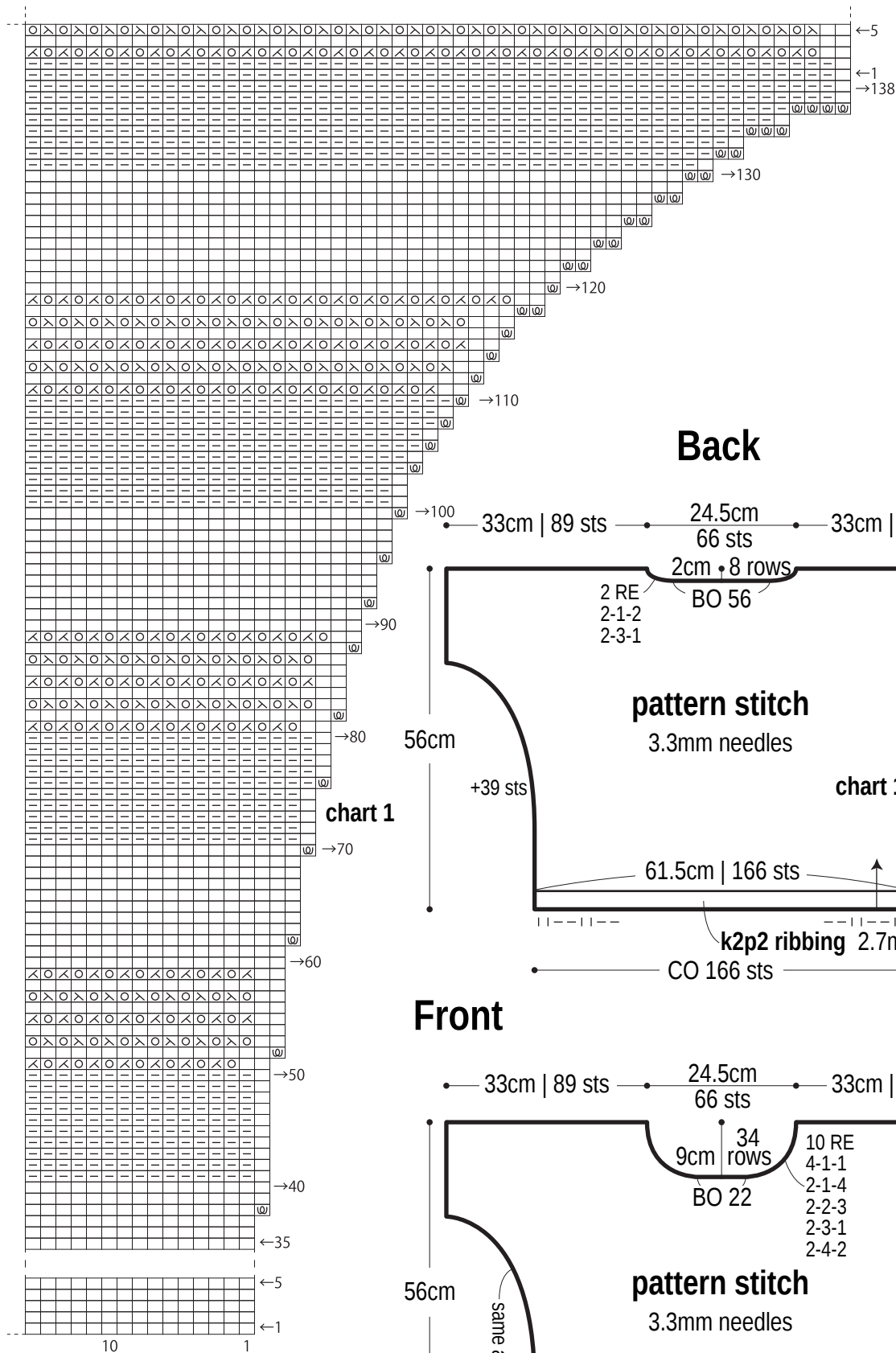
PU = pick up

RE = row(s) even

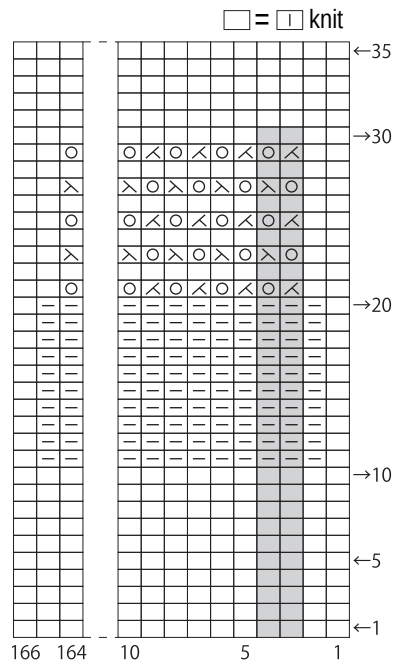
#-#-# = rows-stitches-times

Sleeve shaping 3.3mm needles

□ = □ knit



Pattern stitch 3.3mm needles



■ = 1 repeat = 2 sts & 30 rows

Finishing

k2p2 ribbing
2.7mm needles

