

tricot11-1 Vienne Summer Sweater



Suggested yarn:

- Pierrot Yarns Vienne [100% cotton; 98 yds/90m per 1.41 oz./40g skein];
 - color #04 citron, 12 skeins [470g]

Tools/Notions:

- 3.3mm (approx. US 4) and 3.6mm (approx. US 5) knitting needles or sizes necessary to achieve gauge

Finished measurements:

- bust 96cm/37.80"
- cross back width 37cm/14.57"
- back length 52.5cm/20.67"
- sleeve length 54cm/21.26"

Gauge (10cm/4" square):

- pattern stitch A: 26 sts and 30 rows
- pattern stitch B: 24 sts and 31 rows
- pattern stitch C: 30 sts and 30 rows

Gauge may vary according to individual knitting style. Change needle size if necessary to achieve gauge. Alternatively, rework pattern with your own gauge measurements.

Summary

Body: Cast on for back with long-tail cast-on method. Work in k1p1 ribbing, then in pattern stitch A. Cast on for front in the same manner. Work front in k1p1 ribbing, then in pattern stitches A & B.

Sleeve: Cast on as for body. Work center panel in pattern stitch C and both sides in k1p1 ribbing. Then continue with pattern stitch C at center and pattern stitch A on both sides.

Finishing: Seam shoulders with crochet slip stitch seam. Seam sides and sleeve undersides with mattress stitch. Pick up stitches along neckline; work collar in k1p1 ribbing in the round. Bind off. Seam sleeves to body with crochet slip stitch seam.

Abbreviations:

BO = bind off

CO = cast on

k = knit

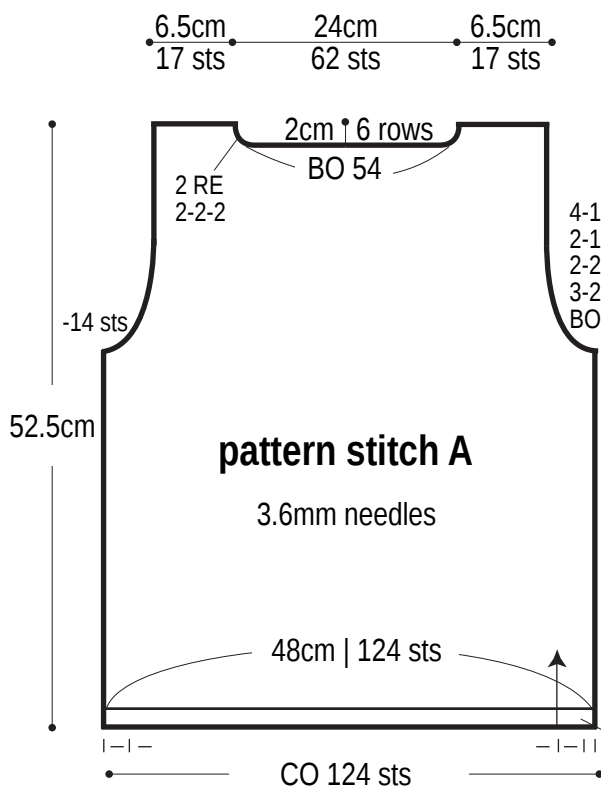
p = purl

PU = pick up

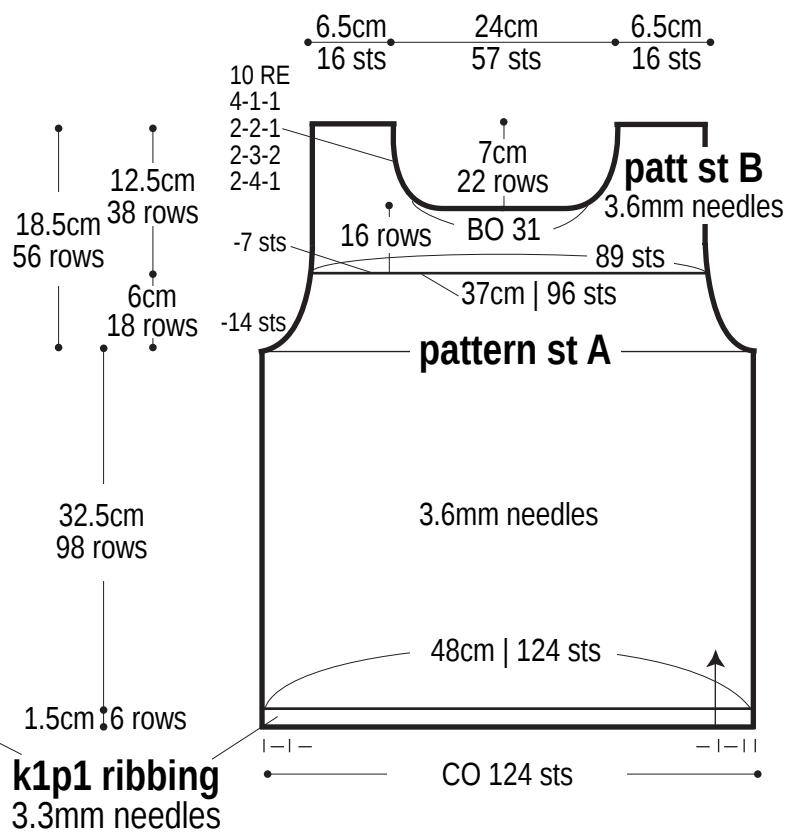
RE = row(s) even

#-#-# = rows-stitches-times

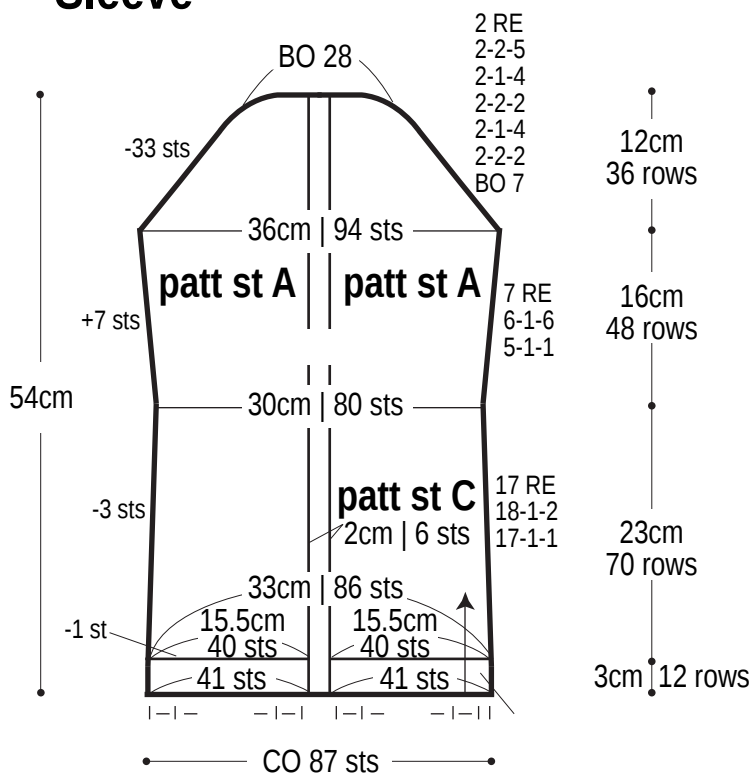
Back



Front

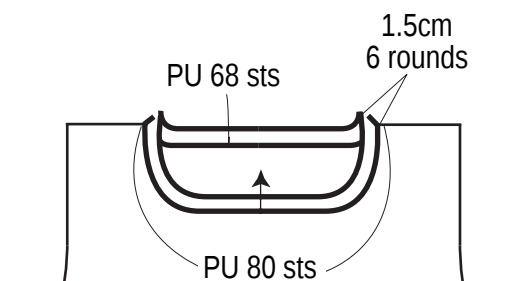


Sleeve

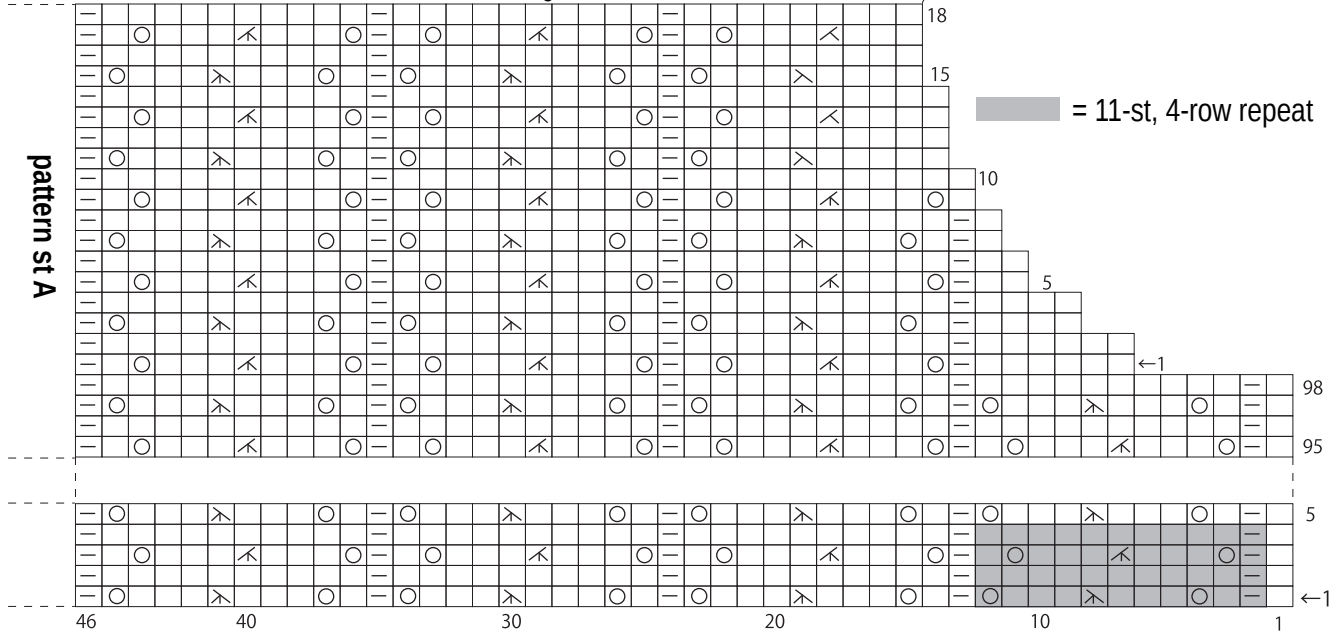
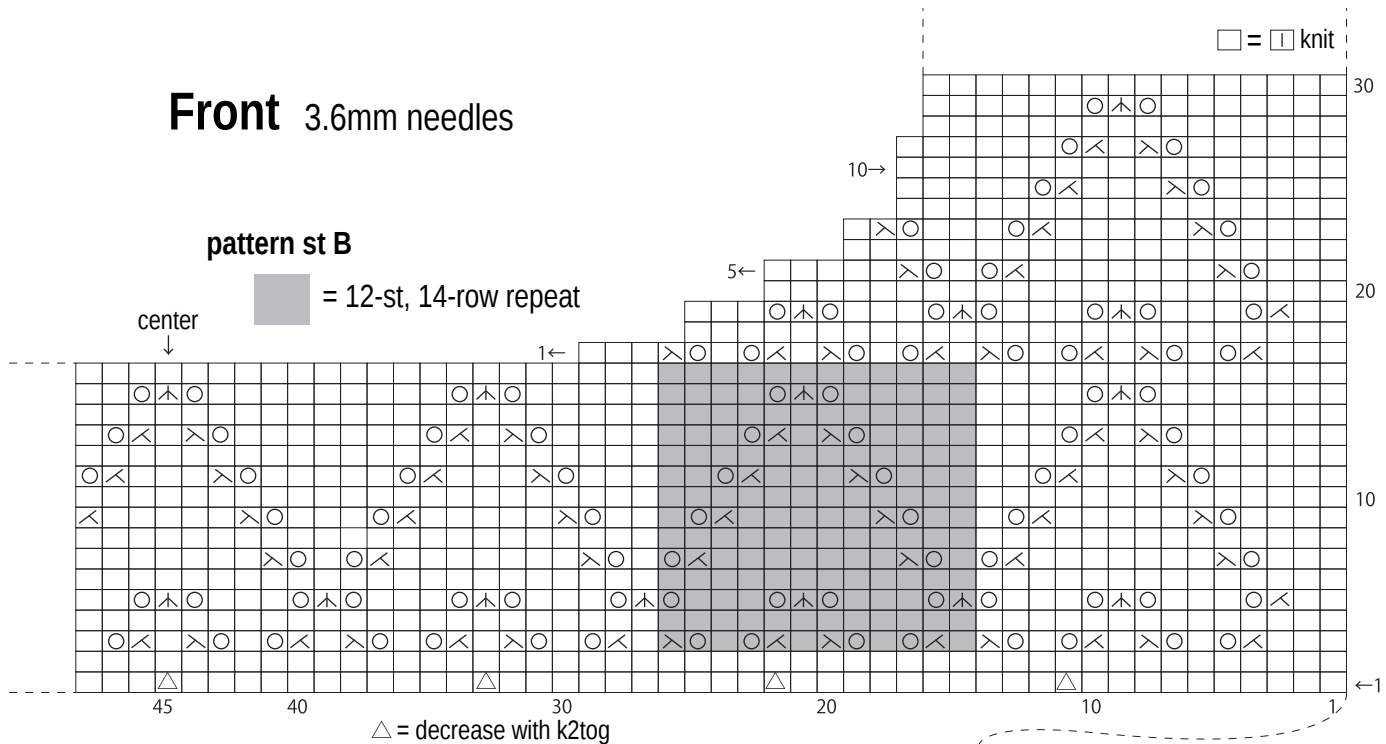


Finishing: collar

k1p1 ribbing
3.3mm needles

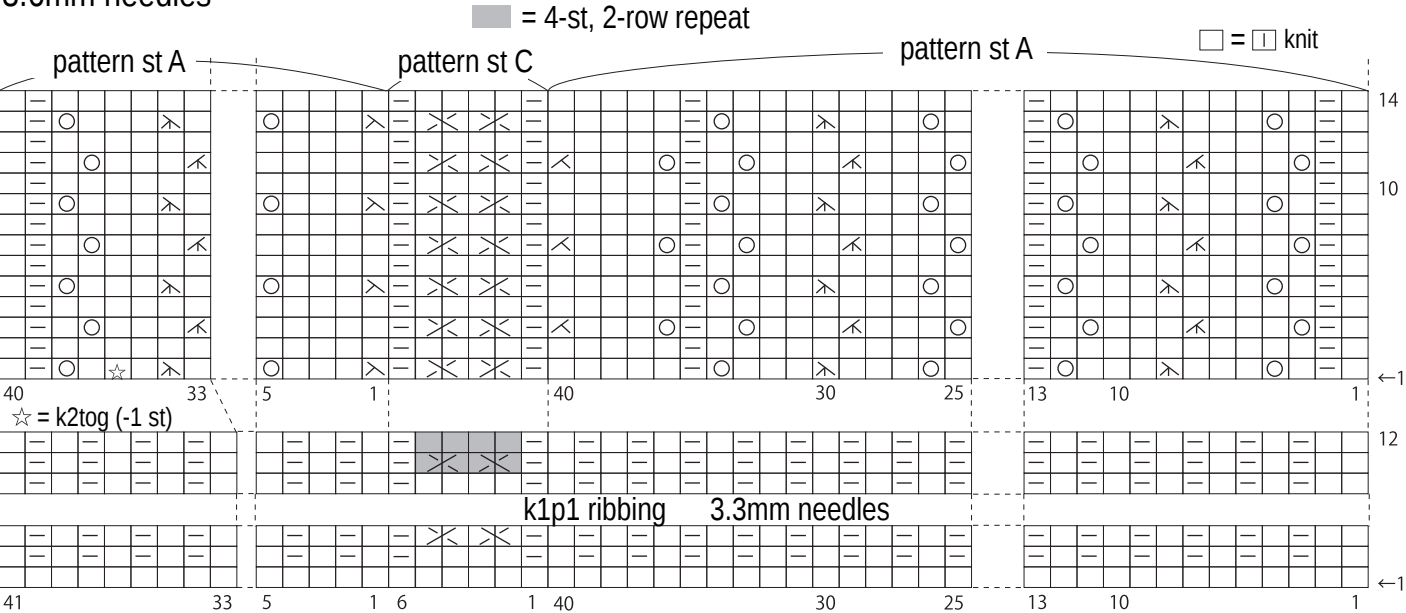


Front 3.6mm needles



Sleeve: pattern stitch

3.6mm needles



= 4-st, 2-row repeat

= knit

☆ = k2tog (-1 st)

k1p1 ribbing 3.3mm needles