

Dot Pattern Vest



Suggested yarn:

- Keito-Zakka Stores Lucky Denim Lucky [52% cotton, 48% acrylic; 112 yds/102m per 1.41 oz./40g skein]; color #12 banana, 6 skeins [220g]

Tools/Notions:

- 3.3mm (approx. US 4) and 3.6mm (approx. US 5) knitting needles or sizes necessary to achieve gauge

Finished measurements:

- bust 90cm/35.43"
- cross back width 35cm/13.78"
- back length 64.5cm/25.39"

Gauge (10cm/4" square):

- pattern stitch: 21 sts and 29 rows
- brioche rib stitch: 21 sts and 37 rows

Gauge may vary according to individual knitting style. Change needle size if necessary to achieve gauge. Alternatively, rework pattern with your own gauge measurements.

Summary

Body: Cast on with long-tail cast-on method. Work in brioche rib stitch, then continue in pattern stitch. Work side slits according to schematics and chart. When finished with front shoulders, continue working back neckline as extension of front. Increase 1 st at each side of back neckline on the first row after the shoulders.

Finishing: Seam shoulders with slip stitch seam. Seam sides with mattress stitch, leaving side slits unseamed.

Abbreviations:

blco = increase using backwards-loop cast-on method

bricst = Row 1: yarn over, slip 1 st from left needle to right needle. Row 2: knit yarn over & slipped st together.

BO = bind off

CO = cast on

k = knit

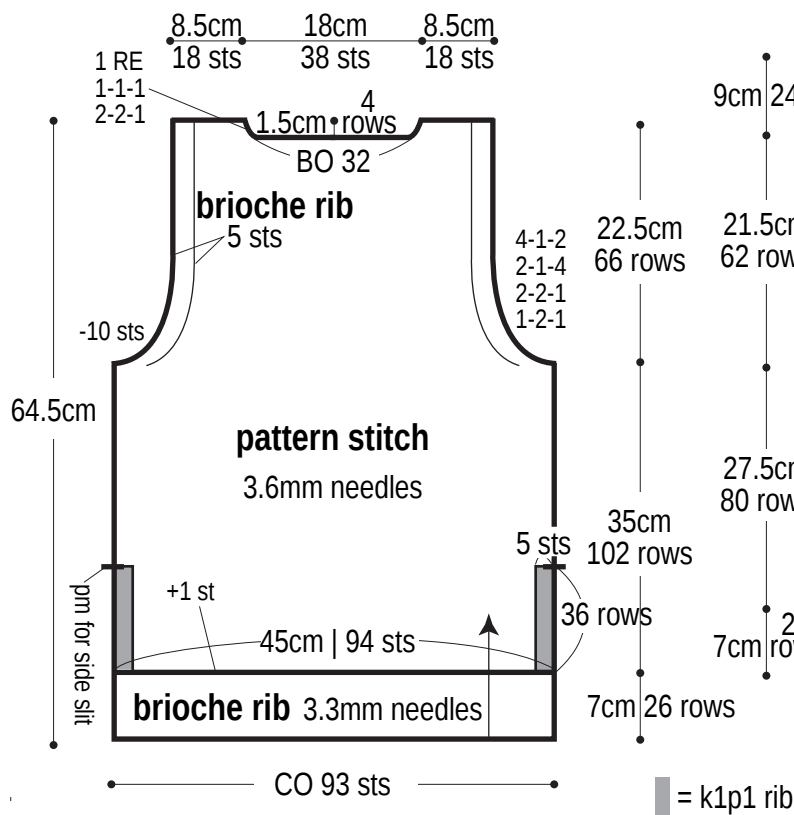
p = purl

pm = place marker

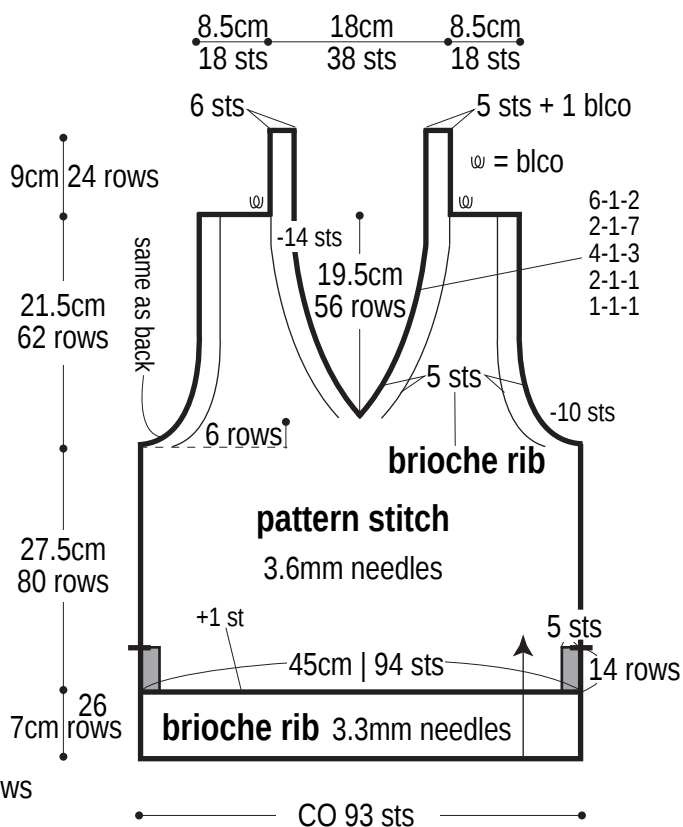
RE = row(s) even

= rows-stitches-times

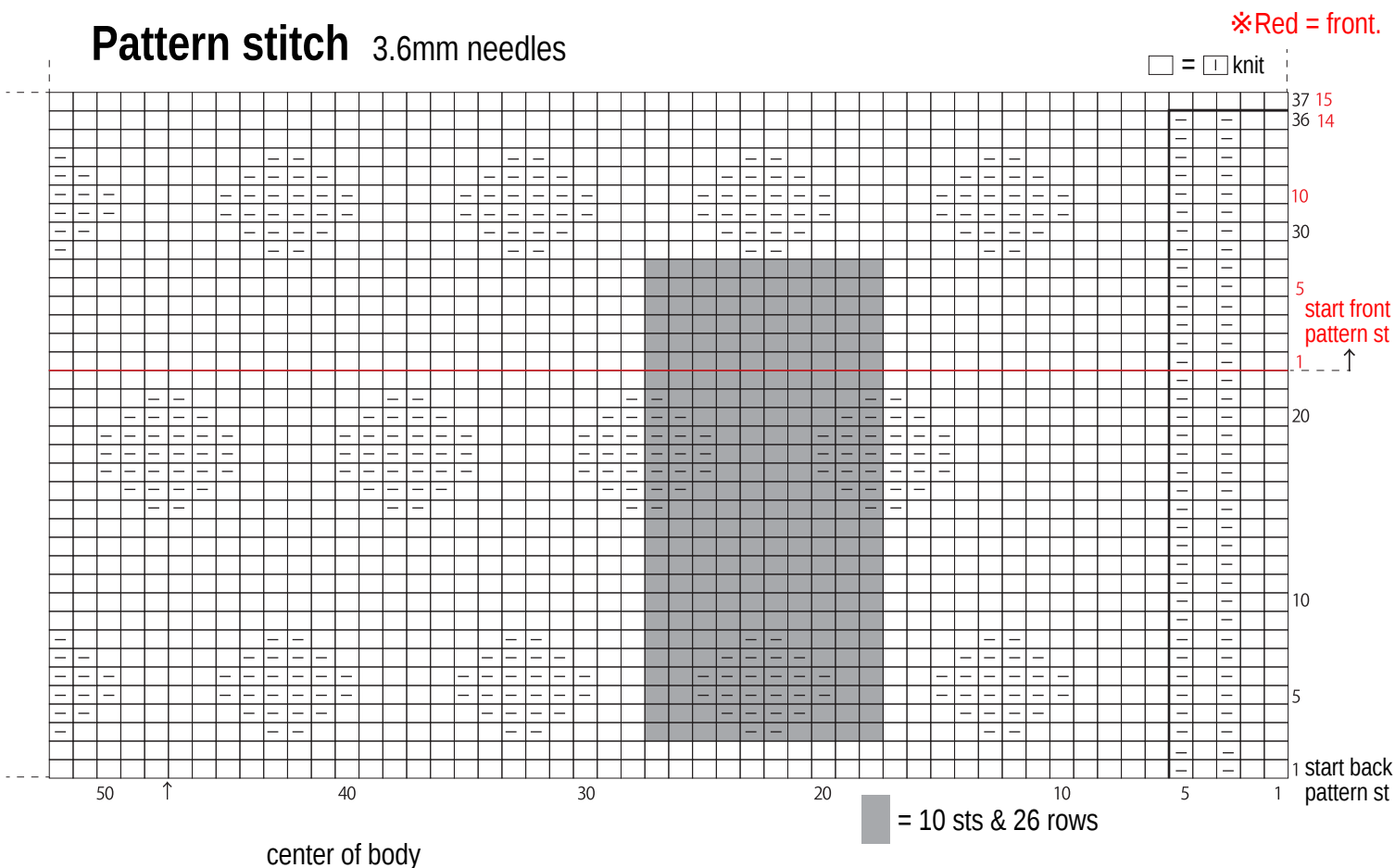
Back



Front

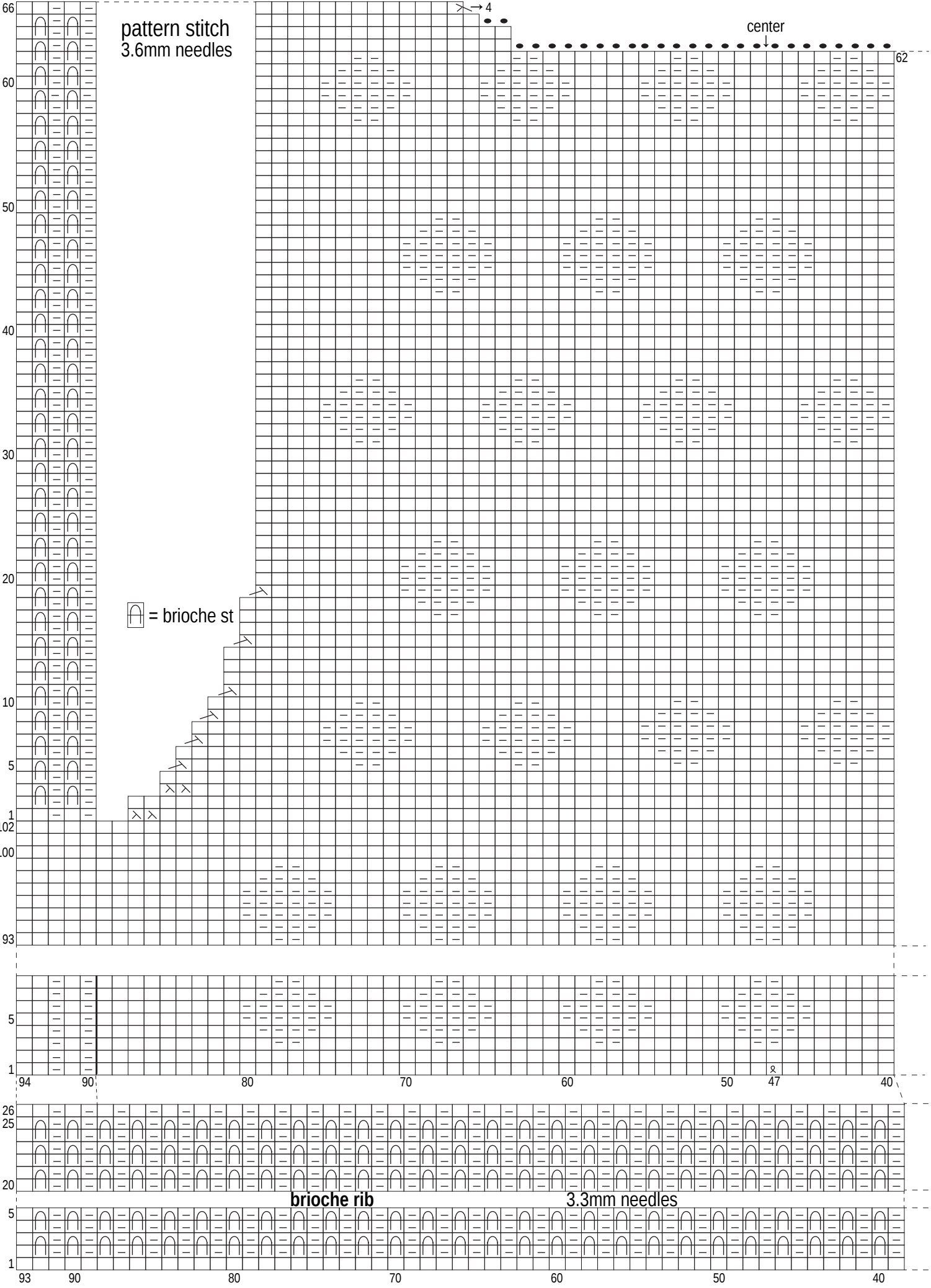


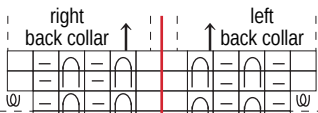
Pattern stitch 3.6mm needles



Back

□ = □ knit





□ = □ knit

Front

pattern stitch
3.6mm needles

V-neck opening

☐ = brioche st

