

216w-04 Lace Sleeve Sweater



Suggested yarn:

- PurpleYarns Lucy [78% acrylic, 12% mohair, 10% polyester; 219 yds/200m per 3.53 oz./100g skein]; color #105 red, 2 skeins [200g]

Tools/Notions:

- 6.3mm (approx. US 10.5) and 7.0mm (no US equivalent) knitting needles or sizes necessary to achieve gauge
- 7.0mm (no US equivalent) crochet hook or size necessary to achieve gauge

Finished measurements:

- bust 94cm/37.01"
- cross back width 32cm/12.60"
- back length 51cm/20.08"
- sleeve length 42.5cm/16.73"

Gauge (10cm/4" square):

- stockinette stitch: 11 sts and 14 rows
- mesh stitch: 4 chain-spaces and 9 rows

Gauge may vary according to individual knitting style. Change needle size if necessary to achieve gauge. Alternatively, rework pattern with your own gauge measurements.

Summary

Back & front: Cast on with long-tail cast-on method. Work in k1p1 ribbing and then continue in stockinette stitch.

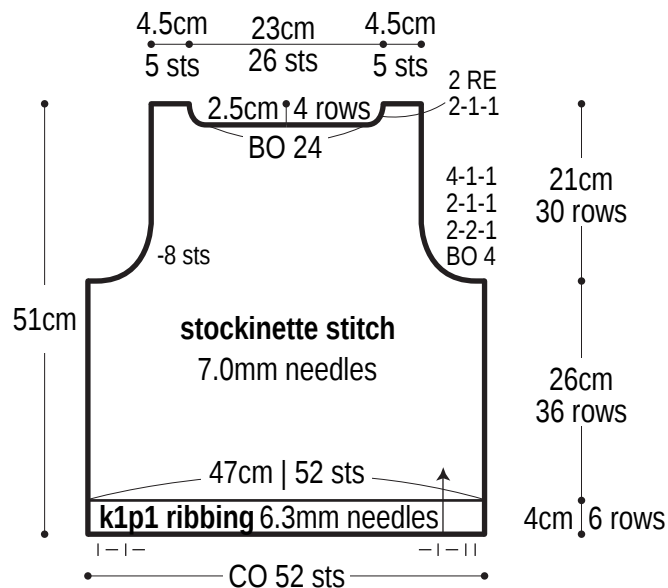
Sleeve (make 2): With crochet hook, work foundation chain to begin. Work sleeve in mesh stitch. With knitting needles, pick up stitches along foundation chain edge and work k1p1 ribbing. Bind off in pattern.

Finishing: Seam sleeves to body with crochet slip stitch seam. Seam sides with mattress stitch. Seam sleeve undersides with chain seam (alternating chain st and slip st as needed to maintain pattern). With knitting needles, pick up stitches around neckline. Work collar in k1p1 ribbing in the round. Bind off in pattern. Seam sleeves to body with crochet slip stitch seam.

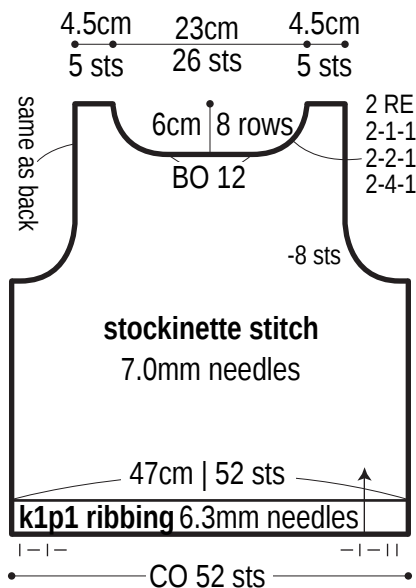
Abbreviations:

BO = bind off ch = chain st ch-sp = chain-space(s) CO = cast on k = knit p = purl PU = pick up RE = row(s) even #-#-# = rows-stitches-times

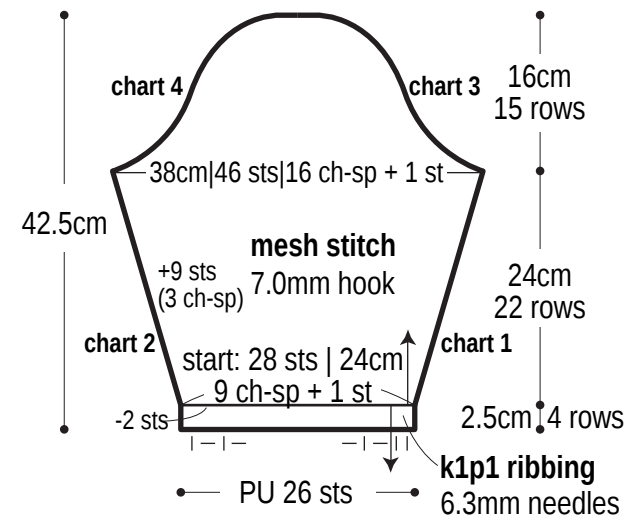
Back



Front

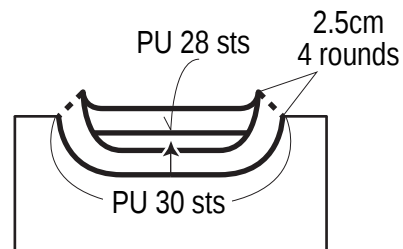


Sleeve

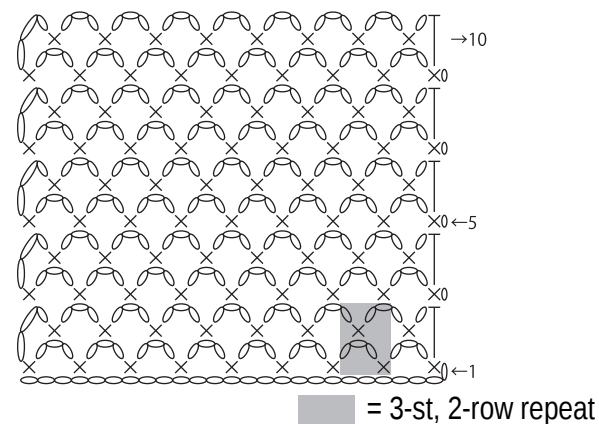


Collar

k1p1 ribbing, 6.3mm needles



Mesh stitch 7.0mm hook



Sleeve

7.0mm hook

↙ = carry yarn
(without cutting)

