

1201fsp French Sleeve Pullover



Suggested yarn:

- Pierrot Yarns New Shine Cotton [100% cotton; 148 yds/135m per 1.06 oz./35g skein];
- color #19 silver gray, 6 skeins [190g]

Tools/Notions:

- 2.3mm (approx. US B) and 2.5mm (approx. US B or C) crochet hooks or sizes necessary to achieve gauge

Finished measurements:

- bust 88cm/34.65"
- cross back width 32.5cm/12.80"
- back length 51cm/20.08"

Gauge (10cm/4" square):

- pattern stitch A: 27.5 sts and 16 rows
- pattern stitch B (with 2.3mm hook): 27.5 sts and 12 rows

Gauge may vary according to individual crochet style. Change hook size if necessary to achieve gauge. Alternatively, rework pattern with your own gauge measurements.

Summary

❖**Note:** Like all Japanese patterns, stitch counts given here for foundation chains do not include any chain sts needed for turning posts.

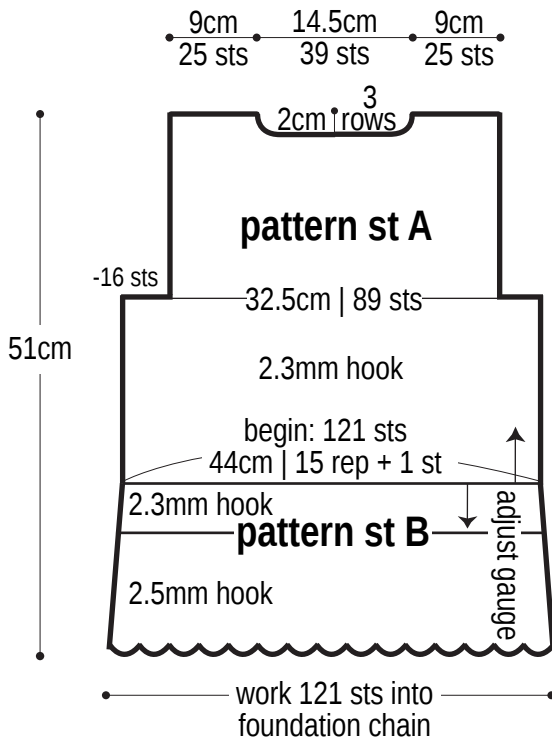
Body: Work foundation chain to begin, then work in pattern stitch A. When upper section is finished, begin lower section (peplum) by working into bottom loops of foundation chain; continue in pattern stitch B.

Finishing: Seam shoulders with chain seam (alternating chain st and slip st as needed to maintain pattern). Working into stitches around armhole, begin working sleeve in pattern stitch B'. Seam sleeves to body and side to side using chain seam. Work edging in the round around neckline.

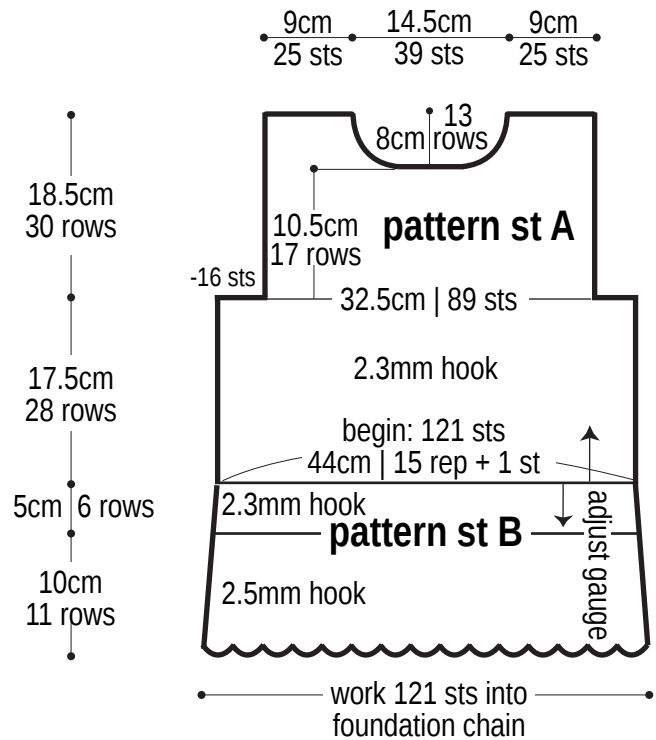
Abbreviations:

ch = chain
dc = double crochet (US)
rep = pattern repeat(s)

Back

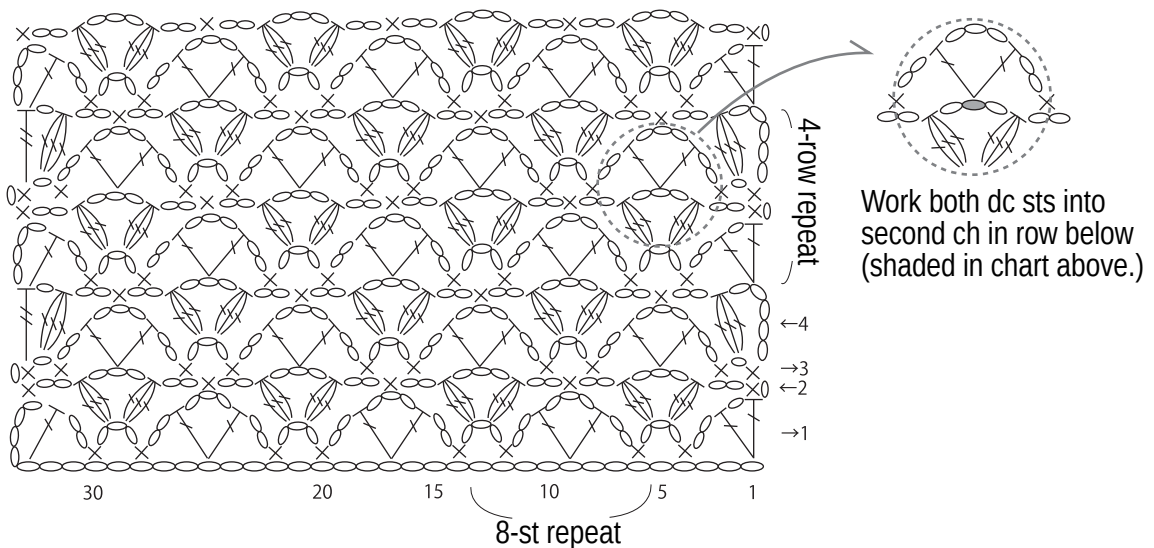


Front

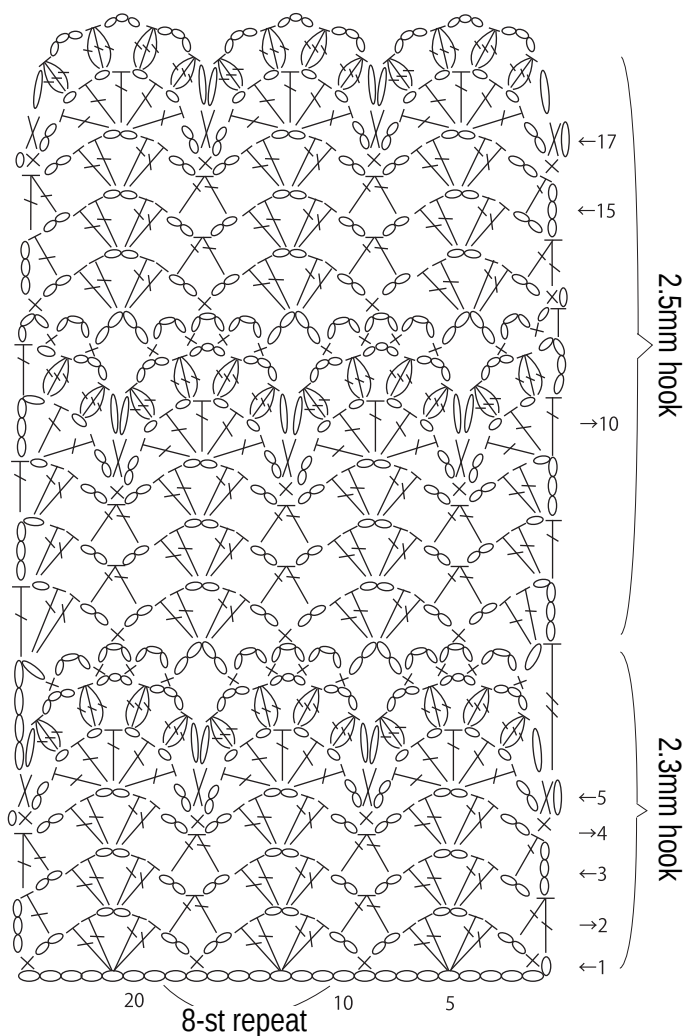


✳️ **Note:** you will adjust gauge in pattern stitch B by changing hook size.

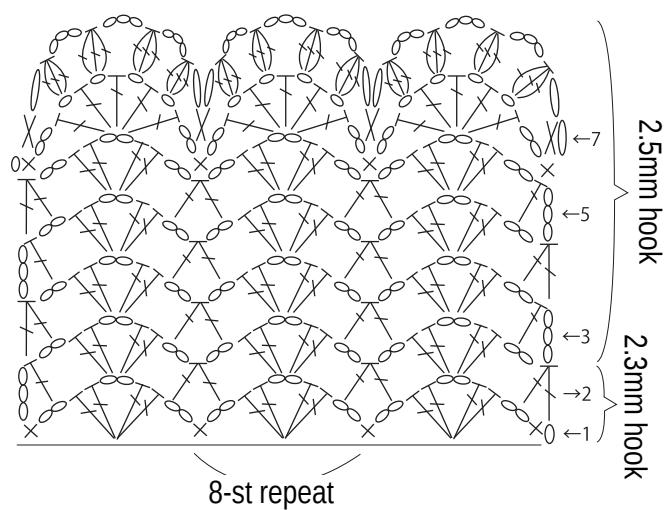
Pattern stitch A 2.3mm hook



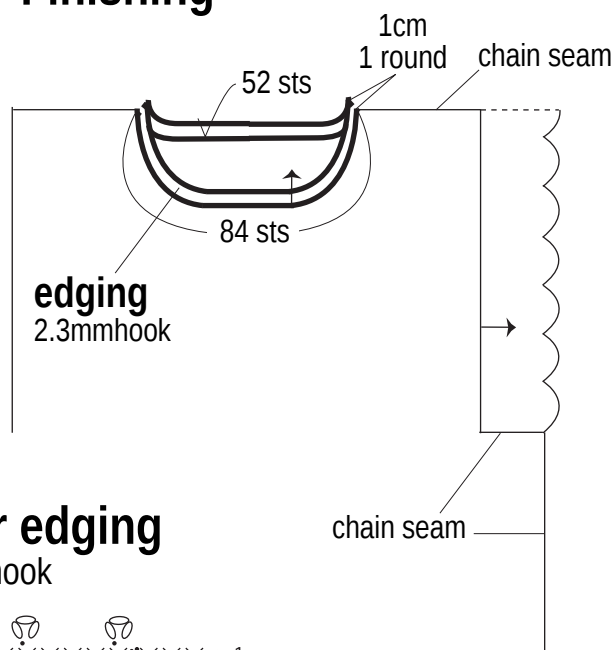
Pattern stitch B



Pattern stitch B'

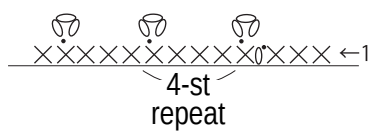


Finishing

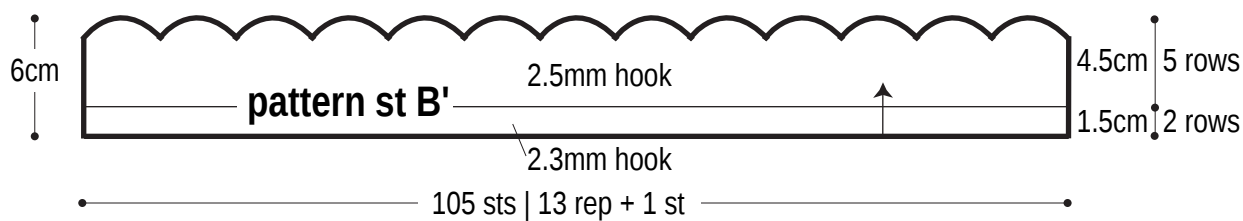


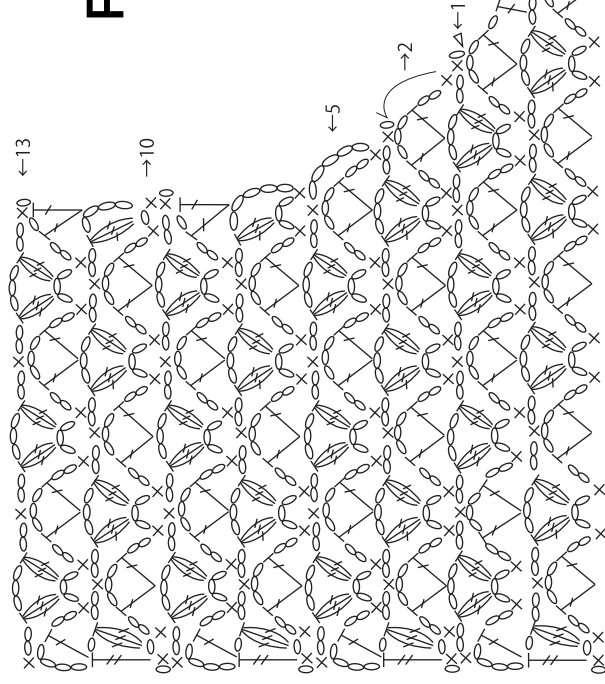
Collar edging

2.3mm hook

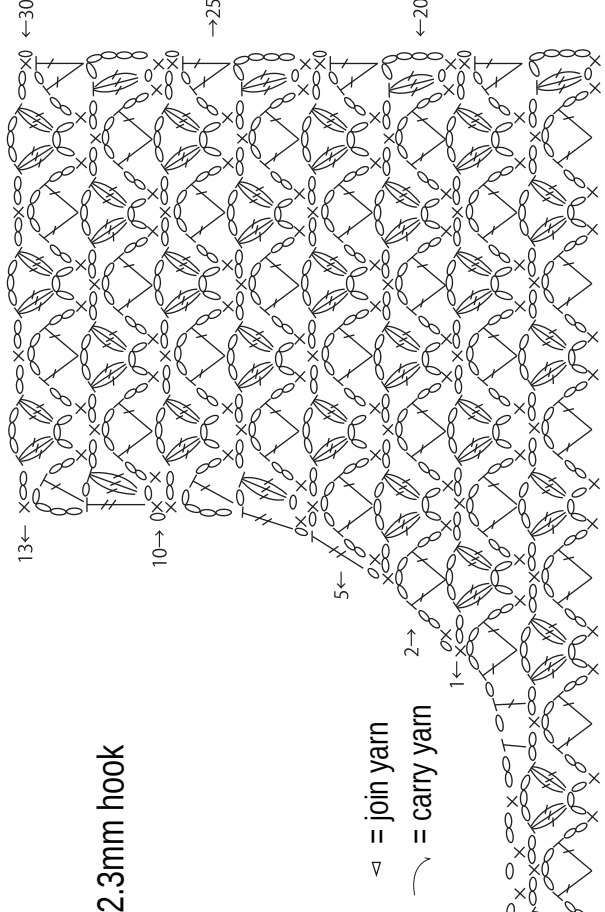


Sleeve





Front 2.3mm hook



Back 2.3mm hook

