

25-26-19 Cabled Vest



Suggested yarn:

- Pierrot Yarns Fine Merino [100% merino wool; 103 yds/94m per 1.06 oz./30g skein];
 - color #209 wasabi, 7 skeins [200g]

Tools/Notions:

- 3.0mm (US 2½) and 3.6mm (approx. US 4 or 5) knitting needles or sizes necessary to achieve gauge
- cable needle

Finished measurements:

- bust 94cm/37.01"
- cross back width 38cm/14.96"
- back length 54cm/21.26"

Gauge (10cm/4" square):

- stockinette stitch: 25 sts and 30 rows
- pattern stitch: 36 sts and 30 rows

Gauge may vary according to individual knitting style. Change needle size if necessary to achieve gauge. Alternatively, rework pattern with your own gauge measurements.

Summary

Back & front: Cast on with long-tail cast-on method. Work in k2p2 ribbing, then continue in stockinette stitch. For front, work central panel in cabled patterned stitch and stockinette stitch on each side. Shape armscye by binding off 4 stitches (on each side) and by working fully fashioned decreases starting on the next row (worked 5 sts in from the edge) with k1p1 ribbing along edge of armhole. See armscye shaping chart for details. When finished with shoulders, do not bind off; place shoulder stitches on stitch holders.

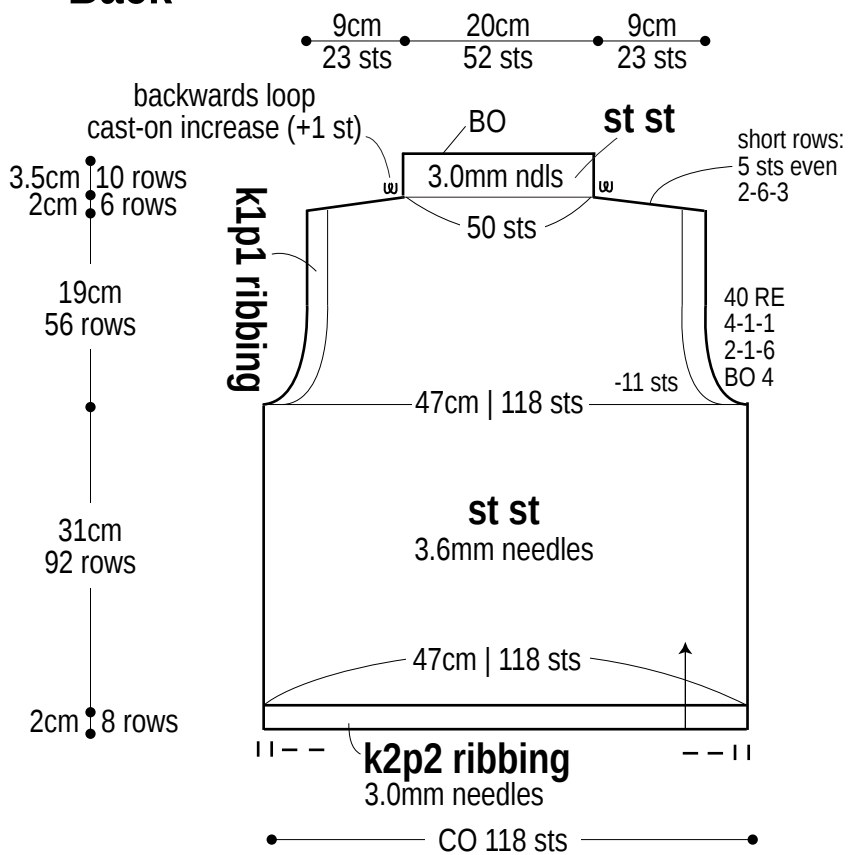
Collar: Work in stockinette stitch as a continuation of front and back, but continue cabled pattern stitch at front center. Bind off.

Finishing: Seam shoulders with three-needle bind-off. Seam sides and sides of collar with mattress stitch.

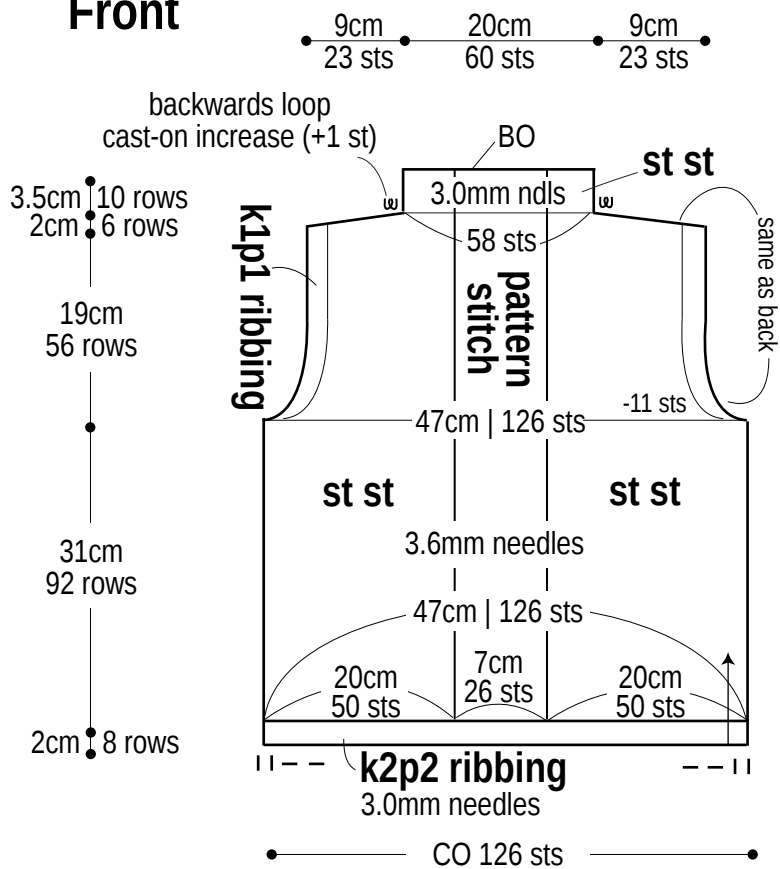
Abbreviations:

BO = bind off
CO = cast on
k = knit
p = purl
RE = row(s) even
st st = stockinette stitch
#-#-# = rows-stitches-times

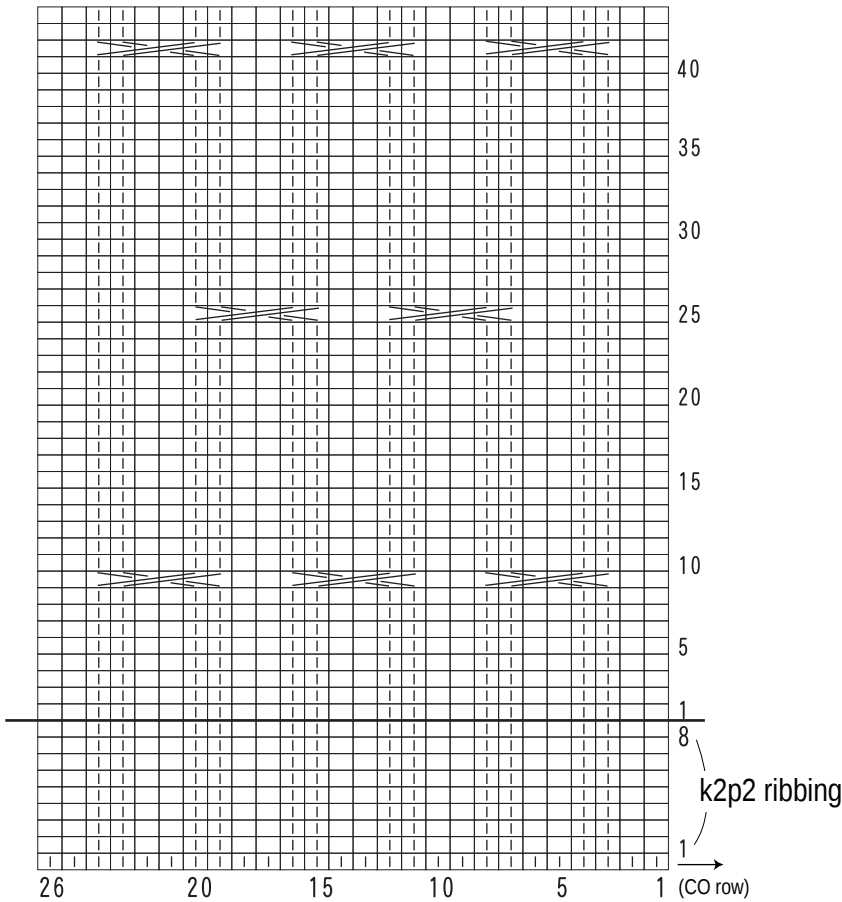
Back



Front



Pattern stitch



Armscye shaping

