

217s-01 Layered Bohemian Capelet



Suggested yarn:

- Pierrot Yarns Carta [90% cotton, 10% silk; 133 yds/122m per 1.41 oz./40g skein]; color #68 navy, 6 skeins [230g]

Tools/Notions:

- 3.9mm (approx. US 6) knitting needles or size necessary to achieve gauge
- 3.0mm (approx. US C or D) crochet hook or size necessary to achieve gauge

Finished measurements:

- bust 106cm/41.73"
- center back neck-to-cuff 41.5cm/16.34"
- back length (not including fringe) 30.5cm/12.01"

Gauge (10cm/4" square):

- stockinette stitch: 25 sts and 35 rows
- pattern stitch: 28 sts and 16 rows

Gauge may vary according to individual crochet style. Change hook size if necessary to achieve gauge. Alternatively, rework pattern with your own gauge measurements.

Summary

✳️**Note:** Like all Japanese patterns, stitch counts given here for foundation chains do not include any chain sts needed for turning posts.

Body: Work foundation chain to begin, then work in pattern stitch.

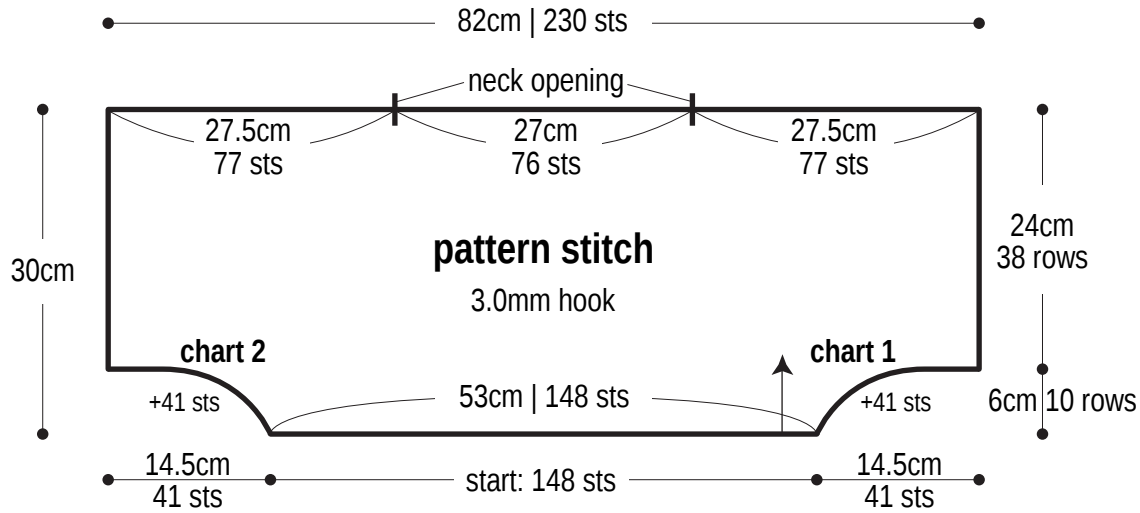
Finishing: Seam shoulders with chain seam (alternating chain st and slip st as needed to maintain pattern). Seam underarms with whipstitch. Work 1 round of sc edging around neckline, cuffs, and hem, respectively. Make fringe and fasten to underarm and hem as shown in finishing schematic.

Abbreviations:

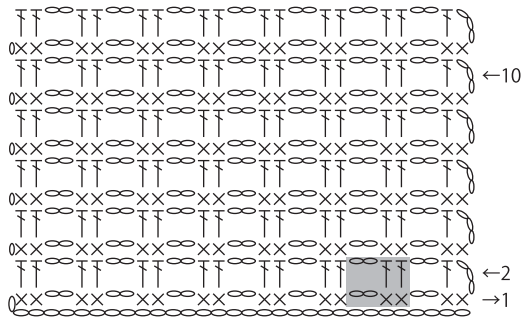
ch = chain

sc = single crochet (US)

Body (make 2)

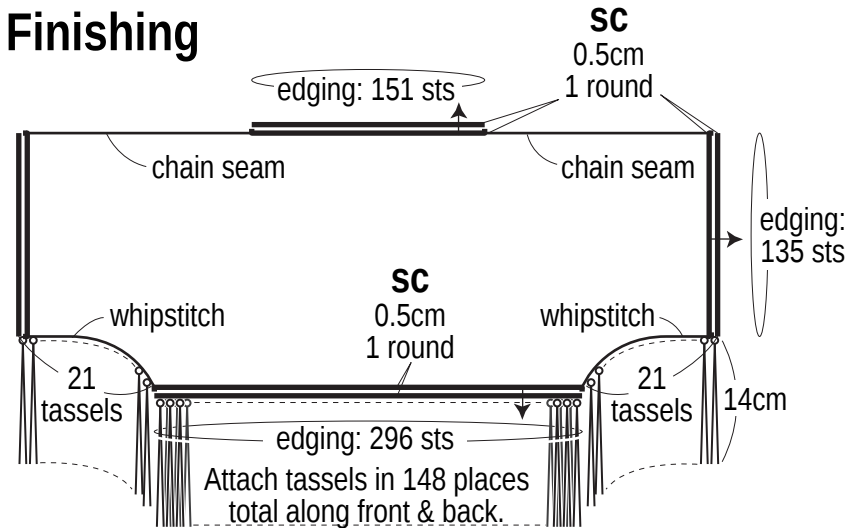


Pattern stitch 3.0mm hook



■ = 1 repeat = 4 sts & 2 rows

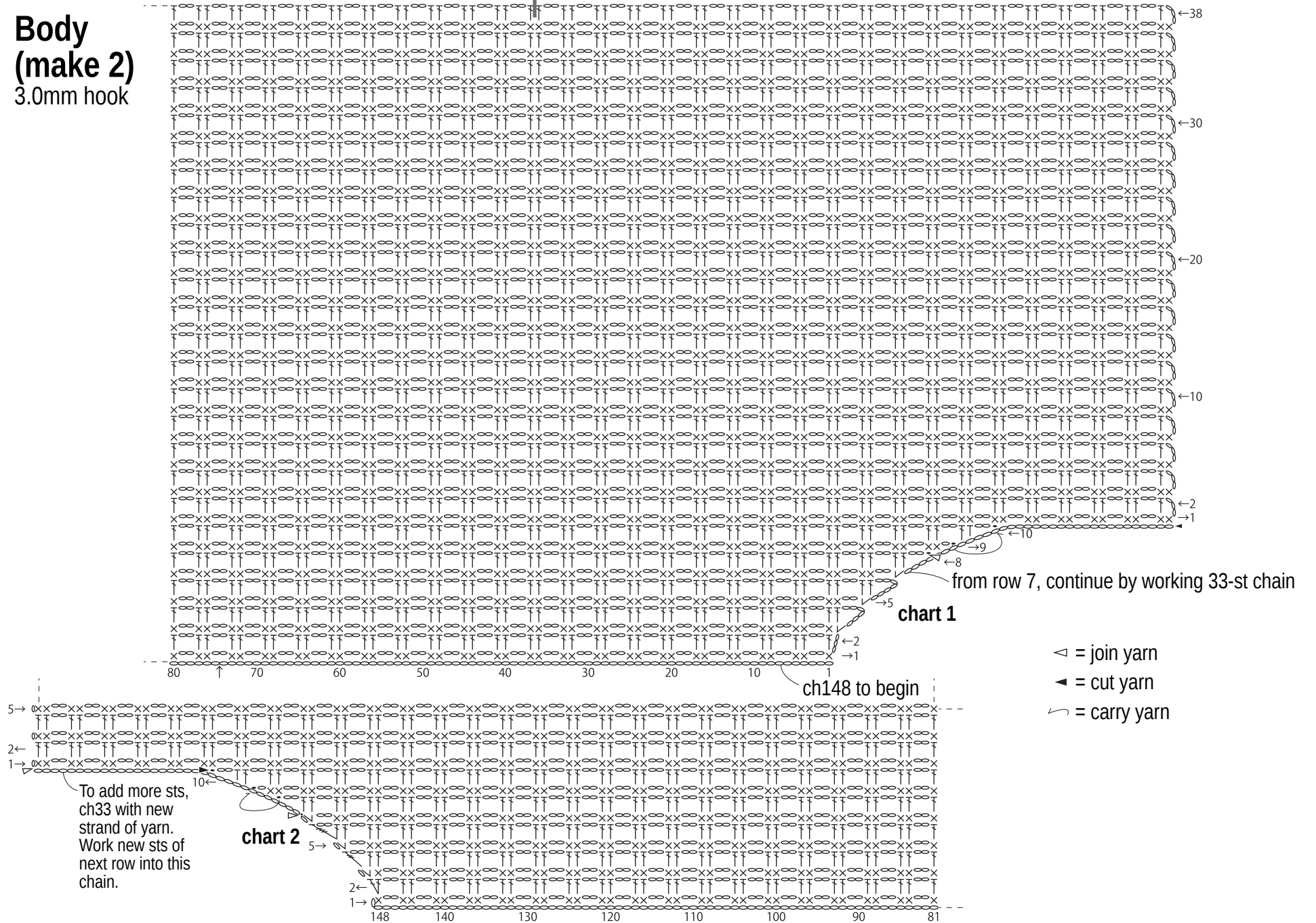
Finishing



*Make each tassel by folding 1 strand of yarn (30cm long) in two, then knotting in place.

**Body
(make 2)**
3.0mm hook

start of neckline opening



from row 7, continue by working 33-st chain

chart 1

- △ = join yarn
- ◻ = cut yarn
- ↷ = carry yarn

ch148 to begin

chart 2

To add more sts,
ch33 with new
strand of yarn.
Work new sts of
next row into this
chain.