

1224ve Casual Nep Vest



Suggested yarn:

- Pierrot Yarns Fantastic Magie [45% wool, 30% nylon, 25% silk; 77 yds/70m per 1.06 oz./ 30g skein]; color #03 colorful, 8 skeins [230g]

Tools/Notions:

- 3.3mm (approx. US 3) and 3.9mm (approx. US 6) knitting needles or sizes necessary to achieve gauge

Finished measurements:

- bust 90cm/35.43"
- cross back width 36cm/14.17"
- back length 53cm/20.87"

Gauge (10cm/4" square):

- pattern stitch: 19 sts and 32 rows

Gauge may vary according to individual knitting style. Change needle size if necessary to achieve gauge. Alternatively, rework pattern with your own gauge measurements.

Summary

Body: Cast on with long-tail cast-on method. Work in k1p1 ribbing, then work in pattern stitch.

Finishing: Seam shoulders with crochet slip stitch seam. Seam sides with mattress stitch. Pick up stitches around armholes and neckline, respectively; work edging in k1p1 ribbing in the round. Bind off in pattern.

Abbreviations:

BO = bind off

CO = cast on

k = knit

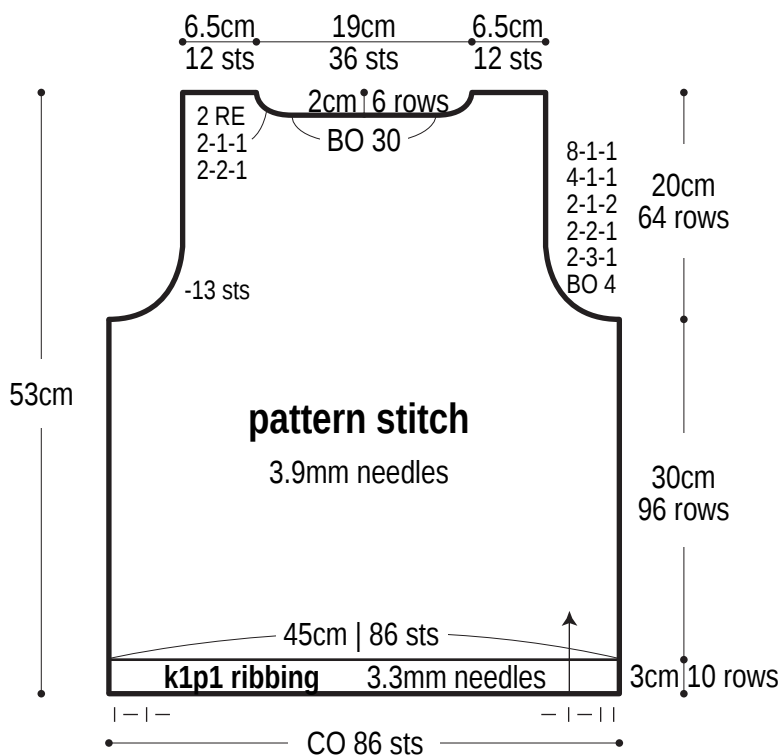
p = purl

PU = pick up

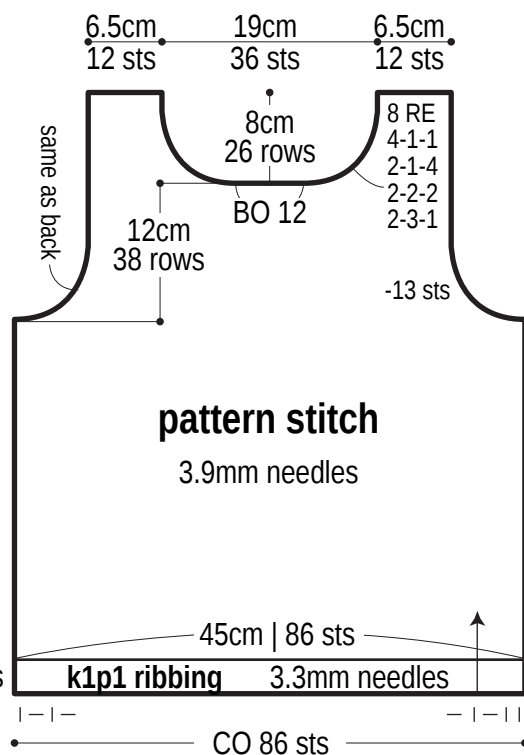
RE = row(s) even

#-#-# = rows-stitches-times

Back

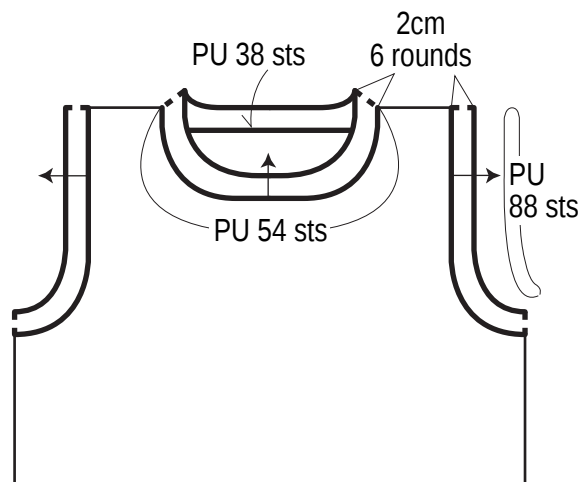


Front



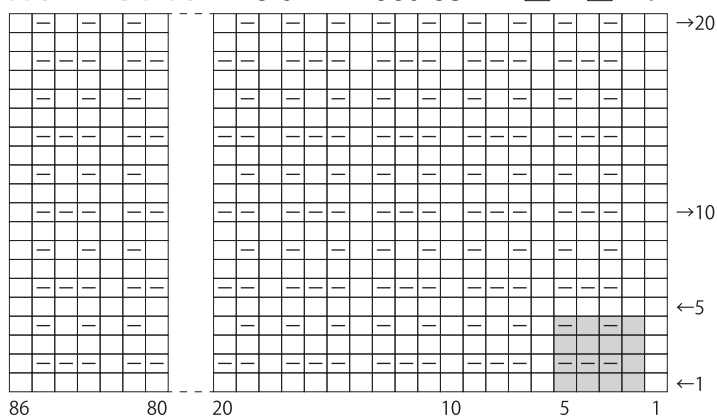
Finishing

k1p1 ribbing
3.3mm needles



Pattern stitch 3.9mm needles

□ = □ knit



■ = 4-st, 4-row repeat