

217s-05 Loose Safari Tunic



Suggested yarn:

- Pierrot Yarns Star Pochette [50% cotton, 50% merino wool; 131 yds/120m per 1.41 oz./40g skein]; color #103 military, 10 skeins [400g]

Tools/Notions:

- 2.5mm (approx. US B or C) crochet hook or size necessary to achieve gauge

Finished measurements:

- bust 116cm/34.65"
- center back neck-to-cuff 65cm/16.14"
- back length 70cm/19.29"

Gauge (10cm/4" square):

- pattern stitch: 23.5 sts and 12 rows
- single crochet (US): 22 sts and 30 rows

Gauge may vary according to individual crochet style. Change hook size if necessary to achieve gauge. Alternatively, rework pattern with your own gauge measurements.

Summary

✳️**Note:** Like all Japanese patterns, stitch counts given here for foundation chains do not include any chain sts needed for turning posts.

Body & sleeves: Work foundation chain to begin, then work in pattern stitch according to schematics.

Finishing: Seam shoulders with chain seam (alternating chain st and slip st as needed to maintain pattern). Seam sleeves to body with chain seam. Seam sides and sleeve undersides with chain seam (one seam per side of body). Work sc edging in the round along neckline, hem, and cuffs, respectively.

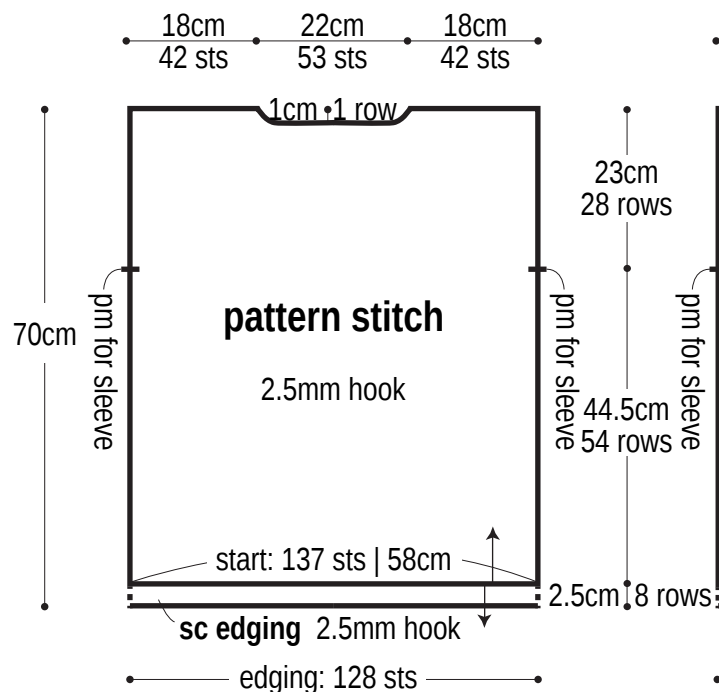
Abbreviations:

ch = chain

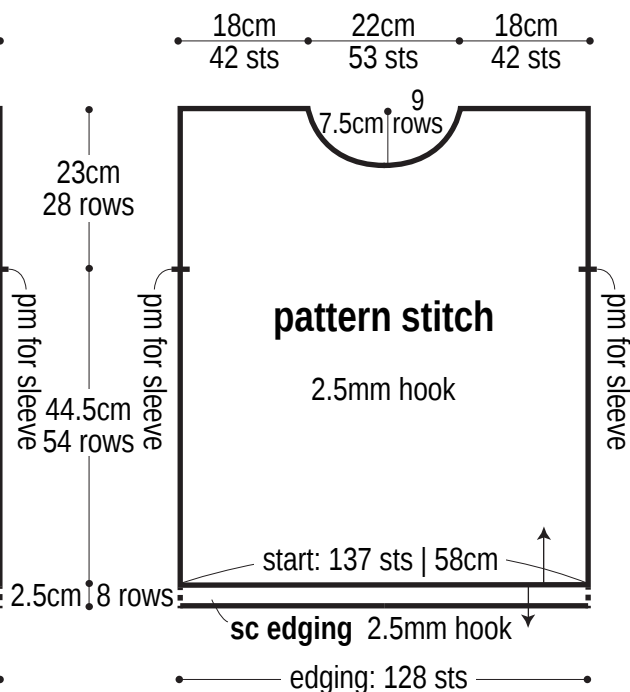
pm = place marker

sc = single crochet (US)

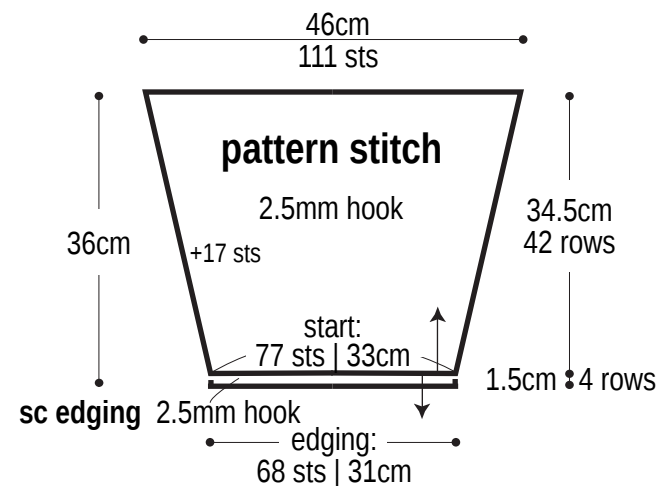
Back



Front

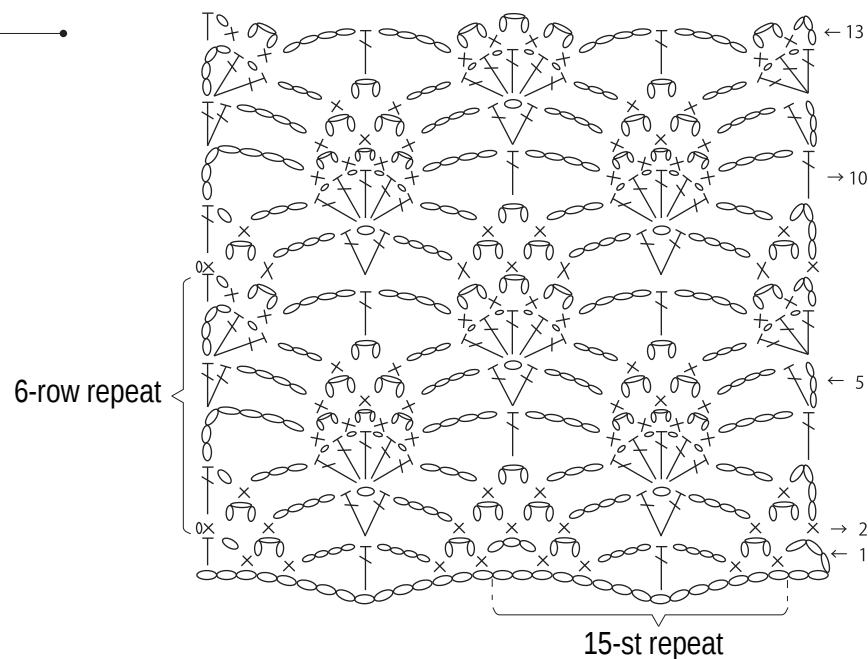


Sleeve

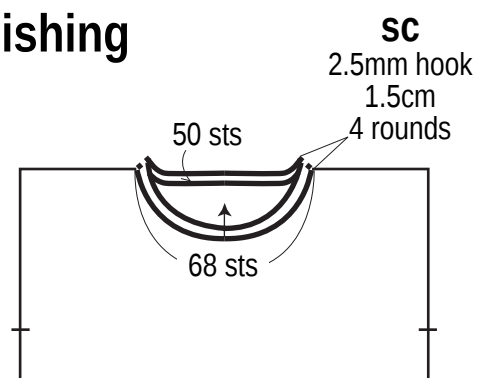


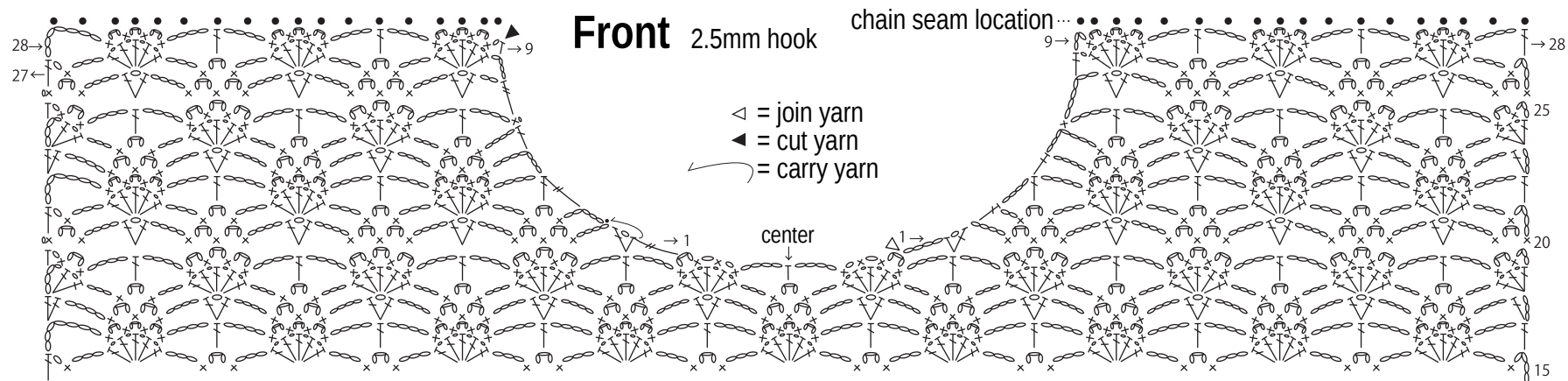
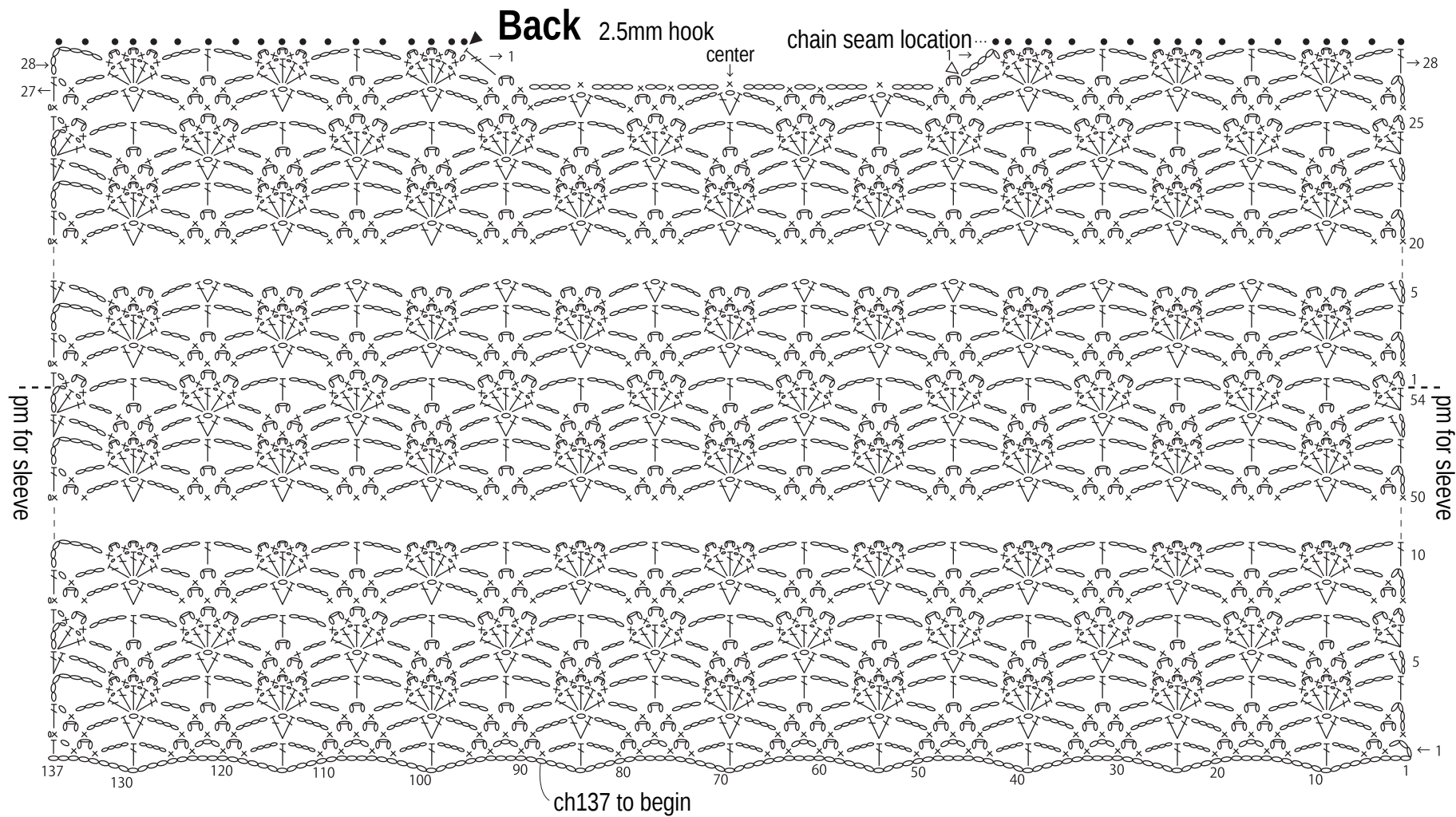
※Work hem and cuff edging in sc in the round.

Pattern stitch 2.5mm hook



Finishing





Sleeve
2.5mm hook

