

217s-04 Cable Stitch Sleeveless Top



Suggested yarn:

- Pierrot Yarns Pastel Organic [100% cotton; 77 yds/70m per 0.88 oz./25g skein]; color #57 rose pink, 12 skeins [300g]

Tools/Notions:

- 3.0mm (US 3) and 3.3mm (approx. US 4) knitting needles or sizes necessary to achieve gauge
- 2.3mm (approx. US B) crochet hook or size necessary to achieve gauge
- cable needle

Finished measurements:

- bust 88cm/34.65"
- back length 55cm/21.65"

Gauge (10cm/4" square):

- pattern stitch A: 26 sts and 33 rows
- pattern stitch B: 36.5 sts and 33 rows
- k2p2 ribbing: 26 sts and 37.5 rows

Gauge may vary according to individual knitting style. Change needle size if necessary to achieve gauge. Alternatively, rework pattern with your own gauge measurements.

Summary

Back: Cast on with long-tail cast-on method. Work in k2p2 ribbing and then pattern stitch A. Work decreases at raglan edges using fully fashioned decreases (1 st in from the edge).

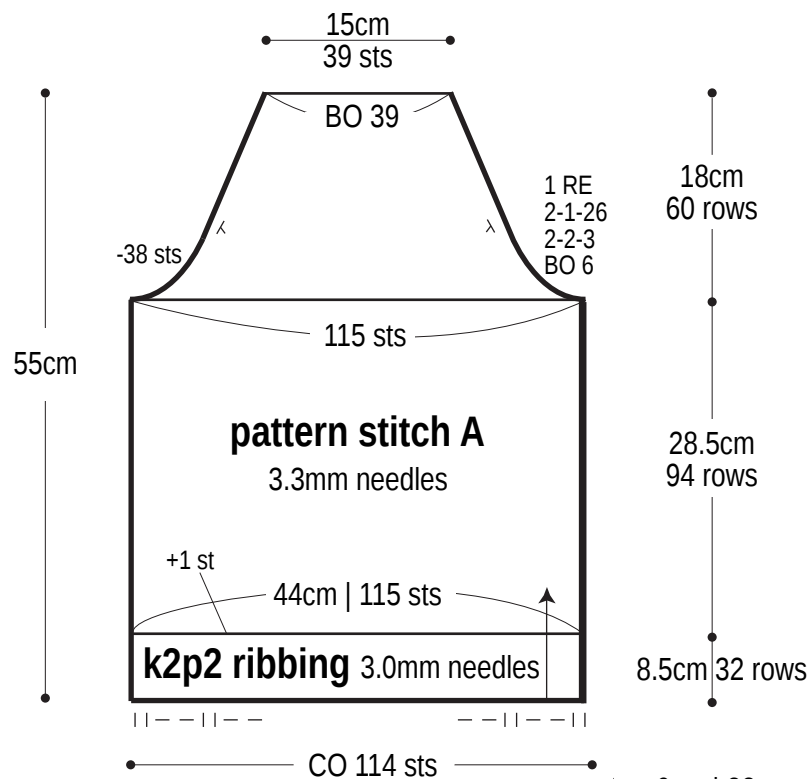
Front: Cast on as for back. Work in k2p2 ribbing. Continue in pattern stitches A and B.

Finishing: Seam sides with mattress stitch. Pick up stitches around armholes; work edging back-and-forth in rows of k2p2 ribbing. Using crochet hook, work a chain that joins front and back necklines together (1 chain per side). Pick up stitches from front & back necklines, including chain section; work collar in k2p2 ribbing in the round. Bind off in pattern.

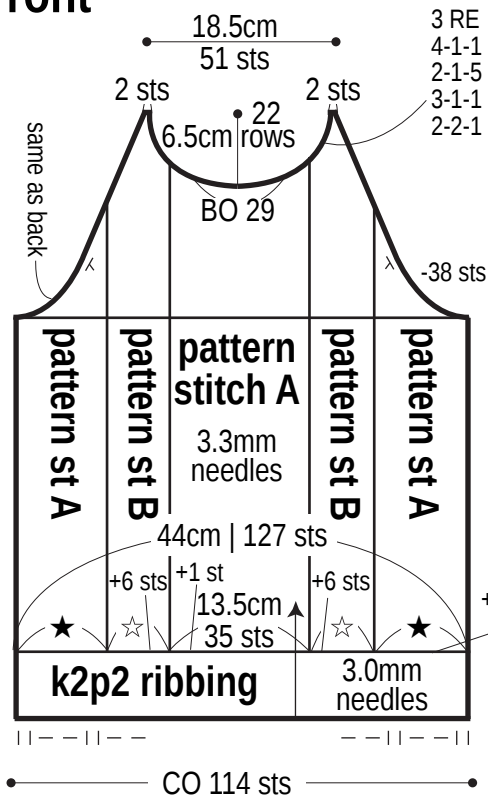
Abbreviations:

BO = bind off ch = crochet chain stitch CO = cast on k = knit p = purl PU = pick up RE = row(s) even #-#-# = rows-stitches-times

Back

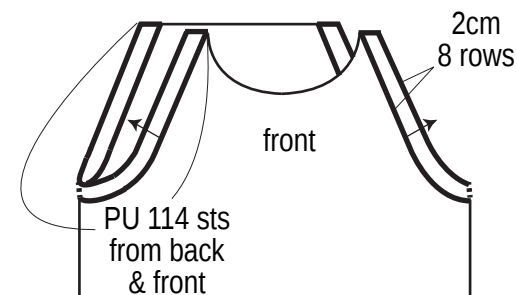


Front



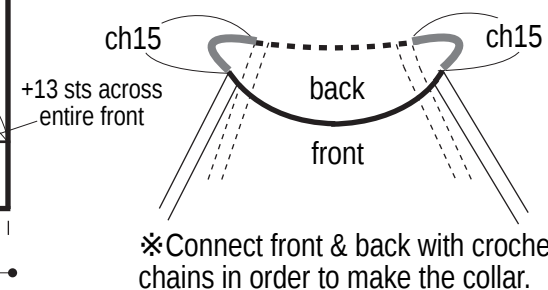
Armhole edging

k2p2 ribbing, 3.0mm needles

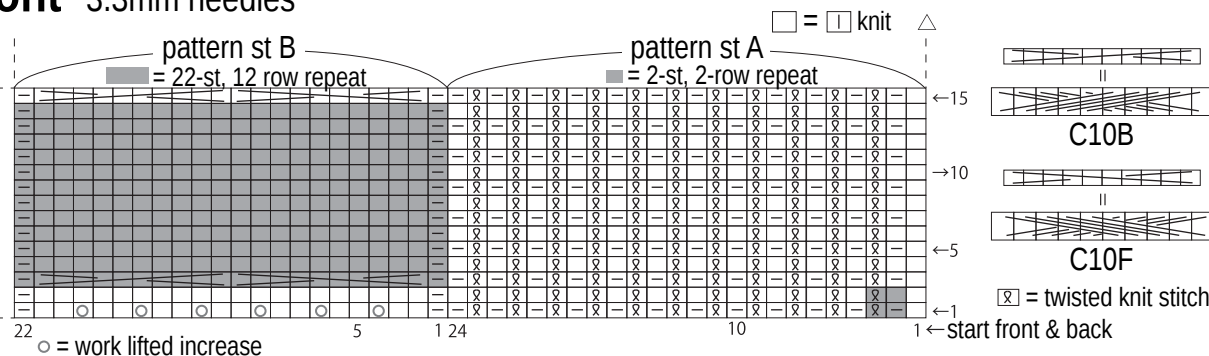


Neckline chain

2.3mm hook



Front 3.3mm needles



Collar k2p2 ribbing

