

z714-1 Cymbals Sweater



Suggested yarn:

- Keito-Zakka Stores Cymbals [56% acrylic, 23% wool, 21% polyester; 104 yds/95m per 1.41 oz./40g skein]; [250g]

Tools/Notions:

- 5.7mm (approx. US 9) & 6.3mm (approx. US 10½) straight knitting needles or sizes necessary to achieve gauge
- 5.7mm (approx. US 9) double-pointed knitting needles or size necessary to achieve gauge

Finished measurements:

- bust 103cm/40.55"
- cross back width 51cm/20.08"
- back length 69cm/27.17"
- sleeve length 43cm/16.93"

Gauge (10cm/4" square):

- stockinette stitch: 12 sts and 14 rows

Gauge may vary according to individual knitting style. Change needle size if necessary to achieve gauge. Alternatively, rework pattern with your own gauge measurements.

Summary

Body: Cast on with crochet provisional cast-on method. Work in stockinette stitch. Shape neckline by binding off stitches and working decreases at edges as indicated.

Sleeve (make 2): Cast on with crochet provisional cast-on method. Work in stockinette stitch with a central panel of cables.

Finishing: Seam shoulders with crochet slip stitch seam. Pick up stitches around neckline; work collar in k2p2 ribbing in the round. Bind off in pattern. Remove provisional cast-on edge at hem and cuffs, respectively. Work edging in k2p2 ribbing, then bind off in pattern. Seam sleeves to body with crochet slip stitch seam. Seam sides and sleeve undersides with mattress stitch in one continuous seam per side of body, stopping where start of side slits are marked on schematic.

Abbreviations:

BO = bind off

CO = cast on

k = knit

p = purl

pm = place marker

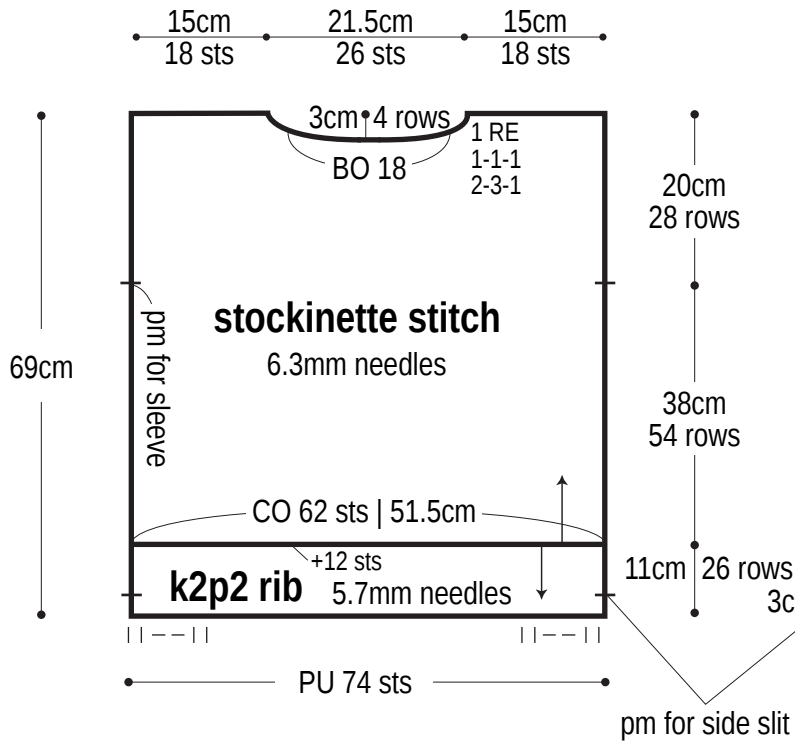
PU = pick up

RE = row(s) even

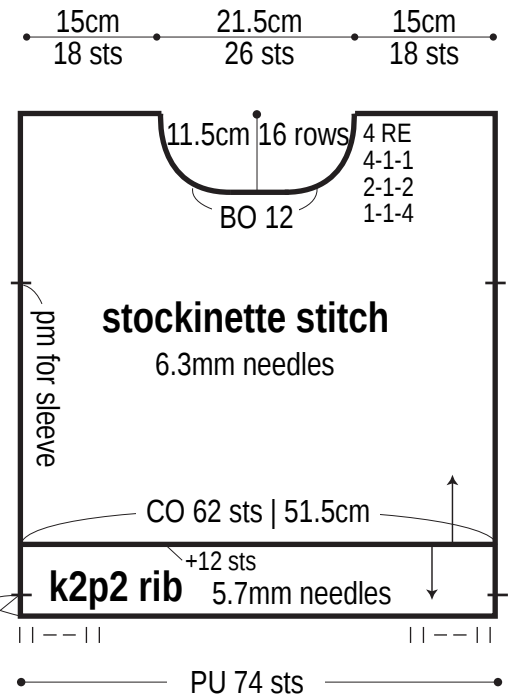
st st = stockinette stitch

#-#-# = rows-stitches-times

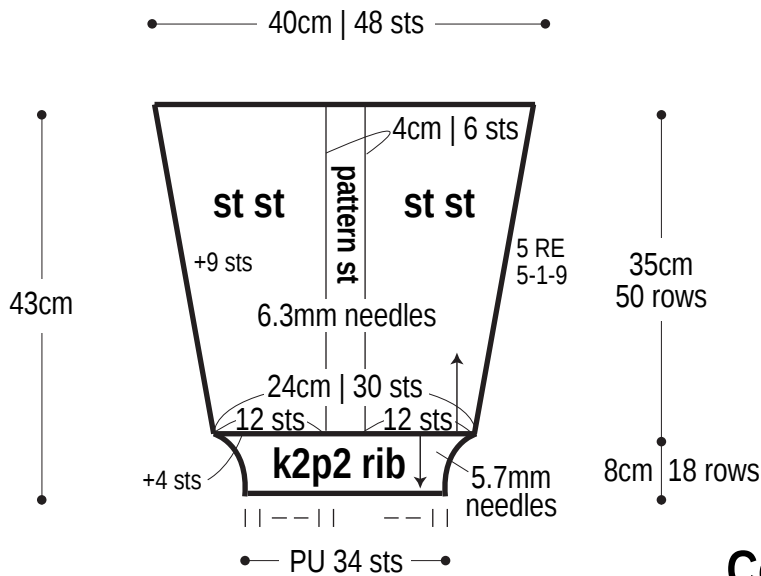
Back



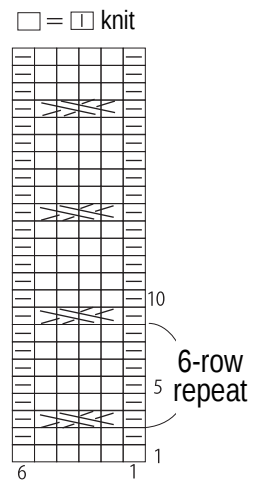
Front



Sleeve



Pattern stitch



Collar: k2p2 ribbing

