

# tricot10-1 Dice Sweater



## Suggested yarn:

- Keito-Zakka Stores Fuwari [82% acrylic, 12% mohair; 71 yds/65m per 1.41 oz./40g skein];
  - color #14 beige, 7 skeins [260g]

## Tools/Notions:

- 6.6mm (approx. US 10.5) and 7.0mm (no US equivalent) knitting needles or sizes necessary to achieve gauge

## Finished measurements:

- bust 90cm/35.43"
- center back neck-to-cuff 75cm/29.53"
- back length 53cm/20.87"

## Gauge (10cm/4" square):

- pattern stitch (with 7.0mm needles): 13 sts and 17 rows
- k1p1 ribbing (with 6.6mm needles): 12 sts and 16 rows

Gauge may vary according to individual knitting style. Change needle size if necessary to achieve gauge. Alternatively, rework pattern with your own gauge measurements.

## Summary

**Front & back:** Cast on with long-tail cast-on method. Work in pattern stitch. Shape raglan edges by working fully fashioned decreases 3 stitches in from the edge.

**Sleeve:** Begin as for body. Work in k1p1 ribbing, then continue in pattern stitch. Shape raglan edges as for body.

**Finishing:** Seam underarm gusset with Kitchener stitch. Seam raglan edges with mattress stitch. Pick up stitches around neckline; work collar in k1p1 ribbing in the round. Bind off in pattern. Seam sides and sleeve in one continuous mattress stitch seam (per side).

## Abbreviations:

BO = bind off

CO = cast on

k = knit

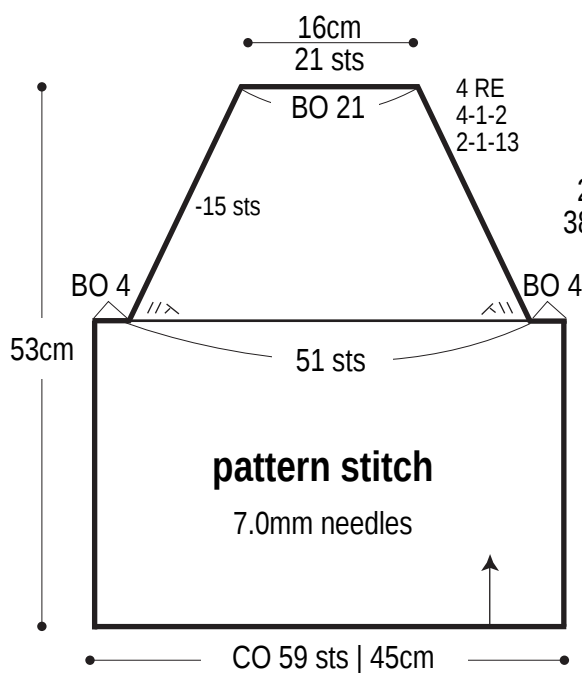
p = purl

PU = pick up

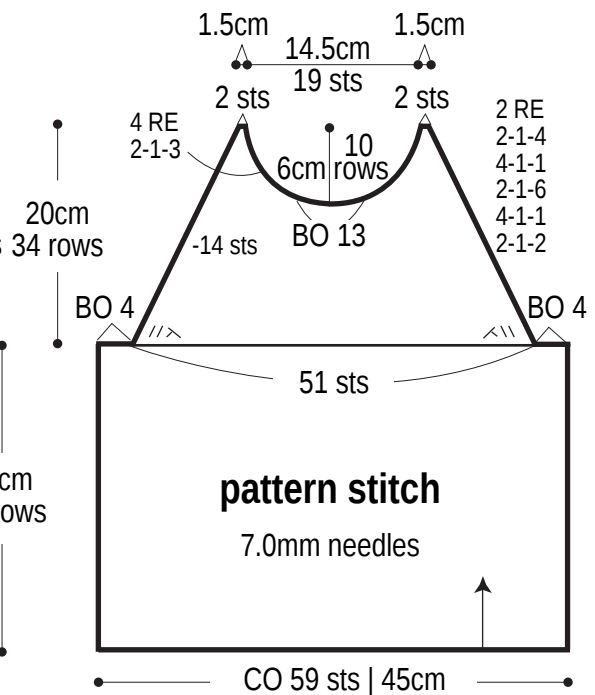
RE = row(s) even

#-#-# = rows-stitches-times

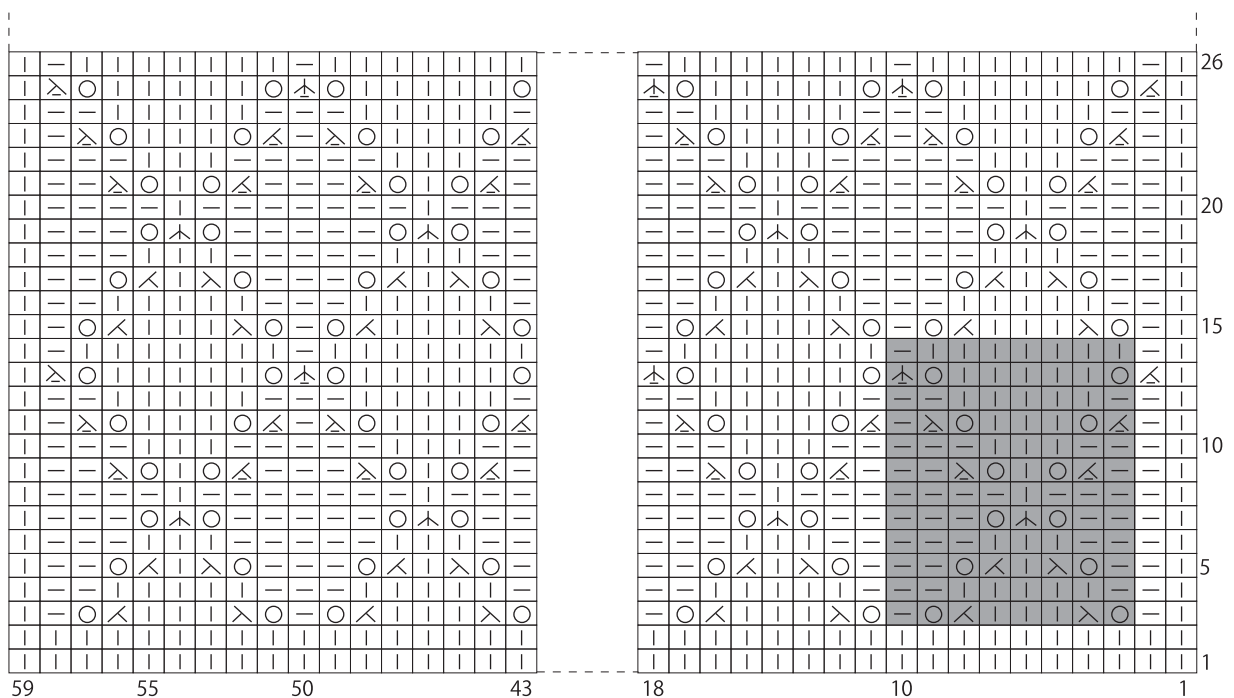
## Back



## Front

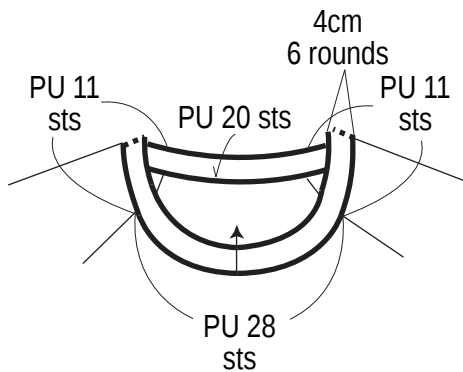


## Pattern stitch 7.0mm needles

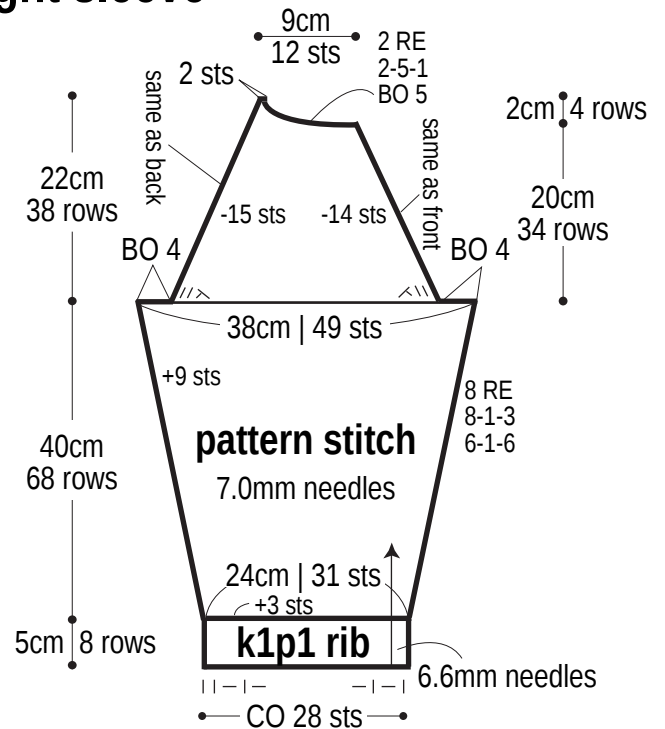


## Collar

k1p1 ribbing, 6.6mm needles

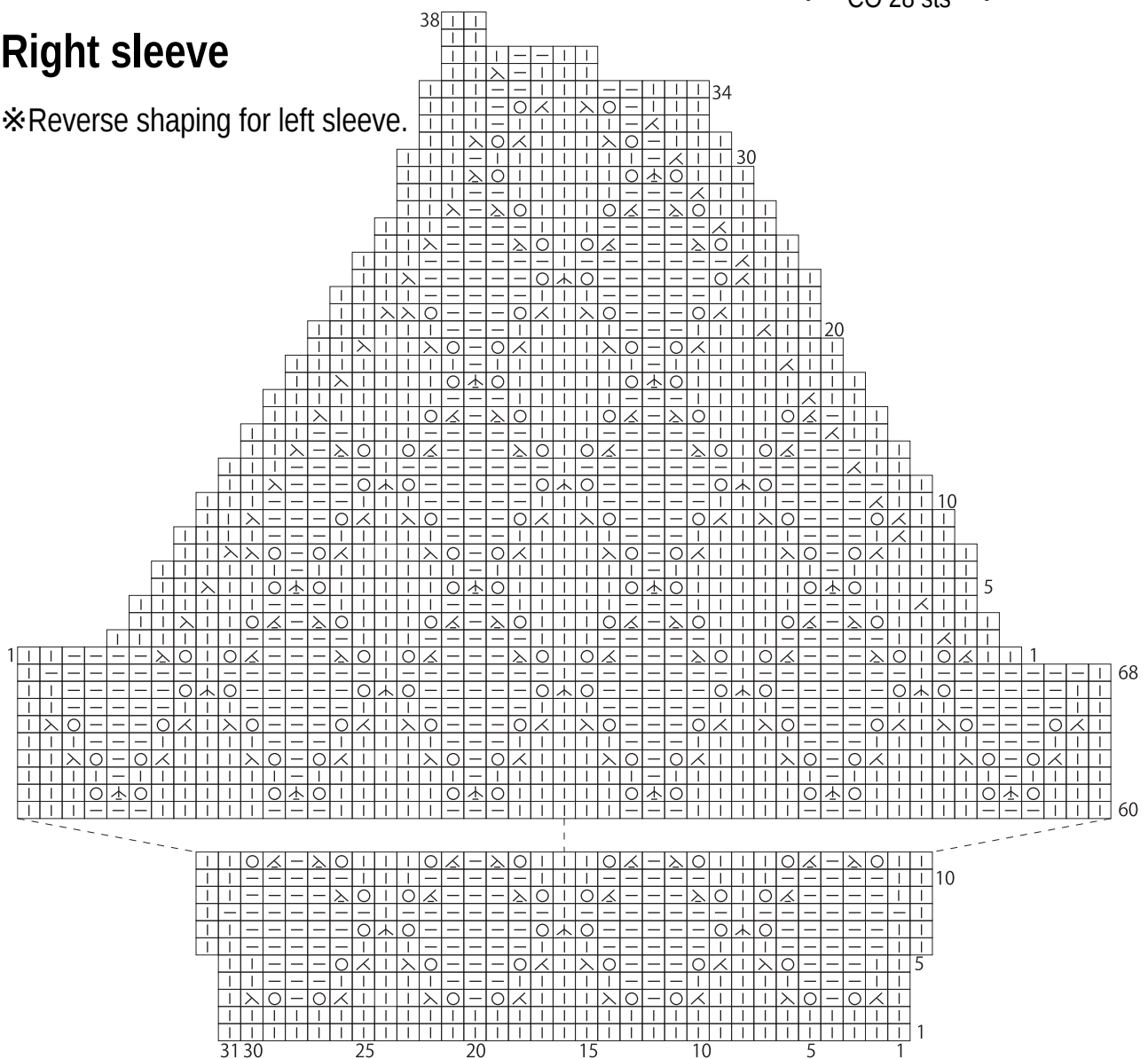


## Right sleeve

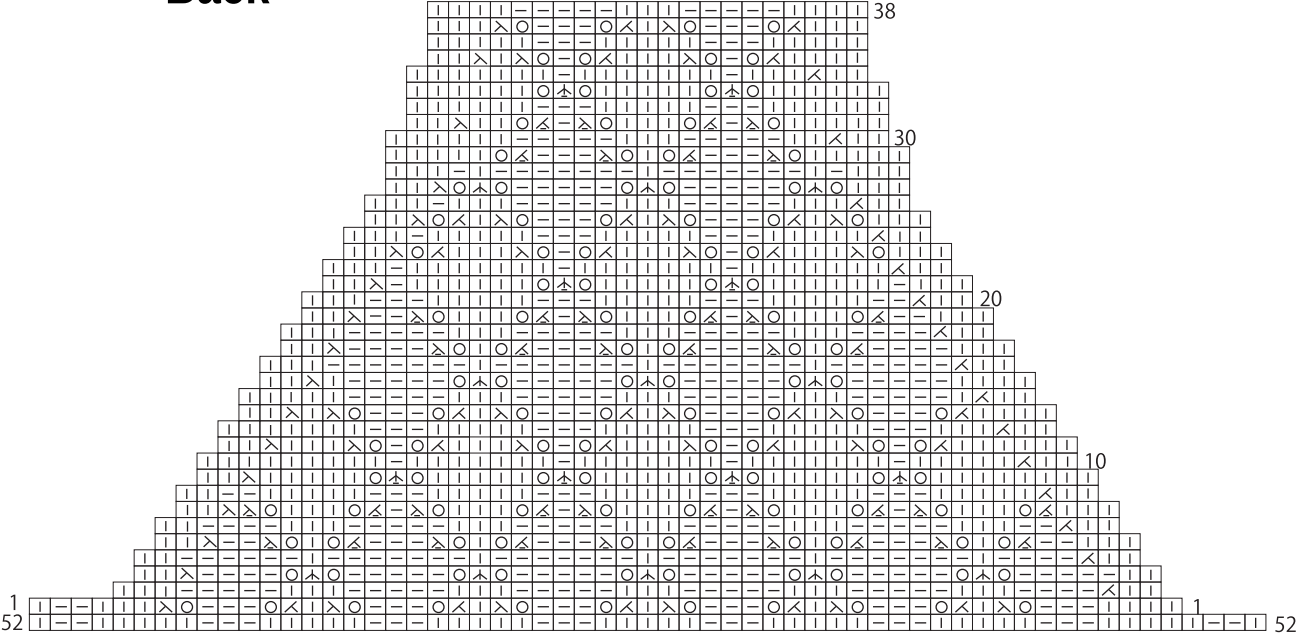


## Right sleeve

※Reverse shaping for left sleeve.



Back



Front

