

26-31 Cloche



Suggested yarn:

- Pierrot Yarns Cotton Neat [100% cotton; 58 yds/53m per 1.41 oz./40g skein];
 - color #601 ivory, 4 skeins [130g]

Tools/Notions:

- 4.0mm (US G), 5.0mm (US H), and 6.0mm (US J) crochet hook or sizes necessary to achieve gauge

Finished measurements:

- head circumference 58cm/22.83"
- head depth 24.5cm/9.65"

Gauge (10cm/4" square):

- single crochet (US): 13.5 sts and 15 rounds
- pattern stitch: 13.5 sts and 7 rounds

Gauge may vary according to individual crochet style. Change hook size if necessary to achieve gauge. Alternatively, rework pattern with your own gauge measurements.

Summary

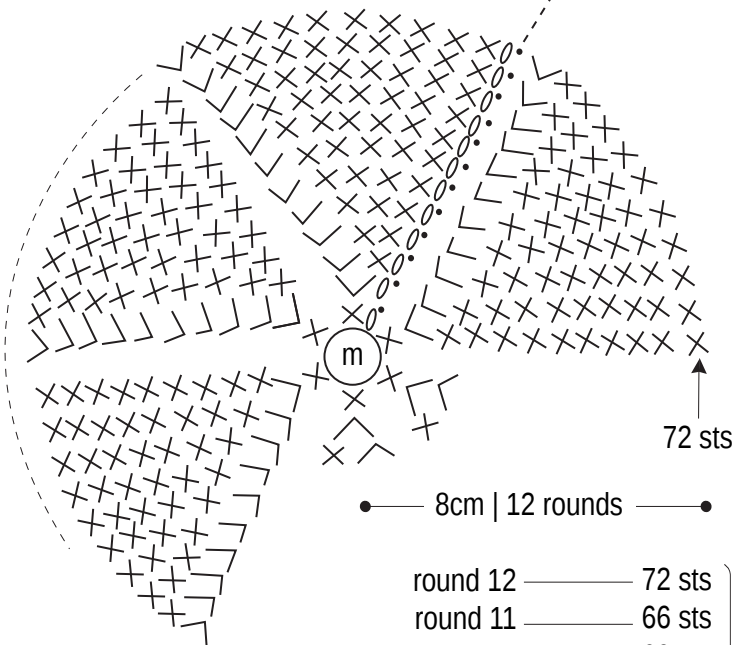
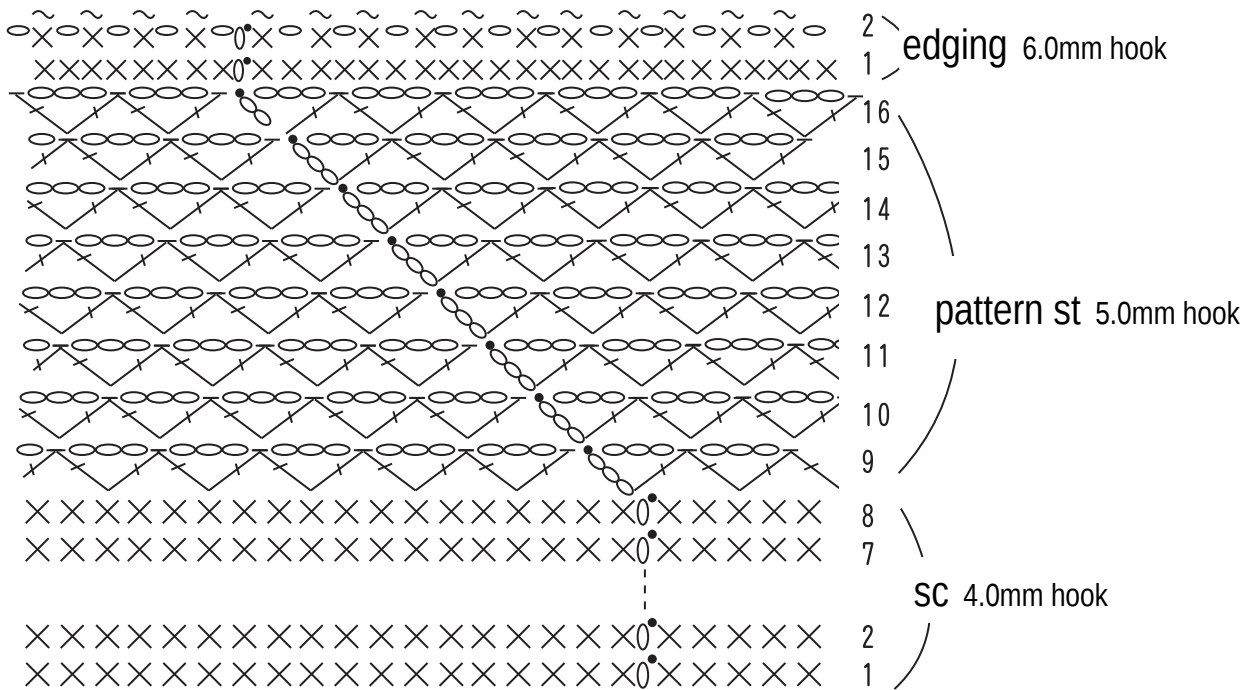
❖**Note:** Like all Japanese patterns, stitch counts given here for foundation chains do not include any chain sts needed for turning posts.

Hat is worked from the top down. Work magic ring to begin, then work 12 rounds of sc according to chart, increasing as indicated. Work 8 rounds of side even (that is, no increases or decreases), then begin working increases in pattern stitch on round 9. Work rounds 10-16 even in pattern stitch. For edging, work 1 round of sc and 1 round of crab stitch.

Abbreviations:

ch = chain
m = magic ring/circle
rep = pattern repeat(s)
sc = single crochet (US)

Pattern stitch

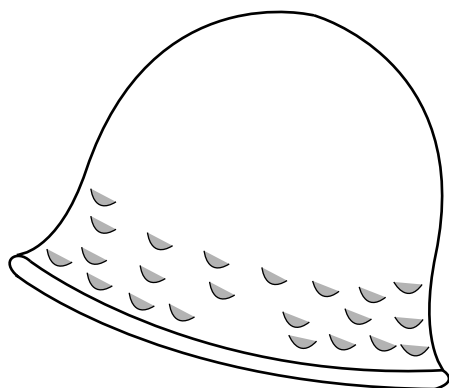


Top of hat
sc, 4.0mm hook

● — 8cm | 12 rounds — ●

round 12	72 sts	} increase 6 sts per round
round 11	66 sts	
round 10	60 sts	
round 9	54 sts	
round 8	48 sts	
round 7	42 sts	
round 6	36 sts	
round 5	30 sts	
round 4	24 sts	
round 3	18 sts	
round 2	12 sts	
round 1	6 sts	

Finished item



Cloche schematic

