

# 217ss-05 French Linen Skirt



## Suggested yarn:

- Pierrot Yarns Pont du Gard [100% linen; 188 yds/172m per 1.41 oz./40g skein];
  - small: color #10 naturel, 7 skeins [270g]
  - medium: color #10 naturel, 9 skeins [350g]

## Tools/Notions:

- 2.0mm (US steel hook #4) and 2.3mm (approx. US B) crochet hook or size necessary to achieve gauge
- small: elastic band 3cm/1.18" x 72cm/28.35"
- medium: elastic band 3cm/1.18" x 78cm/30.71"

## Finished measurements:

- |                               |                                |
|-------------------------------|--------------------------------|
| • small:                      | • medium:                      |
| • skirt length 52.5cm/20.67"  | • skirt length 55.5cm/21.85"   |
| • waist 70cm/27.56"           | • waist 76cm/29.92"            |
| • hip measurement 96cm/37.80" | • hip measurement 112cm/44.09" |

## Gauge (10cm/4" square):

- pattern stitch (with 2.0mm hook): 32.5 sts and 17 rows
- pattern stitch (with 2.3mm hook): 30 sts and 16 rows
- double crochet (US) (with 2.3mm hook): 29 sts and 12 rows

*Gauge may vary according to individual crochet style. Change hook size if necessary to achieve gauge. Alternatively, rework pattern with your own gauge measurements.*

## Summary

✳️**Note:** Like all Japanese patterns, stitch counts given here for foundation chains do not include any chain sts needed for turning posts.

**Skirt (make 2):** Work foundation chain to begin. Work in pattern stitch, changing hook size where indicated to adjust gauge. With right sides facing each other, seam the two skirt pieces together with chain seam (alternating chain st and slip st as needed to maintain pattern).

**Waistband:** Starting by working into bind-off row of skirt, work waistband in the round according to chart. Fold waistband to inside as indicated in finishing schematic. Tack down with whipstitch, leaving an opening unseamed for insertion of elastic. Thread elastic through waistband, then sew ends together with 2cm/0.79" overlap. Whipstitch remaining opening in waistband.

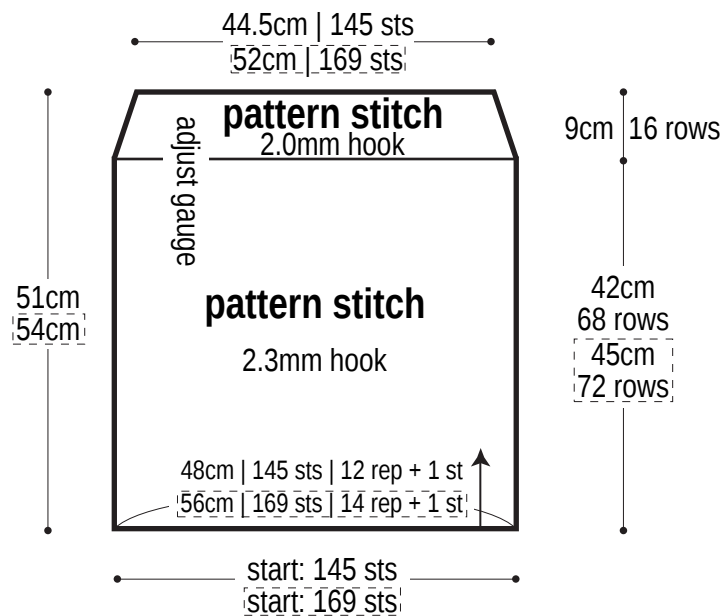
**Hem:** Work 6 rounds of edging along hem edge (working first round into foundation chain of skirt body).

## Abbreviations:

ch = chain      dc = double crochet (US)      rep = pattern repeat(s)      RS = right side      sc = single crochet (US)      WS = wrong side

# Skirt (make 2)

2.0 & 2.3mm hooks

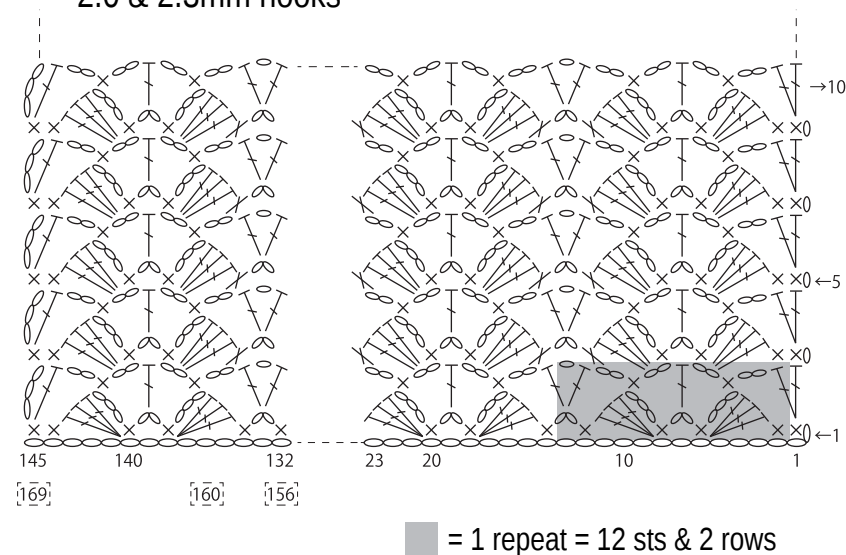


[ ] = size medium

※Where only one set of instructions is given, it refers to both sizes.

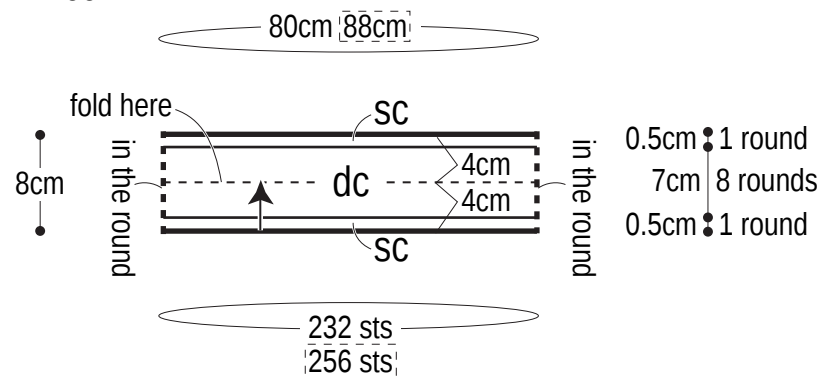
## Pattern stitch

2.0 & 2.3mm hooks

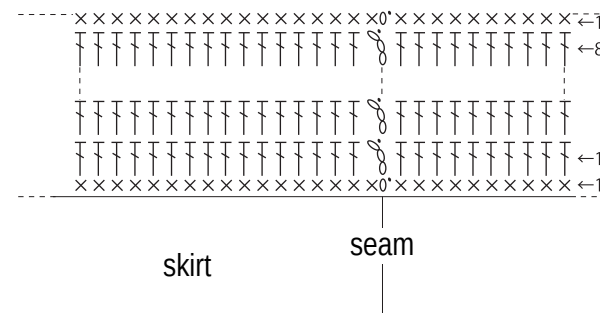


## Waistband

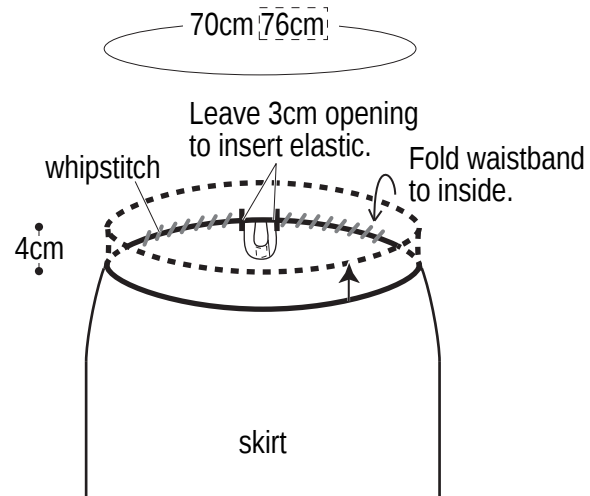
2.3mm hook



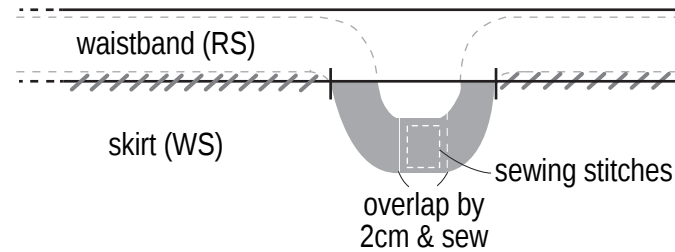
## Waistband chart 2.3mm hook



## Finishing 2.3mm hook



## How to insert & sew elastic



## Hem edging 2.3mm hook

