

# 217ss-04 Diamond Sweater



## Suggested yarn:

- Pierrot Yarns Brise [69% rayon, 20% ramie, 11% polyester; 98 yds/90m per 1.06 oz./30g skein];
  - color #01 yellow ocher, 12 skeins [350g]
  - color #06 green blue, 1 skein [20g]

## Tools/Notions:

- 3.6mm (approx. US 5) and 3.9mm (approx. US 6) knitting needles or sizes necessary to achieve gauge

## Finished measurements:

- bust 92cm/36.22"
- cross back width 40cm/15.75"
- back length 53cm/20.87"
- sleeve length 34cm/13.39"

## Gauge (10cm/4" square):

- stockinette stitch: 18 sts and 27 rows
- k1p1 ribbing: 21 sts and 32 rows

Gauge may vary according to individual knitting style. Change needle size if necessary to achieve gauge. Alternatively, rework pattern with your own gauge measurements.

## Summary

✿**Note:** Entire garment worked with 2 strands of yarn held together.

**Body:** Cast on with long-tail cast-on method. Work in k1p1 ribbing and pattern stitch according to schematics.

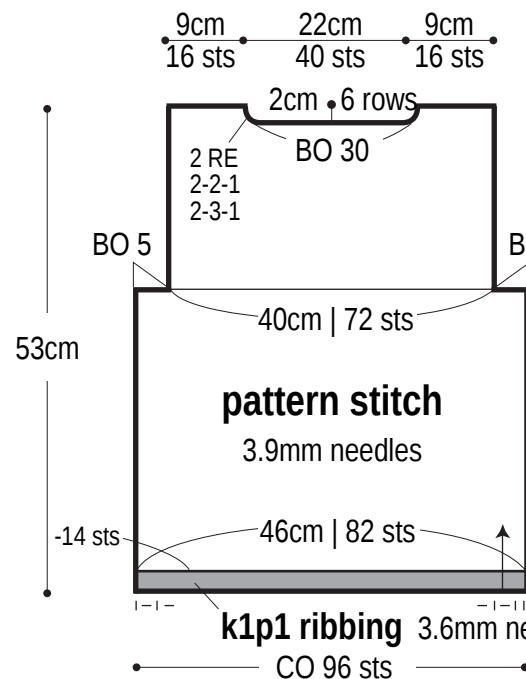
**Sleeve:** Cast on as for body. Work in k1p1 ribbing and pattern stitch (left sleeve) or stockinette stitch (right sleeve) according to schematics. Shape sides of sleeves using lifted increase.

**Finishing:** Seam sleeves to body using crochet slip stitch seam. Seam underarm gusset with stitches-to-rows mattress stitch. On each side of body, seam side and sleeve seam with one continuous mattress stitch seam. Pick up stitches around neckline; work collar in k1p1 ribbing in the round. Bind off in pattern.

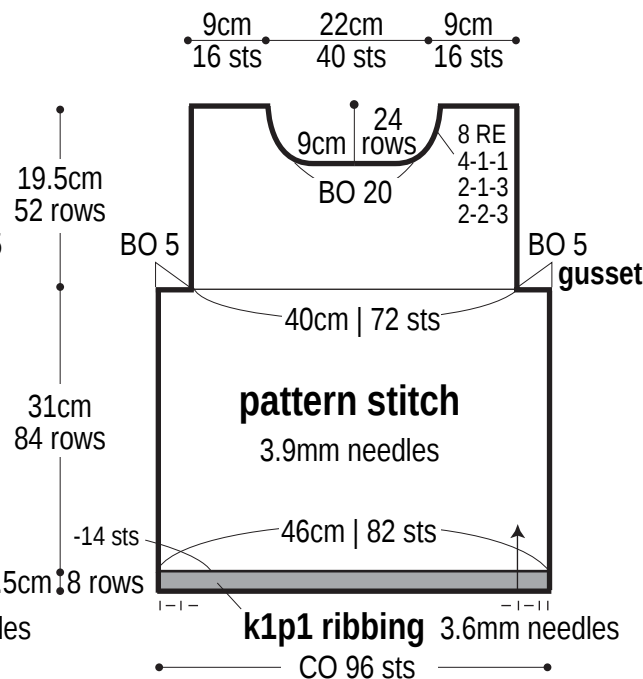
## Abbreviations:

BO = bind off      CO = cast on      k = knit      p = purl      pm = place marker      PU = pick up      RE = row(s) even      #-#-# = rows-stitches-times

## Back

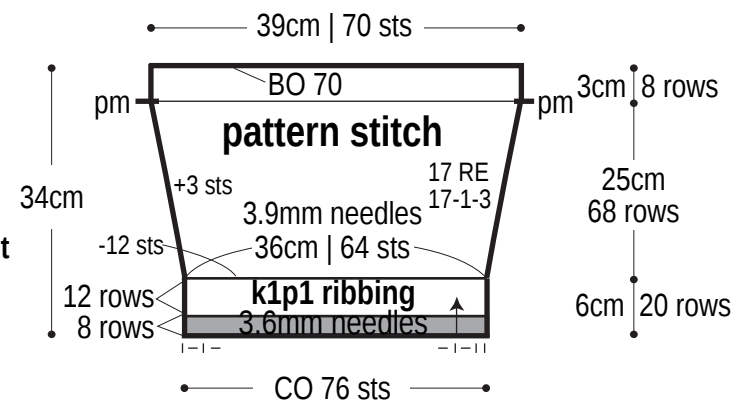


# Front



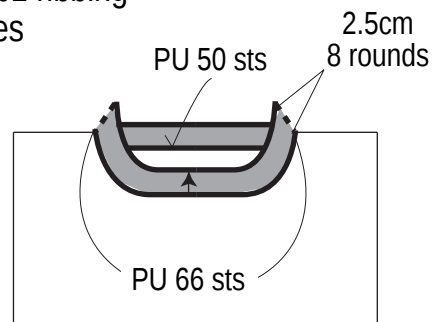
■ = color #06 green blue  
※Elsewhere, use #01 yellow ocher.

## Left sleeve

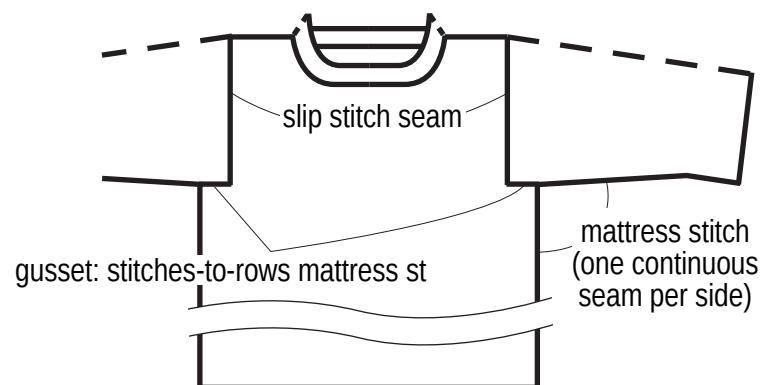


✳️ Work right sleeve in ribbing and stockinette stitch instead of ribbing and pattern stitch.

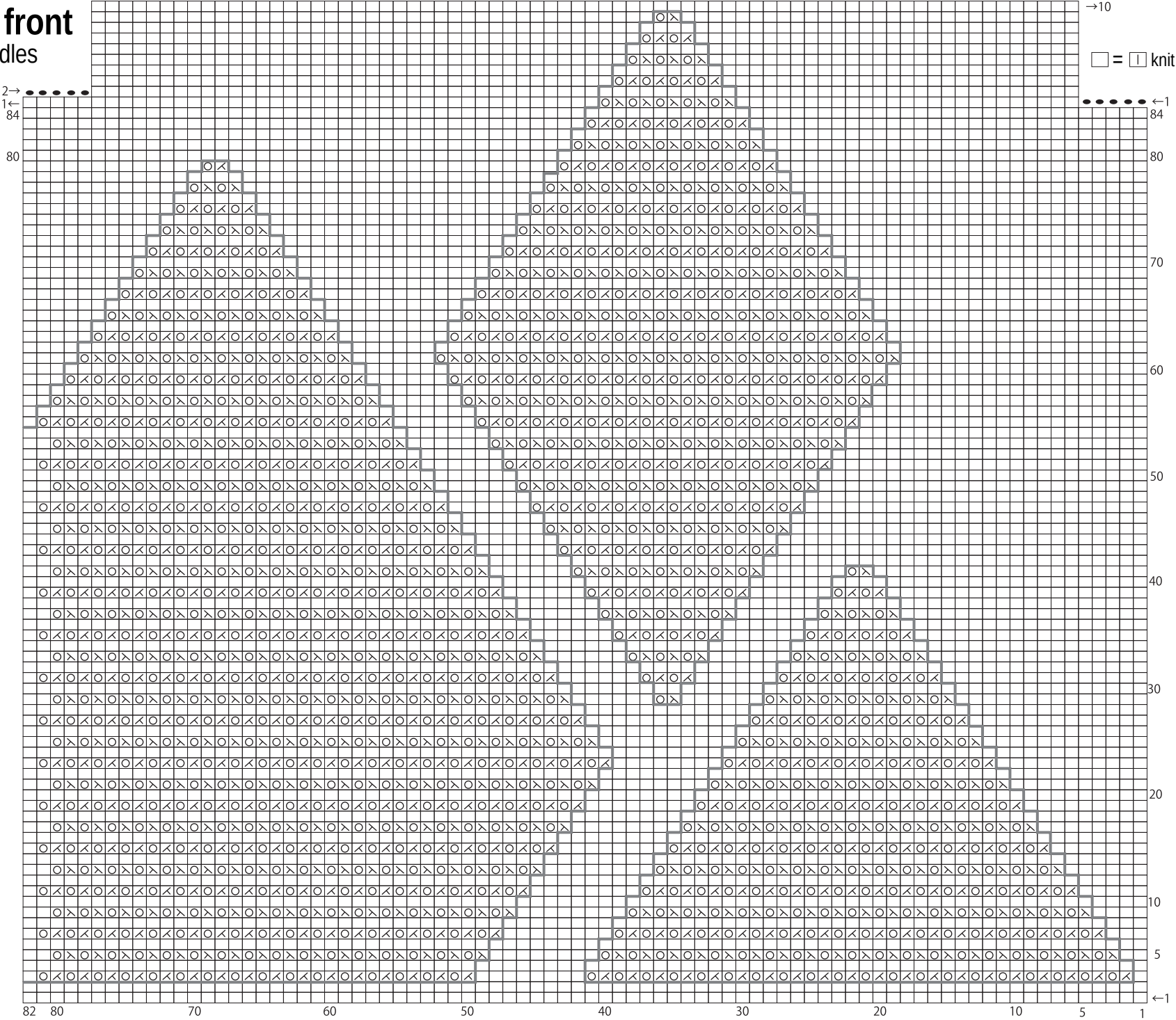
**Collar:** k1p1 ribbing  
3.6mm needles



## Finishing

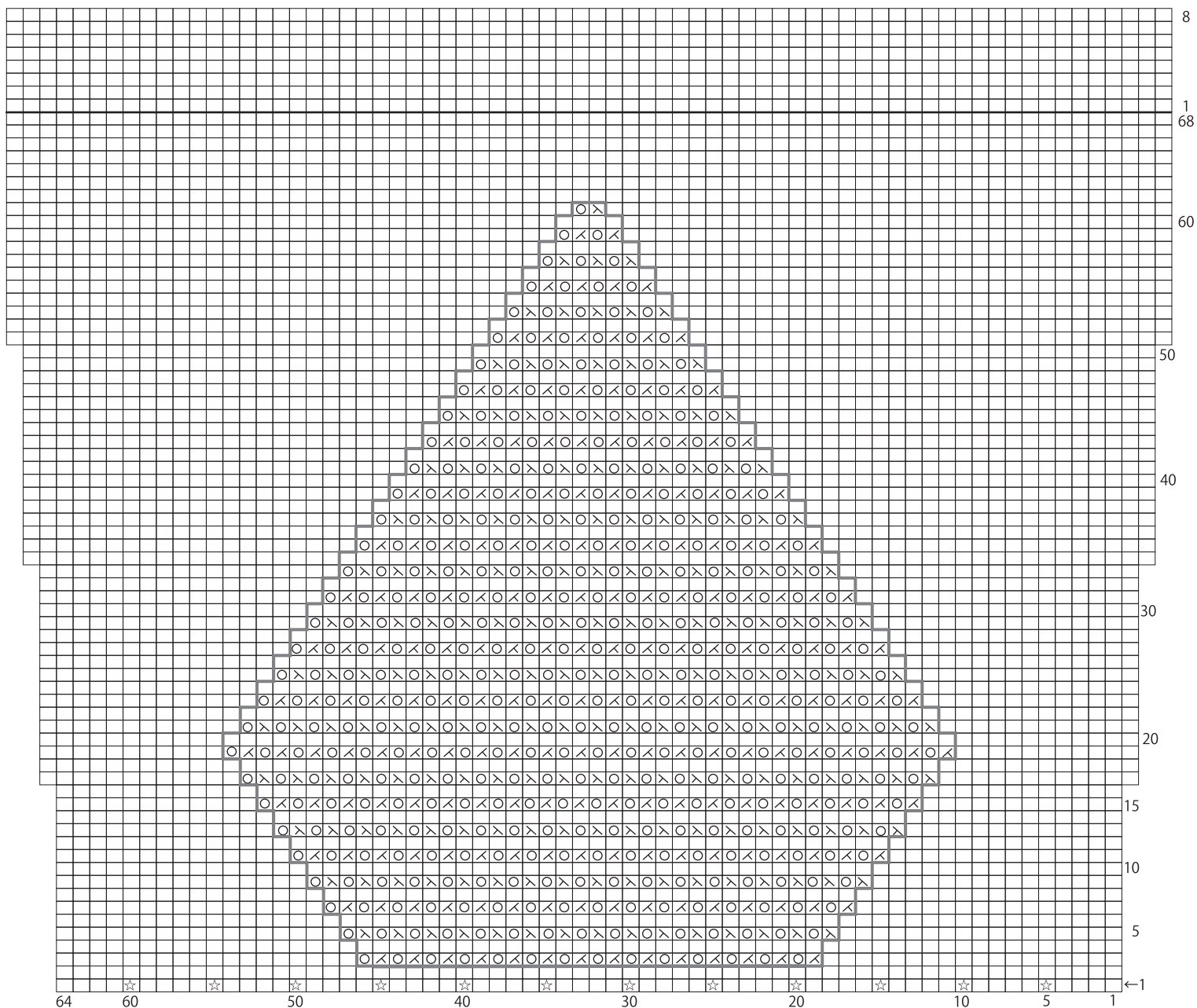


Back & front  
3.9mm needles



# Left sleeve 3.9mm needles

□ = □ knit



※In each of 12 places marked with ☆, k2tog.