

29-210-64 Baby Alpaca Poncho



Suggested yarn:

- Pierrot Yarns Soft Baby Alpaca Namibuto [100% alpaca; 85 yds/78m per 1.41 oz./40g skein]; color #75 purple, 12 skeins [460g]

Tools/Notions:

- 3.9mm (approx. US 6) and 4.2mm (approx. US 6) knitting needles or sizes necessary to achieve gauge
- 3.0mm (approx. US C or D) crochet hook or size necessary to achieve gauge

Finished measurements:

- back length 72cm/28.35"

Gauge (10cm/4" square):

- pattern stitch: 20 sts and 31.5 rows

Gauge may vary according to individual knitting style. Change needle size if necessary to achieve gauge. Alternatively, rework pattern with your own gauge measurements.

Summary

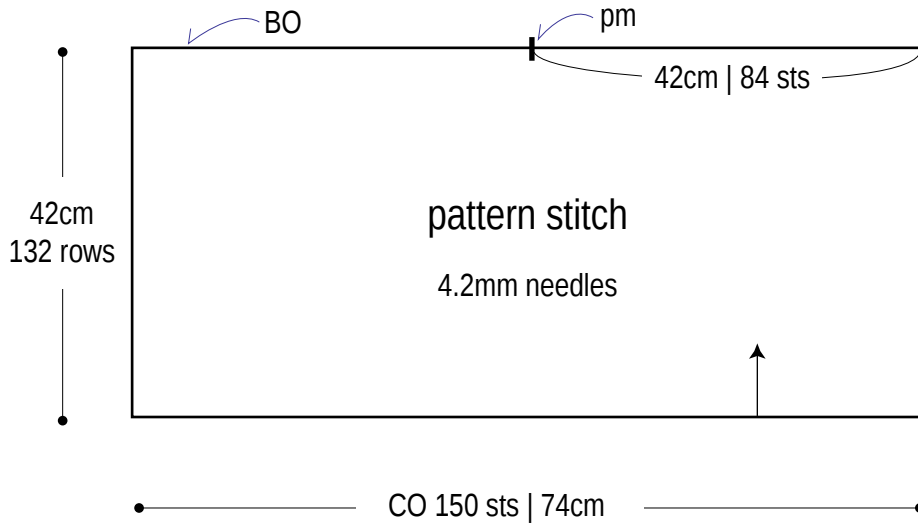
Body (make 2): Cast on with long-tail cast-on method. Work in pattern stitch. Bind off. Place marker 84 sts from edge as shown on schematic.

Finishing: Seam 2 body pieces together using stitches-to-rows mattress stitch. For collar, pick up stitches and work k2p2 ribbing in the round. Bind off loosely. Crochet edging around hem.

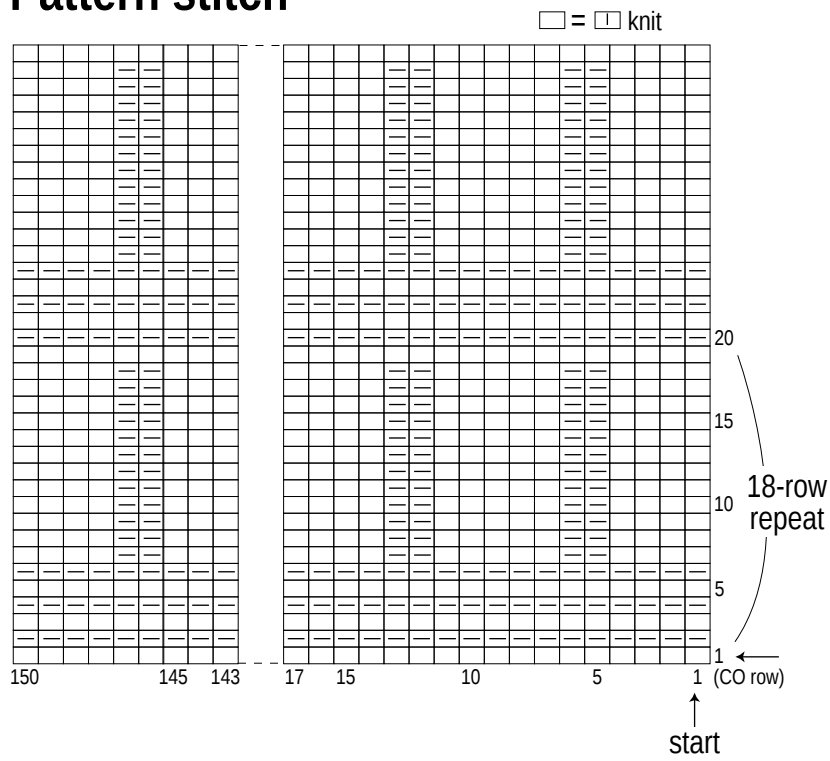
Abbreviations:

BO = bind off
CO = cast on
pm = place marker
PU = pick up
rep = pattern repeat(s)

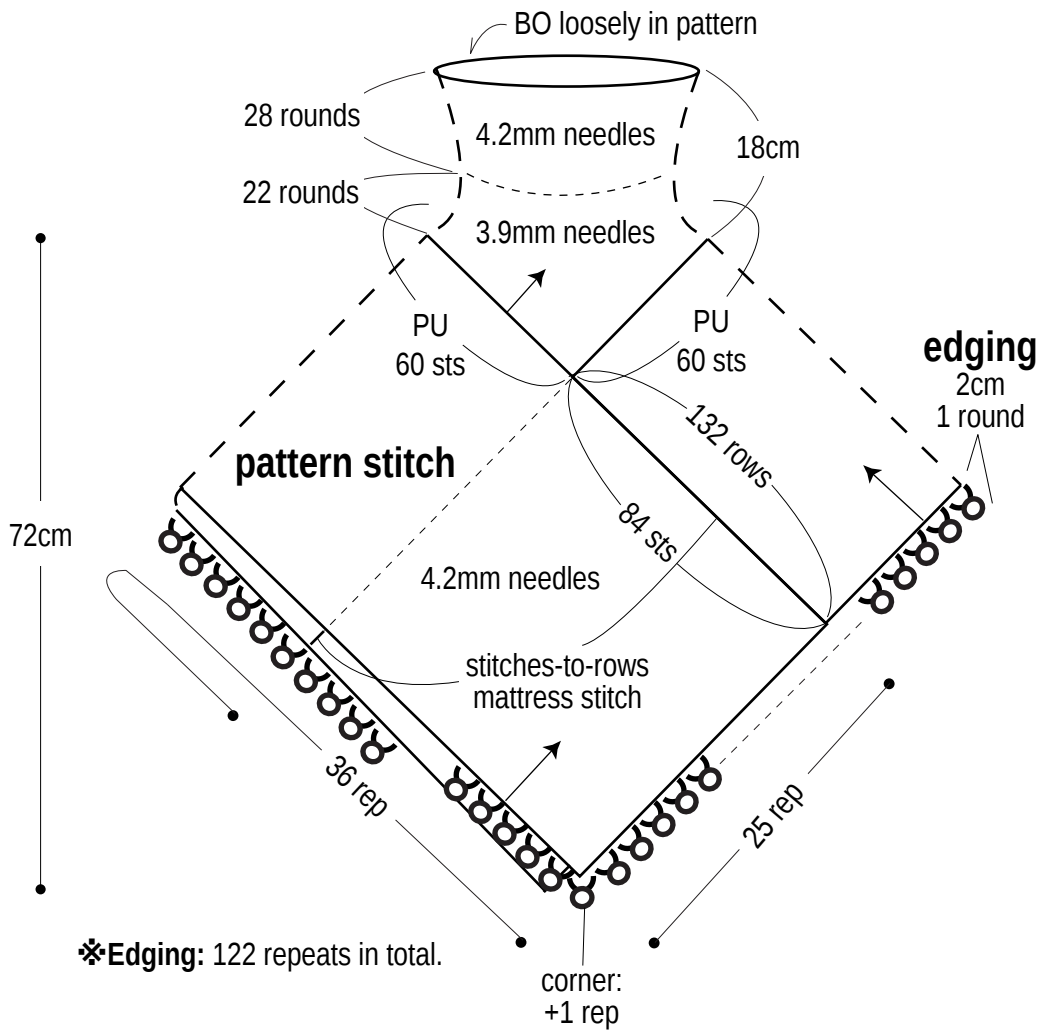
Body (make 2)



Pattern stitch



Finishing



Edging 3.0mm hook

✳️ Work somewhat loosely.

