

# 216w-08 Long Shawl Cardigan



## Suggested yarn:

- Pierrot Yarns Macon [70% alpaca, 30% nylon; 80 yds/73m per 0.88 oz./25g skein]; color #24 dark brown, 16 skeins [385g]

## Tools/Notions:

- 8.0mm (US 11) knitting needles or size necessary to achieve gauge

## Finished measurements:

- back length 90cm/35.43"

## Gauge (10cm/4" square):

- pattern stitch: 11 sts and 14 rows
- k1p1 ribbing: 11 sts and 14 rows

*Gauge may vary according to individual knitting style. Change needle size if necessary to achieve gauge. Alternatively, rework pattern with your own gauge measurements.*

## Summary

**Body, collar, and hem:** Cast on with long-tail cast-on method. Work in k1p1 ribbing and pattern stitch. Bind off.

**Sleeves:** Pick up stitches along body where indicated; work cuffs in k1p1 ribbing. Bind off in pattern.

**Finishing:** Seam sections marked with ★ and ♥ with crochet slip stitch seam. Seam sleeves with mattress stitch.

## Abbreviations:

BO = bind off

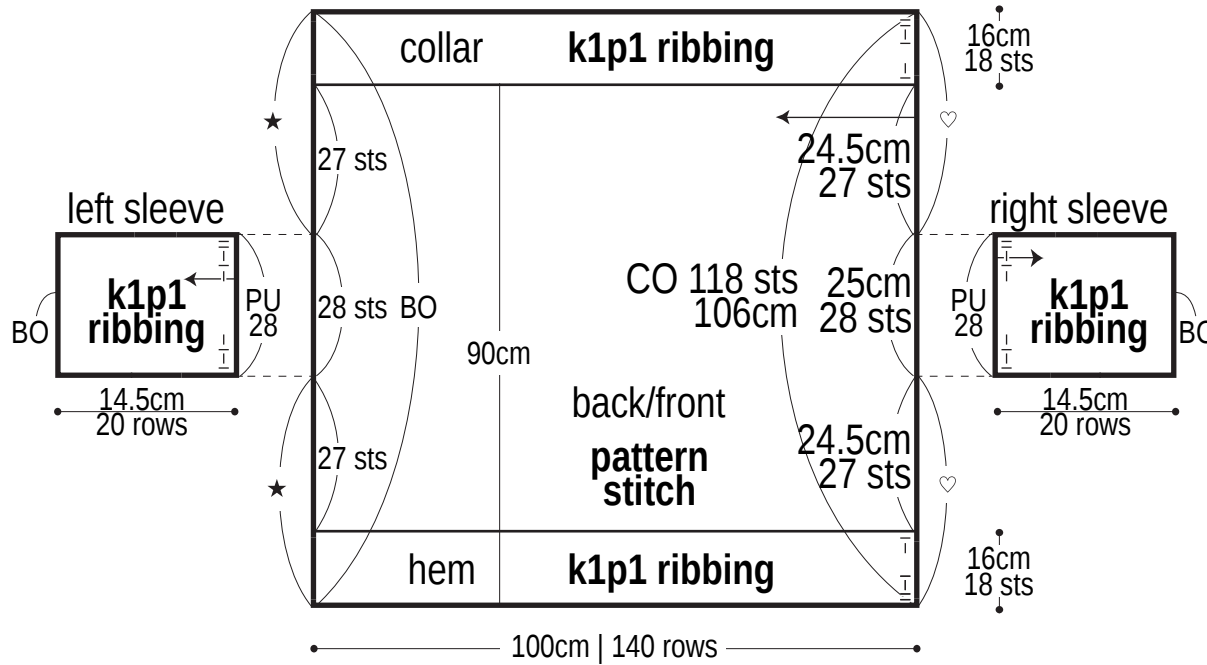
CO = cast on

k = knit

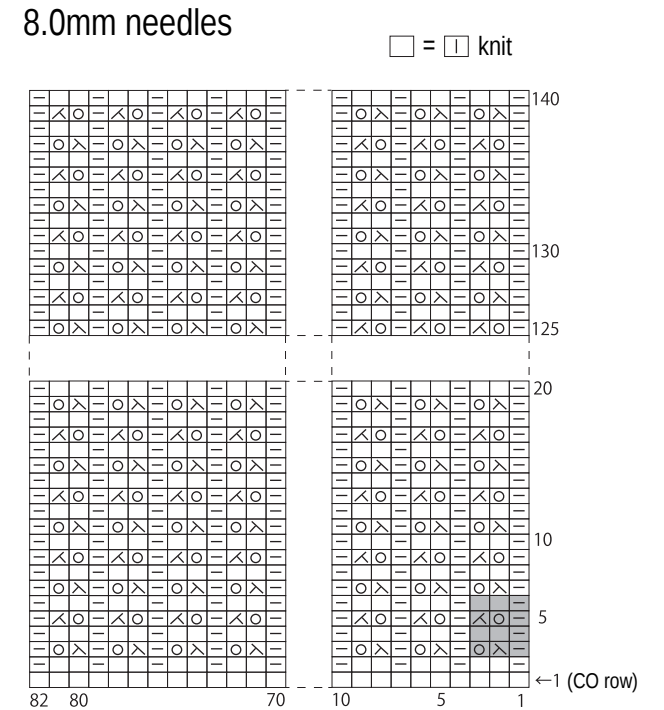
p = purl

PU = pick up

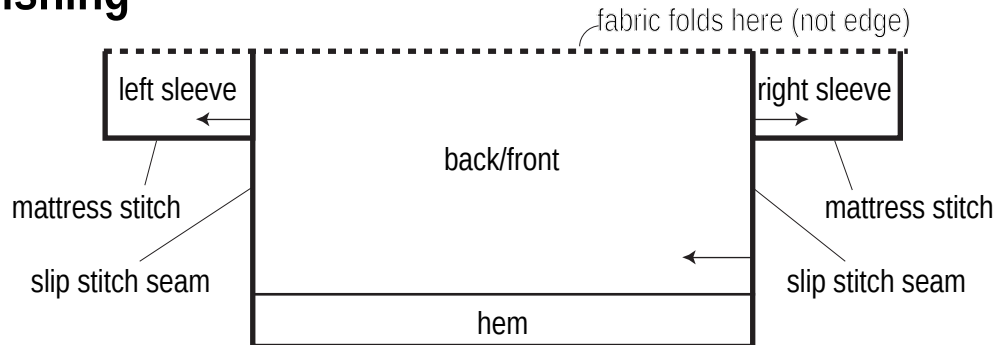
# Body & sleeves 8.0mm needles



## Pattern stitch 8.0mm needles



## Finishing



= 1 repeat  
 = 3 sts & 4 rows