

1218sweater Bottleneck Sweater



Suggested yarn:

- Pierrot Yarns Reine [100% merino wool; 162 yds/148m per 1.41 oz./40g skein];
 - color #07 burgundy, 12 skeins [450g]

Tools/Notions:

- 3.9mm (approx. US 6), 4.2mm (approx. US 6), and 4.5mm (US 7) knitting needles or sizes necessary to achieve gauge
- cable needle
- sewing needle

Finished measurements:

- bust 90cm/35.43"
- center back neck-to-cuff 77cm/30.31"
- back length 47.5cm/18.70"

Gauge (10cm/4" square):

- stockinette stitch: 18.5 sts and 26.5 rows
- pattern stitch: 26 sts and 26.5 rows
- k2p2 ribbing (with 3.9mm needles): 23 sts and 30 rows

Gauge may vary according to individual knitting style. Change needle size if necessary to achieve gauge. Alternatively, rework pattern with your own gauge measurements.

Summary

✳️**Note:** entire garment worked with 2 strands of yarn held together.

Body & sleeves: Cast on with long-tail cast-on method. Work in k2p2 ribbing. Change needle size. For back and sleeves, continue in stockinette stitch, working decreases in first row. For front, continue in pattern stitch and stockinette stitch, working decreases in first row. Shape neckline and raglan sleeve edges by binding off stitches as indicated and by working fully fashioned decreases (worked 1 st in from the edge).

Finishing: Seam raglan edges with mattress stitch. Seam underarm gusset with Kitchener stitch. Continuing from gusset, seam down the length of sleeve with mattress stitch. Seam sides with mattress stitch. Pick up stitches around neckline; work collar in k2p2 ribbing and stockinette stitch in the round. Bind off loosely.

Abbreviations:

BO = bind off

CO = cast on

k = knit

p = purl

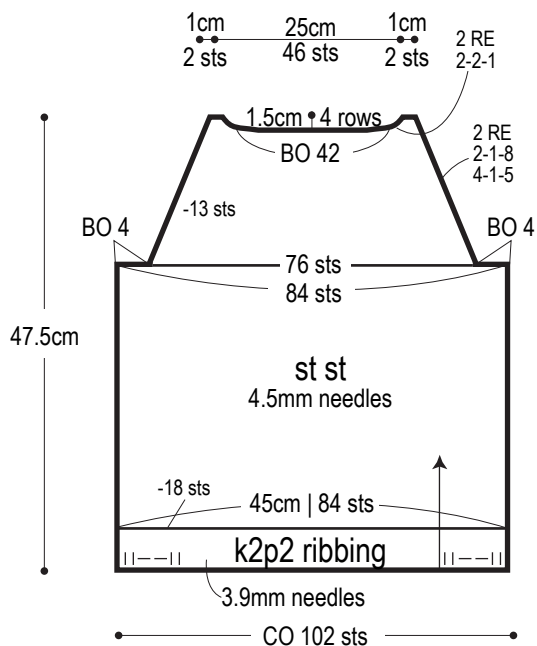
PU = pick up

RE = row(s) even

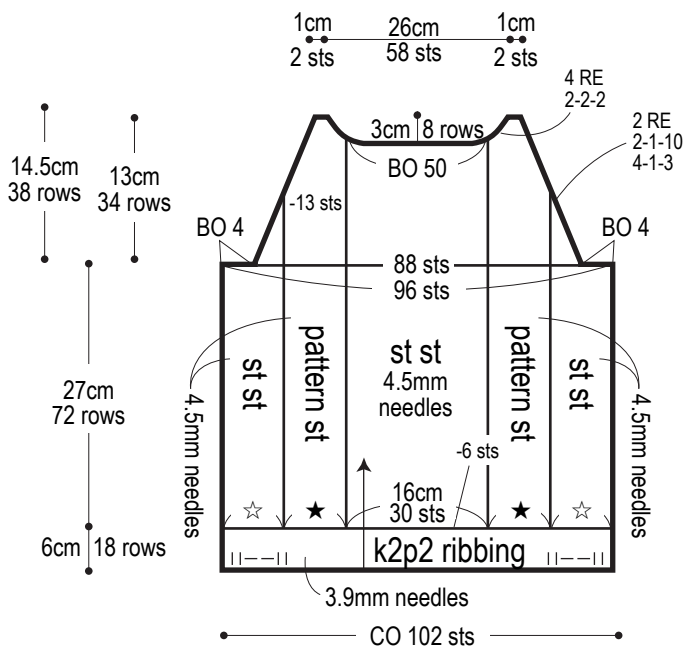
st st = stockinette stitch

= rows-stitches-times

Back



Front

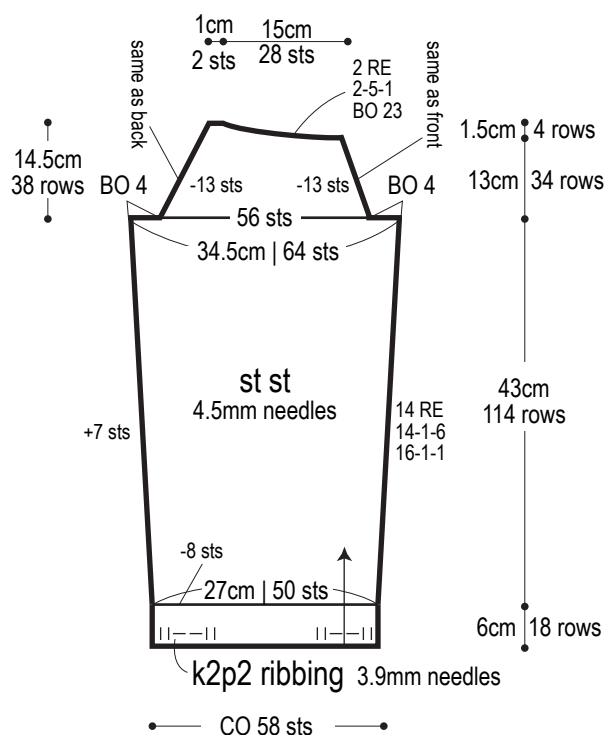


☆ = 6.5cm | 12 sts

★ = 8cm | 21 sts

Right sleeve

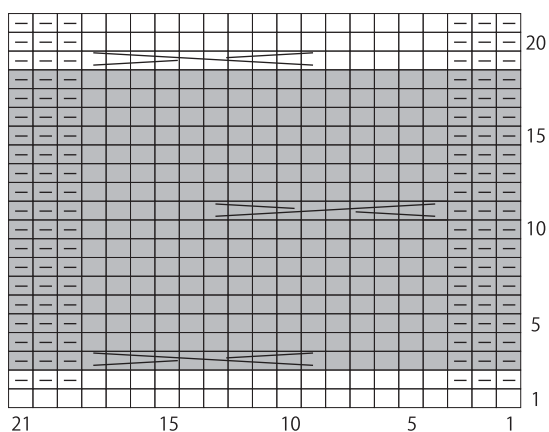
*Reverse shaping for left sleeve.



Pattern stitch

4.5mm needles

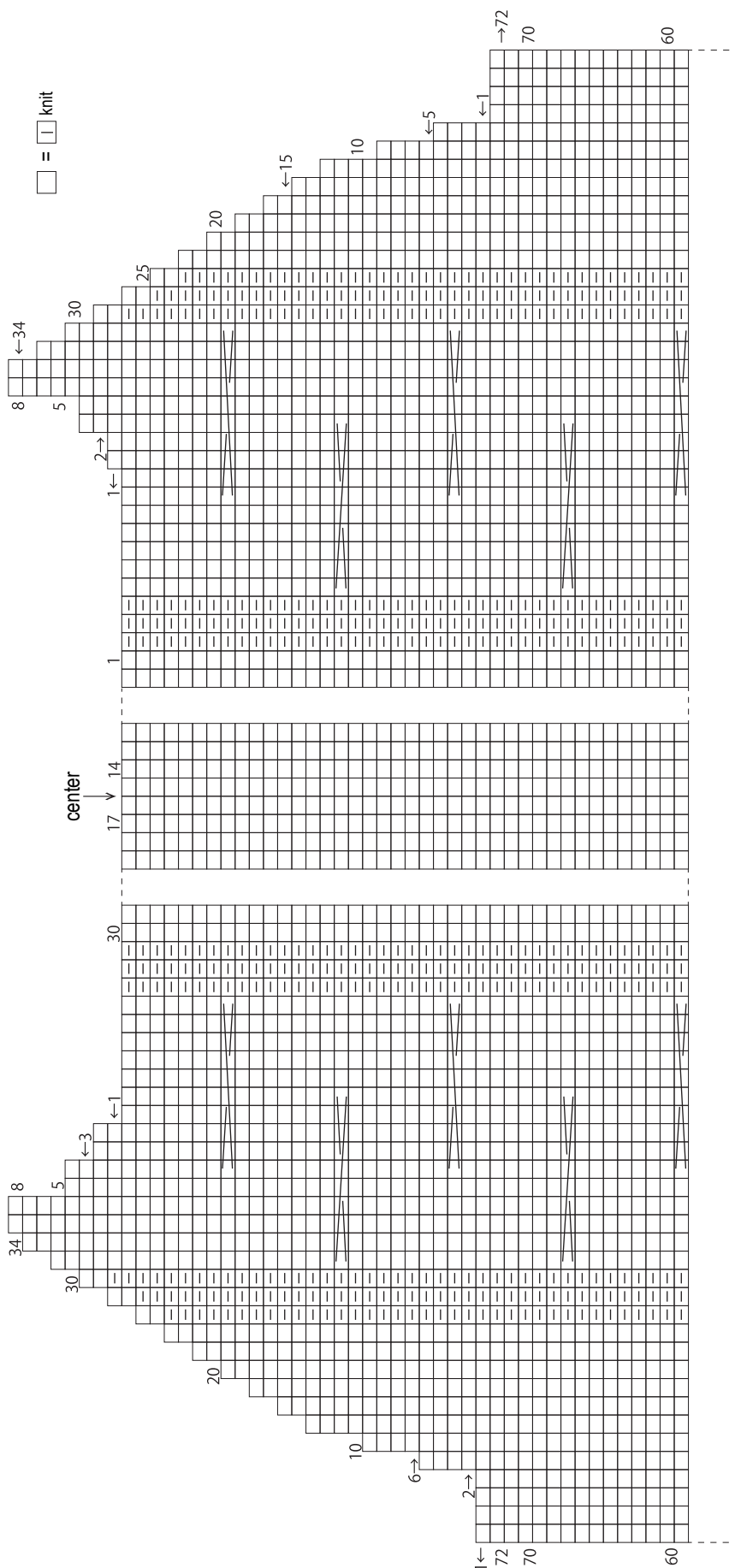
□ = □ knit



■ = 1 repeat = 21 st & 16 rows

Front: neckline & raglan sleeve shaping

4.5mm needles



||



C10F: slip 5 sts to cable needle and hold in front, k5, slip sts on cable needle back to left needle; k5.



||



C10B: slip 5 sts to cable needle and hold in back, k5, slip sts on cable needle back to left needle; k5.

Collar

