

216aw-18 Herringbone Sweater



Suggested yarn:

- Pierrot Yarns Traditional Merino [100% merino wool; 104 yds/95m per 1.41 oz./40g skein];
 - medium: color #06 Olive Gray, 13 skeins [490g]
 - large: color #06 Olive Gray, 14 skeins [540g]

Tools/Notions:

- 3.9mm (approx. US 6) and 4.5mm (US 7) knitting needles or sizes necessary to achieve gauge
- 4 buttons (15mm/0.59")

Finished measurements:

- | | |
|--|--|
| • medium: | • large: |
| • chest 104cm/40.94" | • chest 112cm/44.09" |
| • center back neck-to-cuff 80cm/31.50" | • center back neck-to-cuff 82cm/32.28" |
| • back length 65cm/25.59" | • back length 68cm/26.77" |

Gauge (10cm/4" square):

- stockinette stitch: 19 sts and 25 rows
- pattern stitch: 19 sts and 31 rows
- k1p1 ribbing: 23 sts and 28 rows

Gauge may vary according to individual knitting style. Change needle size if necessary to achieve gauge. Alternatively, rework pattern with your own gauge measurements.

Summary

Back & front: Cast on with long-tail cast-on method. Work in k1p1 ribbing. Change needle size, then continue in pattern stitch (working decreases on first row). Continue in stockinette stitch.

Sleeve: Cast on with long-tail cast-on method. Work in k1p1 ribbing. Change needle size, then continue in pattern stitch (working decreases on first row). Bind off all stitches.

Finishing: Seam shoulders with crochet slip stitch seam. Pick up stitches around neckline; work collar edging in k1p1 ribbing in the round. Bind off in pattern. Seam sleeves to body with crochet slip stitch seam. Seam sides and sleeve undersides with mattress stitch.

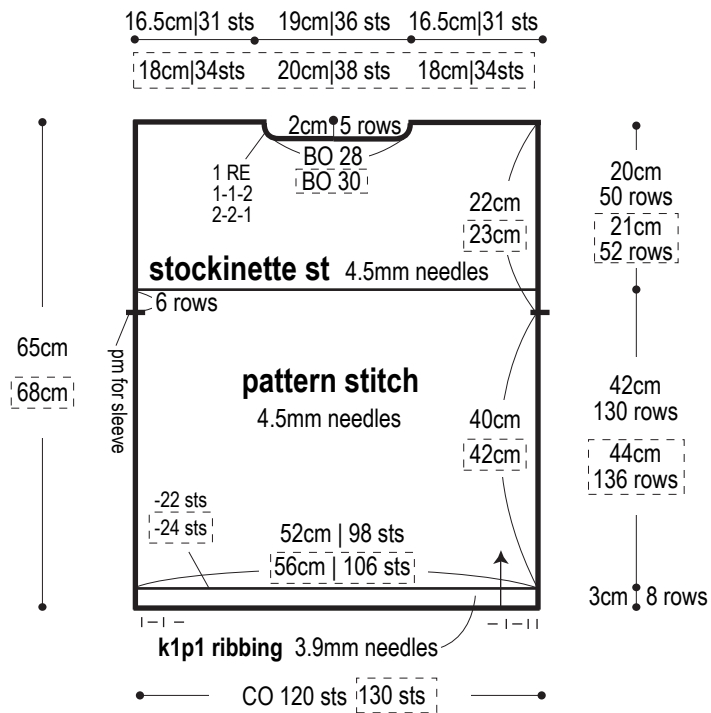
Abbreviations:

BO = bind off CO = cast on k = knit p = purl pm = place marker PU = pick up RE = row(s) even ### = rows-stitches-times

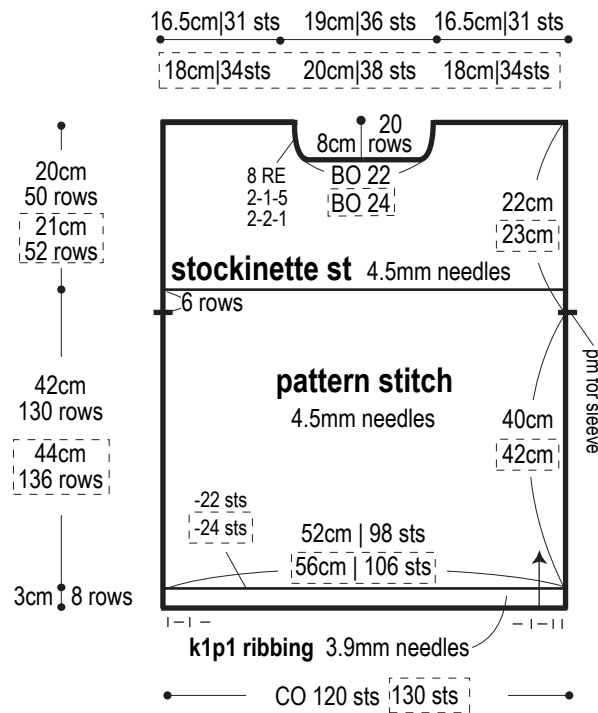
[] = large size

※Where only one set of numbers is provided, it refers to both sizes.

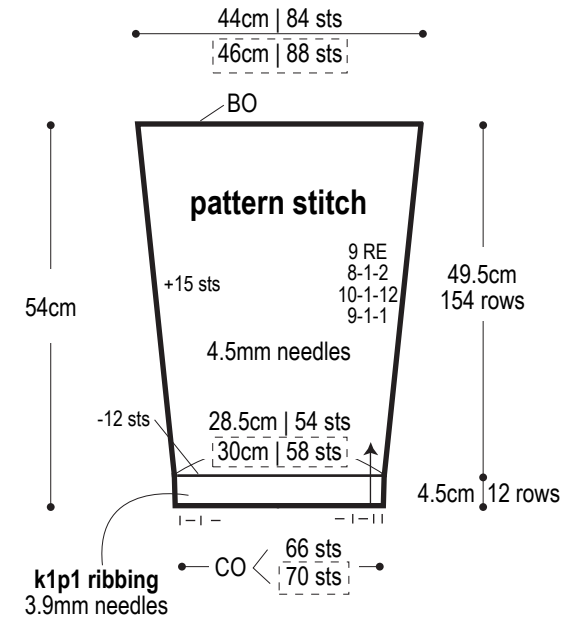
Back



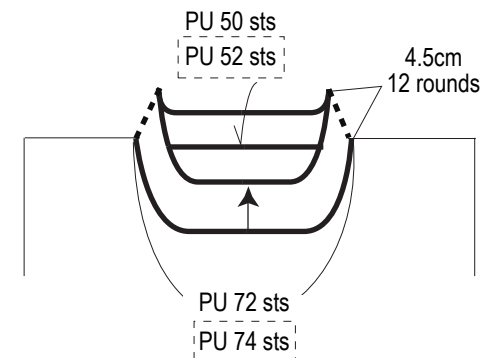
Front



Sleeve (make 2)

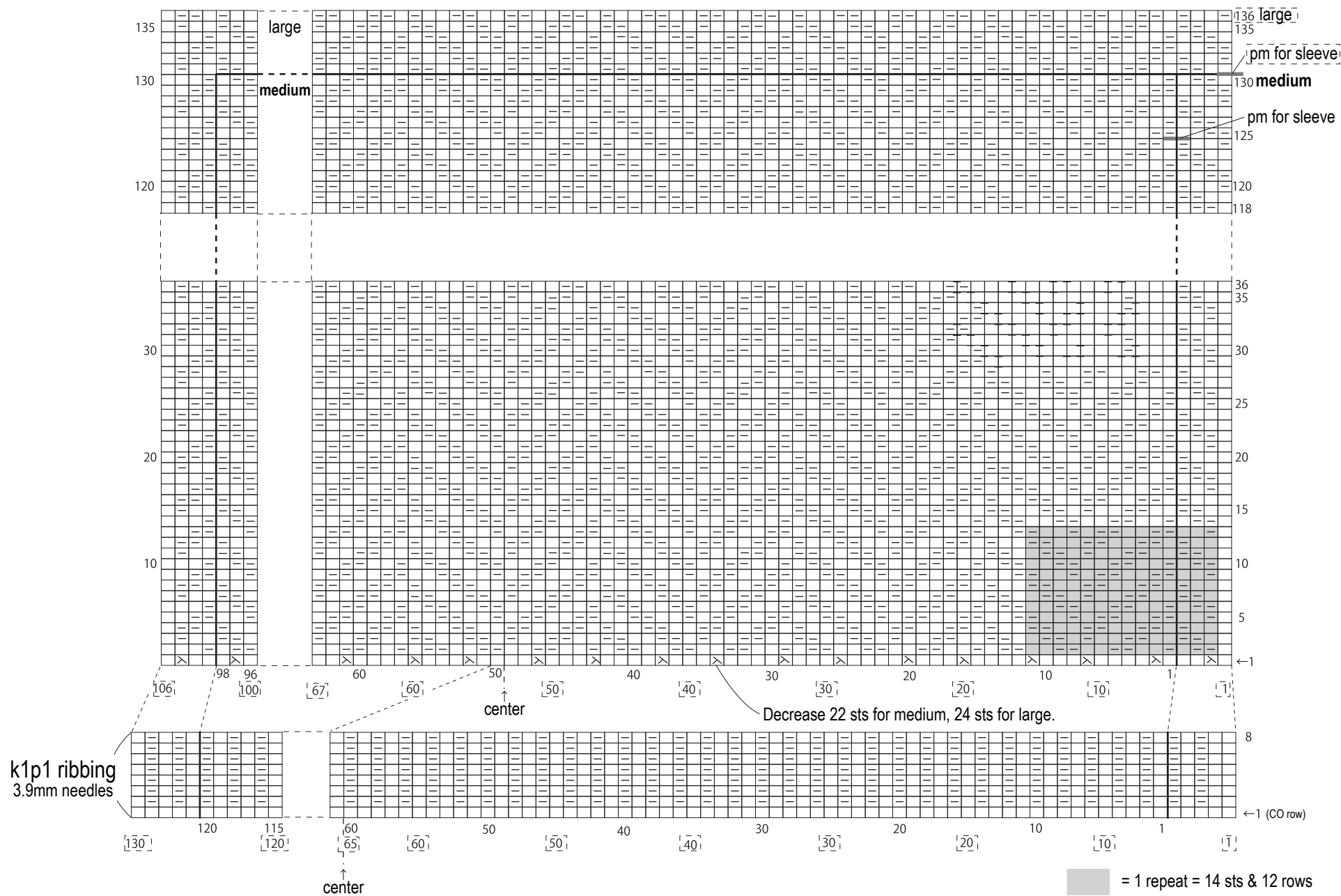


Collar k1p1 ribbing 3.9mm needles



Body: pattern stitch 4.5mm needles

□ = □ knit

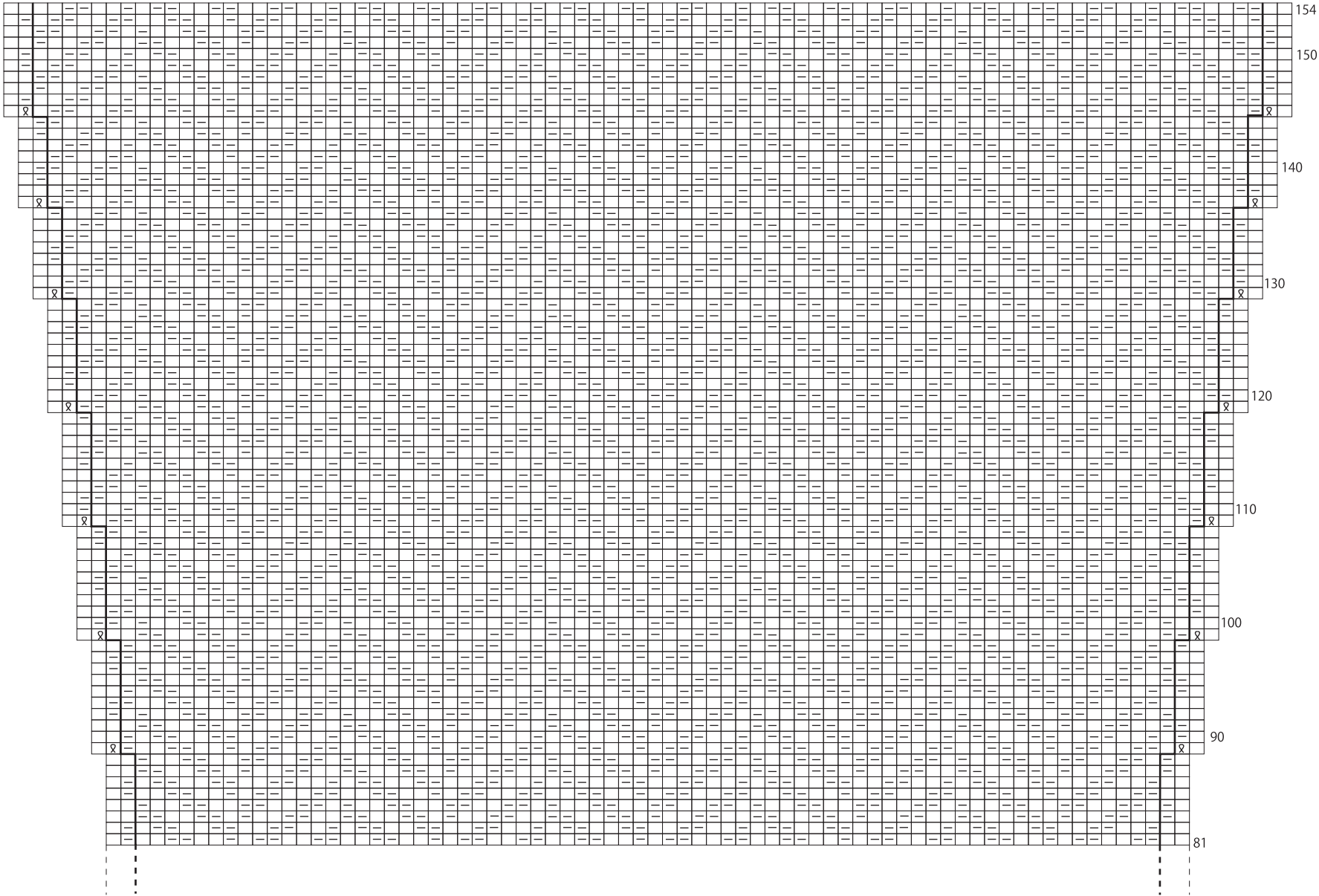


Sleeve: pattern stitch 4.5mm needles

 = large size

※Where only one set of numbers is provided, it refers to both sizes.

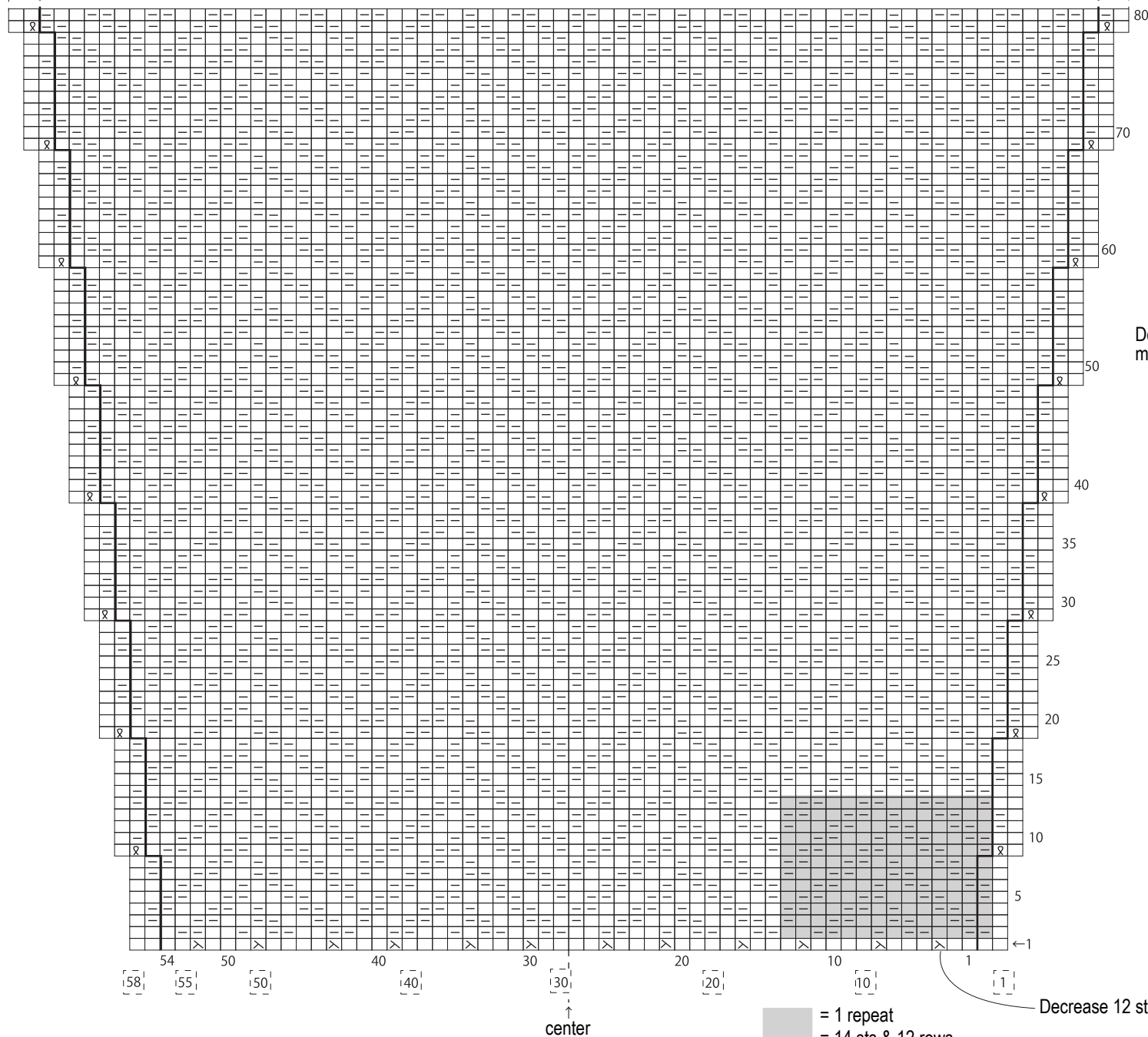
 = knit



continued on next page

large
medium

continued from previous page



Decrease 15 sts for both
medium and large.

9 RE
8-1-2
10-1-12
9-1-1

■ = 1 repeat
= 14 sts & 12 rows