

# 216aw-01 Switching Sweater



## Suggested yarn:

- Pierrot Yarns Soft Merino Fingering [100% merino wool; 183 yds/167m per 1.41 oz./40g skein]; color #17 charcoal gray, 6 skeins [210g]
- Pierrot Yarns Nimes [70% alpaca, 30% nylon; 142 yds/130m per 0.88 oz./25g skein]; color #06 gray, 9 skeins [220g]

## Tools/Notions:

- 3.6mm (approx. US 5), 3.9mm (approx. US 6), and 4.5mm (US 7) knitting needles or sizes necessary to achieve gauge
- cable needle

## Finished measurements:

- bust 102cm/40.16"
- cross back width 44cm/17.32"
- back length 63.5cm/25.00"
- sleeve length 61cm/24.02"

## Gauge (10cm/4" square):

- stockinette stitch: 16.5 sts and 22 rows
- pattern stitch A: 31 sts and 28 rows
- pattern stitch B: 26.5 sts and 28 rows
- k2p2 ribbing: 22 sts and 28 rows

*Gauge may vary according to individual knitting style. Change needle size if necessary to achieve gauge. Alternatively, rework pattern with your own gauge measurements.*

## Summary

✳️**Note:** entire garment worked with 2 strands of yarn held together.

**Body:** Cast on with long-tail cast-on method. Work in k2p2 ribbing. Continue in stockinette stitch, changing needle size/yarn and decreasing as indicated. Shape armscye and neckline by binding off stitches as indicated and by working fully fashioned decreases (1 stitch in from the edge).

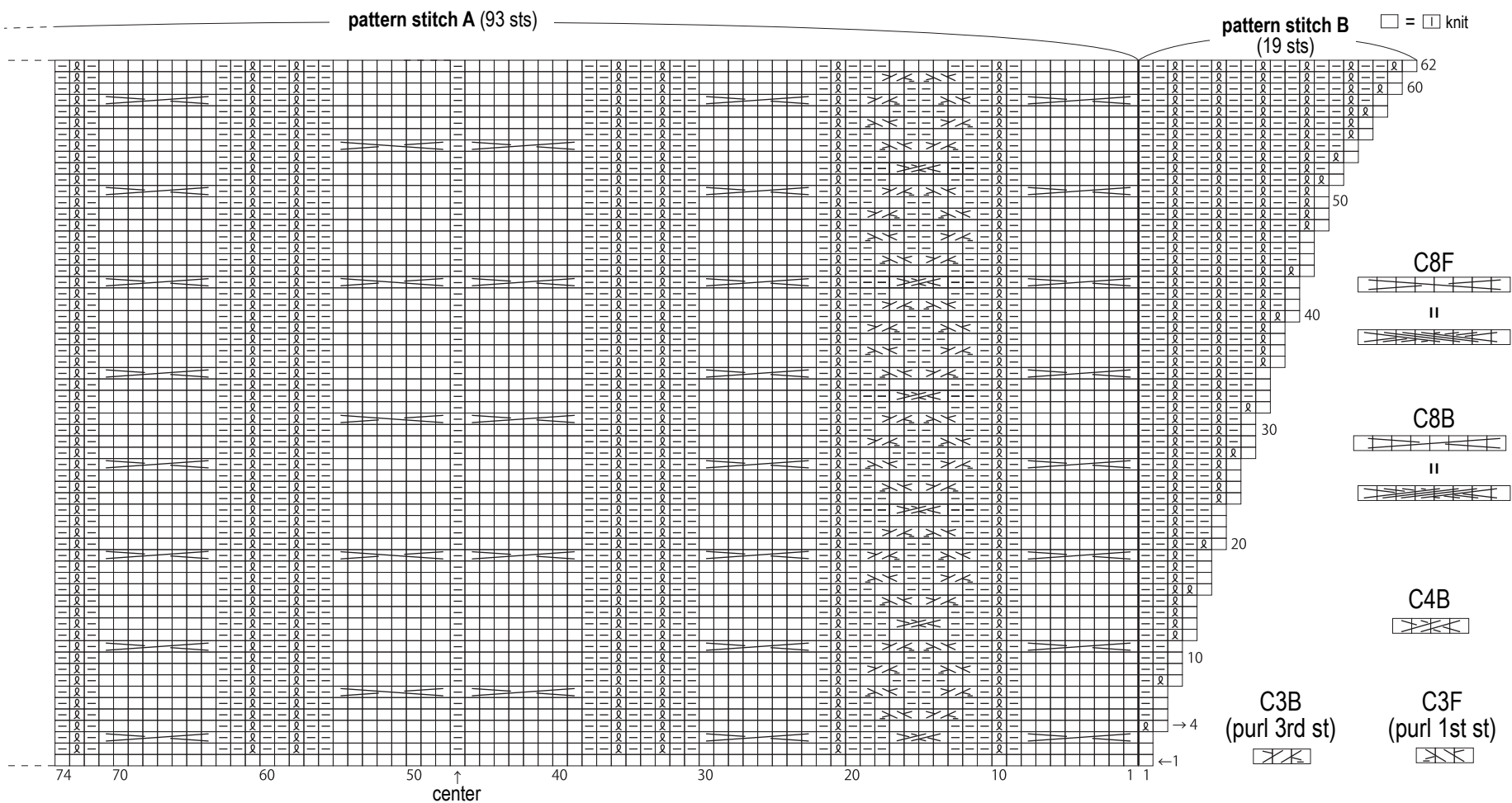
**Sleeve (make 2):** Cast on with long-tail cast-on method. Work 22 rows of k2p2 ribbing. Change needle size and yarn, then work 62 rows in pattern stitches A and B while working fully fashioned lifted increases (1 st in from the edge). Change needle size and yarn, then continue for 68 rows in stockinette stitch, working decreases in first row only.

**Finishing:** Seam shoulders with crochet slip stitch seam. Pick up stitches around neckline; work 5 rounds of seed stitch and 14 rounds of k2p2 ribbing. Bind off in pattern. Align ★ to ★ and seam with stitches-to-rows mattress stitch. Seam sleeves to body with crochet slip stitch seam. Seam sides and sleeve undersides with mattress stitch.

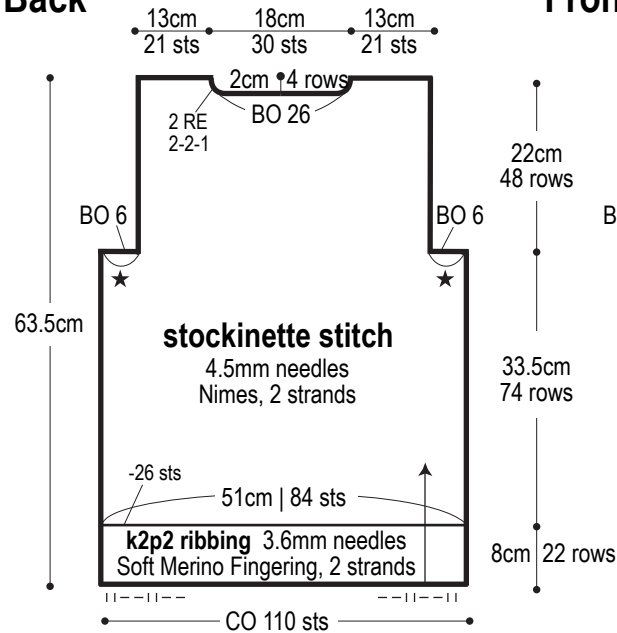
## Abbreviations:

BO = bind off      CO = cast on      k = knit      p = purl      PU = pick up      RE = row(s) even      #-#-# = rows-stitches-times

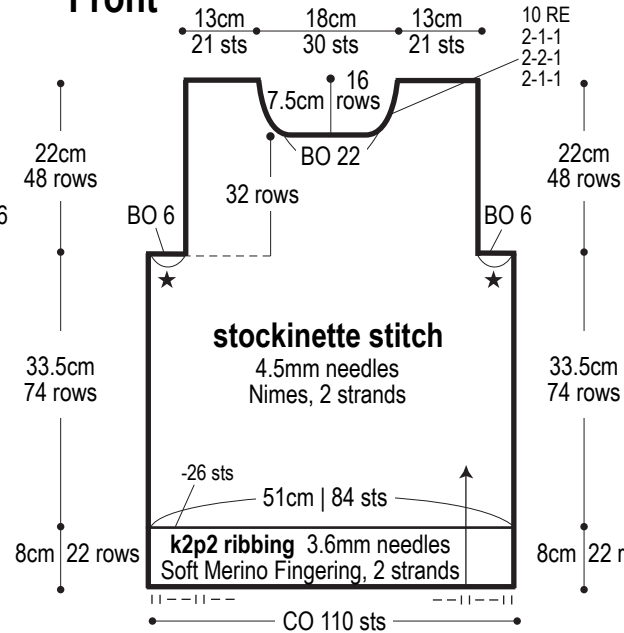
# Sleeve chart 3.9mm needles



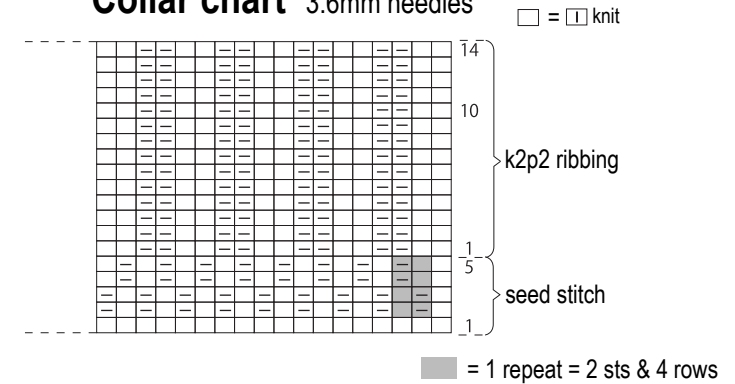
## Back



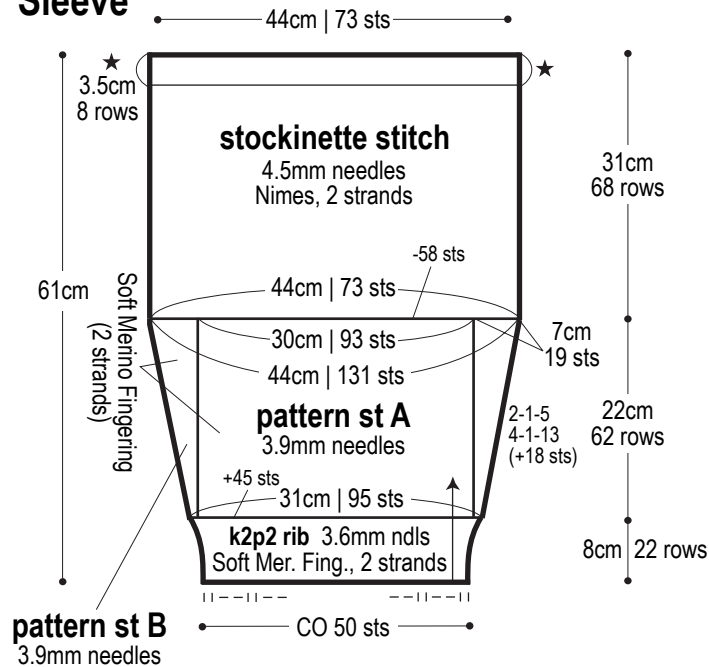
## Front



## Collar chart 3.6mm needles



## Sleeve



## Collar

3.6mm needles  
2 strands of Soft Merino Fingering

