

# 216aw-04 Asymmetry Sweater



## Suggested yarn:

- Pierrot Yarns Dandy Alice [100% merino wool; 151 yds/138m per 1.41 oz./40g skein]; color #08 moss garden, 15 skeins [600g]

## Tools/Notions:

- 3.9mm (approx. US 6) and 4.2mm (approx. US 6) knitting needles or sizes necessary to achieve gauge
- cable needle

## Finished measurements:

- bust 105cm/41.34"
- center back neck-to-cuff 71.5cm/28.15"
- back length 44cm/17.32"

## Gauge (10cm/4" square):

- reverse stockinette stitch: 19 sts and 24 rows
- pattern stitch: 24 sts and 24 rows
  - pattern stitches A and A': 18 sts = 8cm/3.15"
  - pattern stitch B: 42 sts = 17.5cm/6.89"
  - pattern stitches C and C': 66 sts = 27cm/10.63"

*Gauge may vary according to individual knitting style. Change needle size if necessary to achieve gauge. Alternatively, rework pattern with your own gauge measurements.*

## Summary

❖**Note:** entire garment worked with 2 strands of yarn held together.

**Back (with collar):** Cast on with long-tail cast-on method. Work in garter stitch and pattern stitches (see schematic). After working final row of body, place shoulder stitches on stitch holder (do not bind off). Continue working collar in pattern stitch and garter stitch. Bind off collar loosely.

**Front (with collar):** For right side, cast on 52 stitches with long-tail cast-on method. Work in garter stitch and pattern stitches for 24 rows (see schematic). Place stitches on stitch holder. For left side, cast on 74 stitches with long-tail cast-on method; work 24 rows as for right side. On row 25, work pattern stitch across left and right pieces, joining them into one piece. Work collar as for back but reversing layout of pattern stitch (see charts for specifics).

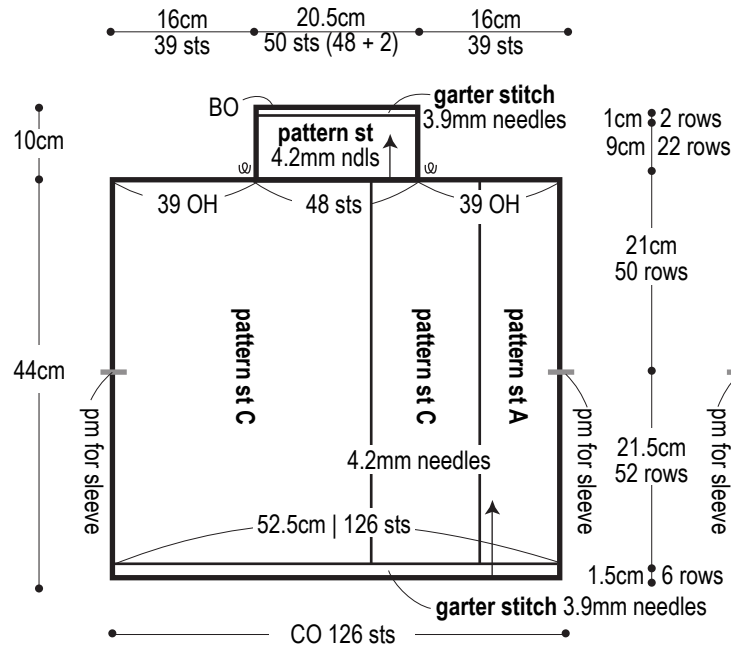
**Sleeve (make 2):** Cast on with long-tail cast-on method. Work in garter stitch, pattern stitches, and reverse stockinette stitch (see schematic). Shape sleeves with lifted increases worked 1 stitch in from the edge. Bind off.

**Finishing:** Seam shoulders with crochet slip stitch seam. Seam sides, sleeve undersides, and collar with mattress stitch. Seam sleeves to body with crochet slip stitch seam.

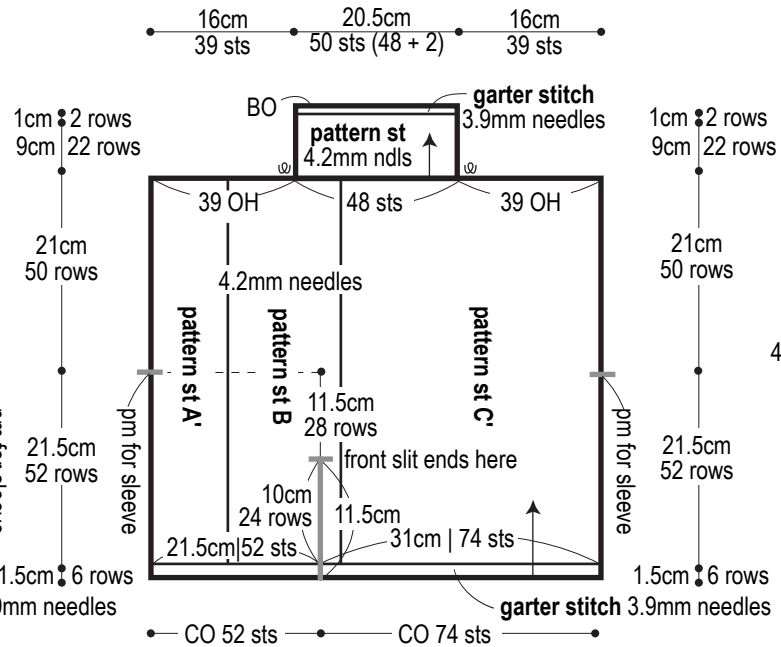
## Abbreviations:

BO = bind off      CO = cast on      OH = on hold (place on st holder)      pm = place marker      RE = row(s) even      st st = stockinette stitch      ### = rows-stitches-times

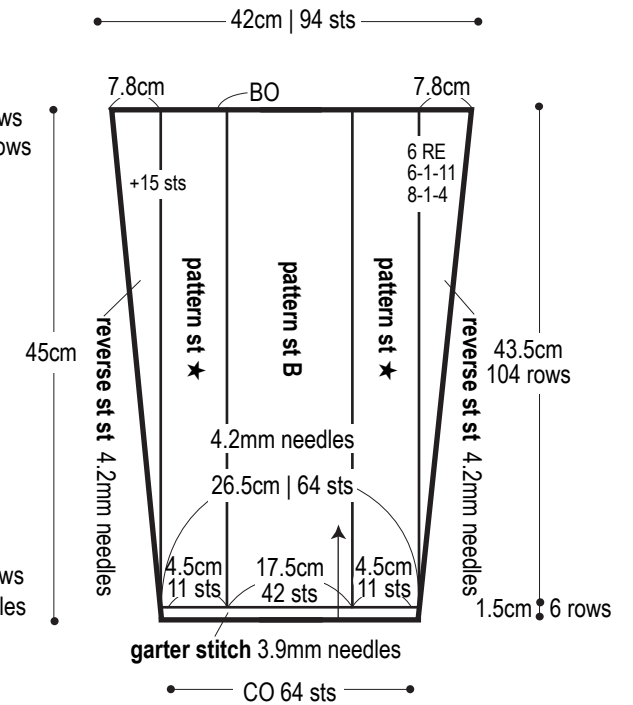
## Back (with collar)



## Front (with collar)

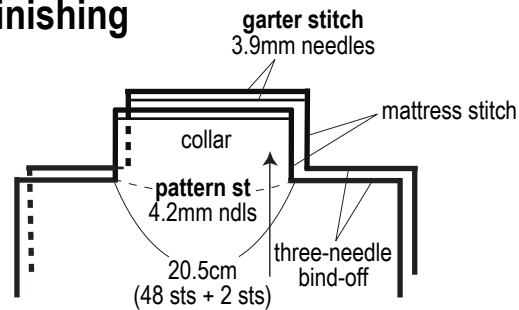


## Sleeve



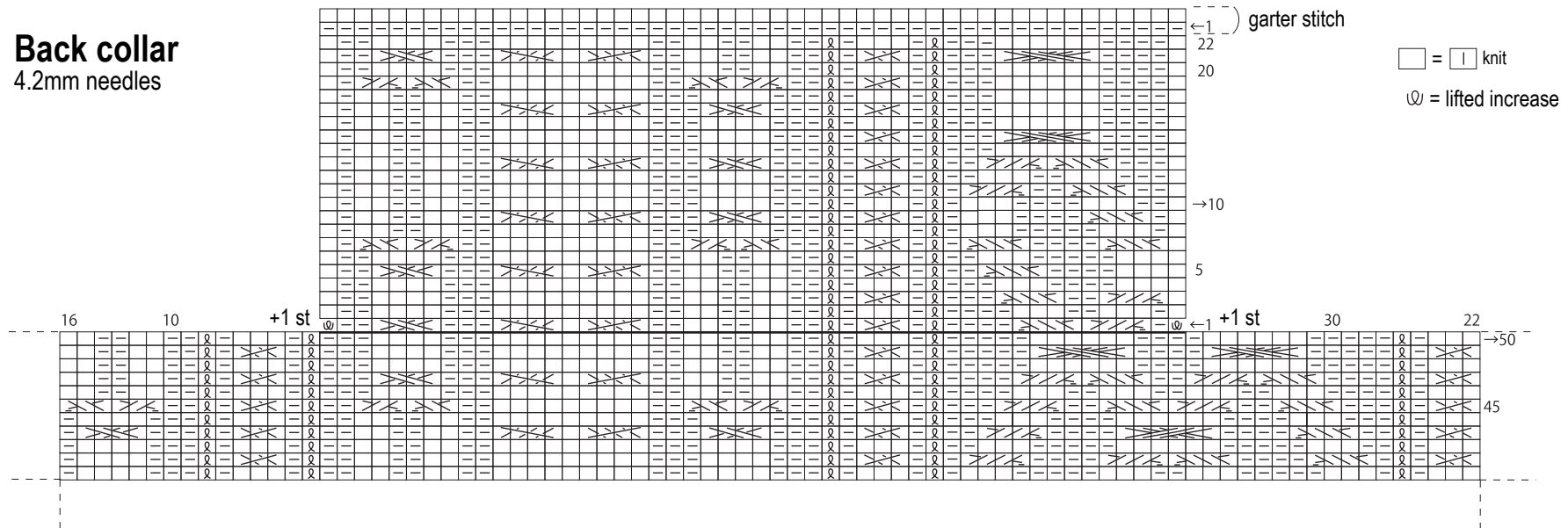
❖Collar: maintain pattern stitches as established on front/back.

## Finishing



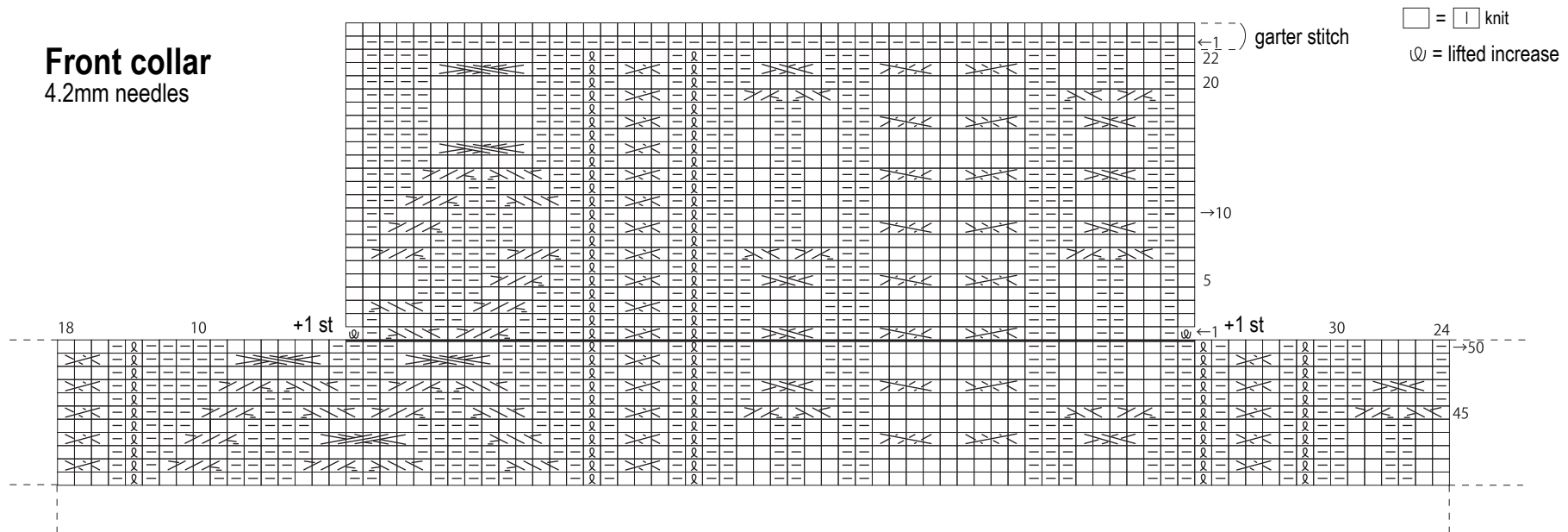
## Back collar

4.2mm needles



## Front collar

4.2mm needles



**Back** 4.2mm needles

**pattern stitch ★**

11 sts

✱Work with 2 strands  
of yarn held together.

end of collar  
↓

center  
↓

pm for sleeve

126

120

110

100

90

80

70

61

60

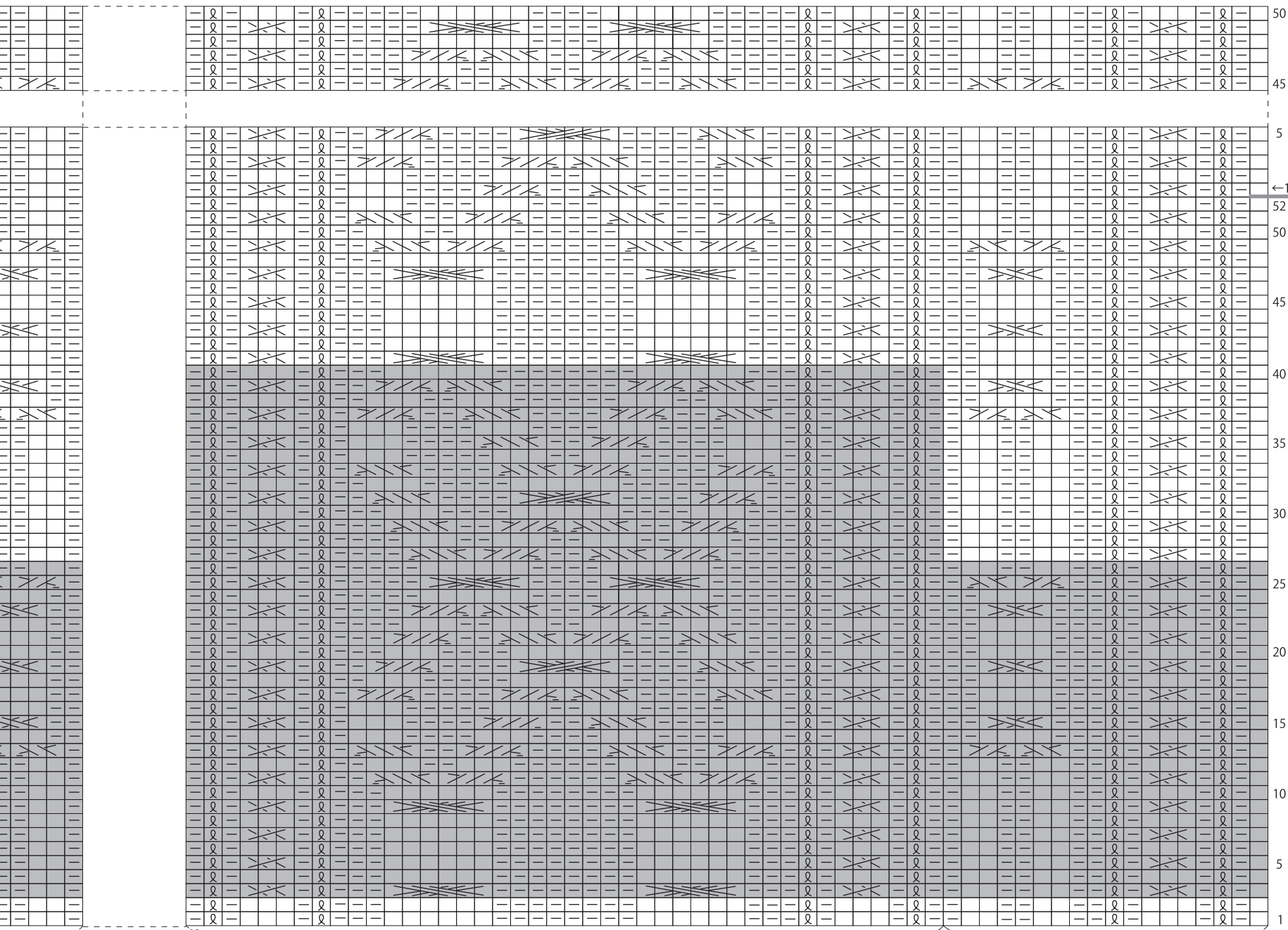
**pattern stitch C**

— 27cm | 66 sts & 24 rows = 1 repeat

center  
↓

start collar here  
↓

□ = □ knit



←1 pm for sleeve

pattern stitch B

17.5cm | 42 sts & 38 rows = 1 repeat

pattern stitch A

8cm | 18 sts & 24 rows = 1 repeat

■ = 1 repeat

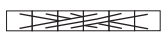
# Front 4.2mm needles

※Work with 2 strands of yarn held together.

end of collar

center

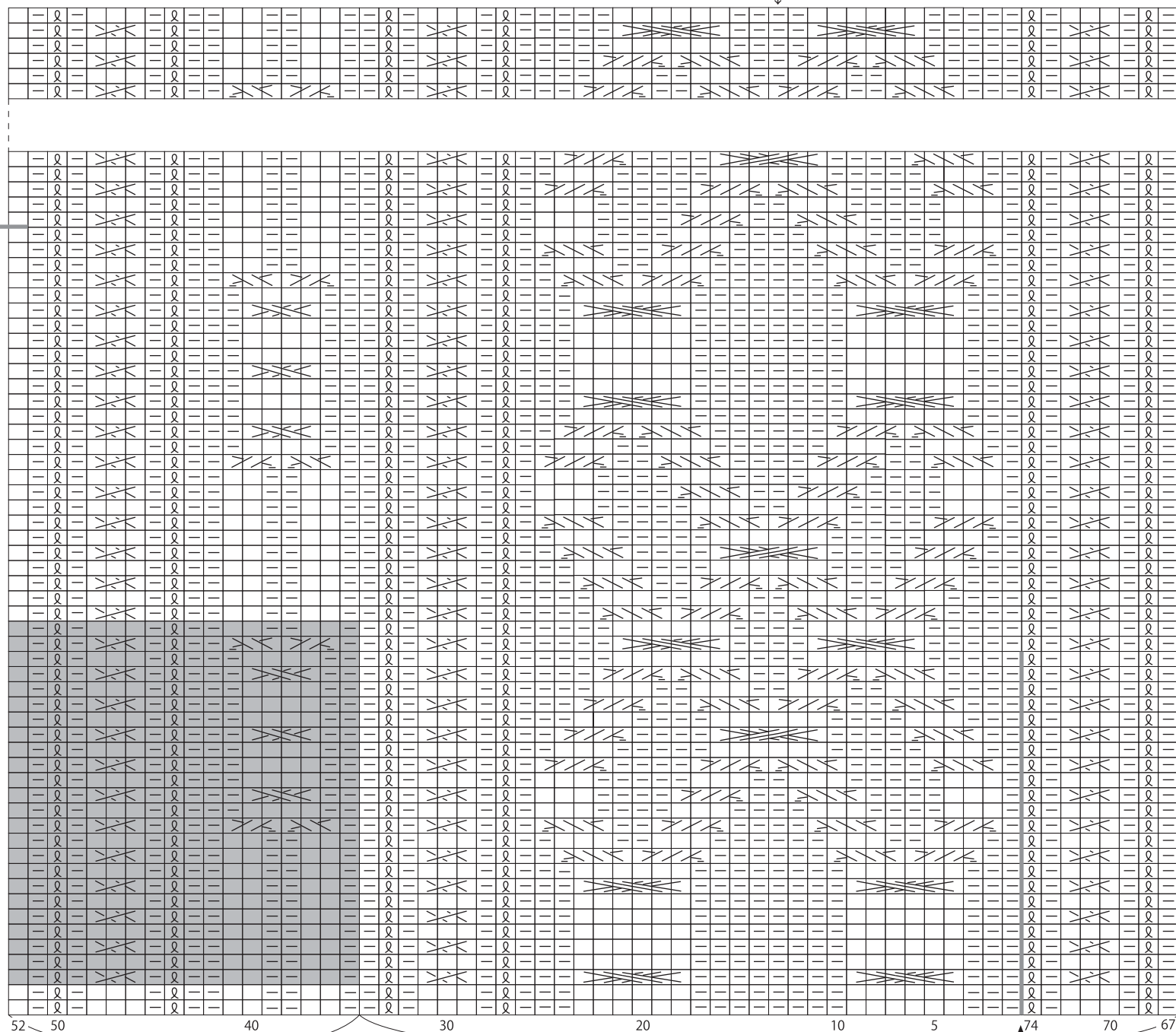
pm for sleeve



||  
C6B



||  
C6F



pattern stitch A'

8cm | 18 sts & 24 rows = 1 repeat

pattern st B

side slit

→

11 sts

$\square = \square \mid \text{knit}$

← 1 pm for sleeve

← 1

■ = 1 repeat

**pattern stitch C'**

27cm | 66 sts & 24 rows = 1 repeat