

tricot8-5 Pompom Hat



Suggested yarn:

- Keito-Zakka Stores Atelier Wool [100% wool; 69 yds/63m per 1.41 oz./40g skein];
 - version A: color #56 persimmon, 2 skeins [45g]
 - version B: color #65 café au lait, 1 skein [30g]
- Keito-Zakka Stores Quartet Tweed [100% wool; 68 yds/62m per 1.41 oz./40g skein];
 - version A: color #02 apple cinnamon, 1 skein [30g]
 - version B: color #03 biscuit, 1 skein [35g]
- Keito-Zakka Stores Confetti [42% acrylic, 34% wool, 24% nylon; 98 yds/90m per 1.23 oz./35g skein];
 - version A: color #06 banana chocolate, 1 skein [15g]
 - version B: color #11 kiwi fruit, 1 skein [15g]

Tools/Notions:

- 5.4mm (approx. US 9) knitting needles or size necessary to achieve gauge
- cable needle

Finished measurements:

- head circumference 50cm/19.69"

Gauge (10cm/4" square):

- pattern stitch A (both versions): 25 sts and 22.5 rows
- pattern stitch B (version A): 19.5 sts and 23 rows
- pattern stitch B (version B): 16.5 sts and 23 rows

Gauge may vary according to individual knitting style. Change needle size if necessary to achieve gauge. Alternatively, rework pattern with your own gauge measurements.

Summary

Hat: Cast on with long-tail cast-on method. Work in pattern stitch A, then bind off all stitches. Pick up stitches along edge of pattern stitch A strip; work 18 rows in pattern stitch B. On next row, begin working decreases as indicated. On final row, cut yarn and thread tail through all remaining stitches; cinch top of hat shut.

Finishing: Seam pattern stitch A section of sides together with whipstitch. Seam pattern stitch B section together with mattress stitch. Make a pompom and fasten to top of hat.

Abbreviations:

BO = bind off

CO = cast on

PU = pick up

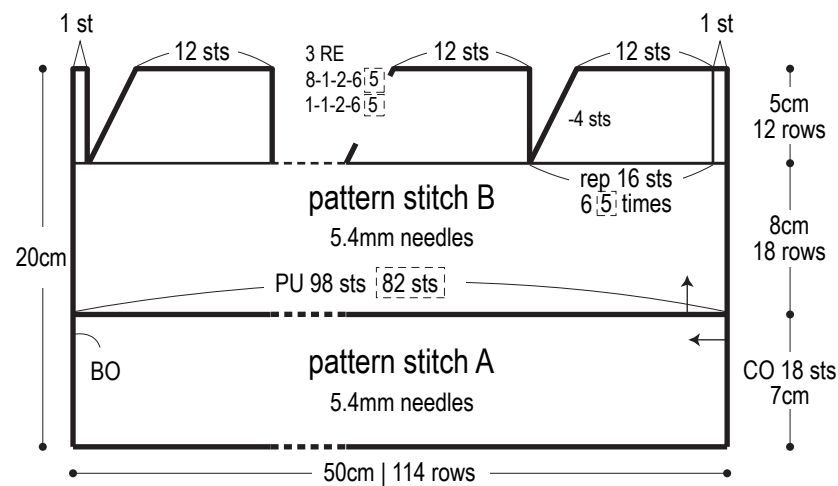
RE = row(s) even

= rounds-stitches-places-times [for evenly spaced decreases across entire round]. For example, 1-2-3-4 means "every 1 round, decrease 2 stitches in each of 3 places across the round; do this 4 times total."

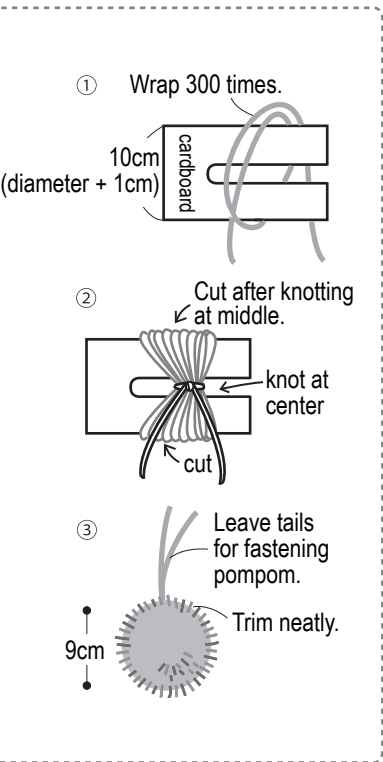
Hat

※Where only one set of numbers is provided, it refers to version A or both versions.

 = version B

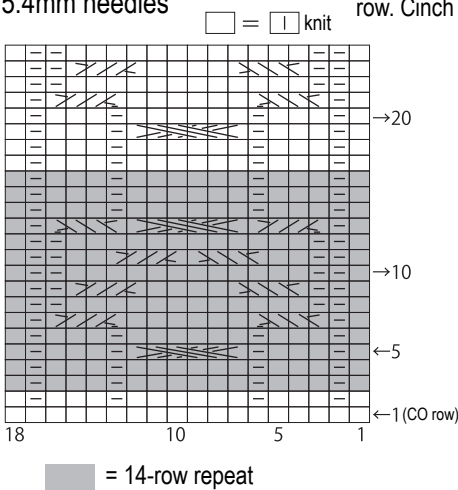


Pompom instructions

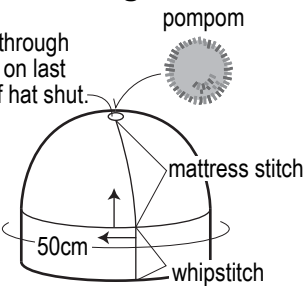


Finishing

Pattern stitch A
5.4mm needles



Thread yarn tail through all sts remaining on last row. Cinch top of hat shut.



Key to colors

	pattern st A	pattern st B	pompom
A	Quartet Tweed color #02	Atelier Wool color #56	Confetti color #06
B	Atelier Wool color #65	Quartet Tweed color #03	Confetti color #11

Pattern stitch B 5.4mm needles

