

Subtle Hearts



Suggested yarn:

- Keito-Zakka Stores Merino Warm DK [40% merino wool, 60% wool; 96 yds/88m per 1.41 oz./40g skein];
 - version A:
 - color #41 off-white, 2 skeins [55g]
 - color #44 Bordeaux, 1 skein [35g]
 - version B:
 - color #44 Bordeaux, 2 skeins [55g]
 - color #41 off-white, 1 skein [35g]

Tools/Notions:

- 3.9mm (approx. US 6) and 4.5mm (US 7) double-pointed knitting needles or sizes necessary to achieve gauge

Finished measurements:

- head circumference 54cm/21.26"
- length 24.5cm/9.65"

Gauge (10cm/4" square):

- pattern stitch: 20.5 sts and 26.5 rounds

Gauge may vary according to individual knitting style. Change needle size if necessary to achieve gauge. Alternatively, rework pattern with your own gauge measurements.

Summary

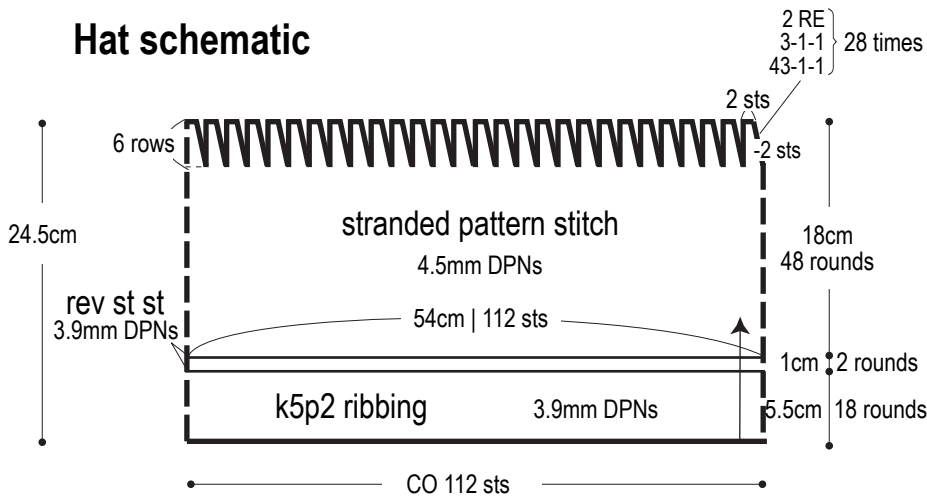
Hat: Cast on with long-tail cast-on method and join into the round. Work k5p2 ribbing in the round, then continue in reverse stockinette stitch. Switch to larger needles and continue in stranded pattern stitch. On round 43, begin working decreases as indicated. When finished, cut yarn and thread yarn through all remaining stitches to cinch top of hat shut.

Finishing: Make a pom-pom using colors 41 and 44, then attach to top of hat.

Abbreviations:

CO = cast on
k = knit
p = purl
RE = round(s) even
st st = stockinette stitch
= rows-stitches-times

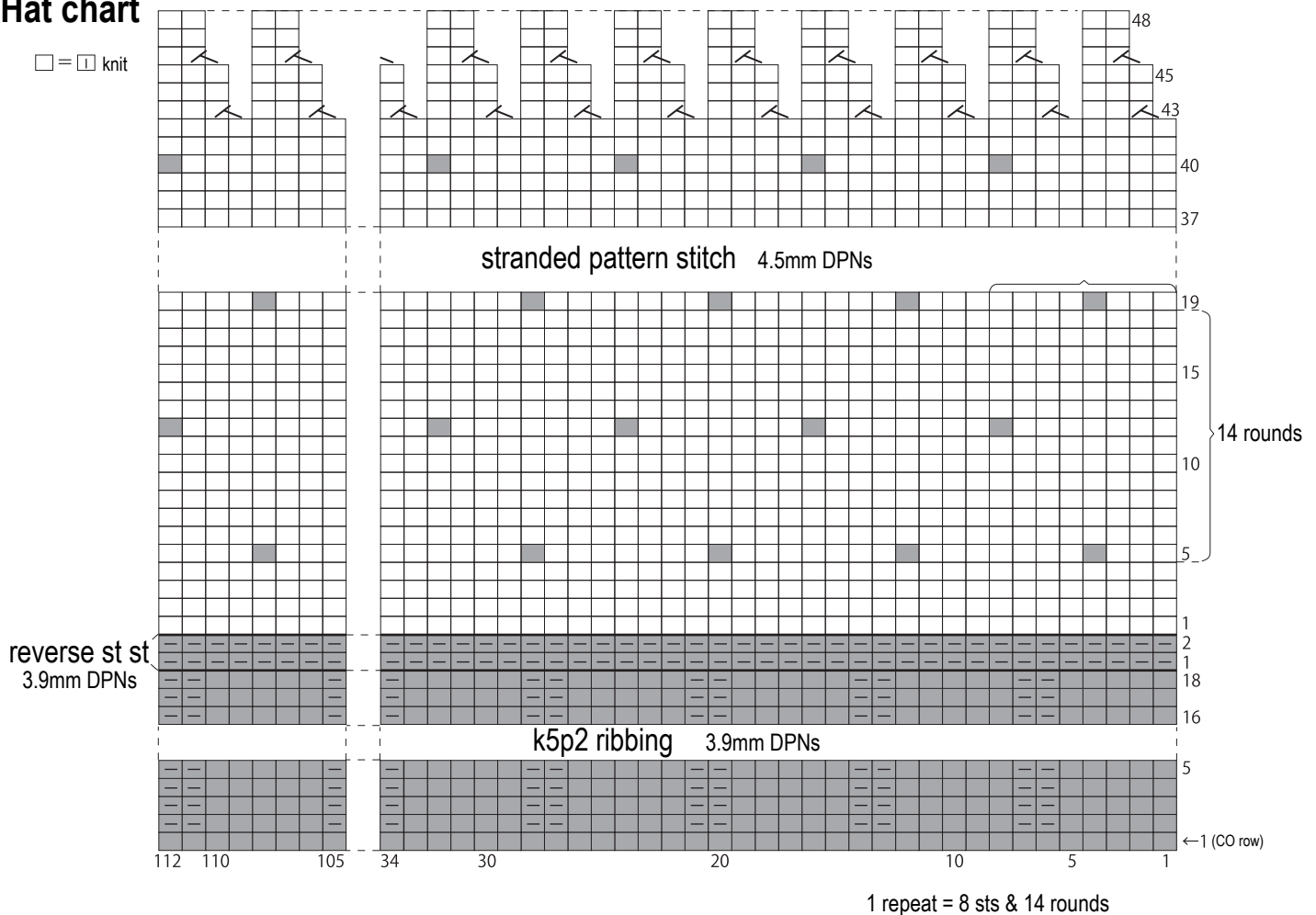
Hat schematic



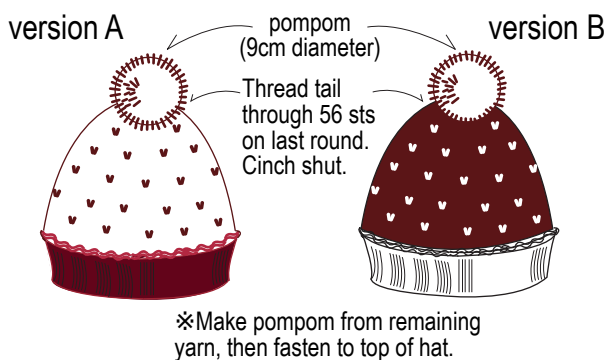
Key to colors

	version A	version B
k5p2 ribbing	#44 Bordeaux	#41 off-white
reverse st st	#44 Bordeaux	#41 off-white
pattern stitch □	#41 off-white	#44 Bordeaux
pattern stitch ■	#44 Bordeaux	#41 off-white

Hat chart



Finishing



Pompom instructions

