

# 365bolero Momo Little Bolero



## Suggested yarn:

- Pierrot Yarns Momo Little [100% merino wool; 118 yds/108m per 1.06 oz./30g skein]; color #06 light camel, 8 skeins [220g]

## Tools/Notions:

- 3.0mm (approx. US C or D) crochet hook or size necessary to achieve gauge

## Finished measurements:

- length approx. 39cm/15.35"
- center back neck-to-cuff approx. 45cm/17.72"

## Gauge (10cm/4" square):

- pattern stitch: 21 sts and 10 rows

*Gauge may vary according to individual crochet style. Change hook size if necessary to achieve gauge. Alternatively, rework pattern with your own gauge measurements.*

## Summary

❖**Note:** Like all Japanese patterns, stitch counts given here for foundation chains do not include any chain sts needed for turning posts.

**Body:** Work foundation chain to begin, then work in pattern stitch. Matching symbols on schematic, seam edges with chain seam (alternating chain st and slip st as indicated) with right sides facing each other.

**Finishing:** Work edging A around cuffs. Work edging B in the round along neckline, front edges, and hem.

## Abbreviations:

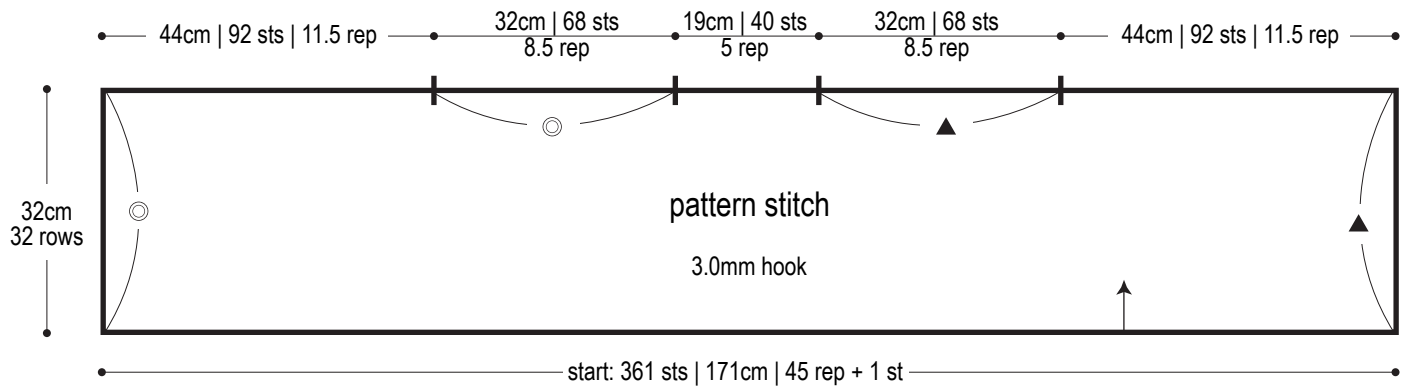
ch = chain

rep = pattern repeat(s)

RS = right side

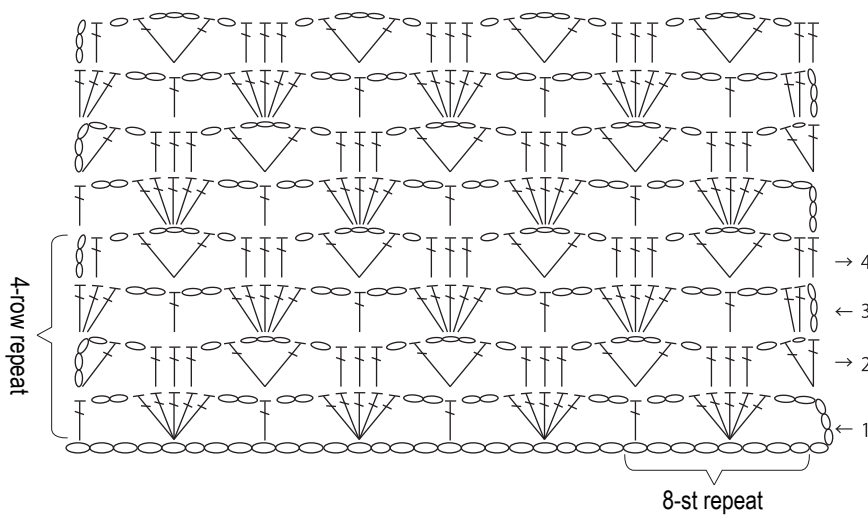
WS = wrong side

## Bolero 3.0mm hook

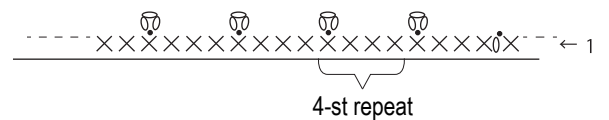


※Align ◎ to ◎ and ▲ to ▲, respectively. Seam with chain seam (alternating chain st and slip st to maintain pattern).

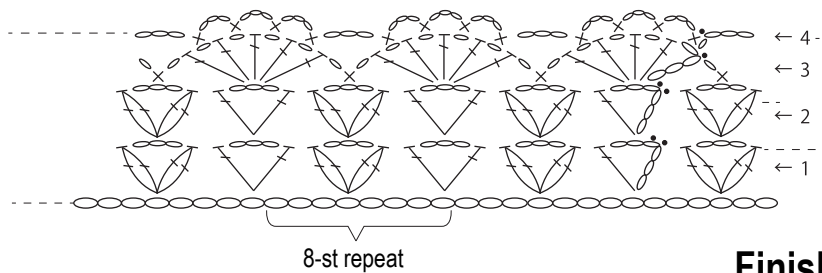
## Pattern stitch 3.0mm hook



## Edging A 3.0mm hook



## Edging B 3.0mm hook



## Finishing 3.0mm hook

