

Seven Up Jacket



Suggested yarn:

- Mondial Seven [55% merino wool, 41% acrylic, 4% nylon; 77 yds/70m per 1.76 oz./50g skein];
 - color #860 dream sunset, 12 skeins [590g]

Tools/Notions:

- 6.0mm (US 10), 6.6mm (approx. US 10.5), and 7.0mm (no US equivalent) knitting needles or sizes necessary to achieve gauge
- 5.0mm (US H) crochet hook or size necessary to achieve gauge
- 6 buttons (30mm/1.18")

Finished measurements:

- bust 96.5cm/37.99"
- center back neck-to-cuff 75.5cm/29.72"
- back length 59.5cm/23.43"

Gauge (10cm/4" square):

- seed stitch (with 7.0mm needles): 13 sts and 24 rows
- seed stitch (with 6.0mm needles): 14 sts and 26 rows

Gauge may vary according to individual knitting style. Change needle size if necessary to achieve gauge. Alternatively, rework pattern with your own gauge measurements.

Summary

Body and sleeves: Cast on with long-tail cast-on method. Work in seed stitch. Shape raglan edges by working fully fashioned decreases 2 sts in from the edges. For right front only, work buttonholes. Right and left fronts are mirror images of each other (aside from buttonholes).

Collar: Cast on with long-tail cast-on method. Work in seed stitch, changing needle size when indicated to alter gauge. Bind off. Work edging along 3 edges of collar.

Finishing: Seam raglan edges of body and sleeves using mattress stitch. Align \triangle to \triangle and \odot to \odot , respectively, and seam with stitches-to-rows mattress stitch. Seam sides and sleeve undersides with mattress stitch. Align markers on collar to body and sleeves as shown in finishing schematic; seam together with crochet slip stitch seam. Turn down seamed section and reinforce seam with whipstitch. Work edging along hem and buttonbands. Work edging around cuffs in the round.

Abbreviations:

BO = bind off

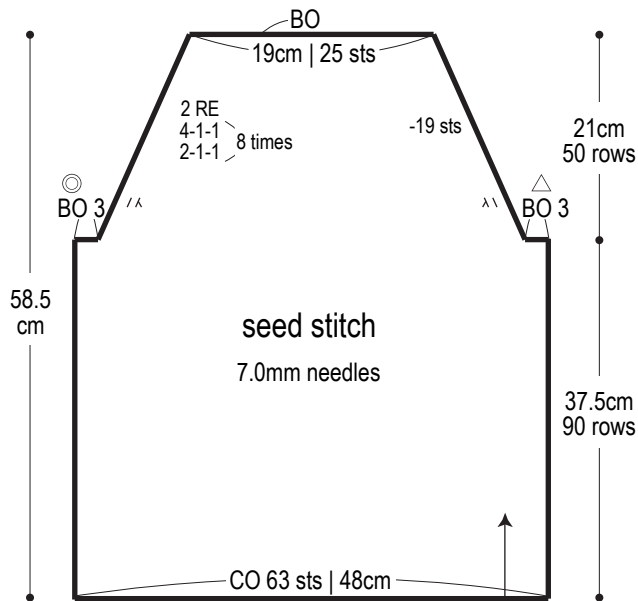
CO = cast on

PU = pick up

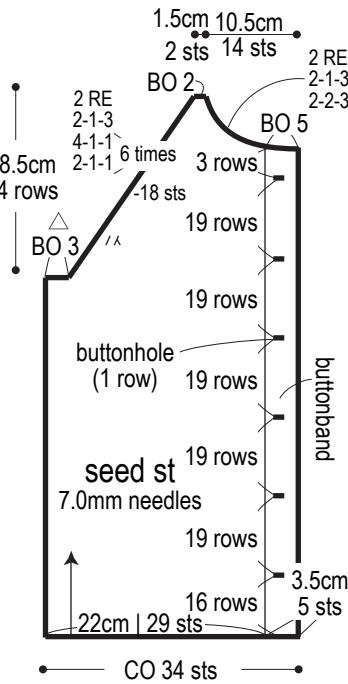
RE = row(s) even

#-#-# = rows-stitches-times

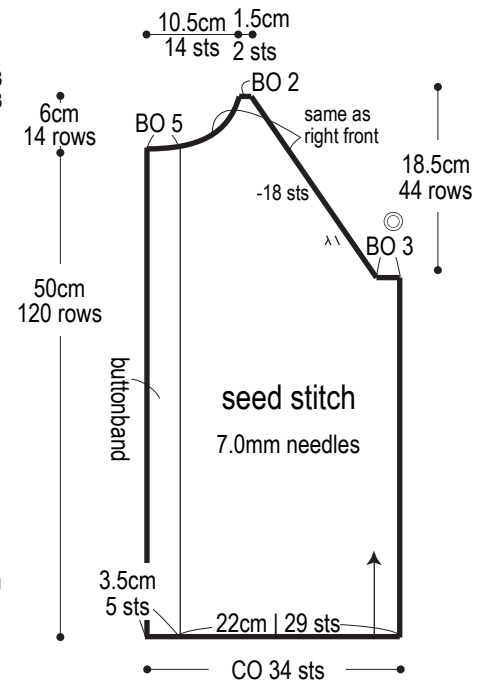
Back



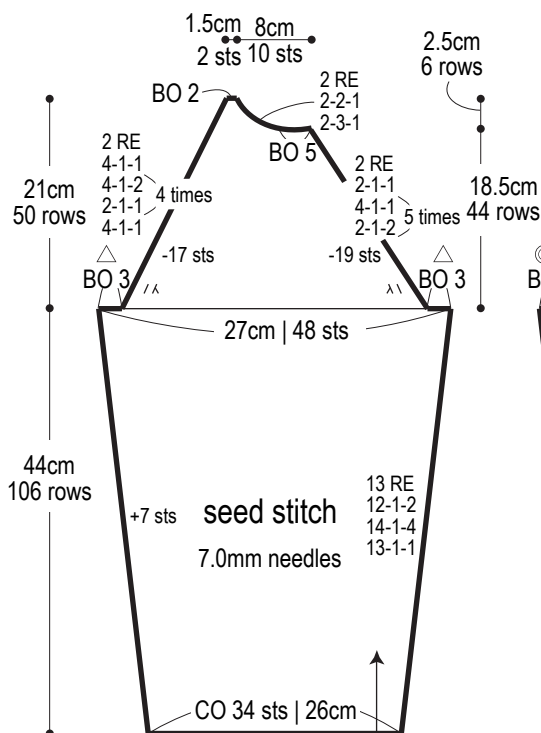
Right front



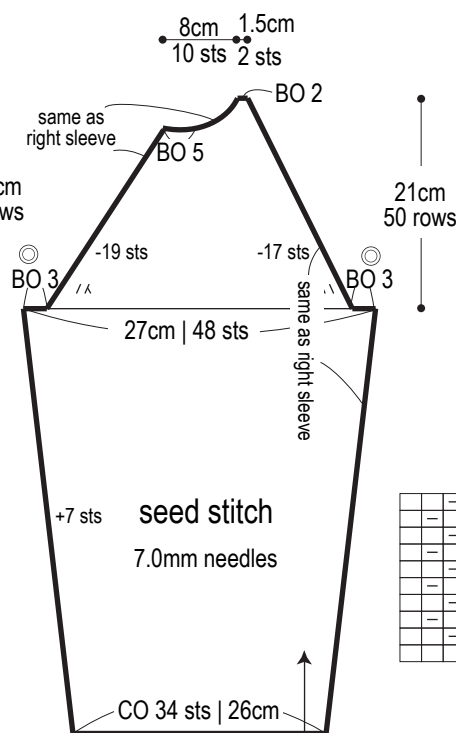
Left front



Right sleeve

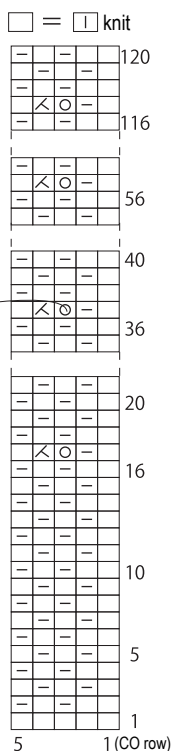


Left sleeve

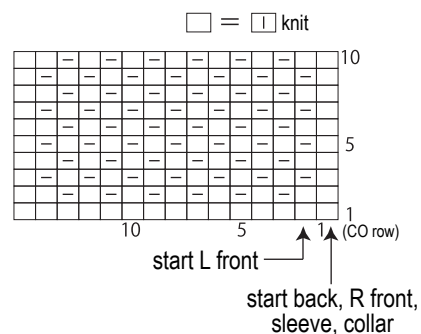


Buttonholes

7.0mm needles

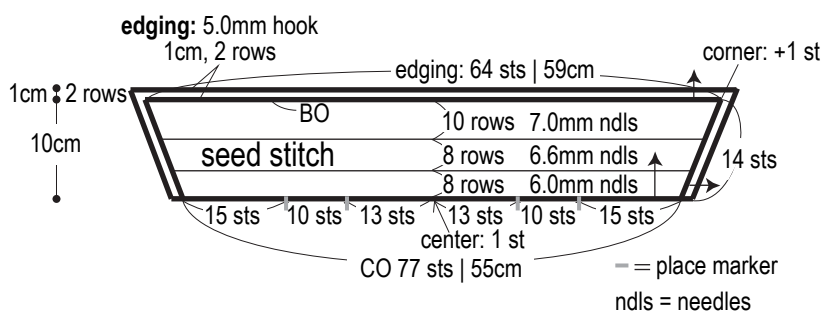


Seed stitch

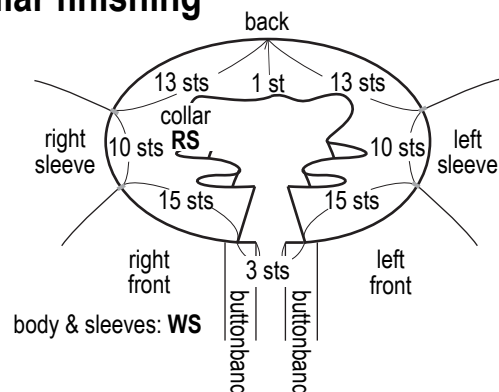


※K1 at each edge for selvedge.

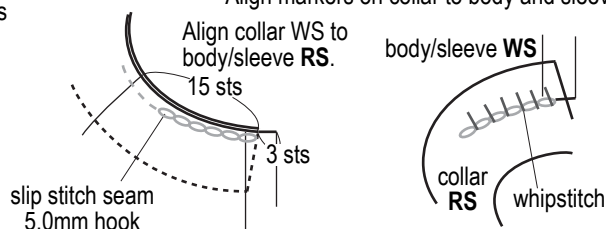
Collar



Collar finishing



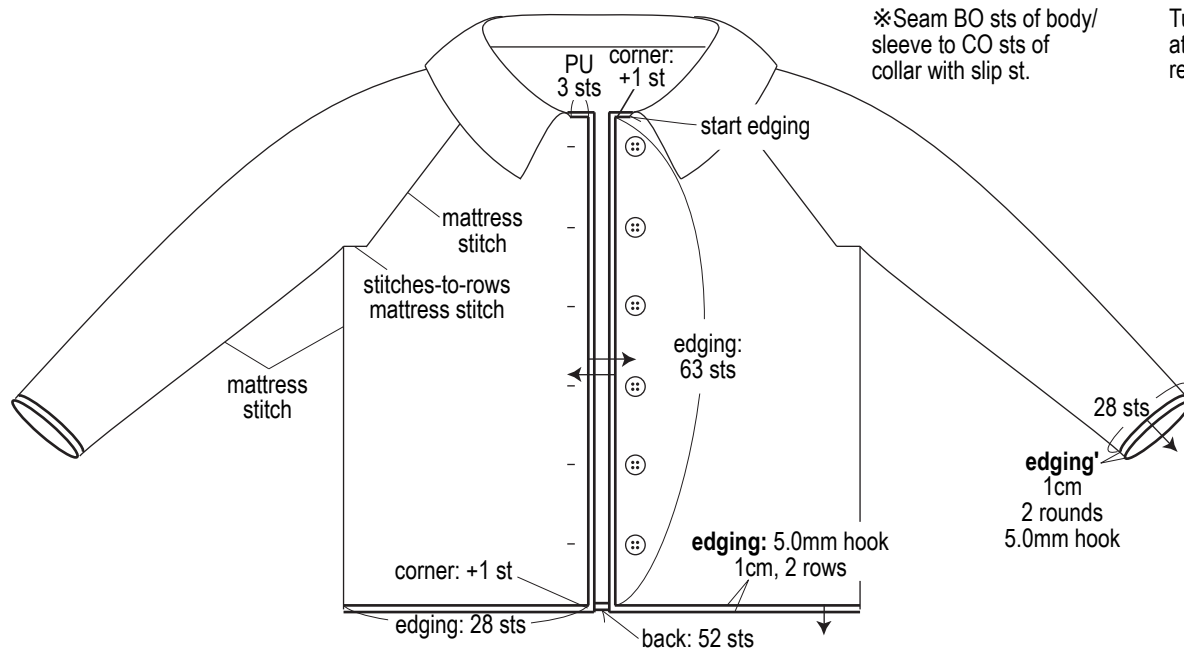
Align markers on collar to body and sleeves.



*Seam BO sts of body/sleeve to CO sts of collar with slip st.

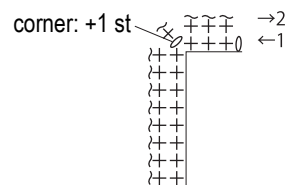
Turn down slip stitch area at body and sleeve; reinforce with whipstitch.

Finishing

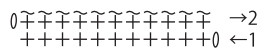


Edging corner

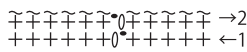
5.0mm hook



Edging 5.0mm hook

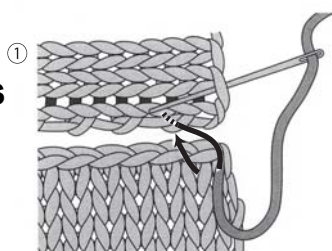


Edging' 5.0mm hook

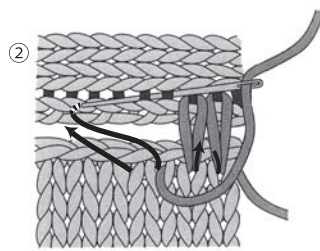


Stitches-to-rows mattress stitch

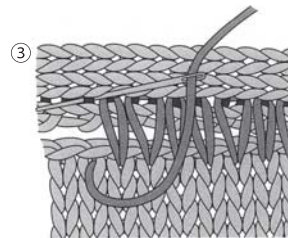
(When seaming BO edge to side edge.)



Insert needle from back to front through loop between first 2 sts, then insert into st below as indicated by arrow.



Alternate between inserting needle under bar between sts in vertical piece and sts in horizontal piece. In cases where there are surplus stitches, pick up 2 bars at a time.



Alternate inserting needle under bars and stitches, tightening up sts as you go such that edges aren't visible beneath seam.