

z181-11 Colorful Bag



Suggested yarn:

- Keito-Zakka Stores Lapin [100% cotton; 131 yds/120m per 1.41 oz./40g cone];
 - color #04 papillon, 1 cone [27g]
 - color #13 horizon, 1 cone [27g]
 - color #16 mer, 1 cone [27g]
 - color #17 foret, 1 cone [27g]
 - color #18 herbes, 1 cone [27g]
 - color #19 lune, 1 cone [27g]
 - color #20 soleil, 2 cones [70g]

Tools/Notions:

- 2.0mm (US steel hook #4) crochet hook or size necessary to achieve gauge
- 1 pair purse handles (approx. 48cm/18.90" long)
- 1 snap (1.2cm/0.47" diameter)
- fabric for lining (74cm/29.13" x 48cm/18.90")
- if desired, stiff cardboard to insert into bottom piece

Finished measurements:

- opening circumference 92cm/36.22"
- depth 28.5cm/11.22"

Gauge (10cm/4" square):

- pattern stitch: 29 sts and 12.5 rows

Gauge may vary according to individual crochet style. Change hook size if necessary to achieve gauge. Alternatively, rework pattern with your own gauge measurements.

Summary

✳️**Note:** Like all Japanese patterns, stitch counts given here for foundation chains do not include any chain sts needed for turning posts.

Body of bag: Work foundation chain to begin, then work bottom piece in sc. Continue to side of bag, working in pattern stitch and changing color every 5 rows. Work edging after last row of pattern stitch; bind off. Work second half of bottom and side of bag starting by working sc into other side of foundation chain. Seam sides of bag together with mattress stitch. Finish bottom of bag according to finishing schematics.

Lining: Turn inside-out, then seam sides. Fold section at top (where mouth of bag will be) three times (see finishing schematics). Sew gussets into bottom of bag. Insert lining into bag; seam in place with whipstitch.

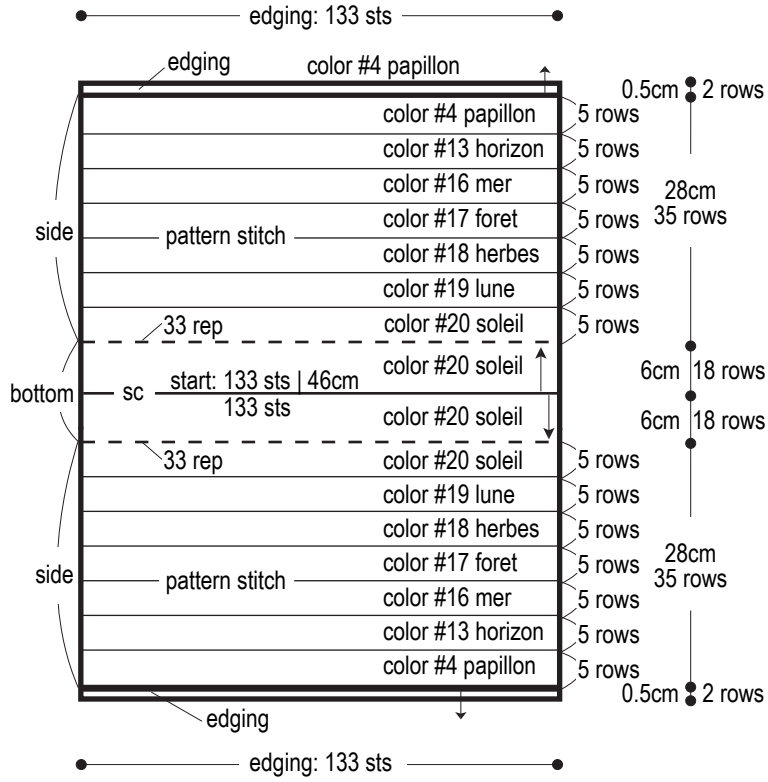
Finishing: Seam handles to bag with half backstitch. Seam section 1 to body and lining using backstitch. Fasten snap to inside. If desired, insert stiff cardboard into bottom of bag.

Abbreviations:

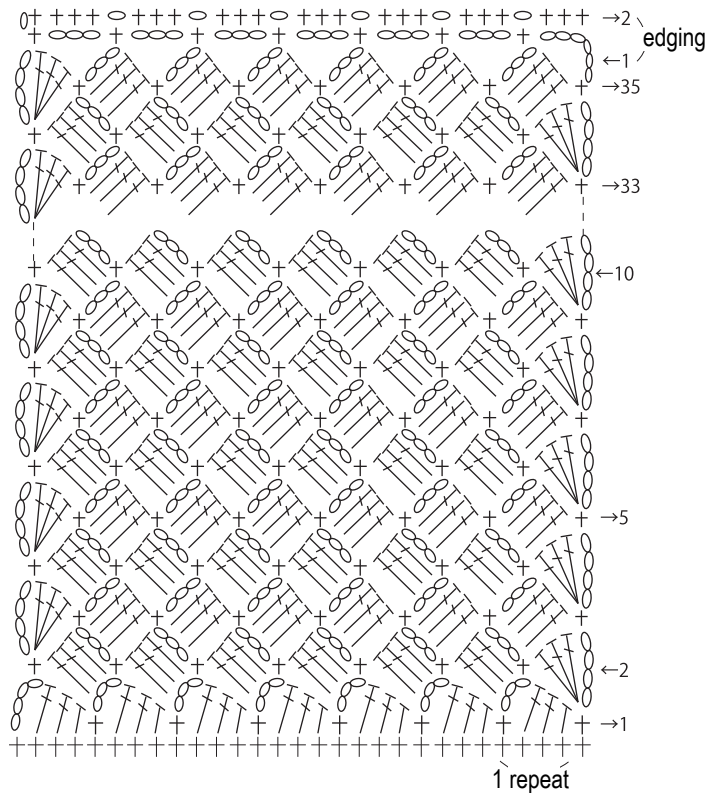
ch = chain
rep = pattern repeat(s)
RS = right side
WS = wrong side
sc = single crochet (US)

Body of bag

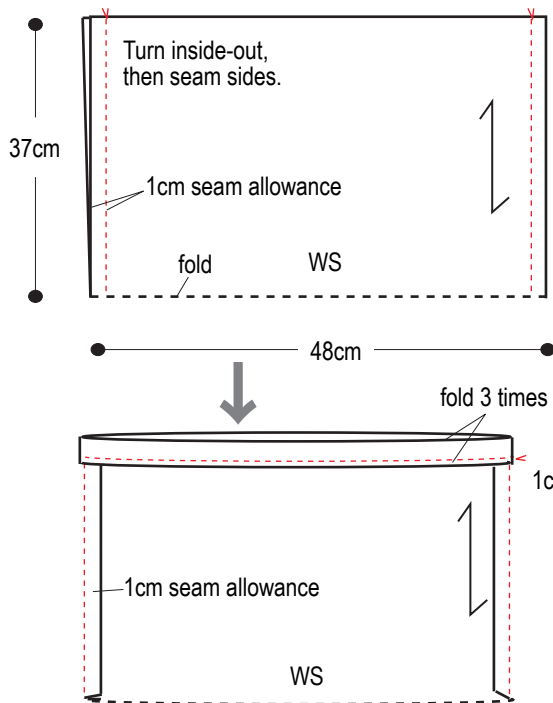
2.0mm hook



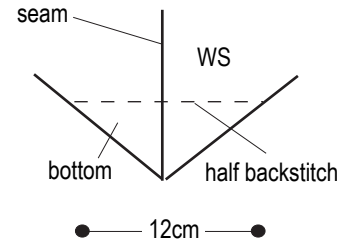
Pattern stitch & edging 2.0mm hook



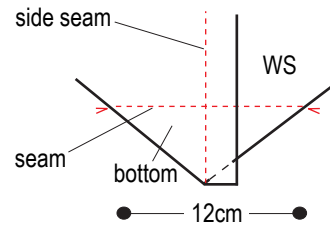
Lining instructions



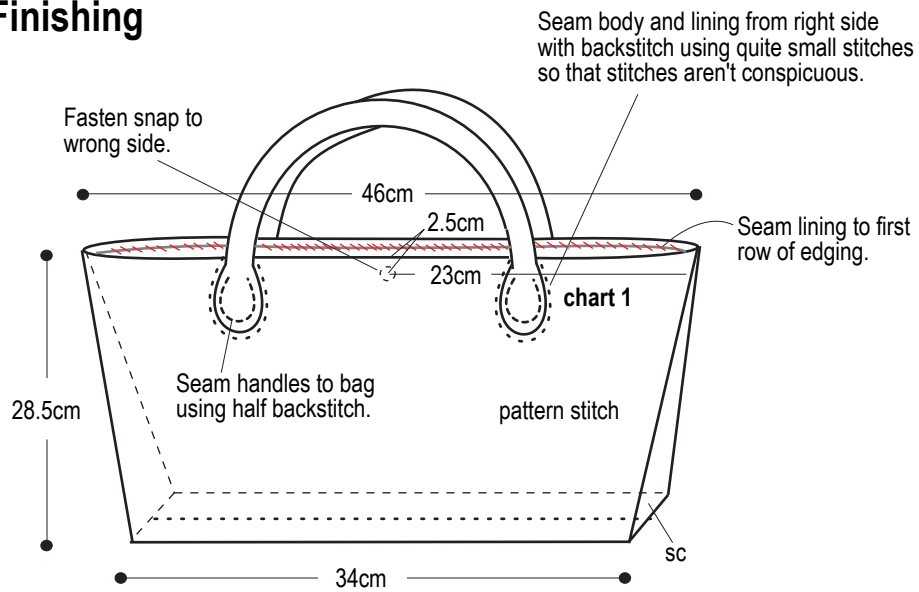
Bottom gusset: body



Bottom gusset: lining



Finishing



Bottom insert

