

# tricot8-8 Pouch



## Suggested yarn:

- Keito-Zakka Stores Rose Color [70% cotton, 30% merino wool; 92 yds/84m per 1.23 oz./35g skein];
  - color #03 canary yellow, 1 skein [20g]
  - color #08 mint green, 2 skeins [50g]

## Tools/Notions:

- 3.9mm (approx. US 6) knitting needles or size necessary to achieve gauge
- 3.0mm (approx. US C or D) crochet hook or size necessary to achieve gauge
- cable needle
- fabric for lining (43cm/16.93" by 35cm/13.78") - sufficient to make both versions
- interfacing (39cm/15.35" by 33cm/12.99") - sufficient to make both versions
- 2 buttons 25mm/0.98" (1 per pouch)

## Finished measurements:

- |                     |                    |
|---------------------|--------------------|
| • version A:        | • version B:       |
| • width 26cm/10.24" | • width 13cm/5.12" |
| • depth 13cm/5.12"  | • depth 9cm/3.54"  |

## Gauge (10cm/4" square):

- pattern stitch A: 27.5 sts and 28.5 rows
- pattern stitch B: 30 sts and 28.5 rows

*Gauge may vary according to individual knitting style. Change needle size if necessary to achieve gauge. Alternatively, rework pattern with your own gauge measurements.*

## Summary

**Body of pouch:** Cast on with long-tail cast-on method. Work version A in pattern stitch A; work version B in pattern stitch B. Bind off.

**Finishing:** Fuse interfacing to wrong side of pouch using an iron. Fold to outside at dotted line (see finishing schematic), then seam both edges together using whipstitch. Turn lining inside-out, fold as indicated, and seam edges. Fold seams of flap and mouth of pouch to the wrong side. Insert lining into body of pouch. Seam lining to pouch using whipstitch, taking care that lining does not slip out of place. Crochet a button loop and attach to flap of pouch.

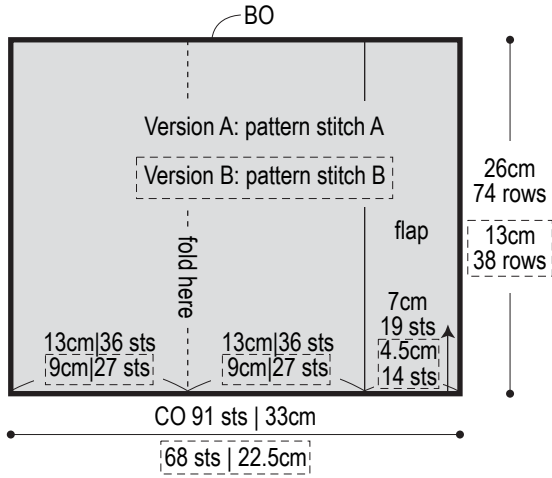
## Abbreviations:

BO = bind off  
ch = chain stitch  
CO = cast on  
RS = right side  
WS = wrong side

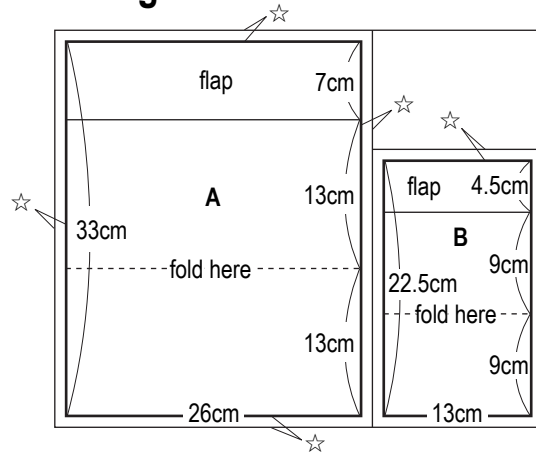
☐ = version B

※If there is only one set of instructions, it refers to both versions A and B.

## Body of pouch 3.9mm needles

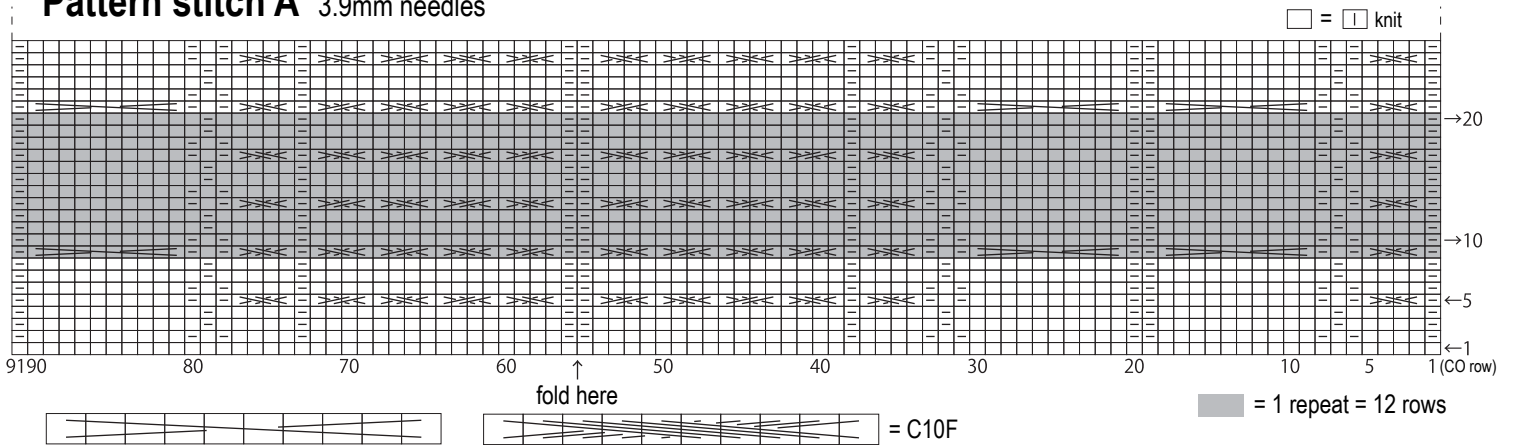


## Lining



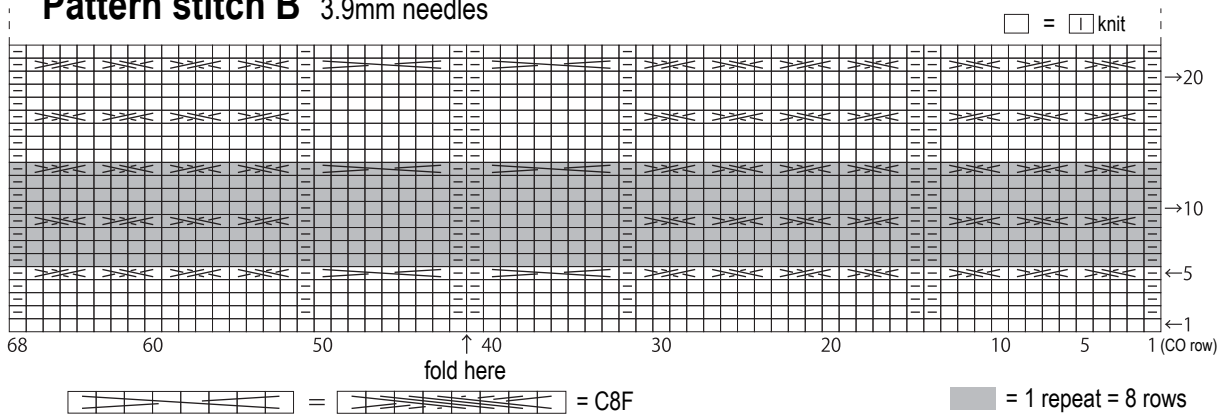
☆ = 1cm seam allowance

## Pattern stitch A 3.9mm needles



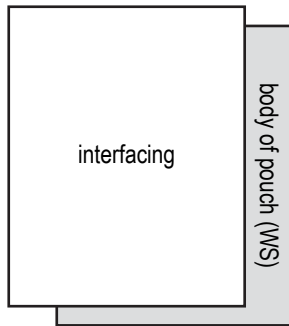
C10F = slip 5 sts to cable needle and hold in front. k5, k5 from cable needle.

## Pattern stitch B 3.9mm needles



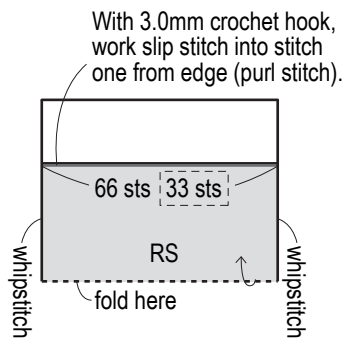
C10F = slip 4 sts to cable needle and hold in front. k4, k4 from cable needle.

## Finishing

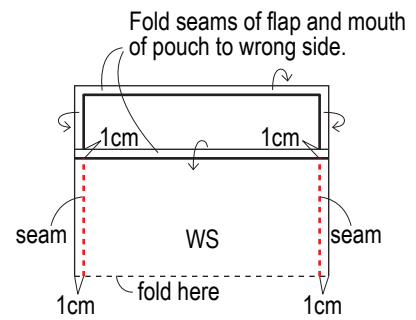


Attach interfacing to wrong side of pouch using an iron.

## Body of pouch



## Lining



## Finished pouch

