

tricot8-4 Skirt



Suggested yarn:

- Keito-Zakka Stores Rose Color [70% cotton, 30% merino wool; 92 yds/84m per 1.23 oz./35g skein];
 - color #13 mist gray, 10 skeins [330g]
 - color #15 pink, 1 skein [5g]

Tools/Notions:

- 3.3mm (approx. US 4) and 3.6mm (approx. US 5) knitting needles or sizes necessary to achieve gauge
- 3.0mm (approx. US C or D) and 3.5mm (US E) crochet hooks or sizes necessary to achieve gauge
- elastic for waistband (3cm/1.18" wide, 68cm/26.77" long)

Finished measurements:

- skirt length 52cm/20.47"
- waist 66cm/25.98"

Gauge (10cm/4" square):

- stockinette stitch (with 3.6mm needles): 24 sts and 35 rows
- pattern stitch (with 3.0mm hook): 23 sts and 12 rows

Gauge may vary according to individual crochet style. Change hook size if necessary to achieve gauge. Alternatively, rework pattern with your own gauge measurements.

Summary

❖**Note:** Like all Japanese patterns, stitch counts given here for foundation chains do not include any chain sts needed for turning posts.

Skirt (make 2): With knitting needles, cast on with long-tail cast-on method. Work in stockinette stitch. After working 42 rows, begin decreasing at edges. Change needle size where indicated to adjust gauge. Bind off. Pick up stitches from bind-off edge; work waistband and then bind off.

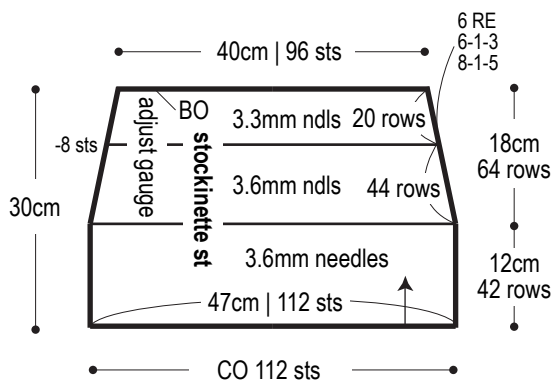
Peplum: With crochet hook and working first row into cast-on edge of knitting, work pattern stitch. Change hook size when indicated to adjust gauge.

Finishing: Seam sides with mattress stitch. Insert elastic into waistband while folding it to inside. Tack waistband down with whipstitch. With crochet hook and color #15, work 1 round of edging around hem.

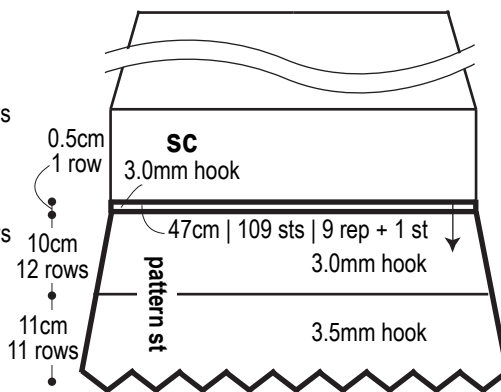
Abbreviations:

BO = bind off
ch = chain
CO = cast on
RE = row(s) even
rep = pattern repeat(s)
sc = single crochet (US)
#-#-# = rows-stitches-times

Skirt (make 2)

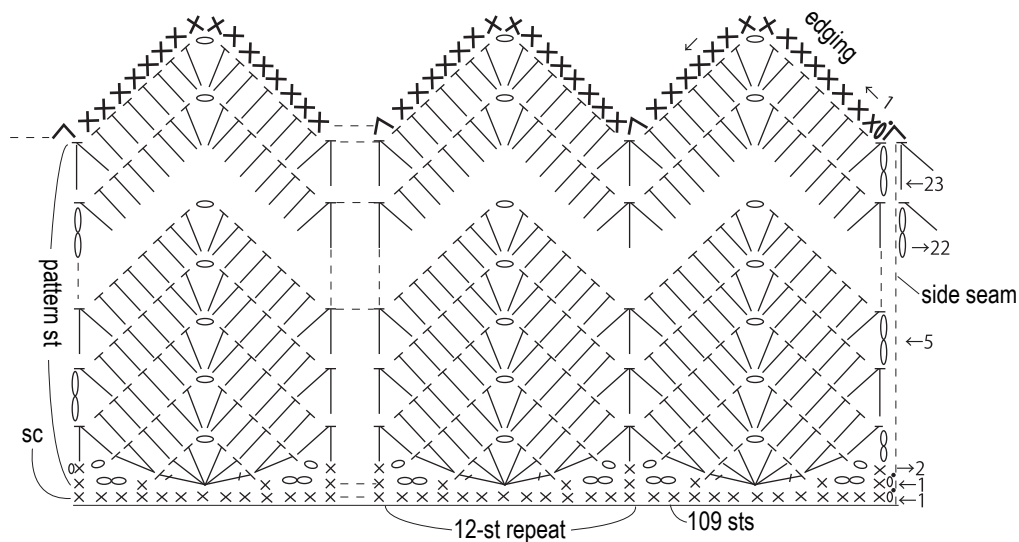


Peplum (make 2)



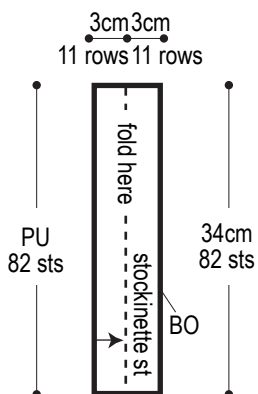
Sc, pattern stitch, and edging

Refer to schematics for hook size.

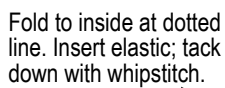


Waistband (make 2)

3.6mm needles



Finishing



Sew ends together
with 2cm overlap.

