

fz409-1-pull Flare Sleeve Pullover



Suggested yarn:

- Keito-Zakka Stores Grayish Ramie [77% rayon, 23% ramie; 164 yds/150m per 1.41 oz./40g skein]; color #41 light cocoa brown, 6 skeins [240g]

Tools/Notions:

- 3.6mm (approx. US 5) knitting needles or size necessary to achieve gauge
- 2.5mm (approx. US B or C) crochet hook or size necessary to achieve gauge

Finished measurements:

- bust 89cm/35.04"
- cross back width 30.5cm/12.01"
- back length 54.5cm/21.46"
- sleeve length 16cm/6.30"

Gauge (10cm/4" square):

- pattern stitch A: 24 sts and 46 rows
- pattern stitch B: 24 sts and 32 rows
- pattern stitch C: 29 sts and 18 rows

Gauge may vary according to individual knitting style. Change needle size if necessary to achieve gauge. Alternatively, rework pattern with your own gauge measurements.

Summary

Body: Cast on with long-tail cast-on method. Working from hem upward, work in pattern stitches A and B, then bind off. With crochet hook, work into bind-off row to begin top section in pattern stitch C.

Sleeve (make 2): Cast on as for body. Work in pattern stitch A and stockinette stitch.

Finishing: Seam sides with mattress stitch (for knitted sections) and chain seam (for crochet sections). Seam shoulders with chain seam. Seam sleeves to body with crochet slip stitch seam, forming gathers at sleeve cap where indicated while seaming. Crochet 2 cords, then seam to front opening where indicated.

Abbreviations:

BO = bind off

chain seam = alternating chain st and slip st as needed to maintain pattern

CO = cast on

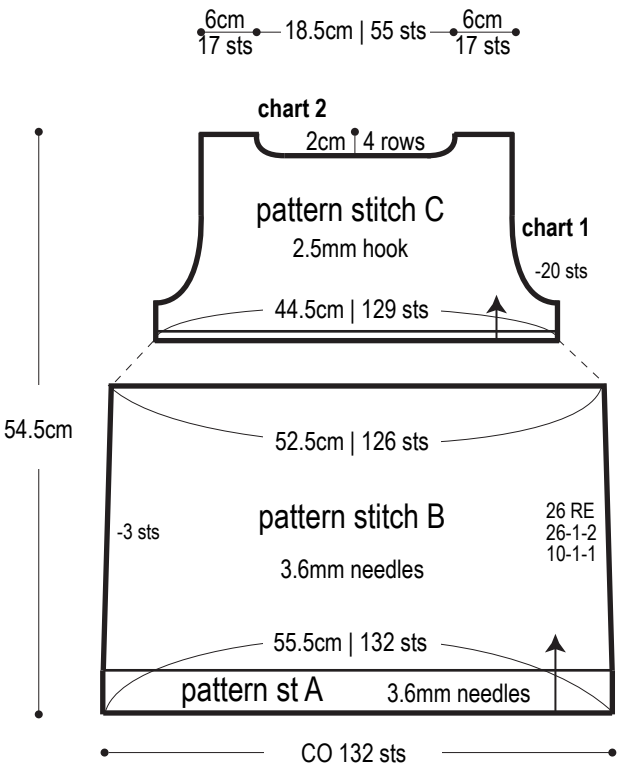
RE = row(s) even

rep = pattern repeat(s)

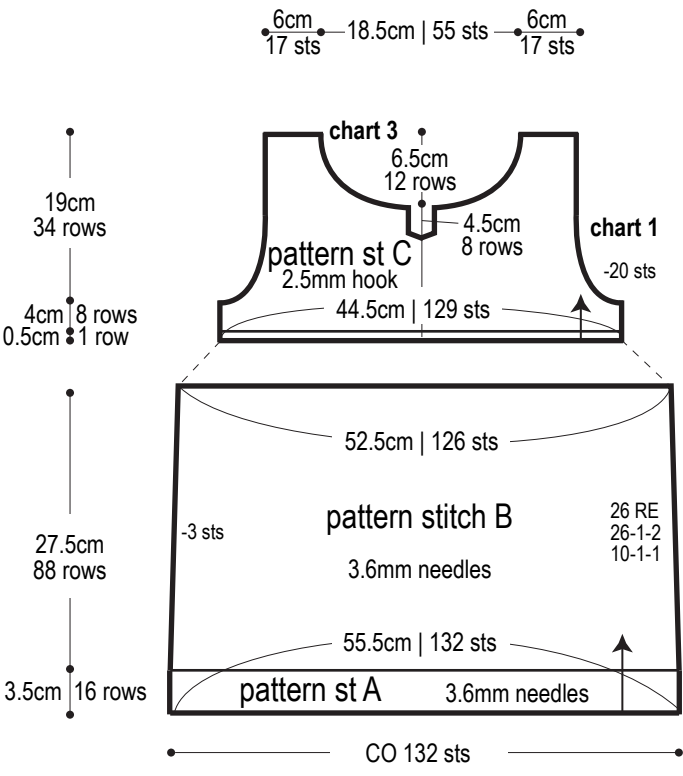
st st = stockinette stitch

#-#-# = rows-stitches-times

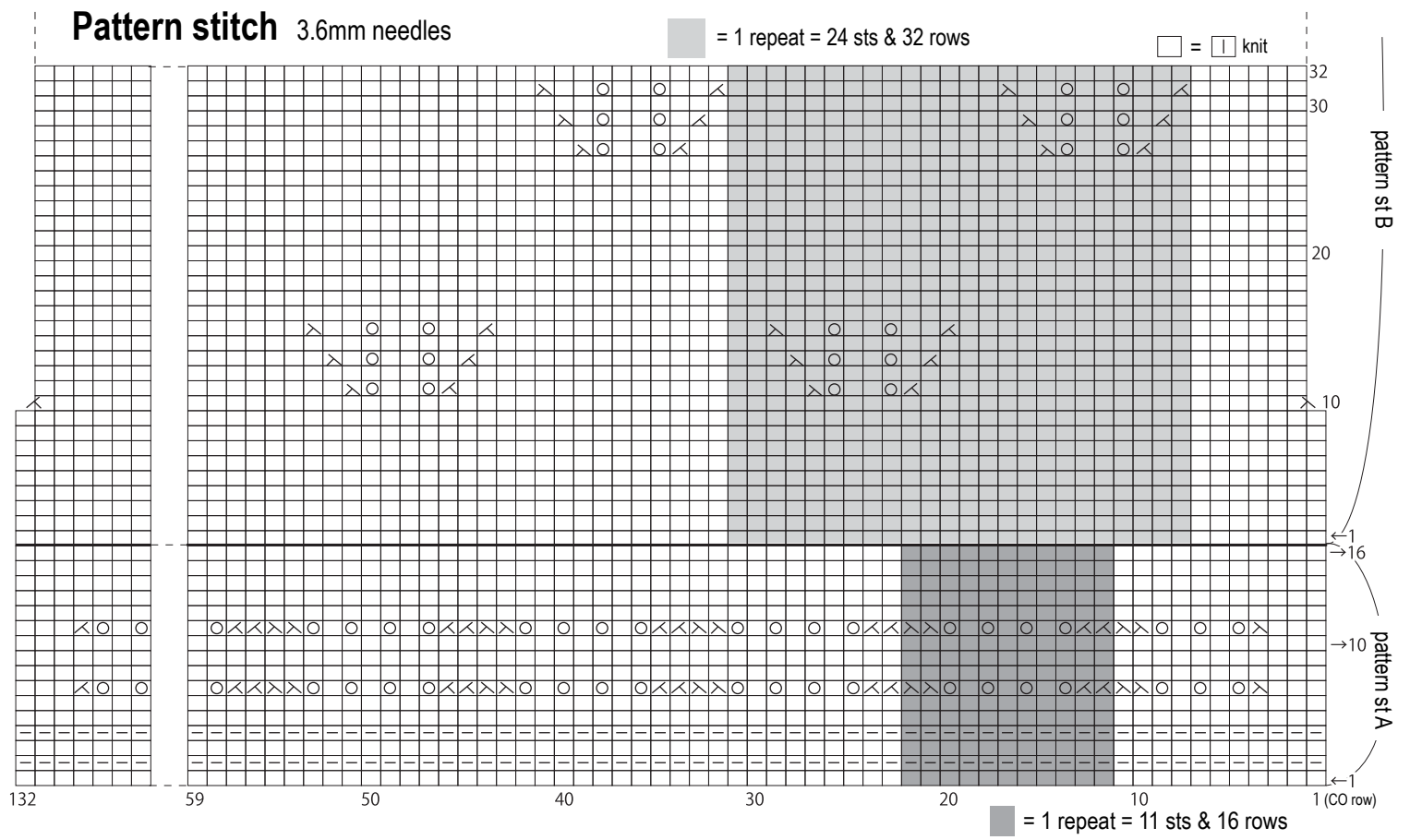
Back



Front



Pattern stitch 3.6mm needles



The diagram shows the bottom of the hat with a central opening. The top edge is labeled "38 rep" with a curved arrow. The sides are labeled "20 rep" with curved arrows. The bottom edge, which forms the opening, is labeled "8 rep" with two curved arrows. The text "attach cords here" is written in the center of the hat's body.

Diagram illustrating a 1D lattice with 10 sites. The first 8 sites are occupied by particles (X) and are grouped by a bracket labeled "1 rep". The 9th site is empty (O) and marked with a dot. The 10th site is occupied by a particle (X) and has an arrow pointing to it from the right, labeled "1".

18cm | 52 sts | 12 rep

Sleeve

Diagram illustrating the construction of a sleeve, showing the relationship between the armhole curve and the cuff.

Armhole Curve (Top):

- BO 82 sts
- st st 3.6mm needles
- 26 sts
- 56cm | 134 sts
- 2 RE
- 2-8-1
- 2-4-1
- 2-2-1
- 2-1-9
- 4-1-3

Armhole Depth (Left):

- 16cm

Cuff (Bottom):

- pattern stitch A
- 3.6mm needles
- CO 134 sts

Cuff Dimensions (Right):

- 11cm
- 38 rows
- 5cm
- 12 rows

chart 3